

Hitachi Power Tools

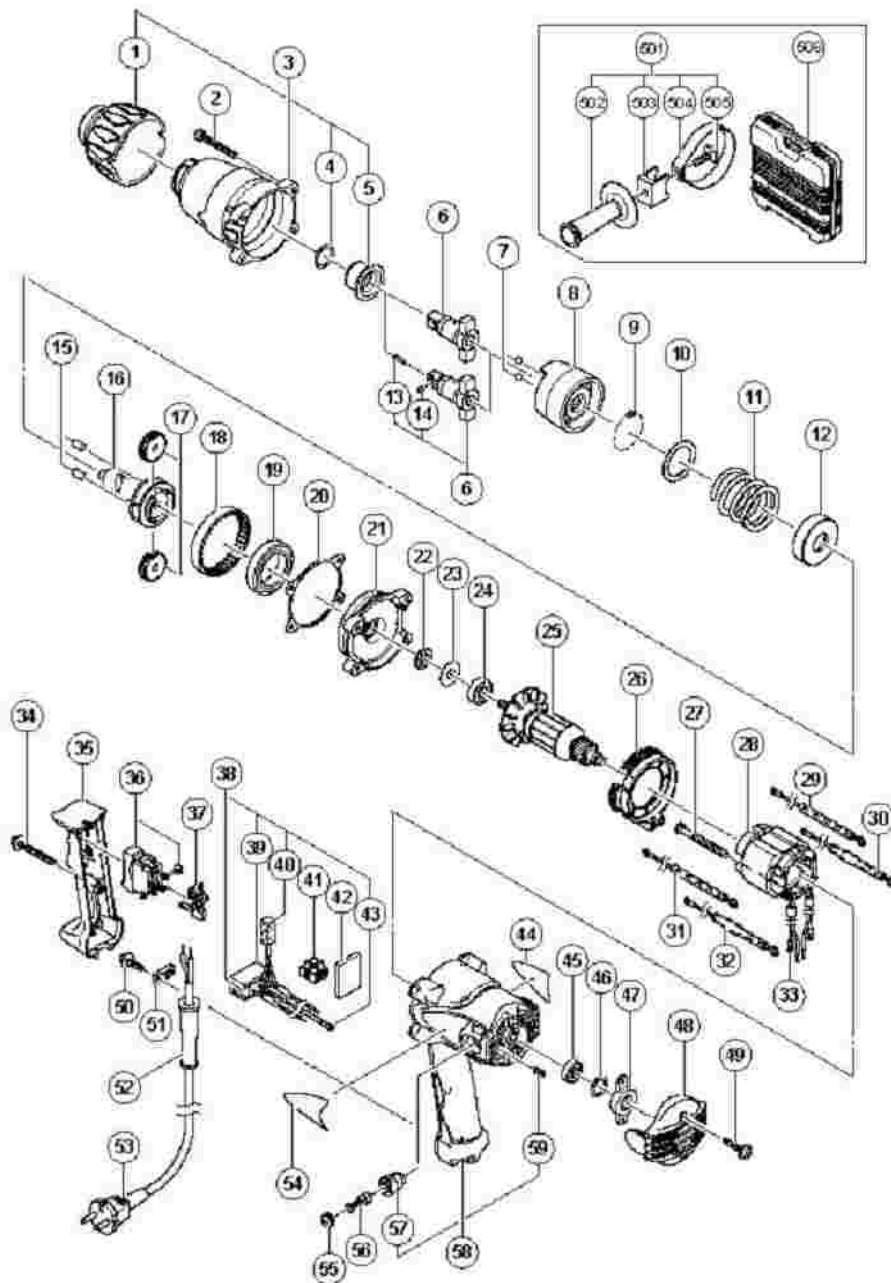
LIST NO. E785

ELECTRIC TOOL PARTS LIST

■ IMPACT WRENCH
Model WR 16SA

2005 • 6 • 1

(E1-1)



WR16SA

Pos. Nr.	Art. Nr.	Beschreibung	Stueck	Kommentar
1	323-767	Puffer WR16SA	1	
2	323-753	Schraube M5x35	4	
3	323-765	Hammergehause WR16SA	1	"INCLUD.1,4,5"
4	318-704	O-RING (M) WH14	1	
5	323-766	Metall WR16SA	1	
6	323-773	Amboss (G) WR16SA	1	"TYPE FOR W/O PLUNGER (A),PIN RETAINER(A
6	985-207	AMBOSS (B) KOMPL M KUGEL WH14/16	1	"INCLUD.13,14 TYPE FOR W/PLUNC (A),"
006	000-008D		0	PIN RETAINER (A)
7	959-150	STAHLKUGEL D6 35 (10ST)	2	
8	323-764	Hammer WR16SA	1	
9	959-155	STAHLKUGELN D3 97 (10ST)	30	
10	323-763	Hammerscheibe WR16SA	1	
11	323-761	Feder WR16SA	1	
12	323-760	Federsitz WR16SA	1	
13	323-542	Stiftsicherung	1	"FOR FRA,FRG,ITA,ESP,FIN,SUI,USA
14	323-541	Tauchkolben	1	"FOR FRA,FRG,ITA,ESP,FIN,SUI,USA
15	985-169	NADELROLLE WH14/16	2	
16	323-762	Spindel WH16SA	1	
17	318-446	LEERLAUFZAHNRAD (SATZ 2ST) WH16	2	
18	955-124	RINGZAHNRAD WH16	1	
19	690-7ZZN		1	

20	324-022	Dichtung (A) WR16SA	1	
21	323-758	Innengehäuse WR16SA	1	
22	323-755	Filzdichtung WR16SA	1	
23	985-166	DICHTUNGSSCHEIBE WH16	1	
24	600-0DD	KUGELLAGER 6000 DD	1	
25	360-687C		1	
25	360-687U		1	"INCLUD.24,45"
25	360-687E	Anker 220-230V WR16SA	1	
25	360-687F		1	
26	323-757	Ventilatorführung WR16SA	1	
27	981-824	SECHSKANTSCHNEIDSCHRAUBE D4X45	2	
28	340-605C		1	
28	340-605D		1	
28	340-605E	Stator 220-230V WR16SA	1	
28	340-605F		1	
29	985-186	VERBINDERKABEL WH16	1	"FOR KUW,INA,HKG,SIN,THA"
29	985-192	VERBINDERKABEL WH14/16	1	"FOR USA,CAN"
30	323-769	Drosselspule WR16SA	1	"FOR SAF,NZL,AUS,AUT,GBR,FRA,FRG,IT"
030	000-008D		0	"BEL,ESP,FIN,SUI,CHN"
31	985-187	VERBINDERKABEL WH16	1	"FOR KUW,INA,HKG,SIN,THA"
31	985-193	VERBINDERKABEL WH14/16	1	"FOR USA,CAN"
32	323-770	Drosselspule WR16SA	1	"FOR SAF,NZL,AUS,AUT,GBR,FRA,FRG,IT"

032	000-008D		0	"BEL,ESP,FIN,SUI,CHN"
33	980-063	KABELSCHUH C7U/CJ65V2/H70SA/G13V G13YD/G	2	
34	303-694	SCHNEIDSCHRAUBE D4X35 M FLANSCH	1	
35	323-772	Handgriffabdeckung WR16SA	1	
36	985-103	SCHALTER WH14/16/22 Neue Art - Nr 320528	1	
36	320-528	Schalter kpl WH14/WH16	1	"FOR AUT,GBR,FRA,FRG,ITA,HOL,BEL,ES
036	000-008D		0	SUI
37	323-768	Schalteradapter WR22SA	1	
38	323-780	Kondensator WR16SA	1	"INCLUD.39,40,43 FOR SAF,NZL,AUS,AUT,GBR
038	000-008D		0	"FRA,FRG,ITA,HOL,BEL,ESP,FIN,SU
39	930-153	POLSTER (B) SELBSTKLEB DIV TYPEN	1	FOR NOISE SUPPRESSOR ASS'Y (W/RESISTOR)
40	316-186	POLSTER (B) VB13Y/WH12DM/VB16Y	1	FOR NOISE SUPPRESSOR ASS'Y (W/RESISTOR)
41	958-308Z	SCHRAUBKLEMME 2-REIHIG DIV TYPEN	1	
41	983-418Z	SCHRAUBKLEMME (B) 2-REIHIG WH14/WH16	1	"FOR USA,CAN,SUI,KUW,INA,HKG,SIN,TI
42	324-023	Puffer (B) WR22SA	1	
43	980-063	KABELSCHUH C7U/CJ65V2/H70SA/G13V G13YD/G	1	FOR NOISE SUPPRESSOR ASS'Y (W/RESISTOR)
44			1	
45	608-VVM	KUGELLAGER 608 VVM	1	
46	985-198	GUMMISCHEIBE WH14/16	1	
47	323-754	Lagerbuchse (B) WR16SA	1	

48	323-756	Endabdeckung WR16SA	1	
49	301-653	SCHNEIDSCHRAUBE D4X20 MIT FLANSCH (SCHWA	2	
50	984-750	SCHNEIDSCHRAUBE D4X16 MIT FLANSCH	2	
51	937-631	KABELKLEMME DIV TYPEN	1	
52	953-327	KABELKNICKSCHUTZ D8 8 DIV TYPEN	1	
52	938-051	KABELKNICKSCHUTZ D10 1 DIV TYPEN	1	
53	500-247Z		1	(CORD ARMOR D8.8)
53	500-450Z		1	(CORD ARMOR D8.8) FOR GBR (230
53	500-461Z		1	(CORD ARMOR D8.8) FOR GBR (110
53	500-248Z		1	(CORD ARMOR D8.8) FOR SUI
53	500-439Z	Anschlusskabel Neue Art -Nr 714500	1	"(CORD ARMOR D8.8) FOR AUS,NZI
53	500-240Z		1	"(CORD ARMOR D8.8) FOR USA,CAI
53	500-423Z		1	"(CORD ARMOR D8.8) FOR KUW,SII
53	500-456Z		1	(CORD ARMOR D8.8) FOR CHN
53	500-435Z		1	(CORD ARMOR D8.8) FOR HKG
53	500-201Z	Anschlusskabel	1	(CORD ARMOR D10.1) FOR THA
53	500-234Z		1	(CORD ARMOR D8.8) FOR INA
54			1	
55	931-266	KOHLLENKAPPE G12SA/G13SB u a CL10SA	2	
56	999-021	KOHLLENBURSTEN (PAAR)	2	
57	957-	KOHLLENHALTER G12SA/G13SB u	2	

	571	a CL10SA		
58	323-771	Gehäuse kpl WR16SA	1	"INCLUD.57,59"
59	938-477	INBUSSTIFTSCHRAUBE M5X8	2	
501	323-774	Seitenhandgriff kpl WR16SA	1	"INCLUD.502-505 FOR SAF,NZL,AUS,AUT,GBR,
501	000-008D		0	"FRA,FRG,ITA,HOL,BEL,ESP,FIN,SU
502	980-901	SEITENGRIFFF VRV16/DH20V/DH25V/PB	1	FOR SIDE HANDLE ASS'Y
503	323-775	Handgriffhalter WR22SA	1	FOR SIDE HANDLE ASS'Y
504	323-776		1	FOR SIDE HANDLE ASS'Y
505	980-903	SPEZIALSCHRAUBE M8 DH20V/DH25PB	1	FOR SIDE HANDLE ASS'Y
506	323-777	Transportkoffer WR16SA	1	FOR ESP
601	986-062	GELENKADAPTER 1/2 WH14/WH16	1	"INCLUD.602,603"
602	873-537		1	
603	873-187	SICHERUNGSRING F STECKNUSS MIT * AB 15MM	1	
604	873-536		1	"INCLUD.602,603"
605	873-624		1	"INCLUD.602,603"
606	873-626	KRAFTSTECKNUSS 21MM WH14/WH16 WR12DM	1	"INCLUD.602,603"
607	873-627	KRAFTSTECKNUSS 22MM WH14/WH16 WR12DM	1	"INCLUD.602,603"
608	873-628	KRAFTSTECKNUSS 23MM WH14/WH16	1	"INCLUD.602,603"
609	873-629	KRAFTSTECKNUSS 24MM WH14/WH16	1	"INCLUD.602,603"
610	873-630	KRAFTSTECKNUSS 26MM WH14/WH16	1	"INCLUD.602,603"

611	985-195	KRAFTSTECKNUSS 27MMX40L (1/2)	1	"INCLUD.602,603"
612	985-196	KRAFTSTECKNUSS 30MMX50L (1/2)	1	"INCLUD.602,603"
613	873-633	KRAFTSTECKNUSS-VERLANGER WH14/16 WR12DM	1	"INCLUD.602,603"
614	955-138	KRAFTSTECKNUSS 12MM WH16/WR12DM	1	"INCLUD.602,603"
615	955-139	KRAFTSTECKNUSS 13MM WH16/WR12DM	1	"INCLUD.602,603"
616	955-140	KRAFTSTECKNUSS 14MM WH16/WR12DM	1	"INCLUD.602,603"
617	955-141	KRAFTSTECKNUSS 17MM WH16/WR12DM	1	"INCLUD.602,603"
618	955-142	KRAFTSTECKNUSS 19MM WH16/WR12DM Neue Art	1	"INCLUD.602,603"
619	955-143	KRAFTSTECKNUSS 21MM WH16/WR12DM	1	"INCLUD.602,603"
620	955-144	KRAFTSTECKNUSS 22MM WH16/WR12DM	1	"INCLUD.602,603"
621	955-146		1	"INCLUD.602,603"
622	955-149	KRAFTSTECKNUSS 17MM WH16 (L-75MM) WR12DM	1	"INCLUD.602,603"
623	955-150		1	"INCLUD.602,603"
624	955-151	KRAFTSTECKNUSS 21MM WH16 (L-75MM) WR12DM	1	"INCLUD.602,603"
625	955-147	KRAFTSTECKNUSS 26MM WH16	1	"INCLUD.602,603"
626	985-197	KRAFTSTECKNUSS 30MMX75L (1/2)	1	"INCLUD.602,603"

627	971-042	FETT (100G) WH14/WH16/WH22	1	
628	323-774	Seitenhandgriff kpl WR16SA	1	INCLUD.629-632
629	980-901	SEITENGRIFFF VRV16/DH20V/DH25V/PB	1	
630	980-903	SPEZIALSCHRAUBE M8 DH20V/DH25PB	1	
631	323-775	Handgriffhalter WR22SA	1	
632	323-776		1	
633	955-153		1	
651			1	
651	000-008D		0	INCLUD.652-668
652	955-300		1	
653	955-301		3	
654	955-302		1	
655	945-251	AUFKLEBER HITACHI WH14/WH16	1	
656	955-303		2	
657	955-304		2	
658	955-305		1	
659	955-306		1	
660	948-227	SICHERUNGSRING D47 INNEN/DH30PC DH50SA1/	1	
661	955-307		1	
662	955-308		1	

663	955-309		1	
664	955-310		1	
665	955-311		1	
666	303-247		6	
667	873-537		1	
668	873-187	SICHERUNGSRING F STECKNUSS MIT * AB 15MM	1	