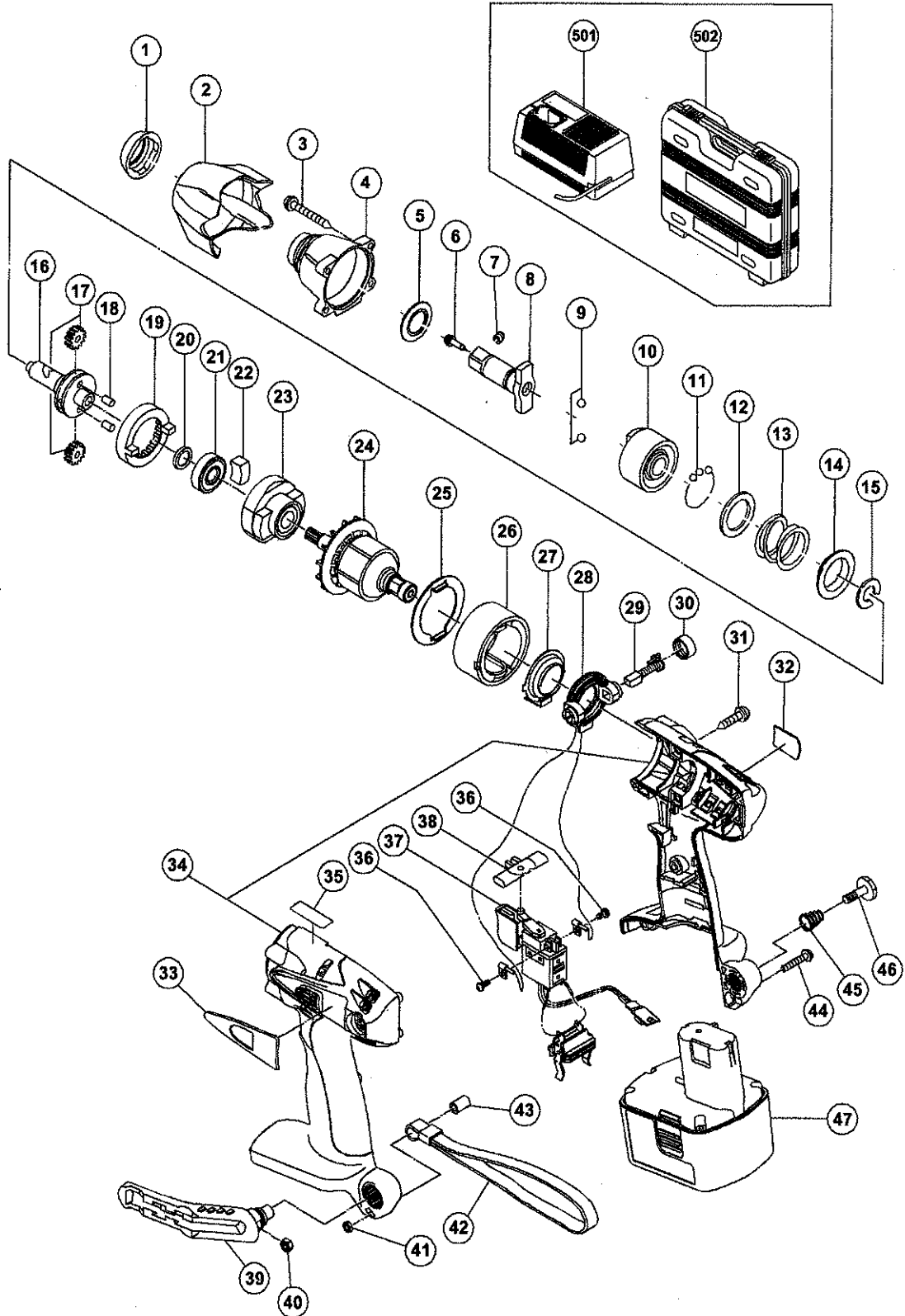


ELECTRIC TOOL PARTS LIST

■ CORDLESS IMPACT WRENCH
Model WR 14DM

2002·9·30
(E1)



PARTS

WR 14DM

ITEM NO.	CODE NO.	DESCRIPTION	NO. USED	REMARKS
1	320-383	FRONT CAP	1	
2	320-889	PROTECTOR	1	
3	319-917	TAPPING SCREW (W/SP. WASHER) D4X25 (BLACK)	4	
4	320-888	HAMMER CASE	1	
5	320-894	SPACER	1	
6	985-209	PIN RETAINER	1	
7	985-208	PLUNGER	1	
8	320-896	ANVIL (P) ASS'Y	1	INCLUD. 6, 7
9	959-154	STEEL BALL D5.556 (10 PCS.)	2	
10	320-880	HAMMER (C)	1	
11	959-148	STEEL BALL D3.175 (10 PCS.)	28	
12	315-978	WASHER (J)	1	
13	320-879	HAMMER SPRING (C)	1	
14	316-172	WASHER (S)	1	
15	316-171	STOPPER	1	
16	320-878	SPINDLE (C)	1	
17	319-913	IDLE GEAR SET (2 PCS.)	2	
18	319-914	NEEDLE ROLLER	2	
19	320-877	RING GEAR (C)	1	
20	319-911	WASHER (E)	1	
21	690-1VV	BALL BEARING 6901VVCMP2L	1	
22	319-909	DAMPER	2	
23	319-908	INNER COVER	1	
24	360-575	ARMATURE DC 14.4V	1	
25	321-441	WASHER (M)	1	
26	320-916	MAGNET (C) ASS'Y	1	INCLUD. 25
27	319-907	DUST GUARD FIN	1	
28	320-876	BRUSH BLOCK	1	
29	999-054	CARBON BRUSH 5X6X11.5 (1 PAIR)	2	
30	319-918	BRUSH CAP	2	
31	302-086	TAPPING SCREW (W/FLANGE) D4X20 (BLACK)	7	
32		NAME PLATE	1	
33		HITACHI LABEL	1	
34	320-891	HOUSING (A).(B) SET	1	
* 35		CAUTION PLATE	1	FOR USA, CAN
36	994-532	MACHINE SCREW (W/SP. WASHER) M3X5	2	
37	321-533	DC-SPEED CONTROL SWITCH	1	
38	320-512	PUSHING BUTTON	1	
39	320-378	HOOK ASS'Y	1	INCLUD. 40
40	320-288	V-LOCK NUT M5	1	
41	949-565	LOCK NUT M4 (10 PCS.)	1	
42	306-952	STRAP (BLACK)	1	
43	320-882	SLEEVE	1	
44	676-386	MACHINE SCREW (W/WASHERS) M4X25	1	
45	319-926	HOOK SPRING	1	
46	320-881	SPECIAL SCREW (A) M5	1	
* 47	315-130	BATTERY EB 14B (W/ENGLISH N.P.)	1	
* 47	315-128	BATTERY EB 14B (W/ENGLISH N.P.)	1	FOR NZL
* 47	315-129	BATTERY EB 14B (W/ENGLISH N.P.)	1	FOR USA, CAN
* 47	318-372	BATTERY EB 1430H (W/ENGLISH N.P.)	1	

