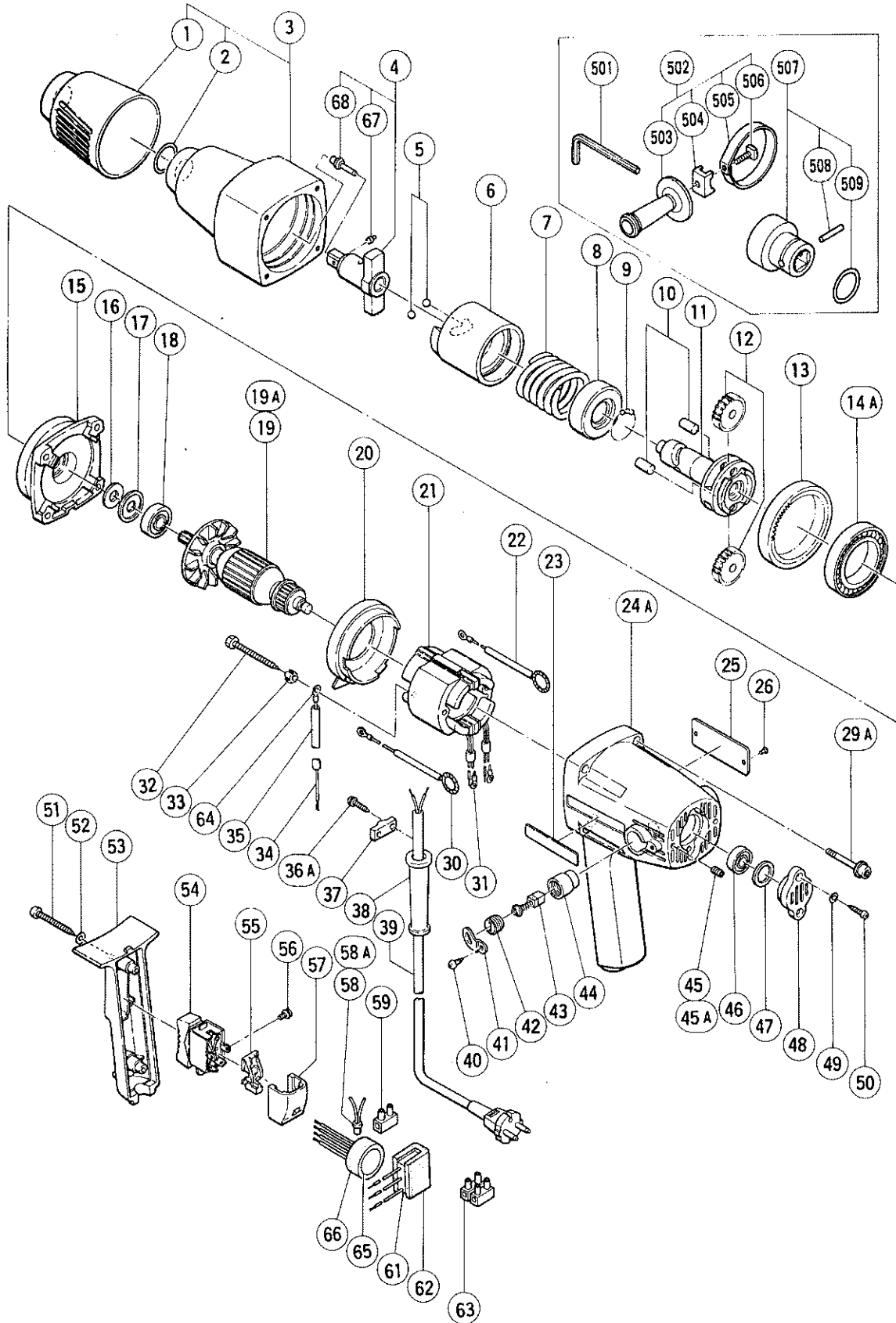


## ELECTRIC TOOL PARTS LIST

■ IMPACT WRENCH  
Model WH 16

1993 · 5 · 31  
(E4)



## PARTS

WH 16

ITEM NO.	CODE NO.	DESCRIPTION	NO. USED	REMARKS
1	985-174	BUMPER	1	
2	944-486	O - RING (1AP - 20)	1	
3	985-173	HAMMER CASE ASS'Y	1	INCLUD.1,2
* 4	985-188	ANVIL (A)	1	
* 4	985-207	ANVIL (B) ASS'Y	1	INCLUD.67,68 FOR USA,CAN,SUI,FRA,ITA, DEN,NOR,AUS,SWE
5	959-150	STEEL BALL D8.35 (10 PCS.)	2	
6	985-172	HAMMER	1	
7	985-171	SPRING	1	
8	985-170	SPRING SEAT	1	
9	959-148	STEEL BALL D3.175 (10 PCS.)	22	
10	985-189	NEEDLE ROLLER	2	
11	985-168	SPINDLE	1	
12	318-446	IDLE GEAR	2	
13	955-124	RING GEAR	1	
14A	690-8ZZ	BALL BEARING 6908ZZC2PS2S	1	
15	985-164	INNER COVER	1	
16	985-165	FELT PACKING	1	
17	985-166	PACKING WASHER	1	
18	600-0VV	BALL BEARING 6000VVCMP2S	1	
* 19	985-183E	ARMATURE 220V - 230V	1	
* 19	985-183F	ARMATURE 240V	1	
* 19A	985-183U	ARMATURE ASS'Y 110V - 115V	1	INCLUD.18,46
20	985-163	FAN GUIDE	1	
* 21	985-181C	STATOR ASS'Y 110V - 115V	1	INCLUD.31
* 21	985-181E	STATOR ASS'Y 220V - 230V	1	INCLUD.31
* 21	985-181F	STATOR ASS'Y 240V	1	INCLUD.31
* 21	985-181G	STATOR ASS'Y 220V - 230V	1	INCLUD.31 FOR NZL,FRG,SUI
* 21	985-181K	STATOR ASS'Y 220V - 230V	1	INCLUD.31 FOR SAF,FRA,HOL,DEN,FIN,ITA, SWE,AUT
* 21	985-181H	STATOR ASS'Y 240V	1	INCLUD.31 FOR GBR
* 21	985-181J	STATOR ASS'Y 110V	1	INCLUD.31 FOR GBR
* 22	985-186	INTERNAL WIRE	1	
* 22	985-192	INTERNAL WIRE	1	FOR USA,CAN
23	957-561	HITACHI LABEL	1	
24A	985-160	HOUSING ASS'Y	1	INCLUD.44,45A
25		NAME PLATE	1	
* 26	932-642	RIVET D2.5X2.8	1	FOR CAN
29A	980-951	HEX. SOCKET HD. BOLT (W/FLANGE) M5X45	4	
* 30	985-187	INTERNAL WIRE	1	
* 30	985-193	INTERNAL WIRE	1	FOR USA,CAN
31	960-356	TERMINAL (A) M3.5 (10 PCS.)	2	
32	981-824	HEX. HD. TAPPING SCREW D4X45	2	
33	960-107	SPECIAL WASHER	2	
* 34	985-185	INTERNAL WIRE	1	FOR SUI
* 34	985-191	INTERNAL WIRE	1	FOR FIN
* 35	985-194	TUBE D2.5	1	FOR NZL,GBR,SAF,FRG,FRA,HOL,DEN,FIN, SWE,AUT,SUI
36A	984-750	TAPPING SCREW (W/FLANGE) D4X16	2	
37	937-631	CORD CLIP	1	
* 38	953-327	CORD ARMOR D8.8	1	

\*: ALTERNATIVE PARTS

## PARTS

WH 16

ITEM NO.	CODE NO.	DESCRIPTION	NO. USED	REMARKS	
* 38	938-051	CORD ARMOR D10.1	1		
* 39	500-201Z	CORD	1	(CORD ARMOR D10.1)	
* 39	500-216Z	CORD	1	(CORD ARMOR D8.8) FOR NZL	
* 39	500-221Z	CORD	1	(CORD ARMOR D10.1) FOR SIN,KUW	
* 39	500-231Z	CORD	1	(CORD ARMOR D8.8) FOR GBR,SAF	
* 39	500-234Z	CORD	1	(CORD ARMOR D8.8) FOR INA,MLT	
* 39	500-240Z	CORD	1	(CORD ARMOR D8.8) FOR USA,CAN	
* 39	500-245Z	CORD	1	(CORD ARMOR D10.1) FOR SYR	
* 39	500-247Z	CORD	1	(CORD ARMOR D10.1) FOR FRG,FRA,HOL, DEN,ITA,FIN,SWE,AUT	
* 39	500-228Z	CORD	1	(CORD ARMOR D8.8) FOR AUS	
* 39	500-248Z	CORD	1	(CORD ARMOR D10.1) FOR SUI	
	40	958-715	TAPPING SCREW D4X10	2	
	41	985-179	CAP COVER	2	
	42	937-847	BRUSH CAP	2	
	43	999-021	CARBON BRUSH (1 PAIR)	2	
	44	937-848	BRUSH HOLDER	2	
	45	961-681	HEX. SOCKET SET SCREW M4X5	2	TILL 10.1985
	45A	938-477	HEX. SOCKET SET SCREW M5X8	2	SINCE 11.1985
	46	608-VVM	BALL BEARING 608VVMC2EPS2L	1	
	47	985-198	RUBBER WASHER	1	
	48	985-162	TAIL COVER	1	
	49	949-453	SPRING WASHER M4 (10 PCS.)	2	
	50	954-004	TAPPING SCREW D4X16	2	
	51	954-015	TAPPING SCREW D4X35	2	
	52	949-423	WASHER M4 (10 PCS.)	2	
	53	985-178	HANDLE COVER	1	
	54	985-103	SWITCH (2P SCREW TYPE)	1	INCLUD.56
	55	985-176	SWITCH ADAPTER	1	
	56	980-080	MACHINE SCREW (W/WASHER) M3.5X5	4	
	57	985-177	SWITCH HOLDER	1	
* 58	959-141	CONNECTOR 50092 (10 PCS.)	2	FOR NOR	
* 58A	959-141	CONNECTOR 50092 (10 PCS.)	1	FOR SUI	
* 59	982-805Z	PILLAR TERMINAL (B)	1	FOR FIN	
* 61	994-273	NOISE SUPPRESSOR	1	FOR ITA,FRG,FRA,HOL,DEN,FIN,SWE,AUT, NZL,GBR,SAF	
* 61	930-030	NOISE SUPPRESSOR	1	FOR NOR	
* 61	960-283Z	NOISE SUPPRESSOR	1	FOR SUI	
* 62	930-153	SUPPORT (B)	1	FOR NOISE SUPPRESSOR	
* 62	930-198	SUPPORT (B)	1	FOR NOISE SUPPRESSOR FOR NOR	
* 63	983-418Z	PILLAR TERMINAL (B)	1		
* 63	958-308Z	PILLAR TERMINAL (A)	1	FOR NZL,GBR,SAF,ITA,FRG,FRA,HOL,DEN, FIN,SWE,AUT,SUI	
* 64	980-083	TERMINAL	1	FOR FRG,FRA,HOL,DEN,SWE,AUT,NZL,GBR, SAF,ITA	
* 65	955-908	CHOKE COIL	1	FOR NOR	
* 66	953-330	SUPPORT (B)	1	FOR NOR	
* 67	985-208	PLUNGER	1	FOR ANVIL (B) ASS'Y	
* 68	985-209	PIN RETAINER	1	FOR ANVIL (B) ASS'Y	

\*: ALTERNATIVE PARTS



