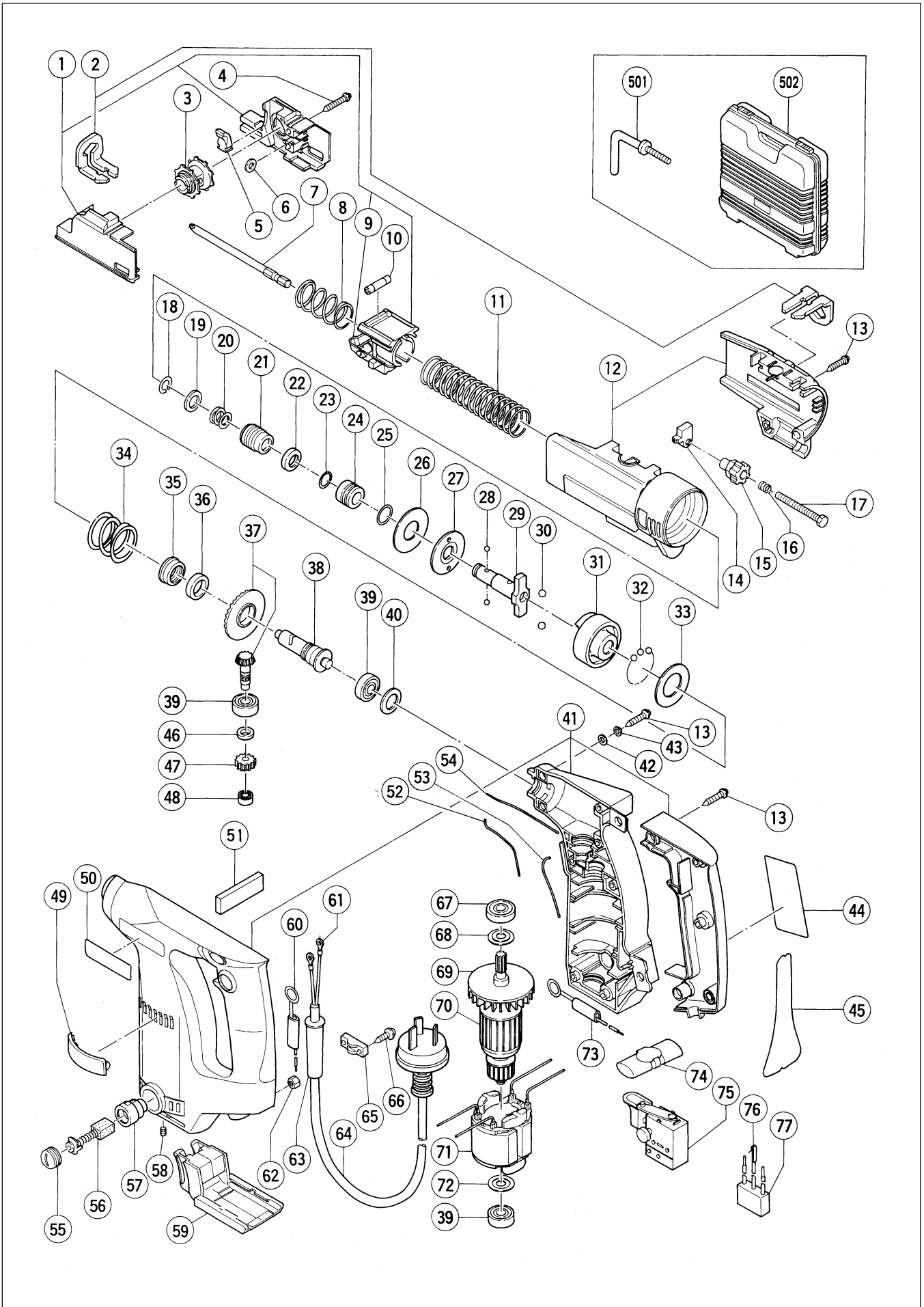


Assembly Diagram for WF 4V



PARTS

WF 4V

ITEM NO.	CODE NO.	DESCRIPTION	NO. USED	REMARKS
1	313-733	SLIDER ASS'Y	1	INCLUD.9
2	312-420	TOP ADJUSTER (A).(B) SET	1	
3	313-758	SPROCKET	1	
4	304-035	TAPPING SCREW (W/FLANGE) D4X25 (BLACK)	2	
5	312-421	SCREW STOPPER (A)	2	
6	312-424	BIT GUIDE	1	
7	313-880	+ DRIVER BIT (A) NO.2 109L	1	
8	312-814	SPRING (B)	1	
9	312-510	LINK PIECE	1	
10	312-418	ROLLER	1	
11	312-417	SPRING (A)	1	
12	312-416	SLIDER CASE (A).(B) SET	1	
13	302-086	TAPPING SCREW (W/FLANGE) D4X20 (BLACK)	16	
14	312-419	STOPPER	1	
15	312-428	KNOB	1	
16	312-430	SPRING	1	
17	312-429	BOLT M5X50	1	
18	995-933	RETAINING RING	1	
19	307-899	RETAINER	1	
20	995-931	GUIDE SPRING	1	
21	307-782	GUIDE SLEEVE (A)	1	
22	314-271	OIL SEAL 12X18X3	1	
23	314-272	O-RING (A)	1	
24	314-270	METAL D20X16	1	
25	314-273	O-RING (B)	1	
26	302-328	RUBBER WASHER	1	
27	302-329	WASHER (F)	1	
28	959-148	STEEL BALL D3.175 (10 PCS.)	2	
29	318-158	ANVIL (M)	1	
30	959-154	STEEL BALL D5.556 (10 PCS.)	2	
31	314-269	HAMMER (A)	1	
32	959-155	STEEL BALL D3.97 (10 PCS.)	21	
33	302-331	WASHER (G)	1	
34	312-413	SPRING	1	
35	314-268	STOPPER (A)	1	
36	941-732	WASHER (A)	1	
37	314-266	GEAR	1	
38	314-267	SPINDLE (A)	1	
39	608-VVM	BALL BEARING 608VVC2PS2L	3	
40	987-641	WASHER (A)	1	
41	318-155	HOUSING (A).(B) SET	1	INCLUD.45,52-54,57,58,60,73
42	949-429	BOLT WASHER M4 (10 PCS.)	6	
43	314-279	BELLEVILLE SPRING M4 (BLACK)	6	
44		NAME PLATE	1	
45	312-815	GRIP TAPE	1	
46	314-265	DISTANCE WASHER D13X6.5	1	
47	314-264	FIRST GEAR	1	
48	314-263	BALL BEARING (B) MR126ZZ	1	
49	314-629	RUBBER COVER (B)	1	
50		HITACHI LABEL	1	
51	314-284	FELT	1	

* : ALTERNATIVE PARTS

9 - 99

