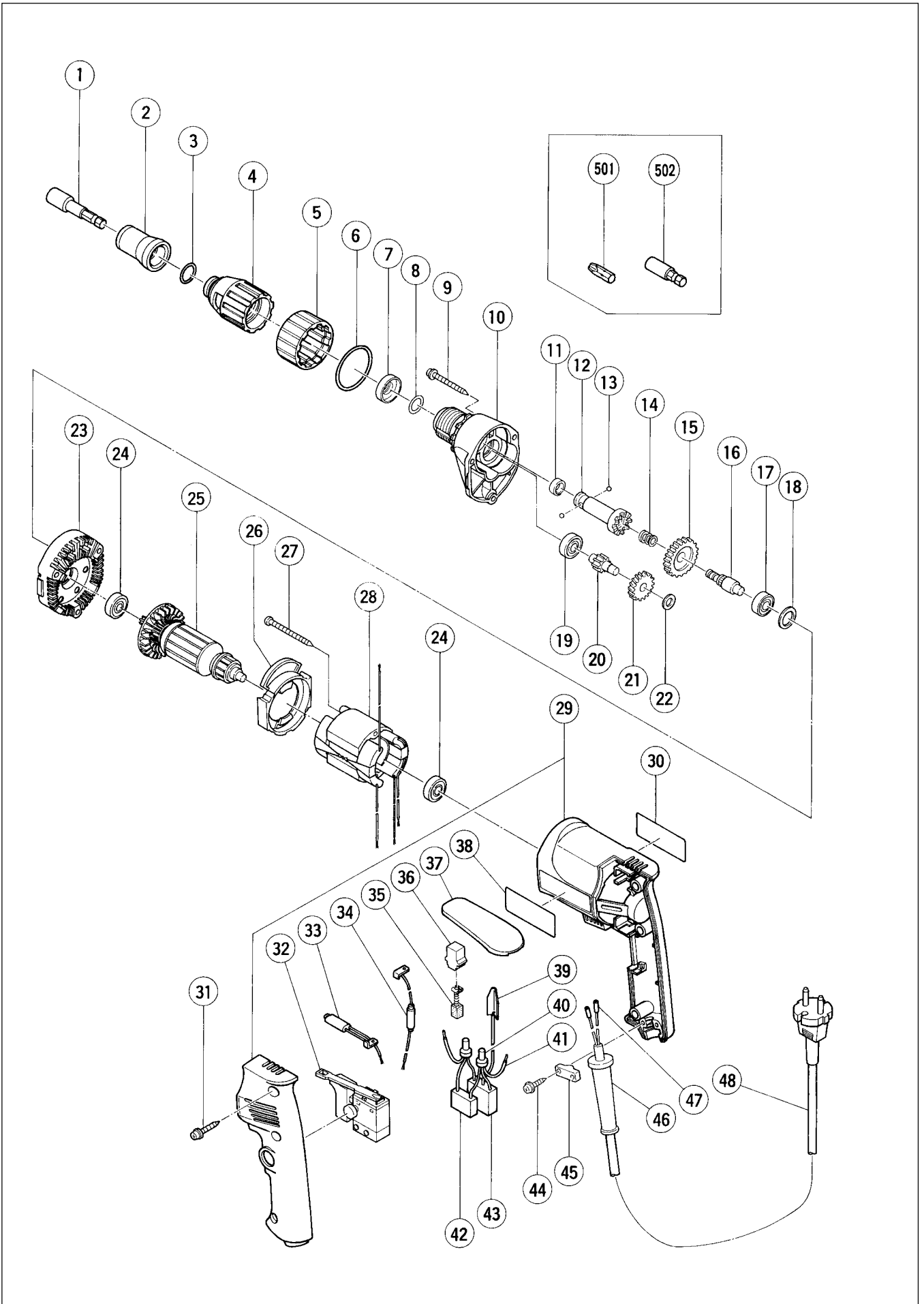


Assembly Diagram for W 6VB2



PARTS

W 6VB2

ITEM NO.	CODE NO.	DESCRIPTION	NO. USED	REMARKS		
*	1	985-322	MAGNETIC HEX. SOCKET 5/16"X65L	1	FOR AUS,GBR,NOR,USA	
*	1	985-321	MAGNETIC HEX. SOCKET 10MMX65L	1	FOR HOL,FIN,CHN	
*	2	317-670	SUB STOPPER (B) FOR H3/8,H10 HEX. SOCKET	1	FOR HOL,FIN,CHN	
*	2	317-671	SUB STOPPER (B) FOR H5/16 HEX. SOCKET	1	FOR AUS,GBR,NOR,USA	
*	2	317-673	SUB STOPPER (C) FOR BIT HOLDER (75L)	1	FOR FRG	
*	2	317-672	SUB STOPPER (A) FOR BIT HOLDER (41L)	1	FOR FRG,FRA,HOL,AUT	
*	2	317-899	SUB STOPPER (D) FOR HEX. SOCKET	1	FOR FRA	
	3	876-031	O-RING (S-16)	1		
	4	317-666	LOCATOR (A)	1		
	5	317-665	LOCK SLEEVE (A)	1		
	6	873-731	O-RING (S-28)	1		
	7	971-468	FRINGER (A)	1		
	8	317-662	O-RING (F)	1		
	9	306-664	TAPPING SCREW (W/FLANGE) D4X40	3		
	10	317-661	GEAR COVER ASS'Y	1	INCLUD.8,19	
	11	872-573	SET RING	1		
	12	317-664	SOCKET (B) ASS'Y	1	INCLUD.11,13	
	13	959-148	STEEL BALL D3.175 (10 PCS.)	2		
	14	306-024	SPRING	1		
	15	317-771	GEAR ASS'Y	1	INCLUD.16	
	16	307-340	GEAR SHAFT	1		
	17	608-VVM	BALL BEARING 608VVMC2EPS2L	1		
	18	987-641	WASHER (A)	1		
	19	608-VVM	BALL BEARING 608VVMC2EPS2L	1		
	20	317-770	SECOND PINION ASS'Y	1	INCLUD.21	
	21	317-772	FIRST GEAR	1		
	22	317-663	WASHER	1		
	23	317-660	INNER COVER ASS'Y	1	INCLUD.17,18	
	24	608-VVM	BALL BEARING 608VVMC2EPS2L	2		
*	25	360-492C	ARMATURE 110V	1		
*	25	360-492U	ARMATURE ASS'Y 115V	1	INCLUD.24	
*	25	360-492E	ARMATURE 220V-230V	1		
*	25	360-492F	ARMATURE 240V	1		
	26	305-398	FAN GUIDE (B)	1		
	27	950-515	TAPPING SCREW D4X50	2		
*	28	340-436C	STATOR 110V-115V	1		
*	28	340-436E	STATOR 220V-230V	1		
*	28	340-224F	STATOR 240V	1		
	29	317-659	HOUSING.HANDLE COVER SET	1		
	30		NAME PLATE	1		
	31	302-086	TAPPING SCREW (W/FLANGE) D4X20 (BLACK)	3		
*	32	314-916	SPEED CONTROL SWITCH (2P) 100V-115V	1	FOR GBR (110V),USA	
*	32	314-921	SPEED CONTROL SWITCH (2P) 220V-240V	1		
*	33	317-668	INTERNAL WIRE (A)	1	FOR AUS,GBR,FRG,FRA,HOL,FIN,AUT,NOR	
*	33	314-917	INTERNAL WIRE (B) (BLUE)	1	FOR USA	
*	34	317-669	INTERNAL WIRE (B)	1	FOR AUS,GBR,FRG,FRA,HOL,FIN,AUT,NOR	
*	34	314-918	INTERNAL WIRE (B) (BROWN)	1	FOR USA	
	35	999-041	CARBON BRUSH (1 PAIR)	2		
	36	955-203	BRUSH HOLDER	2		
	37	317-676	HOOK (A)	1		
	38		HITACHI LABEL	1		

PARTS

ITEM NO.	CODE NO.	DESCRIPTION	NO. USED	REMARKS
39	992-635	EARTH TERMINAL	1	FOR NOISE SUPPRESSOR
40	959-140	CONNECTOR 50091 (10 PCS.)	2	
41	317-667	INTERNAL WIRE	2	
* 42	930-039	NOISE SUPPRESSOR	1	EXCEPT FOR USA
* 43	994-273	NOISE SUPPRESSOR	1	EXCEPT FOR USA
44	305-812	TAPPING SCREW (W/FLANGE) D4X16 (BLACK)	2	
45	937-631	CORD CLIP	1	
46	953-327	CORD ARMOR D8.8	1	
47	981-373	TUBE (D)	2	FOR CORD
* 48	500-409Z	CORD	1	(CORD ARMOR D8.8)
* 48	500-439Z	CORD	1	(CORD ARMOR D8.8) FOR AUS
* 48	500-436Z	CORD	1	(CORD ARMOR D8.8) FOR GBR (230V)
* 48	971-675Z	CORD	1	(CORD ARMOR D8.8) FOR GBR (110V)
* 48	500-240Z	CORD	1	(CORD ARMOR D8.8) FOR USA
* 48	500-456Z	CORD	1	(CORD ARMOR D8.8) FOR CHN

STANDARD ACCESSORIES

W 6VB2

ITEM NO.	CODE NO.	DESCRIPTION	NO. USED	REMARKS	
	501	971-511Z	+ DRIVER BIT (A) NO.2 25L	1	
*	502	317-674	MAGNETIC BIT HOLDER ASS'Y (41L)	1	INCLUD.501 FOR FRG,FRA,HOL,AUT
*	502	982-554Z	MAGNETIC BIT HOLDER (75L)	1	FOR FRG

OPTIONAL ACCESSORIES

ITEM NO.	CODE NO.	DESCRIPTION	NO. USED	REMARKS
601	317-827	SUB STOPPER (B) H1/4 HEX. SOCKET	1	
602	985-326	NON-MAGNETIC HEX. SOCKET 3/8" 65L	1	
603	985-327	NON-MAGNETIC HEX. SOCKET 5/16" 65L	1	
604	985-328	NON-MAGNETIC HEX. SOCKET 1/4" 65L	1	
605	985-329	NON-MAGNETIC HEX. SOCKET 10MM 65L	1	
606	982-563Z	NON-MAGNETIC BIT HOLDER	1	
607	982-554Z	MAGNETIC BIT HOLDER (75L)	1	
608	985-333	+ DRIVER BIT NO.1 25L	1	
609	971-512Z	+ DRIVER BIT (A) NO.3 25L	1	
610	985-334	+ DRIVER BIT NO.1 25L W/STEPPED ROD	1	
611	985-335	+ DRIVER BIT NO.2 25L W/STEPPED ROD	1	
612	985-336	- DRIVER BIT 4MMX25	1	
613	985-337	- DRIVER BIT 5MMX25	1	
614	985-338	- DRIVER BIT 6MMX25	1	
615	985-339	- DRIVER BIT 8MMX25	1	
616	985-340	- DRIVER BIT 4MMX25 (W/STEPPED ROD)	1	
617	985-341	- DRIVER BIT 5MMX25 (W/STEPPED ROD)	1	
618	985-342	HEX. BIT 4MMX25L	1	
619	985-343	HEX. BIT 5MMX25L	1	
620	985-344	HEX. BIT 6MMX25L	1	
621	985-330	MAGNETIC HEX. SOCKET 3/8"X65L	1	
622	985-332	MAGNETIC HEX. SOCKET 1/4"X65L	1	
623	310-904	CASE	1	