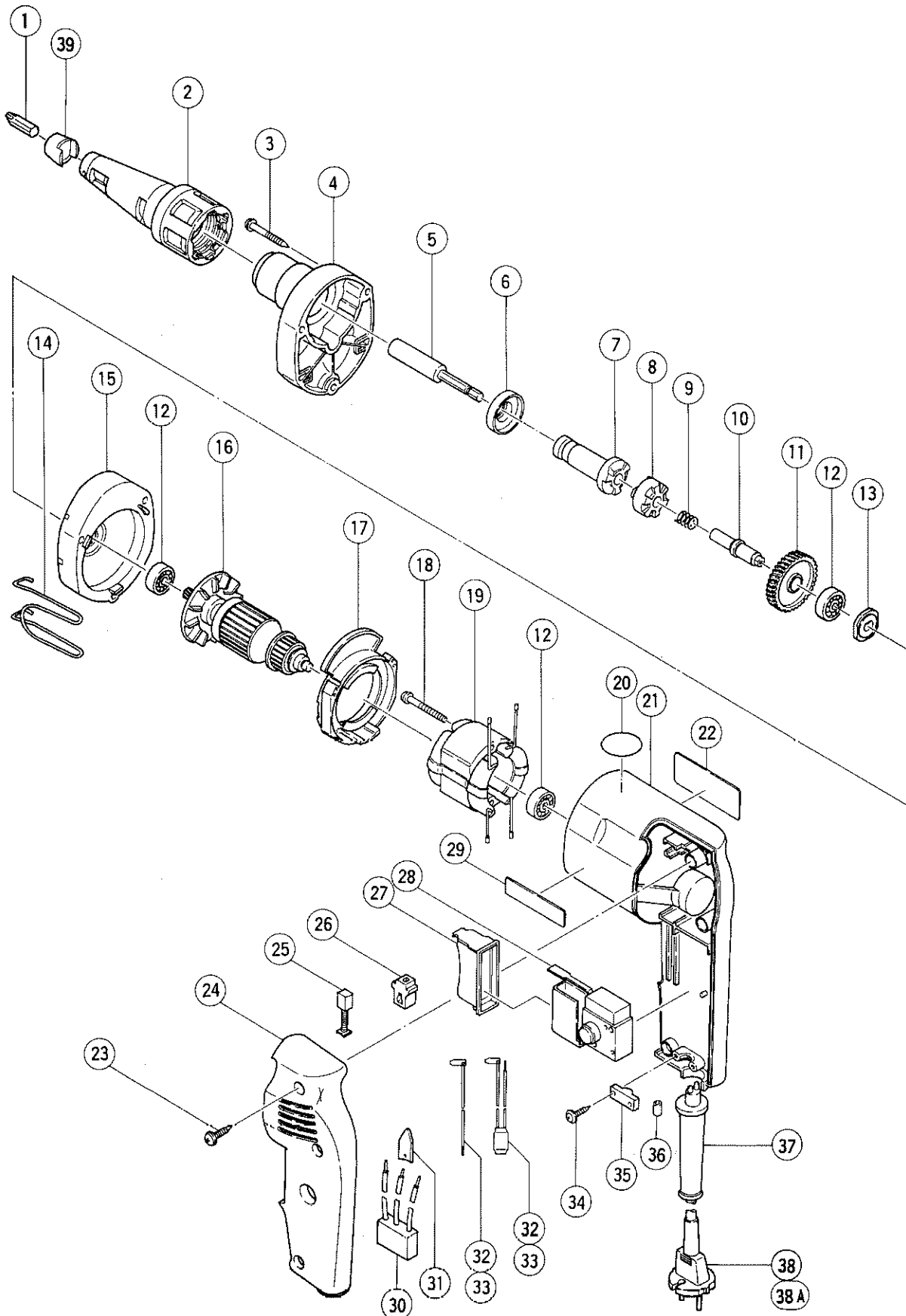


## ELECTRIC TOOL PARTS LIST

■ SCREW DRIVER  
Model W 6VA2

1993 · 5 · 31  
(E2)



## PARTS

W 6VA2

ITEM NO.	CODE NO.	DESCRIPTION	NO. USED	REMARKS	
1	971-511Z	+ DRIVER BIT (A) NO.2 25L	1		
2	982-555Z	LOCATOR (A)	1		
3	303-894	TAPPING SCREW (W/FLANGE) D4X35	3		
4	303-893	GEAR COVER	1		
5	982-554Z	MAGNETIC BIT HOLDER	1		
6	971-468	FRINGER (A)	1		
7	303-892	SOCKET	1		
8	303-891	CLUTCH DISC	1		
9	303-890	SPRING	1		
10	303-889	GEAR SHAFT	1		
11	303-703	GEAR (B)	1		
12	608-VVM	BALL BEARING 608VVMC2EPS2L	3		
13	303-887	WASHER (A)	1		
14	950-511	HOOK	1		
15	303-886	INNER COVER	1		
*	16	360-212U	ARMATURE ASS'Y 110V - 127V	1	INCLUD.12
*	16	360-212E	ARMATURE 220V - 230V	1	
*	16	360-212F	ARMATURE 240V	1	
	17	303-885	FAN GUIDE	1	
	18	992-631	TAPPING SCREW (W/SP. WASHER) D4X50	2	
*	19	340-224J	STATOR 110V - 115V	1	
*	19	340-224D	STATOR 120V - 127V	1	
*	19	340-224G	STATOR 220V - 230V	1	
*	19	340-224H	STATOR 240V	1	
*	20		MARK PLATE	1	FOR SWE
	21	303-884	HOUSING	1	
	22		NAME PLATE	1	
	23	301-653	TAPPING SCREW (W/FLANGE) D4X20	3	
	24	303-895	HANDLE COVER	1	
*	25	999-041	CARBON BRUSH (1 PAIR)	2	
*	25	999-080	CARBON BRUSH (AUTO STOP TYPE) (1 PAIR)	2	FOR USA
	26	930-483	BRUSH HOLDER	2	
	27	303-898	SWITCH RUBBER COVER	1	
*	28	303-897	SWITCH (J) (2P PILLAR TYPE) W/LOCK	1	110V - 127V
*	28	303-898	SWITCH (K) (2P PILLAR TYPE) W/LOCK	1	220V - 240V
	29		HITACHI LABEL	1	
*	30	994-273	NOISE SUPPRESSOR	1	FOR GBR,FRG,FRA,HOL,DEN,FIN,SWE,NOR, SUI,ITA
*	31	992-635	EARTH TERMINAL	1	FOR NOISE SUPPRESSOR
*	32	303-699	INTERNAL WIRE CHOKE COIL	1	
*	32	303-700	INTERNAL WIRE CHOKE COIL	1	FOR GBR,FRG,FRA,HOL,DEN,FIN,SWE,NOR, ITA
*	32	305-196	INTERNAL WIRE CHOKE COIL	1	FOR SUI
*	33	303-701	INTERNAL WIRE CHOKE COIL	1	
*	33	303-702	INTERNAL WIRE CHOKE COIL	1	FOR GBR,FRG,FRA,HOL,DEN,FIN,SWE,NOR, SUI,ITA
	34	984-750	TAPPING SCREW (W/FLANGE) D4X16	2	
	35	937-631	CORD CLIP	1	
*	36	981-373	TUBE (D)	2	FOR CORD
*	37	953-327	CORD ARMOR D8.8	1	
*	37	938-051	CORD ARMOR D10.1	1	

\*: ALTERNATIVE PARTS

**PARTS**

W 6VA2

ITEM NO.	CODE NO.	DESCRIPTION	NO. USED	REMARKS
* 38	500-409Z	CORD	1	(CORD ARMOR D8.8)
* 38	500-240Z	CORD	1	(CORD ARMOR D8.8) FOR USA,CAN
* 38	500-421Z	CORD	1	(CORD ARMOR D8.8) FOR SIN,KUW
* 38	500-226Z	CORD	1	(CORD ARMOR D8.8) FOR NGU,AUS
* 38	500-245Z	CORD	1	(CORD ARMOR D10.1) FOR SYR
* 38	500-231Z	CORD	1	(CORD ARMOR D8.8) FOR GBR (110V)
* 38	500-395Z	CORD	1	(CORD ARMOR D8.8) FOR SUI
* 38A	500-436Z	CORD	1	(CORD ARMOR D8.8) FOR GBR (240V)
* 39	305-690	RUBBER RING	1	FOR GBR,FRG,FRA,HOL,DEN,FIN,SWE

**OPTIONAL ACCESSORIES**

ITEM NO.	CODE NO.	DESCRIPTION	NO. USED	REMARKS
601	982-568Z	LOCATOR	1	
602	982-563Z	NON - MAGNETIC BIT HOLDER	1	
603	985-333	+ DRIVER BIT NO.1 25L	1	
604	971-512Z	+ DRIVER BIT (A) NO.3 25L	1	
605	985-334	+ DRIVER BIT NO.1 25L W/STEPED ROD	1	
606	985-335	+ DRIVER BIT NO.2 25L W/STEPED ROD	1	
607	982-568	CASE (STEEL) ASS'Y	1	

\* : ALTERNATIVE PARTS