

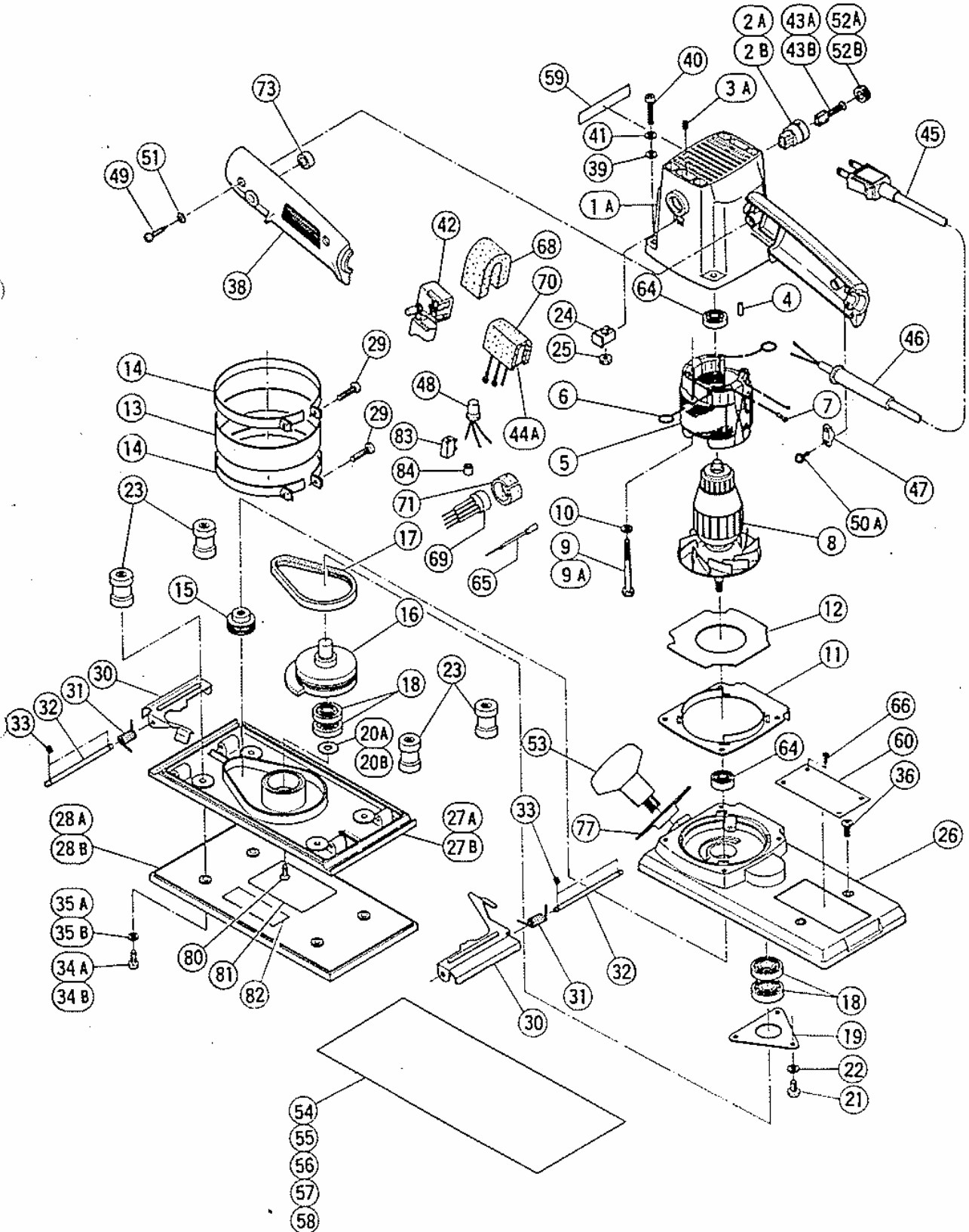
ELECTRIC TOOL PARTS LIST

■ ORBITAL SANDER

1990·1·17

Model SO-110

SO-110(E6)



PARTS

SO-110

ITEM NO.	CODE NO.	DESCRIPTION	NO. USED	REMARKS
1A	990-801	HOUSING ASSY	1	INCLUD.2B,3A,9A
2A	931-265	BRUSH HOLDER	2	TILL 4.1984
2B	990-721	BRUSH HOLDER	2	SINCE 5.1984
3A	938-477	HEX. SOCKET SET SCREW M5X8	2	
4	931-701	BEARING LOCK	1	
* 5	953-303C	STATOR ASSY 110V-115V	1	INCLUD.6,7
* 5	953-303D	STATOR ASSY 120V-127V	1	INCLUD.6,7
* 5	953-303E	STATOR ASSY 220V-230V	1	INCLUD.6,7
* 5	953-303F	STATOR ASSY 240V	1	INCLUD.6,7
* 5	953-303G	STATOR ASSY 220V-230V	1	INCLUD.6,7 FOR NZL,EUROPE
* 5	953-303H	STATOR ASSY 240V	1	INCLUD.6,7 FOR AUS
* 5	953-303J	STATOR ASSY 110V	1	INCLUD.6,7 FOR GBR
6	930-630	BRUSH TERMINAL	2	
* 7	960-356	TERMINAL (A) M3.5 (10 PCS.)	2	
* 8	953-305C	ARMATURE 110V-115V	1	
* 8	953-305D	ARMATURE 120V-127V	1	
* 8	953-305E	ARMATURE 220V-230V	1	
* 8	953-305F	ARMATURE 240V	1	
* 8	953-305G	ARMATURE 220V-230V	1	FOR EUROPE
* 8	953-305H	ARMATURE 240V	1	FOR GBR
* 8	953-305J	ARMATURE 110V-115V	1	FOR GBR
9	949-247	MACHINE SCREW M5X35 (10 PCS.)	2	TILL 9.1987
9A	980-864	HEX. HD. TAPPING SCREW D5X40	2	SINCE 10.1987
10	949-454	SPRING WASHER M5 (10 PCS.)	2	TILL 9.1987
11	953-306	INNER GUIDE (A)	1	
12	953-307	FAN GUIDE	1	
13	953-308	RUBBER SEAL	1	
14	953-309	SEAL BAND	2	
15	953-310	PULLEY (A)	1	
16	953-344	PULLEY (B)	1	
17	953-312	BELT	1	
18	600-1VV	BALL BEARING 6001VVCMP2L	4	
19	953-313	BEARING COVER	1	
* 20A	953-314	WASHER	1	TILL 6.1980
* 20B	953-338	WASHER	1	SINCE 7.1980
21	949-216	MACHINE SCREW M4X10 (10 PCS.)	3	
22	949-453	SPRING WASHER M4 (10 PCS.)	3	
23	953-315	RUBBER LEG	4	
24	953-232	NUT COVER	2	TILL 9.1987
25	949-555	NUT M5 (10 PCS.)	2	TILL 9.1987
* 26	953-316	FRAME	1	
* 26	953-329P	FRAME	1	FOR USA,CAN
* 27A	953-335	BOTTOM PLATE ASSY	1	INCLUD.16,20B,28B,80,81 TILL 6.1980
* 27A	953-340Z	BOTTOM PLATE ASSY	1	INCLUD.16,20B,28B,80,81,82 TILL 1.1980 FOR SUI,FRA
* 27B	953-336	BOTTOM PLATE ASSY	1	INCLUD.81 SINCE 7.1980
* 27B	953-341Z	BOTTOM PLATE ASSY	1	INCLUD.81,82 SINCE 2.1980 FOR SUI,FRA
* 28A	953-332	PAD	1	TILL 6.1980
* 28B	953-337	SPONGE PAD	1	SINCE 7.1980
* 28B	953-342Z	FELT PAD	1	SINCE 2.1980 FOR SUI,FRA
29	949-221	MACHINE SCREW M4X20 (10 PCS.)	2	
30	953-319	PAPER HOLDER	2	
31	953-320	SPRING	2	

PARTS

SO-110

ITEM NO.	CODE NO.	DESCRIPTION	NO. USED	REMARKS	
	32	953-321	HOLDER BAR	2	
	33	872-971	RETAINING RING (E-TYPE) FOR D3 SHAFT	4	
*	34A	949-237	MACHINE SCREW M5X12 (10 PCS.)	5	TILL 6.1980
*	34B	949-237	MACHINE SCREW M5X12 (10 PCS.)	4	SINCE 7.1980
*	35A	949-454	SPRING WASHER M5 (10 PCS.)	5	TILL 6.1980
*	35B	949-454	SPRING WASHER M5 (10 PCS.)	4	SINCE 7.1980
	36	949-331	FLAT HD. SCREW M5X10 (10 PCS.)	4	
	37	953-322	DUST PLATE	1	TILL 2.1979
	38	953-323	HANDLE COVER	1	
	39	949-424	WASHER M5 (10 PCS.)	4	
	40	949-241	MACHINE SCREW M5X20 (10 PCS.)	4	
	41	949-454	SPRING WASHER M5 (10 PCS.)	4	
*	42	957-747	SWITCH (A) (1P SCREW TYPE) W/LOCK	1	
*	42	971-667Z	SWITCH (2P PILLAR TYPE) W/LOCK	1	
	43A	999-035	CARBON BRUSH (1 PAIR)	2	TILL 4.1984
	43B	999-021	CARBON BRUSH (1 PAIR)	2	SINCE 5.1984
*	44A	994-273	NOISE SUPPRESSOR	1	
*	45	500-212Z	CORD	1	(CORD ARMOR D8.8)FOR ASIA
	45	500-223Z	CORD	1	(CORD ARMOR D10.1)FOR SIN
*	45	500-226Z	CORD	1	(CORD ARMOR D8.8)FOR OCEANIA
*	45	500-231Z	CORD	1	(CORD ARMOR D8.8)FOR SAF
*	45	500-234Z	CORD	1	(CORD ARMOR D8.8)FOR EUROPE
*	45	500-237Z	CORD	1	(CORD ARMOR D8.8)FOR GBR
*	45	500-240Z	CORD	1	(CORD ARMOR D8.8)FOR USA
*	45	500-420Z	CORD	1	(CORD ARMOR D10.1)FOR SAU
*	45	500-423Z	CORD	1	(CORD ARMOR D8.8)FOR SAU
*	46	953-327	CORD ARMOR D8.8	1	
*	46	938-051	CORD ARMOR D10.1	1	
	47	937-631	CORD CLIP	1	
*	48	959-141	CONNECTOR 50092 (10 PCS.)	3	
	49	956-384	TAPPING SCREW D4X20	2	
	50A	984-750	TAPPING SCREW (W/FLANGE) D4X16	2	
	51	949-423	WASHER M4 (10 PCS.)	2	
	52A	931-266	BRUSH CAP	2	TILL 4.1984
	52B	937-847	BRUSH CAP	2	SINCE 5.1984
	53	953-324	HANDLE KNOB	1	
	54	939-771	SANDING PAPERS 114X280 AA60 (10 PCS.)	1	
	55	939-772	SANDING PAPERS 114X280 AA80 (10 PCS.)	1	
	56	939-774	SANDING PAPERS 114X280 AA120 (10 PCS.)	1	
	57	939-776	SANDING PAPERS 114X280 AA180 (10 PCS.)	1	
	58	939-778	SANDING PAPERS 114X280 AA240 (10 PCS.)	1	
	59	950-565	HITACHI LABEL	1	
*	60		NAME PLATE	1	
	64	608-VVM	BALL BEARING 608VVMC2EPS2L	2	
*	65	953-328Z	INTERNAL WIRE	2	
*	66	949-510	RIVET D2.5X4.8 (10 PCS.)	4	
	68	944-483	SUPPORT	1	
*	69	955-908	CHOKE COIL	1	
*	70	930-153	SUPPORT (B)	1	
*	71	953-330	SUPPORT (B)	1	
	73	940-811	PUSHING HOLDER	1	
	77	953-334	PLATE	1	

PARTS

SO-110

ITEM NO.	CODE NO.	DESCRIPTION	NO. USED	REMARKS
* 80	949-332	FLAT HD. SCREW M5X12 (10 PCS.)	1	SINCE 7.1980
* 81	953-339	BEARING SEAL	1	SINCE 7.1980
* 82	953-343Z	DOUBLE FACE TAPE	2	SINCE 2.1980 FOR SUI,FRA
* 83	958-308Z	PILLAR TERMINAL (A)	1	
* 84	981-373	TUBE (D)	2	

OPTIONAL ACCESSORIES

ITEM NO.	CODE NO.	DESCRIPTION	NO. USED	REMARKS
601	939-770	SANDING PAPERS 114X280 AA40 (10 PCS.)	1	
602	939-773	SANDING PAPERS 114X280 AA100 (10 PCS.)	1	
603	939-775	SANDING PAPERS 114X280 AA150 (10 PCS.)	1	
604	939-777	SANDING PAPERS 114X280 AA220 (10 PCS.)	1	

* : ALTERNATIVE PARTS