

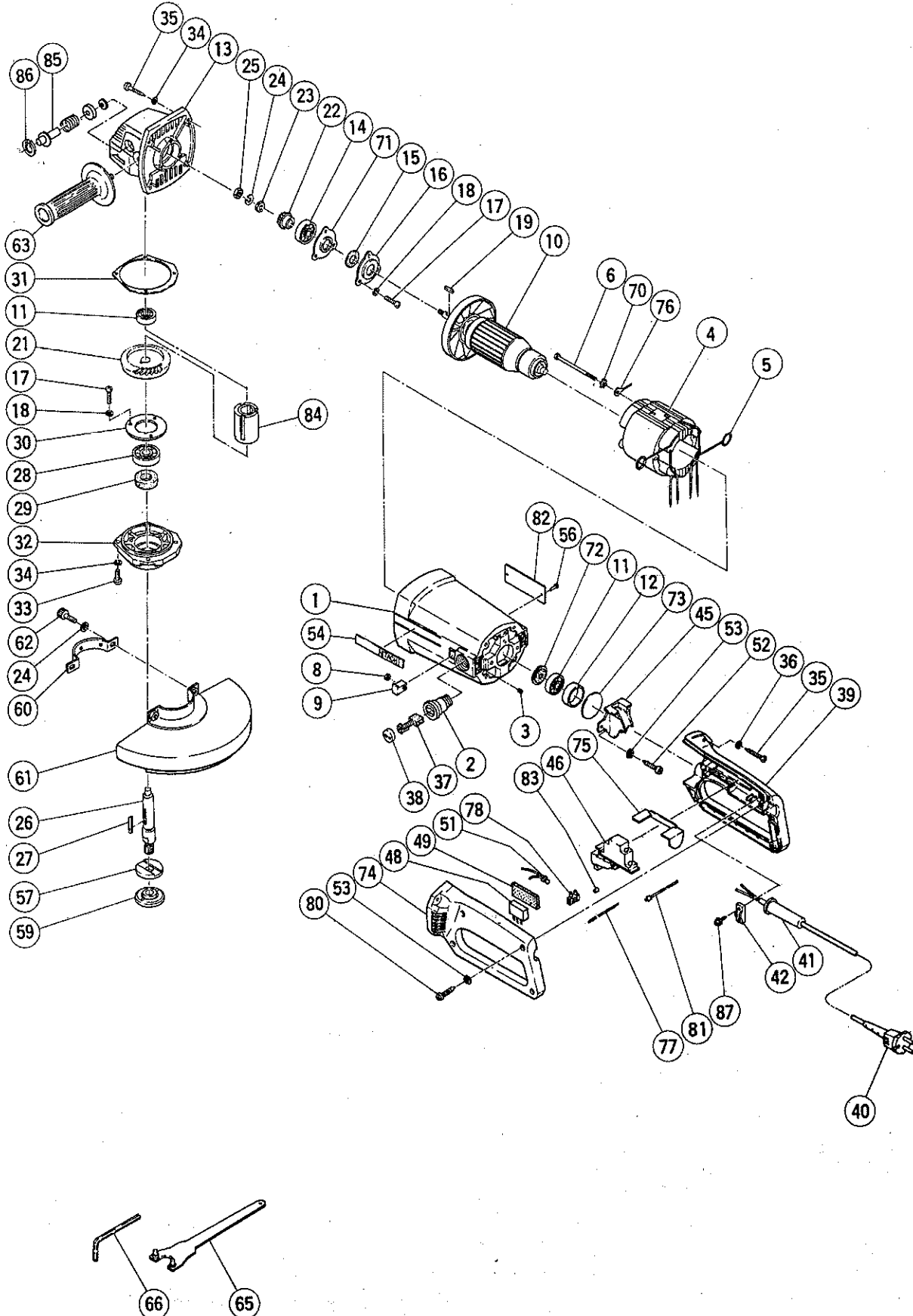
ELECTRIC TOOL PARTS LIST

■ DISC GRINDER

1987·11·15

Model PDU-180L

PDU-180L(E3)



PARTS

PDU-180L(E3)

Item No.	Code No.	Part Name	Q'ty	Remarks
1	937890Z	Housing Ass'y	1	includ. 2, 3
2	980487	Brush Holder	2	
3	949365	Slotted Set Screw M4 x 5	2	(10 pcs.)
4	—	Stator Ass'y	1	See alternative parts
5	958032	Brush Terminal	2	
6	937925	Bolt M5 x 80	2	
8	949555	Nut M5	2	(10 pcs.)
9	937892	Nut Cover	2	
10	—	Armature Ass'y	1	See alternative parts
11	939220	Ball Bearing (6200VVCM)	2	
12	937894	Bearing Bushing	1	
13	938106Z	Gear Cover Ass'y	1	includ. 85, 86
14	939250	Ball Bearing (6301VVCM)	1	
15	936853	Felt Packing (A)	1	
16	937896	Bearing Cover (A)	1	
17	949236	Machine Screw M5 x 10	6	(10 pcs.)
18	949454	Spring Lock Washer	6	for M5 (10 pcs.)
19	940533	Feather Key 3 x 3 x 30	1	
20	937930Z	Gear Ass'y	1	includ. 21, 22
21	937931Z	Gear	1	
22	937932Z	Pinion	1	
23	937988	Pawl Washer	1	
24	949457	Spring Lock Washer	3	for M8 (10 pcs.)
25	949568	Lock Nut M8	1	(10 pcs.)
26	938095Z	Spindle	1	
27	948920	Feather Key 4 x 4 x 30	1	
28	939252	Ball Bearing (6302VVCM)	1	
29	938099	Felt Packing (B)	1	
30	937035	Bearing Cover (B)	1	
31	937901	Seal Packing (B)	1	
32	937902	Packing Gland	1	
33	949239	Machine Screw M5 x 16	4	(10 pcs.)
34	949454	Spring Lock Washer	8	for M5 (10 pcs.)
35	937807	Tapping Screw D5 x 25	8	
36	949424	Washer	4	for M5 (10 pcs.)
37	—	Carbon Brush	2	See alternative parts
38	940540	Brush Cap	2	
39	981005	Handle (A)	1	
40	—	Cord	1	See alternative parts
41	940778	Cord Armor D10.7	1	
42	960266	Cord Clip	1	
45	937905	Bearing Cover	1	
46	—	Switch	1	See alternative parts
48	—	Noise Suppressor	1	See alternative parts
49	—	Support (B)	1	See alternative parts
51	959141	Connector (50092)	1	(10 pcs.)
52	954004	Tapping Screw D4 x 16	3	
53	949423	Washer	7	for M4 (10 pcs.)
54	938098	HITACHI Label	1	
56	949510	Rivet D2.5 x 4.8	2	(10 pcs.)
57	937907Z	Wheel Washer (A)	1	
59	937909Z	Wheel Nut	1	
60	937911	Set Ring (A)	1	

PARTS

PDU-180L(E3)

Item No.	Code No.	Part Name	Q'ty	Remarks
61	937934Z	Wheel Guard Ass'y	1	
62	949656	Hexagon Socket Hd. Bolt M8 x 20	2	(10 pcs.)
63	937981Z	Side Handle	1	
65	937913Z	Wrench (B)	1	
66	87242Z	Hexagon Bar Wrench 6 mm	1	for M8 bolt
70	956764	Special Washer	2	
71	—	Distance Plate	1	See alternative parts
72	955260	Dust Seal (A)	1	
73	937946	Bearing Seal	1	
74	981006	Handle (B)	1	
75	981007	Switch Adapter	1	
76	—	Internal Wire	1	See alternative parts
77	—	Internal Wire	1	See alternative parts
78	—	Pillar Terminal	1	See alternative parts
80	956384	Tapping Screw D4 x 20	4	
81	—	Band	1	
82	—	Name Plate	1	
83	—	Tube (D)	1	See alternative parts
84	938096	Sleeve	1	
85	938094	Lock Pin	1	
86	948011	C-Type Retaining Ring	1	for I.D. 16 Hole
87	984750	Tapping Screw D4 x 16	2	w/Flange

ALTERNATIVE PARTS

Item No.	Code No.	Part Name	Q'ty	Remarks
4	981000E	Stator Ass'y 220V ~ 230V	1	for F.R. Germany includ. 5
	981001E	Stator Ass'y 220V ~ 230V	1	includ. 5
	981001F	Stator Ass'y 240V	1	includ. 5
10	937945E	Armature Ass'y 220V ~ 240V	1	includ. 11, 72
	937942G	Armature Ass'y 220V ~ 240V	1	for U.K., Denmark, Finland, Netherland includ. 11, 72
37	999044	Carbon Brush	2	(2 pcs.)
	937943Z	Carbon Brush	2	Auto stop type (2 pcs.)
40	500245Z	Cord	1	for Syria
	500246Z	Cord	1	for U.K.
	980339Z	Cord	1	for Europe
46	981008	Double Pole Switch	1	w/lock
	981013Z	Double Pole Switch	1	w/o lock for Finland
48	500261Z	Noise Suppressor	1	for Europe
	500262Z	Noise Suppressor	1	for Finland
49	930153	Support (B)	1	for Noise Suppressor
71	937940	Distance Plate	1	for Europe

ALTERNATIVE PARTS

PDU-180L(E3)

Item No.	Code No.	Part Name	Q'ty	Remarks
76	981010	Internal Wire	1	for Finland
77	981002	Internal Wire	1	
	981003Z	Internal Wire	1	for Europe
78	938307Z	Pillar Terminal	1	for Finland
81	983684	Band	1	for Europe
83	981373	Tube (D)	1	

OPTIONAL ACCESSORIES

Item No.	Code No.	Part Name	Q'ty	Remarks
601	937933Z	Resinoid Wheel 180 mm	1	(10 pcs.)
602	937918Z	Inner Washer	1	for cut-off wheel
603	937919Z	Wheel Washer	1	for cut-off wheel
604	937915	Thrust Washer (B)	1	