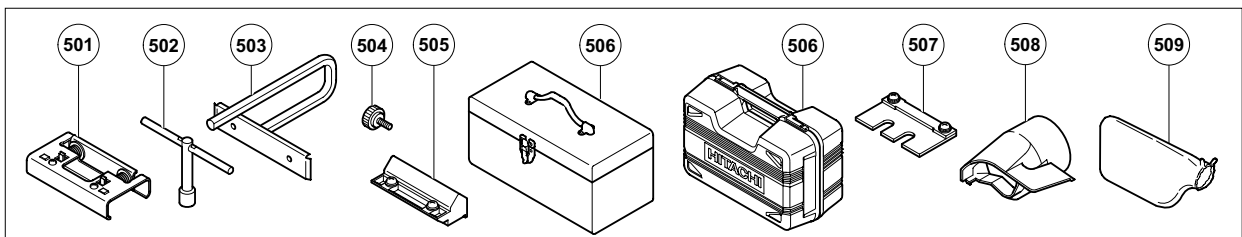
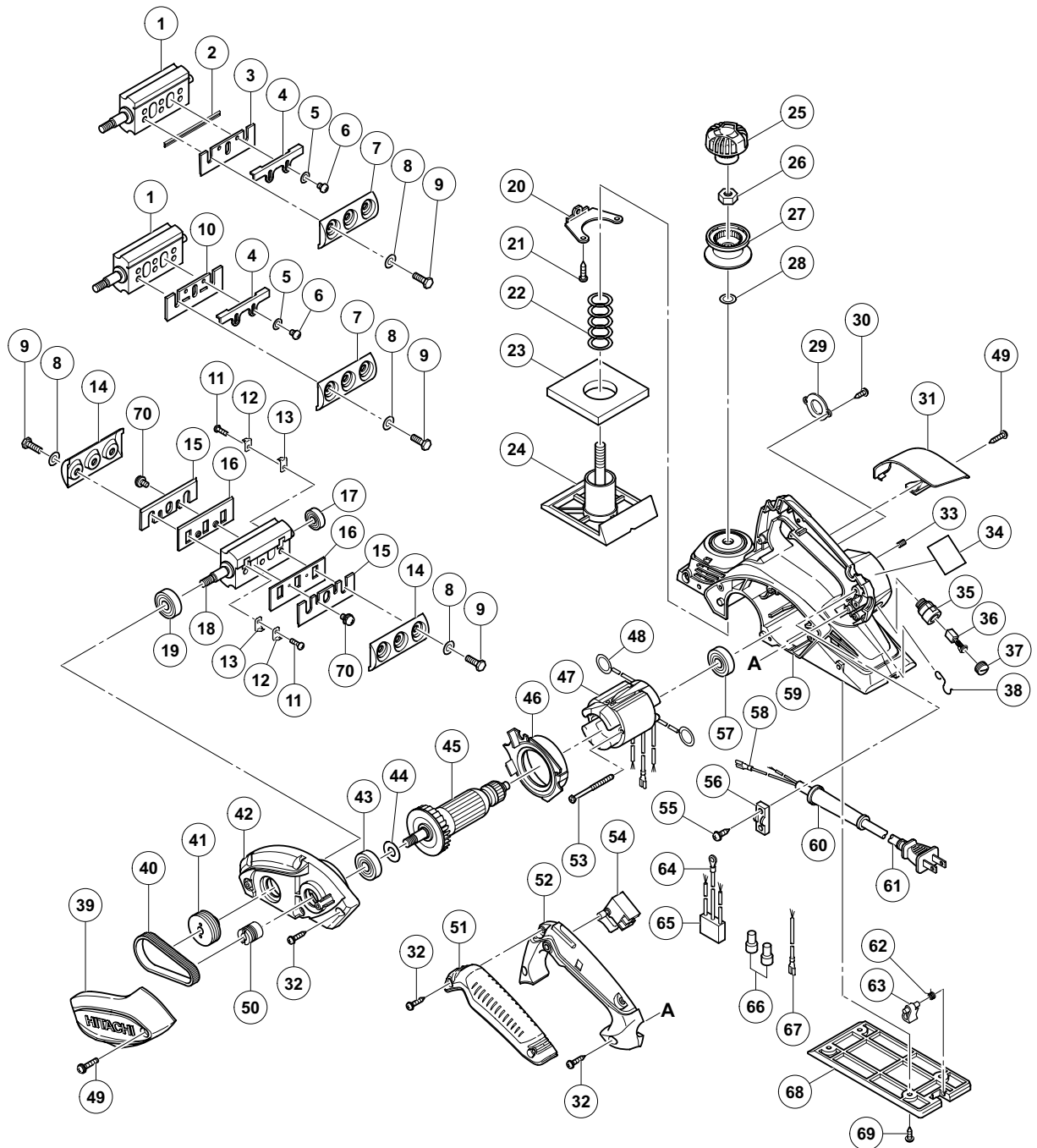


## ELECTRIC TOOL PARTS LIST

■ **PLANER**  
**Model P 20SF**

**2012·10·12**  
**(E2)**



**PARTS**

ITEM NO.	CODE NO.	DESCRIPTION	NO. USED	REMARKS
* 1	334-480	CUTTER BLOCK ASS'Y (W/B.B)	1	INCLUD. 17, 19 EXCEPT FOR IND
* 2	879-418	PLANER BLADES (1 PAIR)	2	FOR DOUBLE EDGE BLADE TYPE
* 3	334-478	SET PLATE (B) (1 PAIR)	2	FOR DOUBLE EDGE BLADE TYPE
* 4	314-754	SET PLATE (A)	2	EXCEPT FOR IND
* 5	949-423	WASHER M4 (10 PCS.)	4	EXCEPT FOR IND
* 6	949-213	MACHINE SCREW M4 X 5 (10 PCS.)	4	EXCEPT FOR IND
* 7	316-398	BLADE HOLDER (1 PAIR)	2	EXCEPT FOR IND
8	334-706	WASHER 65MN T0.5	6	
9	334-707	BOLT M6	6	
* 10	314-746	PLANER BLADES 82 MM (1 PAIR)	2	EXCEPT FOR DOUBLE EDGE BLADE TYPE
* 11	949-216	MACHINE SCREW M4 X 10 (10 PCS.)	4	EXCEPT FOR DOUBLE EDGE BLADE TYPE FOR IND
* 12	958-731Z	HOLDER SPRING (B)	4	EXCEPT FOR DOUBLE EDGE BLADE TYPE FOR IND
* 13	958-732Z	GUARD PLATE (A)	4	EXCEPT FOR DOUBLE EDGE BLADE TYPE FOR IND
* 14	958-734Z	BLADE HOLDER (1 PAIR)	2	EXCEPT FOR DOUBLE EDGE BLADE TYPE FOR IND
* 15	958-728	PLANER BLADES 82 MM (1 PAIR)	2	EXCEPT FOR DOUBLE EDGE BLADE TYPE FOR IND
* 16	958-733Z	BACK METAL	2	EXCEPT FOR DOUBLE EDGE BLADE TYPE FOR IND
17	608-VVM	BALL BEARING 608VVC2PS2L	1	
* 18	334-481	CUTTER BLOCK ASS'Y (W/B.B)	1	INCLUD. 11-13, 17, 19 EXCEPT FOR DOUBLE EDGE BLADE TYPE FOR IND
19	620-0VV	BALL BEARING 6200VVCMP2L	1	
20	958-945	SCREW PLATE	1	
21	954-004	TAPPING SCREW D4 X 16	1	
22	958-709	SPRING	1	
23	958-708	RUBBER PACKING	1	
24	334-739	FRONT BASE	1	
25	334-494	KNOB (A)	1	
26	334-497	LOCK NUT M10	1	
* 27	334-488	KNOB (B)	1	
* 27	334-489	KNOB (B)	1	FOR USA, CAN
28	301-659	WASHER (B)	1	
29	334-492	BEARING COVER	1	
30	309-470	TAPPING SCREW (W/FLANGE) D4 X 12 (BLACK)	2	
31	334-501	TIP COVER	1	
32	301-653	TAPPING SCREW (W/FLANGE) D4 X 20 (BLACK)	8	
33	938-477	HEX. SOCKET SET SCREW M5 X 8	2	
34		NAME PLATE	1	
35	957-571	BRUSH HOLDER	2	
36	999-021	CARBON BRUSH (1 PAIR)	2	
37	931-266	BRUSH CAP	2	
* 38	334-736	CORD HOLDER	1	
* 38	334-498	CORD HOLDER	1	FOR TPE, UAE, USA, CAN, MEX, BRA, PAN (120 V), NOR, SWE, DEN, FIN
39	334-487	BELT COVER	1	
40	958-718	BELT	1	
41	334-491	PULLEY (B)	1	
42	334-486	END BRACKET	1	
43	620-0VV	BALL BEARING 6200VVCMP2L	1	
44	334-713	WASHER (A)	1	
* 45	360-936U	ARMATURE ASS'Y 110 V-120 V	1	INCLUD. 43, 57
* 45	360-936H	ARMATURE 110 V	1	FOR GBR (110 V), UAE, TPE

**PARTS**

ITEM NO.	CODE NO.	DESCRIPTION	NO. USED	REMARKS	
*	45	360-936D	ARMATURE 127 V	1	
*	45	360-936E	ARMATURE 220 V-230 V	1	
*	45	360-936G	ARMATURE 220 V	1	FOR BRA (220 V), PAN (220 V), INA, CHN, HKG, THA, KOR
*	45	360-936F	ARMATURE 240 V	1	
	46	334-493	FAN GUIDE	1	
*	47	340-834C	STATOR ASS'Y 110 V	1	INCLUD. 48
*	47	340-835C	STATOR ASS'Y 110 V-120 V	1	INCLUD. 48 FOR USA, CAN, PAN (120 V)
*	47	340-835D	STATOR ASS'Y 127 V	1	INCLUD. 48
*	47	340-834E	STATOR ASS'Y 220 V-230 V	1	INCLUD. 48
*	47	340-835E	STATOR ASS'Y 220 V-230 V	1	INCLUD. 48 FOR BRA (220 V), PAN (220 V), IND, LIB, THA, INA, SIN, HKG
*	47	340-834F	STATOR ASS'Y 240 V	1	INCLUD. 48
*	47	340-835F	STATOR ASS'Y 240 V	1	INCLUD. 48 FOR MAL, UAE
	48	931-867	BRUSH TERMINAL	2	
	49	333-163	MACHINE SCREW (BLACK) M4 X 16	3	
	50	334-490	PULLEY (A)	1	
	51	334-485	GRIP COVER	1	
	52	334-484	HANDLE COVER	1	
	53	960-108	HEX. HD. TAPPING SCREW D4 X 60	2	
*	54	334-474	SWITCH	1	W/OFF LOCK TYPE
*	54	322-101	SWITCH	1	W/ON LOCK TYPE
	55	984-750	TAPPING SCREW (W/FLANGE) D4 X 16	2	
	56	937-631	CORD CLIP	1	
	57	608-VVM	BALL BEARING 608VVC2PS2L	1	
	58	331-707	FASTON	1	
*	59	334-482	HOUSING ASS'Y	1	INCLUD. 20, 21, 33, 35
*	59	334-483	HOUSING ASS'Y	1	INCLUD. 20, 21, 33, 35 FOR USA, CAN
	60	953-327	CORD ARMOR D8.8	1	
*	61	500-409Z	CORD	1	(CORD ARMOR D8.8)
*	61	500-247Z	CORD	1	(CORD ARMOR D8.8) FOR NOR, SWE, DEN, FIN
*	61	500-432Z	CORD	1	(CORD ARMOR D8.8) FOR USA, CAN, MEX, PAN (120 V)
*	61	500-231Z	CORD	1	(CORD ARMOR D8.8) FOR SIN, MAL, UAE
*	61	500-455Z	CORD	1	(CORD ARMOR D8.8) FOR THA, CAN
*	61	500-435Z	CORD	1	(CORD ARMOR D8.8) FOR GBR (230 V), HKG
*	61	500-461Z	CORD	1	(CORD ARMOR D8.8) FOR GBR (110 V)
*	61	500-439Z	CORD	1	(CORD ARMOR D8.8) FOR AUS, NZL
*	61	500-447Z	CORD	1	(CORD ARMOR D8.8) FOR SUI
*	61	500-487Z	CORD	1	(CORD ARMOR D8.8) FOR BRA
*	61	500-234Z	CORD	1	(CORD ARMOR D8.8) FOR KOR
*	61	500-470Z	CORD	1	(CORD ARMOR D8.8) FOR TPE
	62	334-500	SPRING	1	
	63	334-499	STAND	1	
*	64	961-419Z	TERMINAL	1	FOR AUS, NZL, SAF, GBR, EUROPE, NOR, SWE, DEN, FIN, AUT, TUR, SUI, RUS, CHN, TPE, KOR
*	65	994-273	NOISE SUPPRESSOR	1	FOR AUS, NZL, SAF, GBR, EUROPE, NOR, SWE, DEN, FIN, AUT, TUR, SUI, RUS, CHN, TPE, KOR
*	66	959-140	CONNECTOR 50091 (10 PCS.)	1	
*	66	959-141	CONNECTOR 50092 (10 PCS.)	2	FOR AUS, NZL, SAF, GBR, EUROPE, NOR, SWE, DEN, FIN, AUT, TUR, SUI, RUS, CHN, TPE, KOR

**PARTS**

P 20SF

ITEM NO.	CODE NO.	DESCRIPTION	NO. USED	REMARKS
* 67	331-269	INTERNAL WIRE	1	FOR AUS, NZL, SAF, GBR, EUROPE, NOR, SWE, DEN, FIN, AUT, TUR, SUI, RUS, CHN, TPE, KOR
68	334-838	REAR BASE	1	
69	307-811	TAPPING SCREW (W/FLANGE) D4 X 16 (BLACK)	4	
* 70	976-815	MACHINE SCREW (W/WASHERS) M4 X 8	4	FOR IND

**STANDARD ACCESSORIES**

ITEM NO.	CODE NO.	DESCRIPTION	NO. USED	REMARKS
* 501	334-693	SET GAUGE	1	FOR IND
502	940-543	BOX WRENCH 10 MM	1	
503	958-842Z	GUIDE	1	
504	940-650	STOPPER SCREW M5 X 14	1	
* 505	314-767	BLADE SHARPENING ASS'Y	1	EXCEPT FOR DOUBLE EDGE BLADE TYPE
* 506	334-735	CASE	1	FOR USA, CAN
* 506	334-475	CASE	1	FOR GBR, FRA, UAE, AUS, NZL
* 507	316-419	SET GAUGE	1	EXCEPT FOR IND
* 508	334-502	DUST ADAPTER	1	FOR USA, CAN
509	322-955	DUST BAG (BLACK)	1	

**OPTIONAL ACCESSORIES**

ITEM NO.	CODE NO.	DESCRIPTION	NO. USED	REMARKS
601	334-503	ELBOW	1	