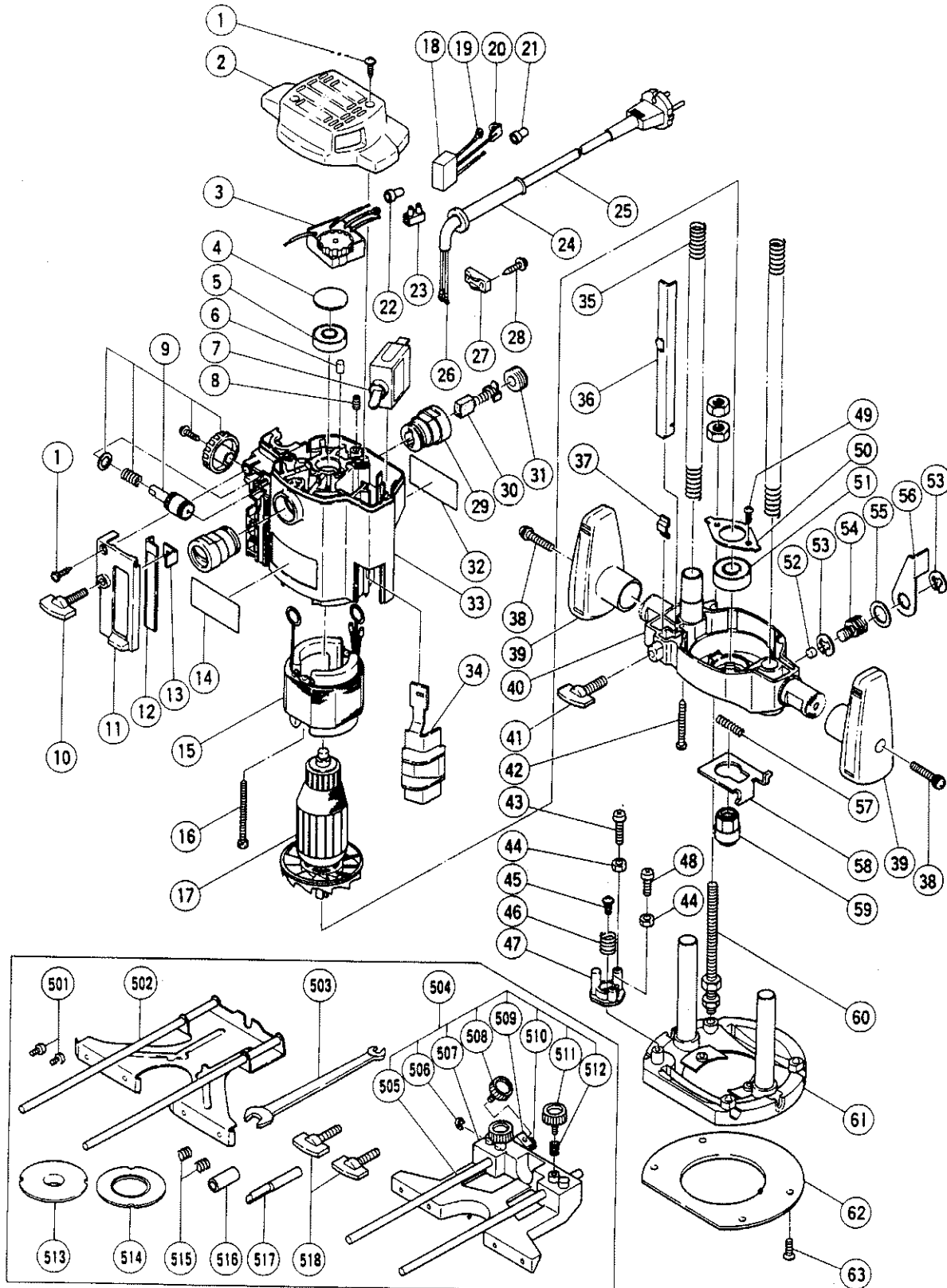


ELECTRIC TOOL PARTS LIST**ROUTER**
Model M 8V**1989·6·10**
M 8V(E1)

PARTS

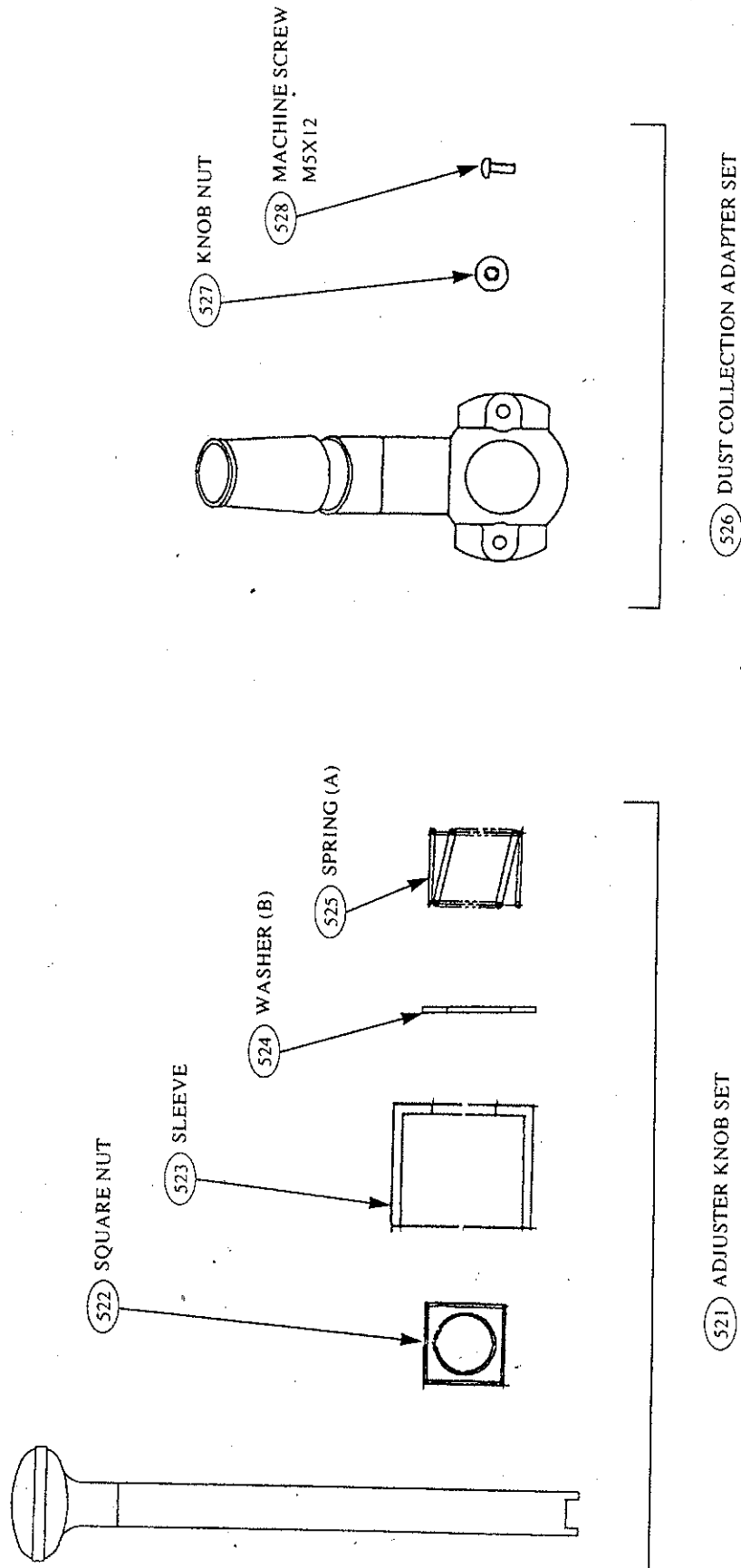
M 8V

ITEM NO.	CODE NO.	DESCRIPTION	NO. USED	REMARKS
1	302-088	TAPPING SCREW (W/FLANGE) D4X20 (BLACK)	3	
2	302-196	TOP COVER (B)	1	
* 3	302-199	CONTROLLER CIRCUIT 110V-127V	1	
* 3	302-198	CONTROLLER CIRCUIT 220V-240V	1	
4	971-835	BEARING SEAL	1	
5	608-VVM	BALL BEARING 608VVMC2EPS2L	1	
6	931-701	BEARING LOCK	1	
7	955-509	SWITCH (1P SOLDER TYPE)	1	
8	938-477	HEX. SOCKET SET SCREW M5X8	2	
9	301-798	KNOB PINION	1	
10	301-801	WING BOLT M6X27	1	
11	302-183	FRONT COVER	1	
* 12	301-824	SCALE (MM)	1	
* 12	301-825	SCALE (INCH)	1	FOR USA,CAN
13	301-800	SCALE STOPPER	1	
14		HITACHI LABEL	1	
* 15	340-193C	STATOR 110V-115V	1	
* 15	340-193D	STATOR 127V	1	
* 15	340-193E	STATOR 220V-230V	1	
* 15	340-193F	STATOR 240V	1	
* 15	340-193G	STATOR 220V	1	FOR SWE,AUS,NOR
* 15	340-193H	STATOR 240V	1	FOR GBR
* 15	340-193J	STATOR 110V	1	FOR GBR
16	960-251	HEX. HD. TAPPING SCREW D5X65	2	
* 17	360-166C	ARMATURE 110V-115V	1	
* 17	360-166D	ARMATURE 127V	1	
* 17	360-166E	ARMATURE 220V-230V	1	
* 17	360-166F	ARMATURE 240V	1	
* 17	360-166G	ARMATURE 220V	1	FOR SWE,AUS,NOR
* 17	360-166H	ARMATURE 240V	1	FOR GBR
* 17	360-166J	ARMATURE 110V	1	FOR GBR
* 18	994-273	NOISE SUPPRESSOR	1	FOR GBR,SAF,FRG,FRA,HOL,DEN,FIN,SWE,AUS,NOR,NZL,ITA,SUI
* 19	980-063	TERMINAL	1	FOR NZL,GBR,SAF,FRG,FRA,HOL,DEN,FIN,SWE,AUS,NOR,ITA,SUI
* 20	993-853	EARTH WASHER D5	1	FOR NZL,GBR,SAF,FRG,FRA,HOL,DEN,FIN,SWE,AUS,NOR,ITA,SUI
21	959-141	CONNECTOR 50092 (10 PCS.)	1	
22	959-140	CONNECTOR 50091 (10 PCS.)	1	
23	938-307Z	PILLAR TERMINAL	1	
* 24	953-327	CORD ARMOR D8.8	1	
* 24	938-051	CORD ARMOR D10.1	1	
* 25	500-201Z	CORD	1	(CORD ARMOR D10.1)
* 25	500-234Z	CORD	1	(CORD ARMOR D8.8)FOR ITA,FRG,FRA,HOL,DEN,INA
* 25	500-247Z	CORD	1	(CORD ARMOR D10.1)FOR FIN,SWE,AUS,NOR
* 25	500-237Z	CORD	1	(CORD ARMOR D8.8)FOR GBR
* 25	500-248Z	CORD	1	(CORD ARMOR D10.1)FOR SUI
* 25	500-240Z	CORD	1	(CORD ARMOR D8.8)FOR USA,CAN
* 25	500-245Z	CORD	1	(CORD ARMOR D10.1)FOR SYR
* 25	500-223Z	CORD	1	(CORD ARMOR D10.1)FOR KUW
* 251	500-423Z	CORD 220V	1	(CORD ARMOR D8.8)FOR SAU
* 251	500-226Z	CORD	1	(CORD ARMOR D8.8)FOR NZL,NGU
* 251	500-405Z	CORD	1	(CORD ARMOR D8.8)FOR AUT
* 251	500-231Z	CORD	1	(CORD ARMOR D8.8)FOR SAF
* 26	992-810	TERMINAL	1	FOR FIN,SWE,AUS,NOR,SUI

* : ALTERNATIVE PARTS

06-89

5. Illustration of Change:



MODEL NAME	(A) BEFORE CHANGE (THROUGH SEP. 1999)				INTER-CHANGE-ABILITY	(B) AFTER CHANGE (SINCE OCT. 1999)				REMARKS	PRICE (YEN)	
	ITEM NO	CODE NO	PART NAME	LVIT*SU-PCS, PPLVABILITY		ITEM NO	CODE NO	PART NAME	LVIT PCS.			
M8	521-1					521	318304	ADJUSTING KNOB SET	1		INCLUD. 522 TO 525 FOR FRG. FRA, BEL, SUI, AUS	1900
	521-2											
	522					522	318350	SQUARE NUT	1			100
	523					523	317300	SLEEVE	1			150
	524					524	956046	WASHER (B)	1			40
	525					525	971858	SPRING (A)	1			30
	526-1					526	997466	DUST COLLECTION ADAPTER SET	1		INCLUD. 527, 528 FOR FRG. FRA, BEL, ESP, ITA	1100
	526-2											
	527					527	997467	KNOB NUT	2			130
	528					528	949237	MACHINE SCREW M5X12 (10 PCS.)	2			30
M8V	521-1					521	318304	ADJUSTING KNOB SET	1		INCLUD. 522 TO 525 FOR FRG. FRA, BEL, SUI, FIN, USA, CAN, NZL	1900
	521-2											
	522					522	318350	SQUARE NUT	1			100
	523					523	317300	SLEEVE	1			150
	524					524	956046	WASHER (B)	1			40
	525					525	971858	SPRING (A)	1			30
	526-1					526	997466	DUST COLLECTION ADAPTER SET	1		INCLUD. 527, 528 FOR FRG. FRA, BEL, ITA, FIN	1100
	526-2											
	527					527	997467	KNOB NUT	2			130
	528					528	949237	MACHINE SCREW M5X12 (10 PCS.)	2			30

INTER CHANGEABILITY (A) --- (B): INTERCHANGEABLE (A) --- (B): NOT INTERCHANGEABLE
 *SUPPLY "C": CONTINUED, "D": DISCONTINUED APPLIES ONLY TO THE SUBJECT MODEL(S). THE INDICATED PART MAY STILL BE SUPPLIED FOR OTHER APPLICABLE MODELS. (SEE "INTERCHANGEABILITY LIST")