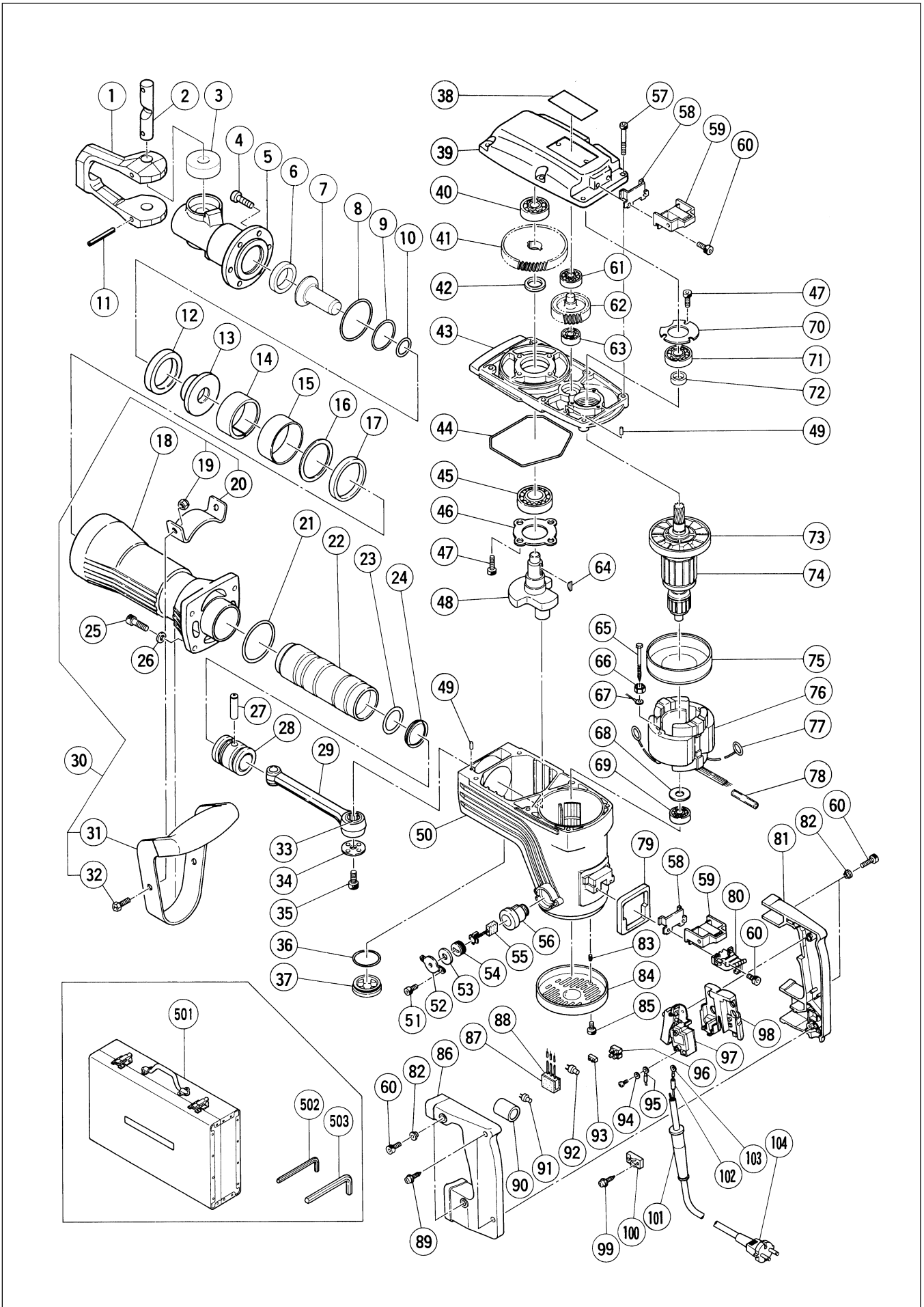


# Assembly Diagram for H 65SD



## PARTS

H 65SD

ITEM NO.	CODE NO.	DESCRIPTION	NO. USED	REMARKS
1	318-221	RETAINER	1	
2	318-222	LEVER PIN	1	
3	305-621	RETAINER DAMPER	2	
4	306-437	NYLOCK HEX. SOCKET HD. BOLT M8X30	6	
5	318-223	FRONT COVER	1	
6	996-369	DAMPER (B)	1	
7	996-367	SECOND HAMMER	1	
8	998-428	O-RING (C)	1	
9	998-427	O-RING (B)	1	
10	998-419	O-RING (E)	1	
11	994-416	ROLL PIN D6X55	2	
12	998-433	DAMPER (A)	1	
13	998-418	SHANK SLEEVE	1	
14	956-963	MOUTH	1	
15	956-962	MOUTH COVER	1	
16	956-961	MOUTH WASHER	1	
17	956-960	URETHANE RING	1	
18	306-164	CYLINDER CASE (BLACK)	1	
19	944-950	U-NUT (B) M8	2	
20	944-948	HANDLE STAY	1	
21	956-996	O-RING (1AS-60)	1	
22	956-958	STRIKER	1	
23	998-414	O-RING (A)	1	
24	998-415	OIL SEAL (A)	1	
25	306-163	NYLOCK HEX. SOCKET HD. BOLT M8X35	4	
26	949-433	BOLT WASHER M8 (10 PCS.)	4	
27	944-928	PISTON PIN	1	
28	998-413	PISTON	1	
29	998-434	CONNECTING ROD ASS'Y	1	INCLUD.33
30	306-165	SIDE HANDLE ASS'Y	1	INCLUD.19,20,31,32
31	306-166	GRIP	1	
32	949-655	HEX. SOCKET HD. BOLT M8X16 (10 PCS.)	2	
33	944-921	NEEDLE BEARING (NTN 8E-NK 18/20 RDO)	1	
34	956-955	CRANK WASHER	1	
35	996-364	SEAL LOCK HEX. SOCKET HD. BOLT M8X16	1	
36	980-717	O-RING (S-38)	1	
37	990-945	OIL CAP ASS'Y	1	INCLUD.36
38		NAME PLATE	1	
39	998-429	GEAR COVER	1	
40	630-2VV	BALL BEARING 6302VVCMP2L	1	
41	944-916	FINAL GEAR	1	
42	944-915	DISTANCE RING (B)	1	
43	998-412	INNER COVER	1	
44	957-143	SEAL RING (A)	1	
45	620-5DD	BALL BEARING 6205DDCMP2L	1	
46	956-949	BEARING COVER	1	
47	990-079	SEAL LOCK HEX. SOCKET HD. BOLT M5X16	7	
48	998-430	CRANK SHAFT	1	
49	944-918	PIN D5X15.8	2	
50	306-097	HOUSING ASS'Y	1	INCLUD.56,83
51	983-162	SEAL LOCK HEX. SOCKET HD. BOLT M4X12	4	

\* : ALTERNATIVE PARTS

8 - 99

**PARTS**

H 65SD

ITEM NO.	CODE NO.	DESCRIPTION	NO. USED	REMARKS	
52	956-972	CAP COVER	2		
53	944-960	CAP RUBBER	2		
54	940-540	BRUSH CAP	2		
55	999-086	CARBON BRUSH (AUTO STOP TYPE) (1 PAIR)	2		
56	956-984	BRUSH HOLDER	2		
57	986-940	SEAL LOCK HEX. SOCKET HD. BOLT M6X45	6		
58	980-750	GUIDE PLATE	2		
59	980-727	HANDLE RUBBER	2		
60	990-079	SEAL LOCK HEX. SOCKET HD. BOLT M5X16	8		
61	620-1VV	BALL BEARING 6201VVCMP2L	1		
62	956-948	COUNTER GEAR	1		
63	600-1VV	BALL BEARING 6001VVCMP2L	1		
64	956-850	WOODRUFF KEY 4X16	2		
65	960-251	HEX. HD. TAPPING SCREW D5X65	2		
66	956-764	SPECIAL WASHER	2		
*	67	994-190	INTERNAL WIRE	1	FOR GBR,FIN,NOR,SUI
	68	944-954	BEARING WASHER	1	
	69	620-1DD	BALL BEARING 6201DDCMP2L	1	
	70	944-911	BEARING COVER (A)	1	
	71	620-3DD	BALL BEARING 6203DDCMP2L	1	
	72	944-907	DISTANCE RING (A)	1	
	73	996-370	FAN	1	
*	74	360-286U	ARMATURE ASS'Y 115V	1	INCLUD.68,69,71,73
*	74	360-286E	ARMATURE ASS'Y 220V-230V	1	INCLUD.73
	75	306-098	FAN GUIDE	1	
*	76	340-259C	STATOR ASS'Y 110V-115V	1	INCLUD.77,78
*	76	340-259E	STATOR ASS'Y 220V-230V	1	INCLUD.77,78
*	76	340-259G	STATOR ASS'Y 115V	1	INCLUD.77,78 FOR USA
	77	945-932	BRUSH TERMINAL	2	
	78		TUBE (I.D.7XT0.25X20)	1	
	79	980-751	HANDLE PACKING	1	
	80	985-469	INTERNAL WIRE HOLDER	1	
	81	306-168	HANDLE (A)	1	
	82	991-711	DISTANCE PIECE (B)	4	
	83	938-477	HEX. SOCKET SET SCREW M5X8	2	
	84	306-099	TAIL COVER	1	
	85	991-690	SEAL LOCK HEX. SOCKET HD. BOLT M5X12	2	
	86	306-169	HANDLE (B)	1	
*	87	930-153	SUPPORT (B)	1	FOR NOISE SUPPRESSOR
*	88	994-273	NOISE SUPPRESSOR	1	FOR GBR,FIN,NOR,SUI
*	88	930-039	NOISE SUPPRESSOR	1	FOR ITA,FRG,FRA,HOL,ESP
	89	307-028	TAPPING SCREW (W/FLANGE) D4X25 (BLACK)	2	
	90	306-167	TUBE (I.D.7XT1.1X15)	1	
*	91	959-140	CONNECTOR 50091 (10 PCS.)	1	HOR GBR,NOR,SUI
*	92	959-141	CONNECTOR 50092 (10 PCS.)	1	FOR GBR,ITA,FRG,FRA,HOL,NOR,ESP,SUI
	93	938-307	PILLAR TERMINAL	1	
*	94	949-423	WASHER M4 (10 PCS.)	1	FOR GBR,ITA,FRG,FRA,HOL,FIN,NOR,ESP,SUI
*	95	981-974	INTERNAL WIRE	1	
*	95	306-681	INTERNAL WIRE	1	FOR GBR
*	96	958-308Z	PILLAR TERMINAL (A)	1	FOR FIN
	97	306-143	SWITCH (B) (1P SCREW TYPE) W/LOCK	1	

**PARTS**

H 65SD

ITEM NO.	CODE NO.	DESCRIPTION	NO. USED	REMARKS
98	990-082	SUPPORT (E)	1	
99	984-750	TAPPING SCREW (W/FLANGE) D4X16	2	
* 100	960-266	CORD CLIP	1	
* 100	981-987Z	CORD CLIP	1	FOR SUI
* 101	958-049	CORD ARMOR D8.2	1	
* 101	940-778	CORD ARMOR D10.7	1	
102	996-438	VINYL TUBE (A) (I.D.7XT0.5X50)	2	
* 103	992-810	TERMINAL	1	
* 103	930-804	TERMINAL M4.0 (10 PCS.)	1	FOR GBR (110V),USA
* 104	500-390Z	CORD	1	(CORD ARMOR D10.2)
* 104	500-246Z	CORD	1	(CORD ARMOR D10.2) FOR GBR (110V)
* 104	500-450Z	CORD	1	(CORD ARMOR D10.2) FOR GBR (230V)
* 104	500-391Z	CORD	1	(CORD ARMOR D10.2) FOR SUI
* 104	500-434Z	CORD	1	(CORD ARMOR D8.2) FOR USA

**STANDARD ACCESSORIES**

ITEM NO.	CODE NO.	DESCRIPTION	NO. USED	REMARKS
501	314-179	CASE (STEEL)	1	
502	943-277	HEX. BAR WRENCH 3MM	1	
503	872-422	HEX. BAR WRENCH 6MM	1	

**OPTIONAL ACCESSORIES**

ITEM NO.	CODE NO.	DESCRIPTION	NO. USED	REMARKS
601	996-373	COLD CHISEL 410MM (HEX. SHANK TYPE)	1	
602	985-231	COLD CHISEL 520MM (HEX. SHANK TYPE)	1	
603	996-374	CUTTER W75X410MM (HEX. SHANK TYPE)	1	
604	985-232	CUTTER W75X520MM (HEX. SHANK TYPE)	1	
605	985-233	SCOOP 546L (HEX. SHANK TYPE)	1	
606	996-372	BULL POINT 410MM (HEX. SHANK TYPE)	1	
607	980-927	GREASE FOR HAMMER.HAMMER DRILL (500G)	1	
608	308-471	GREASE FOR HAMMER.HAMMER DRILL (70G)	1	
609	981-840	GREASE (A) FOR HAMMER.HAMMER DRILL (30G)	1	

\* : ALTERNATIVE PARTS

Printed in Japan 8 - 99  
(990825 N)