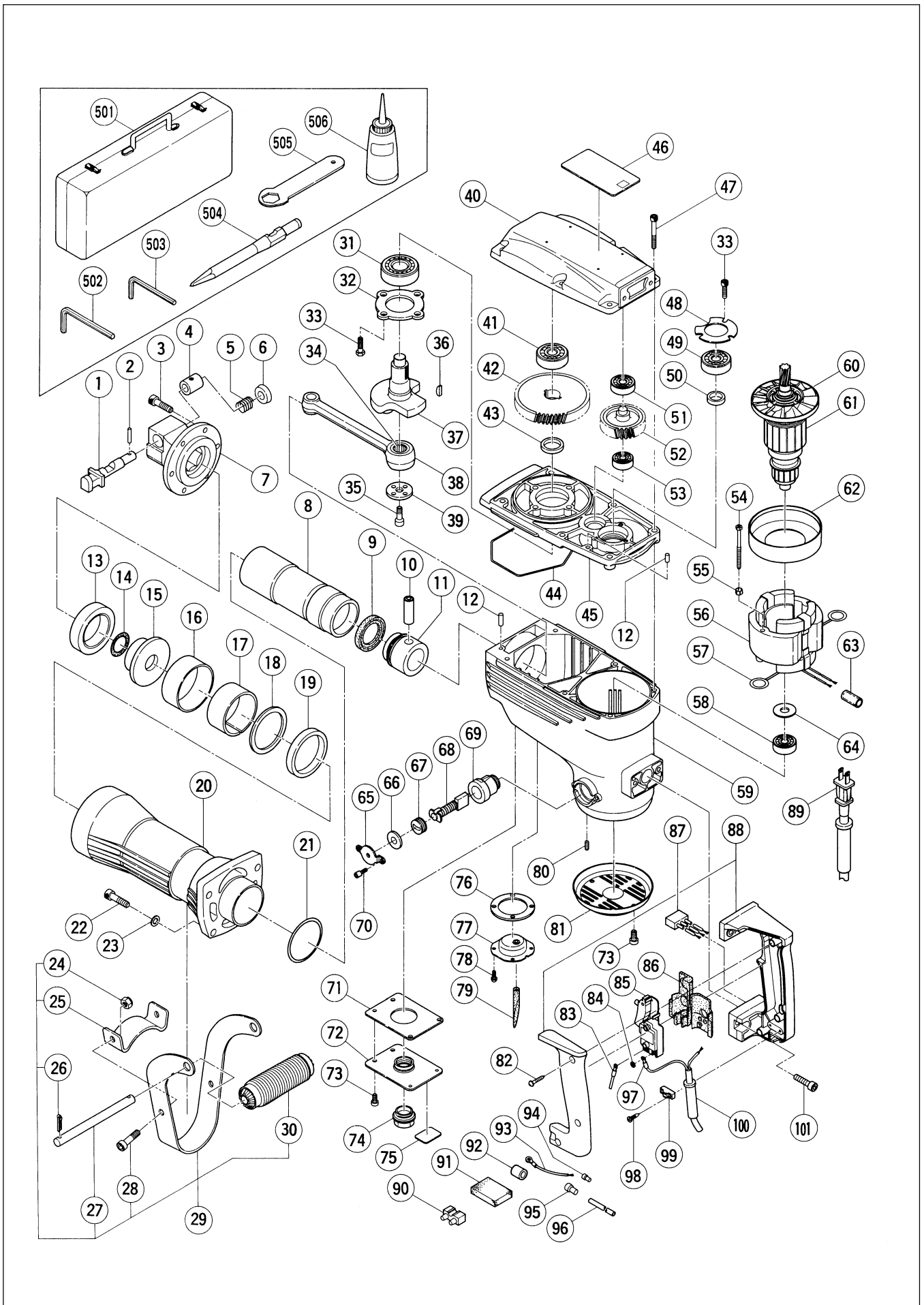


# Assembly Diagram for H 65SC



## PARTS

H 65SC

| ITEM NO. | CODE NO. | DESCRIPTION                          | NO. USED | REMARKS         |
|----------|----------|--------------------------------------|----------|-----------------|
| 1        | 998-423  | STOP LEVER                           | 1        |                 |
| 2        | 998-426  | NEEDLE ROLLER                        | 1        |                 |
| 3        | 306-437  | NYLOCK HEX. SOCKET HD. BOLT M8X30    | 6        |                 |
| 4        | 998-424  | SPRING CASE                          | 1        |                 |
| 5        | 956-975  | LEVER SPRING                         | 1        |                 |
| 6        | 998-425  | DAMPER (B)                           | 1        |                 |
| 7        | 957-152  | FRONT COVER                          | 1        |                 |
| 8        | 956-958  | STRIKER                              | 1        |                 |
| 9        | 944-927  | L-RING                               | 1        |                 |
| 10       | 944-928  | PISTON PIN                           | 1        |                 |
| 11       | 956-957  | PISTON                               | 1        |                 |
| 12       | 944-918  | PIN D5X15.8                          | 2        |                 |
| 13       | 956-965  | DAMPER                               | 1        |                 |
| 14       | 944-936  | O-RING                               | 1        |                 |
| 15       | 956-964  | SHANK SLEEVE                         | 1        |                 |
| 16       | 956-962  | MOUTH COVER                          | 1        |                 |
| 17       | 956-963  | MOUTH                                | 1        |                 |
| 18       | 956-961  | MOUTH WASHER                         | 1        |                 |
| 19       | 956-960  | URETHANE RING                        | 1        |                 |
| 20       | 306-164  | CYLINDER CASE (BLACK)                | 1        |                 |
| 21       | 956-996  | O-RING (1AS-60)                      | 1        |                 |
| 22       | 306-163  | NYLOCK HEX. SOCKET HD. BOLT M8X35    | 4        |                 |
| 23       | 949-433  | BOLT WASHER M8 (10 PCS.)             | 4        |                 |
| 24       | 944-950  | U-NUT (B) M8                         | 2        |                 |
| 25       | 944-948  | HANDLE STAY                          | 1        |                 |
| 26       | 949-895  | SPLIT PIN D4X25 (10 PCS.)            | 2        |                 |
| 27       | 944-952  | HANDLE SHAFT                         | 1        |                 |
| 28       | 949-655  | HEX. SOCKET HD. BOLT M8X16 (10 PCS.) | 2        |                 |
| 29       | 956-852  | SIDE HANDLE ASS'Y                    | 1        | INCLUD.24-28,30 |
| 30       | 944-951  | GRIP                                 | 1        |                 |
| 31       | 620-5DD  | BALL BEARING 6205DDCMPS2L            | 1        |                 |
| 32       | 956-949  | BEARING COVER                        | 1        |                 |
| 33       | 990-079  | SEAL LOCK HEX. SOCKET HD. BOLT M5X16 | 7        |                 |
| 34       | 944-921  | NEEDLE BEARING (NTN 8E-NK 18/20 RDO) | 1        |                 |
| 35       | 996-364  | SEAL LOCK HEX. SOCKET HD. BOLT M8X16 | 1        |                 |
| 36       | 956-850  | WOODRUFF KEY 4X16                    | 2        |                 |
| 37       | 957-142  | CRANK SHAFT                          | 1        |                 |
| 38       | 998-434  | CONNECTING ROD ASS'Y                 | 1        | INCLUD.34       |
| 39       | 956-955  | CRANK WASHER                         | 1        |                 |
| 40       | 318-207  | GEAR COVER                           | 1        |                 |
| 41       | 630-2VV  | BALL BEARING 6302VVCMPMS2L           | 1        |                 |
| 42       | 944-916  | FINAL GEAR                           | 1        |                 |
| 43       | 944-915  | DISTANCE RING (B)                    | 1        |                 |
| 44       | 957-143  | SEAL RING (A)                        | 1        |                 |
| 45       | 998-412  | INNER COVER                          | 1        |                 |
| 46       |          | NAME PLATE                           | 1        |                 |
| 47       | 986-940  | SEAL LOCK HEX. SOCKET HD. BOLT M6X45 | 6        |                 |
| 48       | 944-911  | BEARING COVER (A)                    | 1        |                 |
| 49       | 620-3DD  | BALL BEARING 6203DDCMPS2L            | 1        |                 |
| 50       | 944-907  | DISTANCE RING (A)                    | 1        |                 |
| 51       | 620-1VV  | BALL BEARING 6201VVCMPMS2L           | 1        |                 |

## PARTS

H 65SC

| ITEM NO. | CODE NO. | DESCRIPTION                            | NO. USED | REMARKS                    |
|----------|----------|--|----------|----------------------------|
| 52       | 956-948  | COUNTER GEAR                           | 1        |                            |
| 53       | 600-1VV  | BALL BEARING 6001VVCMP2L               | 1        |                            |
| 54       | 960-251  | HEX. HD. TAPPING SCREW D5X65           | 2        |                            |
| 55       | 956-764  | SPECIAL WASHER                         | 2        |                            |
| * 56     | 340-259G | STATOR ASS'Y 115V                      | 1        | INCLUD.57,63 FOR USA       |
| * 56     | 340-259E | STATOR ASS'Y 220V-230V                 | 1        | INCLUD.57,63               |
| 57       | 945-932  | BRUSH TERMINAL                         | 2        |                            |
| 58       | 620-1DD  | BALL BEARING 6201DDCMP2L               | 1        |                            |
| 59       | 318-208  | HOUSING ASS'Y                          | 1        | INCLUD.69,80               |
| 60       | 996-370  | FAN                                    | 1        |                            |
| * 61     | 360-286U | ARMATURE ASS'Y 115V                    | 1        | INCLUD.49,58,60,64 FOR USA |
| * 61     | 360-286E | ARMATURE ASS'Y 220V-230V               | 1        | INCLUD.60                  |
| 62       | 306-098  | FAN GUIDE                              | 1        |                            |
| 63       |          | VINYL TUBE(ID7XT0.25X20)               | 1        |                            |
| 64       | 944-954  | BEARING WASHER                         | 1        |                            |
| 65       | 956-972  | CAP COVER                              | 2        |                            |
| 66       | 944-960  | CAP RUBBER                             | 2        |                            |
| 67       | 940-540  | BRUSH CAP                              | 2        |                            |
| 68       | 999-086  | CARBON BRUSH (AUTO STOP TYPE) (1 PAIR) | 2        |                            |
| 69       | 956-984  | BRUSH HOLDER                           | 2        |                            |
| 70       | 983-162  | SEAL LOCK HEX. SOCKET HD. BOLT M4X12   | 4        |                            |
| 71       | 956-971  | COVER SEAL                             | 1        |                            |
| 72       | 956-970  | COVER PLATE                            | 1        |                            |
| 73       | 991-690  | SEAL LOCK HEX. SOCKET HD. BOLT M5X12   | 6        |                            |
| 74       | 955-011  | OIL GAUGE                              | 1        |                            |
| 75       |          | CAUTION PLATE                          | 1        |                            |
| 76       | 956-969  | HOLDER SEAL                            | 1        |                            |
| 77       | 318-206  | FELT HOLDER (C) ASS'Y                  | 1        | INCLUD.79                  |
| 78       | 987-203  | SEAL LOCK SCREW (W/SP. WASHER) M4X12   | 4        |                            |
| 79       | 998-534  | OIL FELT                               | 1        |                            |
| 80       | 938-477  | HEX. SOCKET SET SCREW M5X8             | 2        |                            |
| 81       | 306-099  | TAIL COVER                             | 1        |                            |
| 82       | 307-028  | TAPPING SCREW (W/FLANGE) D4X25 (BLACK) | 3        |                            |
| * 83     | 981-974  | INTERNAL WIRE                          | 1        | EXCEPT USA                 |
| * 84     | 949-423  | WASHER M4 (10 PCS.)                    | 1        | FOR SAF,HOL                |
| 85       | 995-398  | SWITCH (A) (1P SCREW TYPE) W/LOCK      | 1        |                            |
| 86       | 312-408  | SUPPORT (F)                            | 1        |                            |
| * 87     | 994-273  | NOISE SUPPRESSOR                       | 1        | EXCEPT HKG,USA             |
| 88       | 971-168  | HANDLE AND HANDLE COVER SET            | 1        |                            |
| * 89     | 500-440Z | CORD                                   | 1        | (CORD ARMOR D8.2) FOR HKG  |
| * 89     | 500-454Z | CORD                                   | 1        | (CORD ARMOR D10.7) FOR SAF |
| * 89     | 500-390Z | CORD                                   | 1        | (CORD ARMOR D10.7) FOR HOL |
| * 89     | 500-434Z | CORD                                   | 1        | (CORD ARMOR D8.2) FOR USA  |
| * 89     | 500-457Z | CORD                                   | 1        | (CORD ARMOR D8.2) FOR CHN  |
| * 90     | 938-307  | PILLAR TERMINAL                        | 1        | FOR USA                    |
| * 91     | 963-243  | SUPPORT                                | 1        | FOR USA                    |
| 92       | 306-167  | TUBE (I.D.7XT1.1X15)                   | 1        |                            |
| * 93     | 305-798  | INTERNAL WIRE                          | 1        | EXCEPT HKG,USA             |
| * 94     | 959-140  | CONNECTOR 50091 (10 PCS.)              | 1        | EXCEPT HKG,USA             |
| * 95     | 959-141  | CONNECTOR 50092 (10 PCS.)              | 1        | EXCEPT USA                 |
| * 96     | 996-438  | VINYL TUBE (A) (I.D.7XT0.5X50)         | 2        |                            |

\* : ALTERNATIVE PARTS

8 - 99

**PARTS**

H 65SC

| ITEM NO. | CODE NO. | DESCRIPTION | NO. USED                             | REMARKS   |
|----------|----------|-------------|--------------------------------------|-----------|
| *        | 96       | 996-438     | VINYL TUBE (A) (I.D.7XT0.5X50)       | 3 FOR USA |
| *        | 97       | 980-063     | TERMINAL                             | 1         |
| *        | 97       | 992-810     | TERMINAL                             | 1 FOR HOL |
| *        | 97       | 930-804     | TERMINAL M4.0 (10 PCS.)              | 1 FOR USA |
|          | 98       | 984-750     | TAPPING SCREW (W/FLANGE) D4X16       | 2         |
|          | 99       | 960-266     | CORD CLIP                            | 1         |
| *        | 100      | 940-778     | CORD ARMOR D10.7                     | 1         |
| *        | 100      | 958-049     | CORD ARMOR D8.2                      | 1         |
|          | 101      | 987-707     | SEAL LOCK HEX. SOCKET HD. BOLT M6X25 | 4         |
|          |          |             |                                      |           |
|          |          |             |                                      |           |
|          |          |             |                                      |           |
|          |          |             |                                      |           |
|          |          |             |                                      |           |

**STANDARD ACCESSORIES**

| ITEM NO. | CODE NO. | DESCRIPTION | NO. USED                | REMARKS |
|----------|----------|-------------|-------------------------|---------|
|          | 501      | 314-170     | CASE (STEEL)            | 1       |
|          | 502      | 872-422     | HEX. BAR WRENCH 6MM     | 1       |
|          | 503      | 944-459     | HEX. BAR WRENCH 5MM     | 1       |
|          | 504      | 944-961     | BULL POINT 410MM        | 1       |
|          | 505      | 971-109     | WRENCH 23MM             | 1       |
|          | 506      | 931-848     | LUBRICANT OILER (120CC) | 1       |
|          |          |             |                         |         |
|          |          |             |                         |         |
|          |          |             |                         |         |
|          |          |             |                         |         |
|          |          |             |                         |         |
|          |          |             |                         |         |
|          |          |             |                         |         |
|          |          |             |                         |         |

**OPTIONAL ACCESSORIES**

| ITEM NO. | CODE NO. | DESCRIPTION | NO. USED                            | REMARKS |
|----------|----------|-------------|-------------------------------------|---------|
|          | 601      | 944-962     | COLD CHISEL 410MM (HEX. SHANK TYPE) | 1       |
|          | 602      | 944-964     | CUTTER W75X45L (ROUND SHANK TYPE)   | 1       |
|          | 603      | 944-966     | RAMMER SHANK (HAMMER)               | 1       |
|          | 604      | 944-965     | RAMMER 200MM                        | 1       |
|          | 605      | 957-154     | SCOOP 380L (ROUND SHANK TYPE)       | 1       |
|          |          |             |                                     |         |
|          |          |             |                                     |         |
|          |          |             |                                     |         |
|          |          |             |                                     |         |
|          |          |             |                                     |         |
|          |          |             |                                     |         |
|          |          |             |                                     |         |