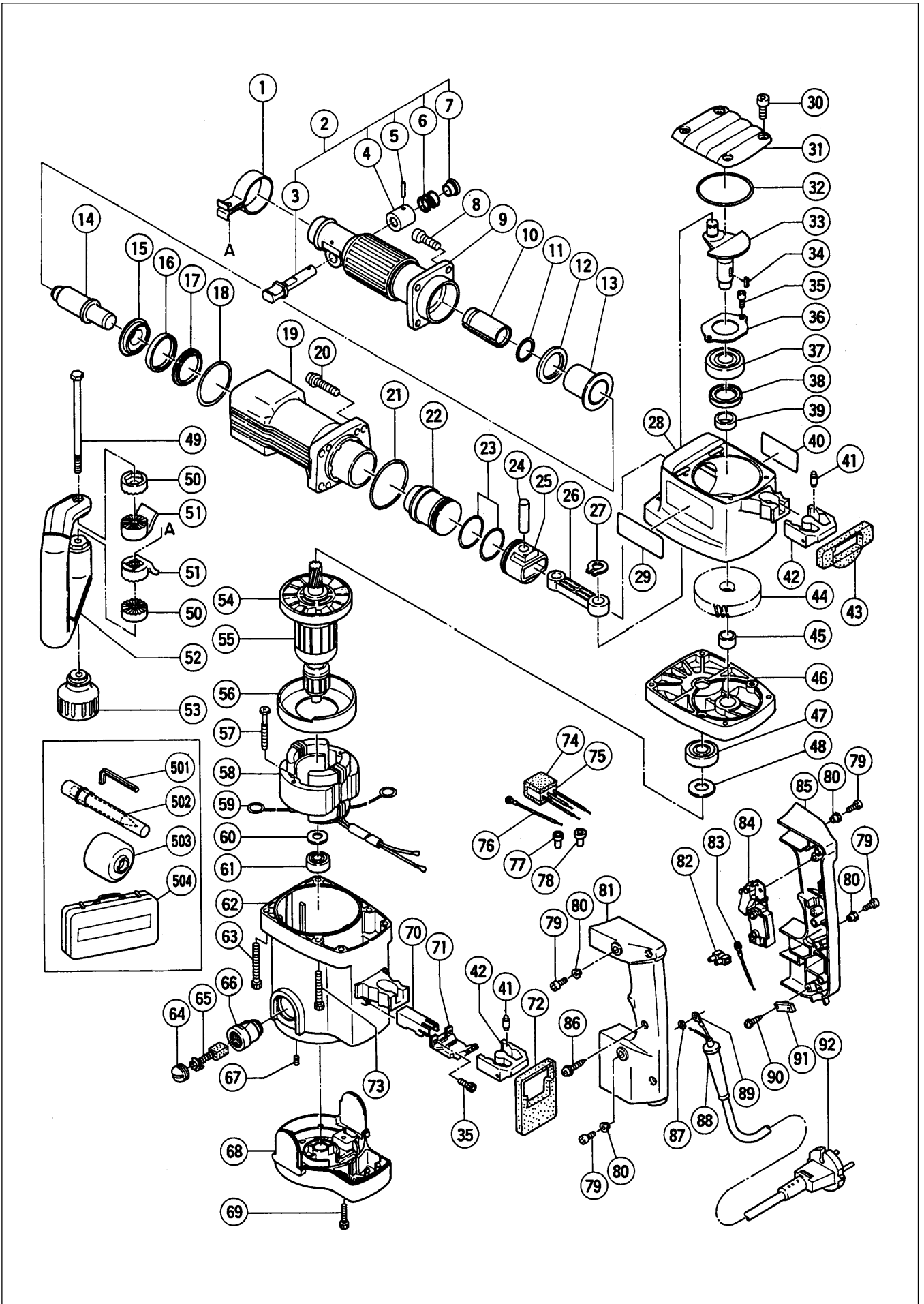


Assembly Diagram for H 60KA



PARTS

H 60KA

ITEM NO.	CODE NO.	DESCRIPTION	NO. USED	REMARKS	
1	317-104	BAND	1		
2	310-891	STOP LEVER ASS'Y	1	INCLUD.3-7	
3	302-095	STOP LEVER	1		
4	993-241	SPRING CASE	1		
5	943-364	NEEDLE ROLLER D4X20	1		
6	302-096	STOPPER SPRING	1		
7	993-243	STOPPER SLEEVE	1		
8	985-479	SEAL LOCK HEX. SOCKET HD. BOLT M8X25	4		
9	319-109	FRONT COVER ASS'Y	1	INCLUD.10	
10	319-110	SLEEVE	1		
11	872-470	O-RING (S-26)	1		
12	317-094	DAMPER (B)	1		
13	317-092	HAMMER HOLDER (B)	1		
14	319-111	SECOND HAMMER	1		
15	317-091	HAMMER HOLDER (A)	1		
16	317-093	DAMPER	1		
17	317-095	DAMPER WASHER	1		
18	317-119	O-RING (S-56)	1		
19	317-085	CYLINDER CASE	1		
20	990-083	HEX. SOCKET HD. BOLT (W/FLANGE) M8X35	4		
21	956-996	O-RING (1AS-60)	1		
22	301-510	STRIKER	1		
23	985-454	O-RING (A) (FPM810)	2		
24	301-509	PISTON PIN	1		
25	317-084	PISTON	1		
26	317-082	CONNECTING ROD	1		
27	939-543	RETAINING RING FOR D14 SHAFT (10 PCS.)	1		
28	317-083	CRANK CASE	1		
29		HITACHI LABEL	1		
30	990-079	SEAL LOCK HEX. SOCKET HD. BOLT M5X16	4		
31	317-079	CRANK COVER	1		
32	993-195	O-RING	1		
33	317-078	CRANK SHAFT	1		
34	940-533	FEATHER KEY 3X3X10	1		
35	984-509	SEAL LOCK HEX. SOCKET HD. BOLT M5X14	4		
36	985-443	BEARING COVER	1		
37	620-4DD	BALL BEARING 6204DDCMPS2L	1		
38	995-403	OIL SEAL	1		
39	995-402	DISTANCE RING (C)	1		
40		NAME PLATE	1		
41	310-124	HANDLE DAMPER	8		
42	310-123	TRANSATORY UNIT	2		
43	317-101	HANDLE PACKING (A)	1		
44	317-080	FIRST GEAR	1		
45	985-442	NEEDLE BEARING (A) (BK1512)	1		
46	317-081	GEAR COVER ASS'Y	1	INCLUD.45	
47	620-3DD	BALL BEARING 6203DDCMPS2L	1		
48	992-841	BEARING WASHER	1		
49	317-107	BOLT M8	1		
50	317-106	HANDLE HOLDER (B)	2		
51	317-105	HANDLE HOLDER (A)	2		

PARTS

H 60KA

ITEM NO.	CODE NO.	DESCRIPTION	NO. USED	REMARKS	
52	317-103	SIDE HANDLE ASS'Y	1	INCLUD.1,49-51,53	
53	317-108	GRIP	1		
54	996-370	FAN	1		
* 55	360-486C	ARMATURE ASS'Y 110V-115V	1	INCLUD.54	
* 55	360-486E	ARMATURE ASS'Y 230V	1	INCLUD.54	
* 55	360-486F	ARMATURE ASS'Y 240V	1	INCLUD.54	
56	305-610	FAN GUIDE	1		
57	953-121	HEX. HD. TAPPING SCREW D5X50	2		
* 58	340-430C	STATOR ASS'Y 110V	1	INCLUD.59	
* 58	340-430E	STATOR ASS'Y 230V	1	INCLUD.59	
* 58	340-430F	STATOR ASS'Y 240V	1	INCLUD.59	
59	945-932	BRUSH TERMINAL	2		
60	944-954	BEARING WASHER	1		
61	620-1DD	BALL BEARING 6201DDCMPS2L	1		
62	317-128	HOUSING ASS'Y	1	INCLUD.66,67	
63	301-567	SEAL LOCK HEX. SOCKET HD. BOLT M6X55	4		
64	940-540	BRUSH CAP	2		
65	999-074	CARBON BRUSH (AUTO STOP TYPE) (1 PAIR)	2		
66	956-984	BRUSH HOLDER	2		
67	938-477	HEX. SOCKET SET SCREW M5X8	2		
68	317-086	TAIL COVER	1		
69	317-245	SEAL LOCK HEX. SOCKET HD. BOLT M5X22	2		
70	317-099	SLEEVE	1		
71	310-424	INTERNAL WIRE HOLDER	1		
72	317-102	HANDLE PACKING (B)	1		
73	986-940	SEAL LOCK HEX. SOCKET HD. BOLT M6X45	2		
74	317-492	SUPPORT (B)	1		
75	994-273	NOISE SUPPRESSOR	1		
76	990-861	INTERNAL WIRE	1		
77	959-140	CONNECTOR 50091 (10 PCS.)	1		
78	959-141	CONNECTOR 50092 (10 PCS.)	1		
79	991-690	SEAL LOCK HEX. SOCKET HD. BOLT M5X12	4		
80	991-711	DISTANCE PIECE (B)	4		
81	317-097	HANDLE (B)	1		
82	938-307	PILLAR TERMINAL	1		
83	981-974	INTERNAL WIRE	1		
84	306-143	SWITCH (B) (1P SCREW TYPE) W/LOCK	1		
85	317-096	HANDLE (A)	1		
86	307-028	TAPPING SCREW (W/FLANGE) D4X25 (BLACK)	3		
87	949-423	WASHER M4 (10 PCS.)	1		
* 88	938-051	CORD ARMOR D10.1	1		
* 88	953-327	CORD ARMOR D8.8	1		
* 89	992-810	TERMINAL	1		
* 89	980-063	TERMINAL	1	FOR AUS,GBR (110V)	
90	984-750	TAPPING SCREW (W/FLANGE) D4X16	2		
* 91	960-266	CORD CLIP	1		
* 91	981-987Z	CORD CLIP	1	FOR SUI	
* 92	500-390Z	CORD	1	(CORD ARMOR D10.1)	
* 92	500-446Z	CORD	1	(CORD ARMOR D10.1) FOR GBR (230V)	
* 92	500-408Z	CORD	1	(CORD ARMOR D10.1) FOR AUS	
* 92	500-465Z	CORD	1	(CORD ARMOR D8.8) FOR GBR (110V)	

* : ALTERNATIVE PARTS

5 - 00

