

Hitachi Power Tools

LIST NO. E495

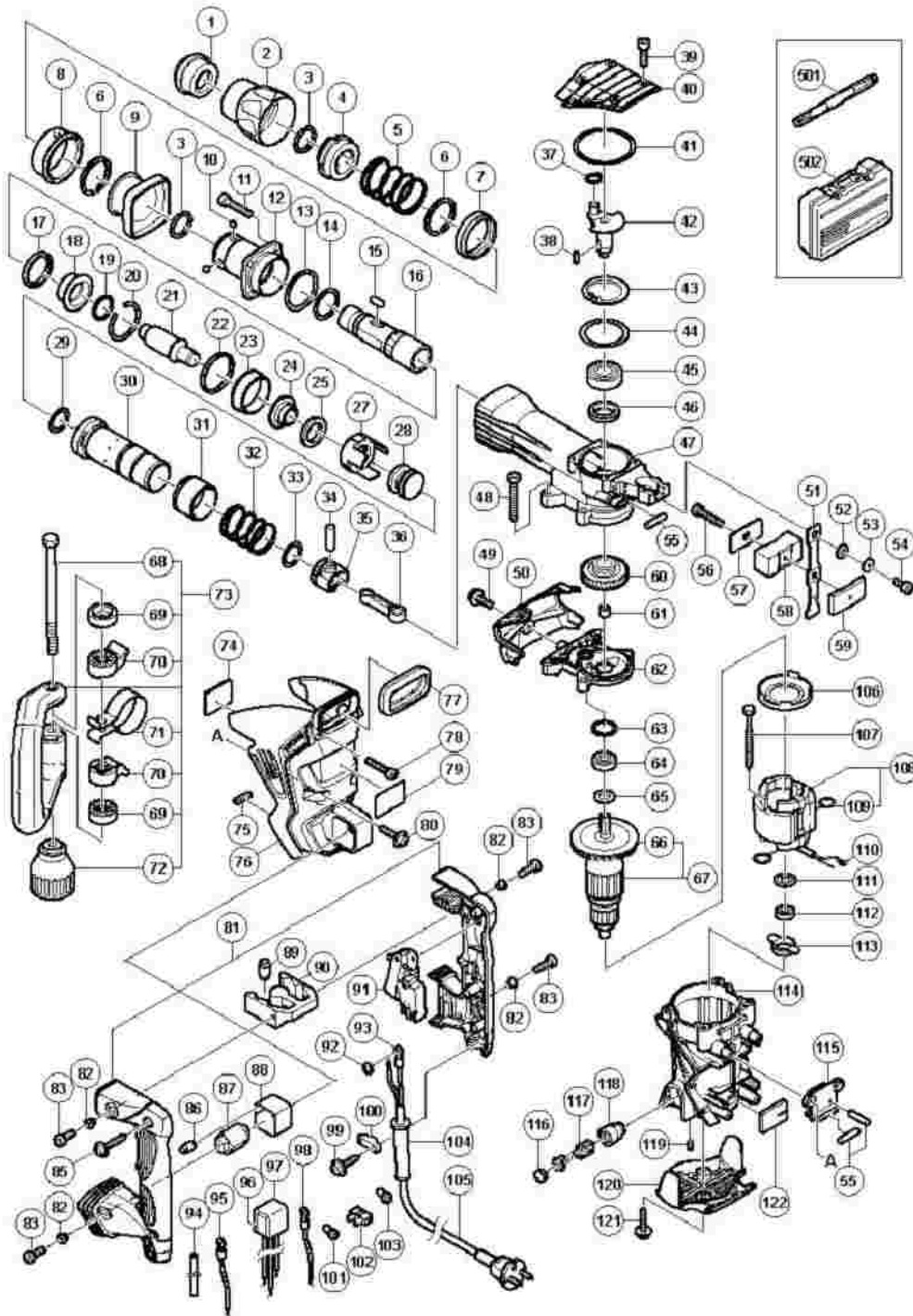
ELECTRIC TOOL PARTS LIST

■ HAMMER

2007 · 6 · 1

Model H 45MRY

(E1-1)



H45MRY

Pos. Nr.	Art. Nr.	Beschreibung	Stueck	Kommentar	Beschreibung
1	315-529	VORDERKAPPE H45MA/H60MA/MB H45MR	1		FRONT CAP
2	320-802	GRIFF (A) H45MR	1		GRIP (A)
3	320-803	RING H45MR	2		RING
4	320-804	NADELHALTER H45MR	1		NEEDLE HOLDER
5	320-806	FEDER (A) H45MR	1		SPRING (A)
6	317-088	SICHERUNGSRING D42 H60MA/MB H45MR	2		RETAINING RING D42
7	320-810	KUGELHALTER H45MR	1		BALL HOLDER
8	320-807	GRIFF (B) H45MR	1		GRIP (B)
9	320-808	GRIFF (C) H45MR	1		GRIP (C)
10	959-150	STAHLKUGEL D6 35 (10ST)	4		STEEL BALL D6.35 (10 PCS.)
11	981-942	INBUSSCHRAUBE M6X25 SELBSTSICH	4		SEAL LOCK HEX. SOCKET HD. BOLT M6X25
12	326-494	Vorderdeckel H45MRY	1		FRONT COVER
13	990-067	O-RING (1AS-50) NV50AF3/DH30PC H30PV/H45	1		O-RING (1AS-50)
14	980-879	O-RING (S-34) H90SA/VB13Y/VRV16 H45MR	1		O-RING (S-34)
15	313-421	NADELROLLE D8X20 DH40MA/MB H45MR	2		NEEDLE ROLLER D8X20
16	320-805	WERKZEUGAUFNAHME H45MR	1		RETAINER SLEEVE
17	322-528	Dampfer (A)	1		DAMPER (A)
18	326-379	Hammerhalter (A) H45MRY	1		HAMMER HOLDER (A)
19	319-572	O-RING (S-25) H30PV/H45MR	1		O-RING (S-25)
20	326-380	Ring (B) H45MRY	1		RING (B)
21	326-381	Zweithammer H45MRY	1		SECOND HAMMER
22	326-662	Dampfer (C) H45MRY	1		DAMPER (C)
23	326-495	Hulse (A) H45MRY	1		SLEEVE (A)
24	320-814	HAMMERHALTER (B) H45MR	1		HAMMER HOLDER (B)
25	320-815	DAMPFER (B) H45MR	1		DAMPER (B)
27	326-382	Hammerhalter (C) H45MRY	1		HAMMER HOLDER (C)
28	326-383	Anschlager H45MRY	1		STRIKER

29	325-297	O-Ring DH45MR	1	O-RING (I.D 27.2)
30	326-496	Zylinder H45MRY	1	CYLINDER
31	326-497	Schiebehülse H45MRY	1	SLIDE SLEEVE
32	326-498	Feder (B) H45MRY	1	SPRING (B)
33	325-297	O-Ring DH45MR	1	O-RING (I.D 27.2)
34	324-917	Kolbenpin DH45MR	1	PISTON PIN
35	326-384	Kolben H45MRY	1	PISTON
36	326-385	Pleuel H45MRY	1	CONNECTING ROD
37	939-540	SICHERUNGSRING D10 (10ST)	1	RETAINING RING FOR D10 SHAFT (10 PCS.)
38	930-511	KEIL 4X4X10 H41SA/H90SC u a H45MR	1	FEATHER KEY 4X4X10
39	990-079	INBUSSCHRAUBE M5X16 SELBSTSICH	4	SEAL LOCK HEX. SOCKET HD. BOLT M5X16
40	326-500	Kurbelgehäuse H45MRY	1	CRANK COVER
41	326-501	O-Ring H45MRY	1	O-RING
42	326-499	Kurbelwelle H45MRY	1	CRANK SHAFT
43	948-391	SICHERUNGSRING D40 INNEN H41SA/H45MA/DH4	1	RETAINING RING FOR D40 HOLE
44	996-363	O-RING (S-40) H41SA/H45MA/DH40MR	1	O-RING (S-40)
45	620-3DD	KUGELLAGER 6203 DD	1	BALL BEARING 6203DDCMPS2L
46	310-119	OLDICHTUNG H41SA/H45MA/H45MR	1	OIL SEAL
47	326-502	Zylindergehäuse H45MRY	1	CYLINDER CRANK CASE
48	986-940	INBUSSCHRAUBE M6X45 SELBSTSICH	4	SEAL LOCK HEX. SOCKET HD. BOLT M6X45
49	998-471	INBUSSCHRAUBE M5X12	1	HEX. SOCKET HD. BOLT (W/FLANGE) M5X12
50	326-503	Haube H45MRY	1	HOOD
51	326-386	Flugelfeder H45MRY	1	LEAF SPRING
52	326-375	Federdämpfer (A) DH40MRY	1	SPRING BUMPER (A)
53	326-477	Unterlegscheibe DH40MRY	1	WASHER M4.5
54	878-356	INBUSSCHRAUBE M4X10 SELBSTS	1	SEAL LOCK HEX. SOCKET HD. BOLT M4X10
55	878-418	NADELROLLE NR83A	4	NEEDLE ROLLER
56	317-245	INBUSSCHRAUBE M5X22	1	SEAL LOCK HEX. SOCKET HD. BOLT

		SELBSTSICH			M5X22
57	326-515	Gummiplatte (C) H45MRY	1		RUBBER SHEET (C)
58	326-508	Gewicht (B) H45MRY	1		WEIGHT (B)
59	326-507	Gewicht (A) H45MRY	1		WEIGHT (A)
60	320-830	ERSTES ZAHNRAD H45MR	1		FIRST GEAR
61	939-299	NADELLAGER (M661) DH40MA/MB/YB/FA/MR H45	1		NEEDLE BEARING (M661)
62	326-510	Getriebegehäuse kpl H45MRY	1	INCLUD.61	GEAR COVER ASS'Y
63	872-767	O-RING (S-32) DH25V/W6VE/W6VF	1		O-RING (S-32)
64	620-1DD	KUGELLAGER 6201 DD	1		BALL BEARING 6201DDCMPS2L
65	302-429	STAUBSCHEIBE (B) H45MR/DH40MR	1		DUST WASHER (B)
66	321-640	Ventilator DH40SR	1		FAN
67	360-571C		1	INCLUD.66	ARMATURE ASS'Y 110V
67	360-571E	ANKER 220V-230V H45MR	1	INCLUD.66	ARMATURE ASS'Y 220V-230V
68	317-107	SCHRAUBE M8 H60MA/MB/H45MR	1		BOLT M8
69	317-106	HANDGRIFFHALTER (B) H60MA/MB H45MR	2		HANDLE HOLDER (B)
70	317-105	HANDGRIFFHALTER (A) H60MA/MB H45MR	2		HANDLE HOLDER (A)
71	320-635	BAND H60MA/MB/H45MR	1		BAND
72	317-108	GRIFF H60MA/MB/H45MR	1		GRIP
73	317-103	SEITENGRIFF KOMPLETT H60MA/MB H45MR	1	INCLUD.68- 72	SIDE HANDLE ASS'Y
74	326-487	Gummiplatte (A) DH40MRY	1		RUBBER SHEET (A)
75	326-376	Federdämpfer (B) DH40MRY	1		SPRING BUMPER (B)
76	326-505	Hintere Abdeckung H45MRY	1		BACK COVER
77	326-378	Blasebalg DH40MRY	1		BELLOWS
78	306-061	Inbusschraube M5 H45MRY	2		SEAL LOCK HEX. SOCKET HD. BOLT M5X30
79			1		NAME PLATE
80	302-089	SCHNEIDSCHRAUBE D5X20 M FLANSCH	4		TAPPING SCREW (W/FLANGE) D5X20 (BLACK)
81	326-485	Handgriff A+B Set DH40MRY	1		HANDLE (A).(B) SET
82	991-711	DISTANZBUCHSE (B) DH38YB1/YF u a H45MR	4		DISTANCE PIECE (B)
					SEAL LOCK HEX.

83	991-690	INBUSSCHRAUBE M5X12 SELBSTSICH	4		SOCKET HD. BOLT M5X12
85	307-028	SCHNEIDSCHRAUBE D4X25 MIT FLANSCH (SCHWA	3		TAPPING SCREW (W/FLANGE) D4X25 (BLACK)
86	310-124	HANDGRIFFDAMPFER H41SA/H45MA u a H70SA/	4		HANDLE DAMPER
87	326-377	Handgriffwelle DH40MRY	1		HANDLE SHAFT
88	326-479	Halter DH40MRY	1		HOLDER
89	310-124	HANDGRIFFDAMPFER H41SA/H45MA u a H70SA/	4		HANDLE DAMPER
90	310-123	DAMPFERBEFESTIGUNG H41SA/H45MA ua H45MR	1		TRANSATORY UNIT
91	306-143	SCHALTER (B) H45MA/H60MA/MB u a H45MR	1		SWITCH (B) (1P SCREW TYPE) W/LOCK
92	949-423	UNTERLEGSCHIEBE M4 (10ST)	1		WASHER M4 (10 PCS.)
93	980-063	KABELSCHUH C7U/CJ65V2/H70SA/G13V G13YD/G	1	FOR CORD	TERMINAL
94	326-541	Vinylschlauch DH40MRY	1		VINYL TUBE (I.D.9.5XT0.56X85)
95	326-509	Verbinderkabel 75L H45MRY	1		INTERNAL WIRE L75
96	325-566	Kondensator CJ110MVA	1		NOISE SUPPRESSOR
97	317-492	POLSTER (B) DH25PB/H30PV/DH30PC H45MR	1		SUPPORT (B)
98	994-190	VERBINDERKABEL H65SB/SD	1		INTERNAL WIRE
99	984-750	SCHNEIDSCHRAUBE D4X16 MIT FLANSCH	2		TAPPING SCREW (W/FLANGE) D4X16
100	960-266	KABELKLEMME DIV TYPEN	1		CORD CLIP
100	981-987Z		1	FOR SUI	CORD CLIP
101	959-140	VERBINDER 50091 (10ST) DIV TYPEN	1		CONNECTOR 50091 (10 PCS.)
102	938-307	SCHRAUBKLEMME 1- REIHIG DIV TYPEN	1		PILLAR TERMINAL
103	959-141	VERBINDER 50092 (10ST) DIV TYPEN	1		CONNECTOR 50092 (10 PCS.)
104	953-327	KABELKNICKSCHUTZ D8 8 DIV TYPEN	1		CORD ARMOR D8.8
105	500-390Z		1	(CORD ARMOR D8.8)	CORD

105	500-454Z		1	(CORD ARMOR D8.8) FOR GBR (110V)	CORD
105	500-446Z		1	(CORD ARMOR D8.8) FOR GBR (230V)	CORD
105	500-391Z		1	(CORD ARMOR D8.8) FOR SUI	CORD
105	500-434Z		1	"(CORD ARMOR D8.8) FOR USA,CAN"	CORD
106	321-320	Ventilatorfuehrung (DH40MR)	1		FAN GUIDE
107	953-174	SCHNEIDSCHRAUBE D5X55	2		HEX. HD. TAPPING SCREW D5X55
108	340-681C		1	INCLUD.109	STATOR ASS'Y 110V
108	340-681E	Stator kpl 220-230V H45MRY	1	INCLUD.109	STATOR ASS'Y 220V-230V
108	340-681G		1	INCLUD.109	STATOR ASS'Y 120V
109	930-703	KOEHLENHALTERKLEMME DH28Y u a H30PV/VB16	2		BRUSH TERMINAL
110	930-804	KABELSCHUH M4 0 (10ST)	1		TERMINAL M4.0 (10 PCS.)
111	982-631	UNTERLEGSCHIEBE (A) CR17Y/DH20PB H30PV/D	1		WASHER (A)
112	608-VVM	KUGELLAGER 608 VVM	1		BALL BEARING 608VVC2PS2L
113	326-484	Lagerhalter DH40MRY	1		BEARING HOLDER
114	326-481	Gehaese kpl DH40MRY	1		HOUSING ASS'Y
115	326-506	Federfus H45MRY	1		SPRING BASE
116	935-829	BURSTENKAPPE H41SA/H45MA/VB13Y VB16Y/H45	2		BRUSH CAP
117	999-073	KOEHLEBURSTEN SELBSTABSCH (PAAR)	2		CARBON BRUSH (AUTO STOP TYPE) (1 PAIR)
118	971-001	KOEHLENHALTER H41SA/H45MA/VB13Y VB16Y/H45	2		BRUSH HOLDER
119	938-477	INBUSSTIFTSCHRAUBE M5X8	2		HEX. SOCKET SET SCREW M5X8
120	326-504	Enddeckel H45MRY	1		TAIL COVER
					TAPPING SCREW

121	302-089	SCHNEIDSCHRAUBE D5X20 M FLANSCH	2	(W/FLANGE) D5X20 (BLACK)
122	326-488	Abdeckung DH40MRY	1	COVER (A)
501	313-471		1	BULL POINT (SDS MAX) 280L
502	326-511	Transportkoffer H45MRY	1	CASE (PLASTIC)
601	981-840	HAMMERFETT (A) 30G	1	GREASE (A) FOR HAMMER.HAMMER DRILL (30G)
602	308-471	HAMMERFETT 70G TUBE	1	GREASE FOR HAMMER.HAMMER DRILL (70G)
603	980-927	HAMMERFETT 500G	1	GREASE FOR HAMMER.HAMMER DRILL (500G)
604	313-472		1	BULL POINT (SDS MAX) 400L
605	313-473		1	COLD CHISEL (SDS MAX) 280MM
606	313-474		1	COLD CHISEL (SDS MAX) 400MM
607	313-475		1	CUTTER (SDS MAX) W50X400L
608	313-476		1	SCOOP (SDS MAX) 400L
609	313-478		1	RAMMER (SDS MAX) 150MM X 150MM
610	313-477		1	BUSHING TOOL (SDS MAX)
611	313-479		1	"SHANK (SDS MAX) FOR RAMMER,BUSHING TOOL"