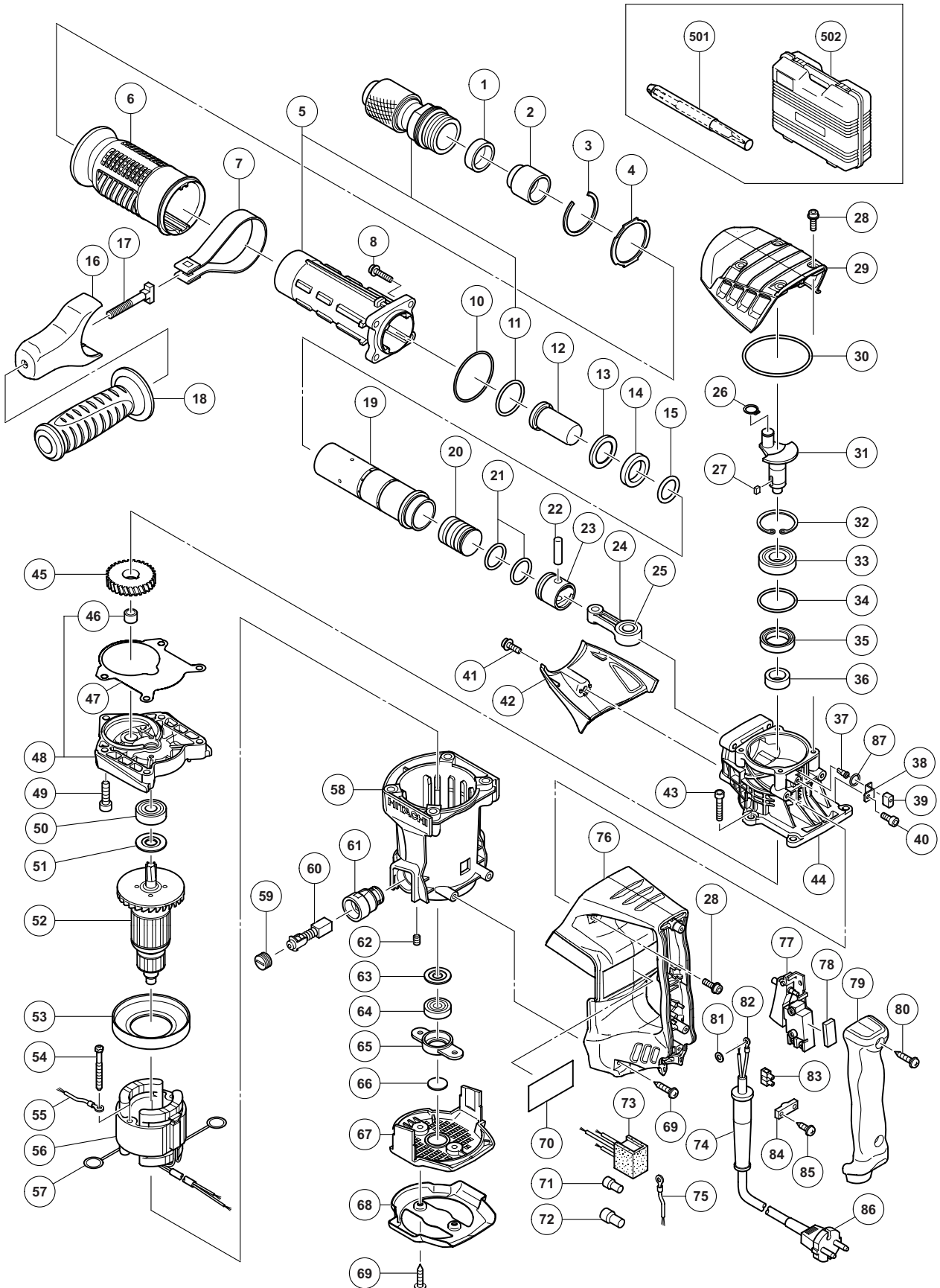


ELECTRIC TOOL PARTS LIST

■ HAMMER Model H 41SD

2012·11·16

(E2)



PARTS

H 41SD

ITEM NO.	CODE NO.	DESCRIPTION	NO. USED	REMARKS
1	334-946	RETAINER DAMPER	1	
2	334-950	HAMMER HOLDER	1	
3	333-856	RETAINING RING D45	1	
4	333-855	FRONT WASHER	1	
5	334-945	CYLINDER CASE ASS'Y	1	INCLUD. 11
6	333-854	CYLINDER CASE COVER	1	
7	333-261	BAND	1	
8	991-712	HEX. SOCKET HD. BOLT (W/FLANGE) M6 X 25	4	
10	980-715	O-RING (S-48)	1	
11	883-771	O-RING	1	
12	334-947	SECOND HAMMER	1	
13	333-852	DAMPER WASHER	1	
14	333-851	DAMPER	1	
15	983-234	O-RING (A)	1	
16	333-262	MOUNT	1	
17	333-227	HANDLE BOLT	1	
18	330-209	SIDE HANDLE	1	
19	333-850	CYLINDER	1	
20	334-944	STRIKER	1	
21	986-104	O-RING	2	
22	980-708	PISTON PIN	1	
23	333-848	PISTON	1	
24	333-847	CONNECTING ROD	1	INCLUD. 25
25	335-303	NEEDLE BEARING	1	
26	939-540	RETAINING RING FOR D10 SHAFT (10 PCS.)	1	
27	980-809	FEATHER KEY 4 X 4 X 8	1	
28	994-192	HEX. SOCKET HD. BOLT (W/FLANGE) M5 X 16	6	
29	333-858	CRANK COVER	1	
30	878-867	O-RING (JASO2060)	1	
31	333-846	CRANK SHAFT	1	
32	948-391	RETAINING RING FOR D40 HOLE	1	
33	620-3DD	BALL BEARING 6203DDCMPS2L	1	
34	996-363	O-RING (S-40)	1	
35	310-119	OIL SEAL	1	
36	333-245	DISTANCE RING	1	
37	995-396	VALVE	1	
38	335-301	VALVE COVER	1	
39	334-217	FELT	1	
40	877-838	SEAL LOCK HEX. SOCKET HD. BOLT M4 X 8	1	
41	998-471	HEX. SOCKET HD. BOLT (W/FLANGE) M5 X 12	1	
42	333-857	HOOD	1	
43	324-056	SEAL LOCK HEX. SOCKET HD. BOLT M6 X 35	4	
44	333-845	CRANK CASE	1	
45	333-246	FIRST GEAR	1	
46	939-299	NEEDLE BEARING (M661)	1	
47	334-949	SEAL PACKING (B)	1	
48	334-943	GEAR COVER ASS'Y	1	INCLUD. 46
49	992-803	SEAL LOCK HEX. SOCKET HD. BOLT M6 X 20	1	
50	620-1DD	BALL BEARING 6201DDCMPS2L	1	
51	302-429	DUST WASHER (B)	1	

PARTS

H 41SD

ITEM NO.	CODE NO.	DESCRIPTION	NO. USED	REMARKS
* 52	360-946C	ARMATURE 110 V	1	
* 52	360-946E	ARMATURE 220 V-230 V	1	
* 52	360-946F	ARMATURE 240 V	1	
53	331-252	FAN GUIDE	1	
54	953-121	HEX. HD. TAPPING SCREW D5 X 50	2	
* 55	990-861	INTERNAL WIRE	1	FOR EUROPE, AUS, NZL, SAF, TPE, KOR
* 56	340-788B	STATOR ASS'Y 110 V	1	INCLUD. 57
* 56	340-788A	STATOR ASS'Y 110 V	1	INCLUD. 57 FOR TPE
* 56	340-788H	STATOR ASS'Y 220 V-240 V	1	INCLUD. 57
* 56	340-788G	STATOR ASS'Y 220 V-240 V	1	INCLUD. 57 FOR HKG, IND, INA, THA, SIN
* 56	340-788K	STATOR ASS'Y 240 V	1	INCLUD. 57 FOR MAL
57	930-703	BRUSH TERMINAL	2	
58	333-267	HOUSING ASS'Y	1	INCLUD. 61, 62
59	945-161	BRUSH CAP	2	
60	999-043	CARBON BRUSH (1 PAIR)	2	
61	958-900	BRUSH HOLDER	2	
62	938-477	HEX. SOCKET SET SCREW M5 X 8	2	
63	982-631	WASHER (A)	1	
64	608-VVM	BALL BEARING 608VVC2PS2L	1	
65	331-254	BEARING HOLDER	1	
66	333-263	DUST SEAL	1	
67	333-264	TAIL COVER	1	
68	333-860	PLATE	1	
69	302-089	TAPPING SCREW (W/FLANGE) D5 X 20 (BLACK)	4	
70		NAME PLATE	1	
* 71	959-140	CONNECTOR 50091 (10 PCS.)	1	FOR EUROPE, AUS, NZL, SAF, TPE, KOR
72	959-141	CONNECTOR 50092 (10 PCS.)	1	
* 73	331-203	NOISE SUPPRESSOR	1	FOR EUROPE, AUS, NZL, SAF, TPE, KOR
* 74	958-049	CORD ARMOR D8.2	1	
* 74	940-778	CORD ARMOR D10.7	1	
* 75	981-974	INTERNAL WIRE	1	FOR EUROPE, AUS, NZL, SAF, TPE, KOR
76	333-861	HANDLE	1	
77	306-143	SWITCH (B) (1P SCREW TYPE) W/LOCK	1	
78	335-302	RUBBER SHEET	1	
79	331-205	HANDLE COVER	1	
80	307-028	TAPPING SCREW (W/FLANGE) D4 X 25 (BLACK)	2	
* 81	949-423	WASHER M4 (10 PCS.)	1	FOR EUROPE, SAF, KOR
82	980-063	TERMINAL	1	
* 83	938-307	PILLAR TERMINAL	1	FOR EUROPE, AUS, NZL, SAF, TPE, KOR
84	960-266	CORD CLIP	1	
85	984-750	TAPPING SCREW (W/FLANGE) D4 X 16	2	
* 86	500-390Z	CORD	1	(CORD ARMOR D8.2)
* 86	500-477Z	CORD	1	(CORD ARMOR D10.7) FOR VEN, TPE
* 86	500-408Z	CORD	1	(CORD ARMOR D8.2) FOR AUS, NZL
* 86	500-235Z	CORD	1	(CORD ARMOR D8.2) FOR IND, INA
* 86	500-440Z	CORD	1	(CORD ARMOR D8.2) FOR HKG
* 86	500-239Z	CORD	1	(CORD ARMOR D10.7) FOR THA
* 86	500-406Z	CORD	1	(CORD ARMOR D8.2) FOR SIN, MAL
* 86	500-475Z	CORD	1	(CORD ARMOR D8.2) FOR KOR
87	987-105	O-RING (S-10)	1	

