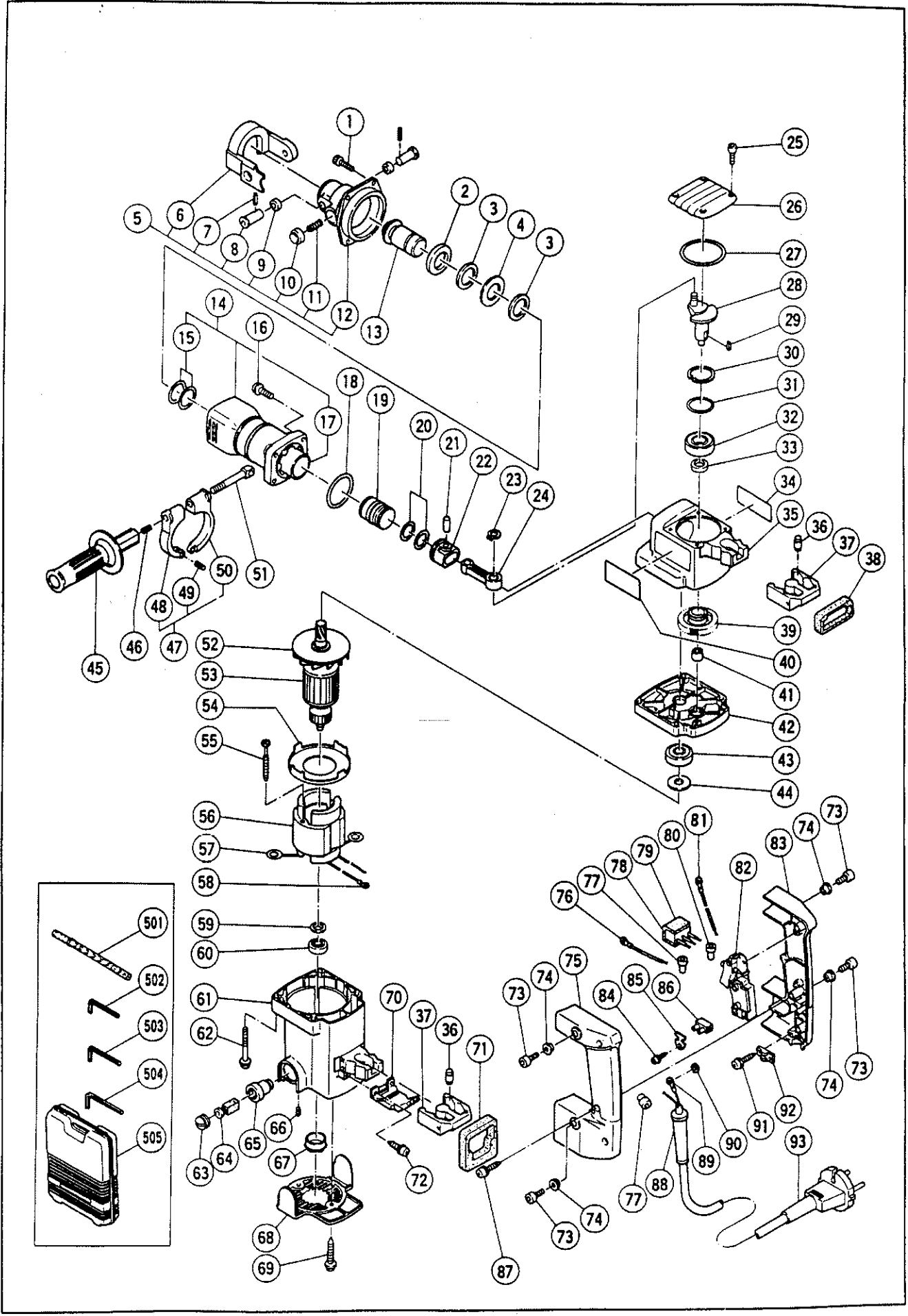


Assembly Diagram for H41SA



PARTS

H 41SA

ITEM NO.	CODE NO.	DESCRIPTION	NO. USED	REMARKS
1	993-040	NYLOCK HIGH TENSION BOLT M7X25	4	
2	991-895	DAMPER WASHER	1	
3	983-235	DAMPER	2	
4	983-236	WASHER	1	
5	993-042	FRONT COVER ASS'Y	1	INCLUD.6 - 12
6	990-131	RETAINER	1	
7	991-897	ROLL PIN D4X20	2	
8	990-135	RETAINER PIN	2	
9	990-134	DAMPER (B)	2	
10	990-133	PUSHING BUTTON	1	
11	990-132	SET SPRING	1	
12	991-893	FRONT COVER	1	
13	991-708	SECOND HAMMER	1	
14	310-109	CYLINDER CASE ASS'Y	1	INCLUD.15,17
15	983-234	O - RING (A)	2	
16	993-041	NYLOCK BOLT (W/FLANGE) M6X25	4	
17	310-110	CYLINDER	1	
18	980-715	O - RING (S - 48)	1	
19	310-112	STRIKER	1	
20	988-104	O - RING	2	
21	980-708	PISTON PIN	1	
22	310-113	PISTON	1	
23	939-540	RETAINING RING FOR D10 SHAFT (10 PCS.)	1	
24	310-114	CONNECTING ROD	1	
25	983-162	SEAL LOCK HEX. SOCKET HD. BOLT M4X12	4	
26	310-115	CRANK COVER	1	
27	980-744	O - RING (S - 55)	1	
28	310-116	CRANK SHAFT	1	
29	930-511	FEATHER KEY 4X4X10	1	
30	948-391	RETAINING RING FOR D40 HOLE	1	
31	996-363	O - RING (S - 40)	1	
32	620-3DD	BALL BEARING 6203DDUCMAV2S	1	
33	310-118	OIL SEAL	1	
34		NAME PLATE	1	
35	310-117	CRANK CASE	1	
36	310-124	HANDLE DANPER	8	
37	310-123	TRANSATORY UNIT	2	
38	310-126	HANDLE PACKING (A)	1	
39	310-120	FIRST GEAR	1	
40		HITACHI LABEL	1	
41	939-299	NEEDLE BEARING (M661)	1	
42	310-129	GEAR COVER ASS'Y	1	INCLUD.41
43	620-1VV	BALL BEARING 6201VVCMP2S	1	
44	971-738	WASHER (B)	1	
45	981-870	SIDE HANDLE	1	
46	672-612	SPRING	1	
47	980-857	HANDLE HOLDER ASS'Y	1	INCLUD.48 - 50
48	980-859	HANDLE HOLDER (B)	1	
49	949-875	ROLL PIN D6X22 (10 PCS.)	1	
50	980-858	HANDLE HOLDER (A)	1	
51	971-785	HANDLE BOLT	1	

*: ALTERNATIVE PARTS

PARTS

H 41SA

ITEM NO.	CODE NO.	DESCRIPTION	NO. USED	REMARKS
52	310-130	FAN	1	
* 53	380-380C	ARMATURE 110V	1	INCLUD.52
* 53	380-380E	ARMATURE 220V - 230V	1	INCLUD.52
* 53	380-380F	ARMATURE 240V	1	INCLUD.52 FOR KUW
54	980-931	FAN GUIDE	1	
55	953-121	HEX. HD. TAPPING SCREW D5X50	2	
* 56	340-317C	STATOR ASS'Y 110V	1	INCLUD.57,58
* 56	340-317E	STATOR ASS'Y 220V - 230V	1	INCLUD.57,58
* 56	340-326J	STATOR ASS'Y (B) 110V	1	INCLUD.57 FOR GBR (110V)
* 56	340-317G	STATOR ASS'Y 220V	1	INCLUD.57 FOR KOR
* 56	340-326K	STATOR ASS'Y (B) 220V - 230V	1	INCLUD.57 FOR GBR (230V),ITA,FRG,FRA, HOL,DEN,FIN,SWE,AUT,NOR,ESP,SUI
* 56	340-317F	STATOR ASS'Y 240V	1	INCLUD.57,58 FOR KUW
57	930-703	BRUSH TERMINAL	2	
58	930-804	TERMINAL M4.0 (10 PCS.)	1	FOR STATOR
59	982-631	WASHER (A)	1	
60	608-VVM	BALL BEARING 608VVMC2EPS2L	1	
61	310-146	HOUSING ASS'Y	1	INCLUD.85,86
62	980-951	HEX. SOCKET HD. BOLT (W/FLANGE) M5X45	4	
63	935-829	BRUSH CAP	2	
* 64	999-043	CARBON BRUSH (1 PAIR)	2	
* 64	999-073	CARBON BRUSH (AUTO STOP TYPE) (1 PAIR)	2	FOR SIN,GBR,ITA,FRG,FRA,HOL,DEN,FIN,SWE AUT,NOR,ESP,SUI,AUS
65	971-001	BRUSH HOLDER	2	
66	938-477	HEX. SOCKET SET SCREW M5X8	2	
67	310-111	BEARING BUSHING (B)	1	
68	310-118	TAIL COVER	1	
69	307-811	TAPPING SCREW (W/FLANGE) D4X16 (BLACK)	2	
* 70	980-754	INTERNAL WIRE HOLDER	1	
* 70	310-424	INTERNAL WIRE HOLDER	1	FOR GBR,ITA,FRG,FRA,HOL,DEN,FIN,SWE,AUT NOR,ESP,SUI
71	310-125	HANDLE PACKING (B)	1	
72	985-480	TAPPING SCREW (W/WASHER) D5X20	2	
73	991-690	SEAL LOCK HEX. SOCKET HD. BOLT M5X12	4	
74	991-711	DISTANCE PIECE (B)	4	
75	310-142	HANDLE (B)	1	
* 76	983-276Z	INTERNAL WIRE	1	FOR KOR,GBR,ITA,FRG,FRA,HOL,DEN,FIN,SWE AUT,NOR,ESP,SUI
* 77	959-141	CONNECTOR 50092 (10 PCS.)	2	EXCEPT FOR CHN
* 78	994-273	NOISE SUPPRESSOR	1	FOR GBR,ITA,FRG,FRA,HOL,DEN,FIN,SWE,AUT AUT,NOR,ESP,SUI
* 78	930-039	NOISE SUPPRESSOR	1	FOR KOR
* 79	930-153	SUPPORT (B)	1	FOR GBR,ITA,FRG,FRA,HOL,DEN,FIN,SWE,AUT NOR,ESP,SUI
* 80	959-140	CONNECTOR 50091 (10 PCS.)	1	FOR GBR,ITA,FRG,FRA,HOL,DEN,FIN,SWE,AUT NOR,ESP,SUI
* 81	990-861	INTERNAL WIRE	1	FOR GBR,ITA,FRG,FRA,HOL,DEN,FIN,SWE,AUT NOR,ESP,SUI
82	992-891	SWITCH (A) (1P SCREW TYPE) W/O LOCK	1	
83	310-141	HANDLE (A)	1	
* 84	309-470	TAPPING SCREW (W/FLANGE) D4X12 (BLACK)	1	FOR CHN

*: ALTERNATIVE PARTS

PARTS

H 41SA

ITEM NO.	CODE NO.	DESCRIPTION	NO. USED	REMARKS
*	85	980-958	HOLDER PLATE	1 FOR CHN
*	86	938-307	PILLAR TERMINAL	1 FOR CHN,GBR,ITA,FRG,FRA,HOL,DEN,FIN,SWE
				AUT,NOR,ESP,SUI
	87	307-028	TAPPING SCREW (W/FLANGE) D4X25 (BLACK)	3
*	88	953-327	CORD ARMOR D8.8	1
*	88	938-051	CORD ARMOR D10.1	1
	89	992-810	TERMINAL	1 FOR CORD
*	90	949-423	WASHER M4 (10 PCS.)	1 FOR GBR,ITA,FRG,FRA,HOL,DEN,FIN,SWE,AUT
				NOR,ESP,SUI
	91	984-750	TAPPING SCREW (W/FLANGE) D4X16	2
	92	960-286	CORD CLIP	1
*	92	981-987Z	CORD CLIP	1 FOR SUI
*	93	500-239Z	CORD	1 (CORD ARMOR D10.1)
*	93	500-390Z	CORD	1 (CORD ARMOR D10.1) FOR CHN,ITA,FRG,HOL,
				DEN,FIN,SWE,AUT,NOR,ESP
*	93	500-235Z	CORD	1 (CORD ARMOR D8.8) FOR INA,KOR
*	93	500-424Z	CORD	1 (CORD ARMOR D8.8) FOR KUW,SIN
	93	500-394Z	CORD	1 (CORD ARMOR D10.1) FOR SYR
*	93	500-227Z	CORD	1 (CORD ARMOR D8.8) FOR NZL
*	93	500-446Z	CORD	1 (CORD ARMOR D10.1) FOR GBR (230V)
*	93	500-391Z	CORD	1 (CORD ARMOR D10.1) FOR SUI
*	93	500-408Z	CORD	1 (CORD ARMOR D8.8) FOR AUS

*: ALTERNATIVE PARTS

STANDARD ACCESSORIES

H 41SA

ITEM NO.	CODE NO.	DESCRIPTION	NO. USED	REMARKS
501	980-752	BULL POINT 280MM (HEX. SHANK TYPE)	1	
502	943-277	HEX. BAR WRENCH 3MM	1	
503	944-458	HEX. BAR WRENCH 4MM	1	
504	944-459	HEX. BAR WRENCH 5MM	1	
505	310-131	CASE	1	

OPTIONAL ACCESSORIES

ITEM NO.	CODE NO.	DESCRIPTION	NO. USED	REMARKS
601	980-753	BULL POINT 450MM (HEX. SHANK TYPE)	1	
602	234-001	BULL POINT 280MM (10 PCS.)	1	
603	981-922	BULL POINT 280MM (ROUND SHANK TYPE)	1	
604	981-923	BULL POINT 450MM (ROUND SHANK TYPE)	1	
605	982-705	CUTTER	1	
606	981-924	CUTTER W45X280L (ROUND SHANK TYPE)	1	
607	982-710	SHANK 250L (FOR RAMMER AND BUSHING TOOL)	1	
608	955-186	SHANK 250L (FOR RAMMER AND BUSHING TOOL)	1	
609	955-183	BUSHING TOOL	1	
610	955-181	RAMMER 140MM	1	
611	980-698	EARTH ADAPTER D18X156	1	
612	991-342	EARTH ADAPTER D13X175	1	
613	991-343	EARTH ADAPTER D15.5X190	1	
614	991-344	EARTH ADAPTER D19.5X205	1	
615	982-702	ANCHOR ADAPTER NO.30	1	
616	982-703	ANCHOR ADAPTER NO.40	1	
617	982-704	ANCHOR ADAPTER NO.50	1	
618	981-929	ANCHOR ADAPTER NO.30	1	
619	981-930	ANCHOR ADAPTER NO.40	1	
620	981-931	ANCHOR ADAPTER NO.50	1	
621	944-573	TURNING HANDLE	1	
622	944-574	DRIFT KEY	1	
623	944-575	SYRINGE	1	
624	982-711	SCOOP 405L	1	
625	958-126	SCOOP 405L (ROUND SHANK TYPE)	1	
626	310-132	CYLINDER CASE COVER	1	
627	981-840	GREASE (A) FOR HAMMER.HAMMER DRILL (30G)	1	
628	308-471	GREASE FOR HAMMER.HAMMER DRILL (70G)	1	
629	980-927	GREASE FOR HAMMER.HAMMER DRILL (500G)	1	

*: ALTERNATIVE PARTS