

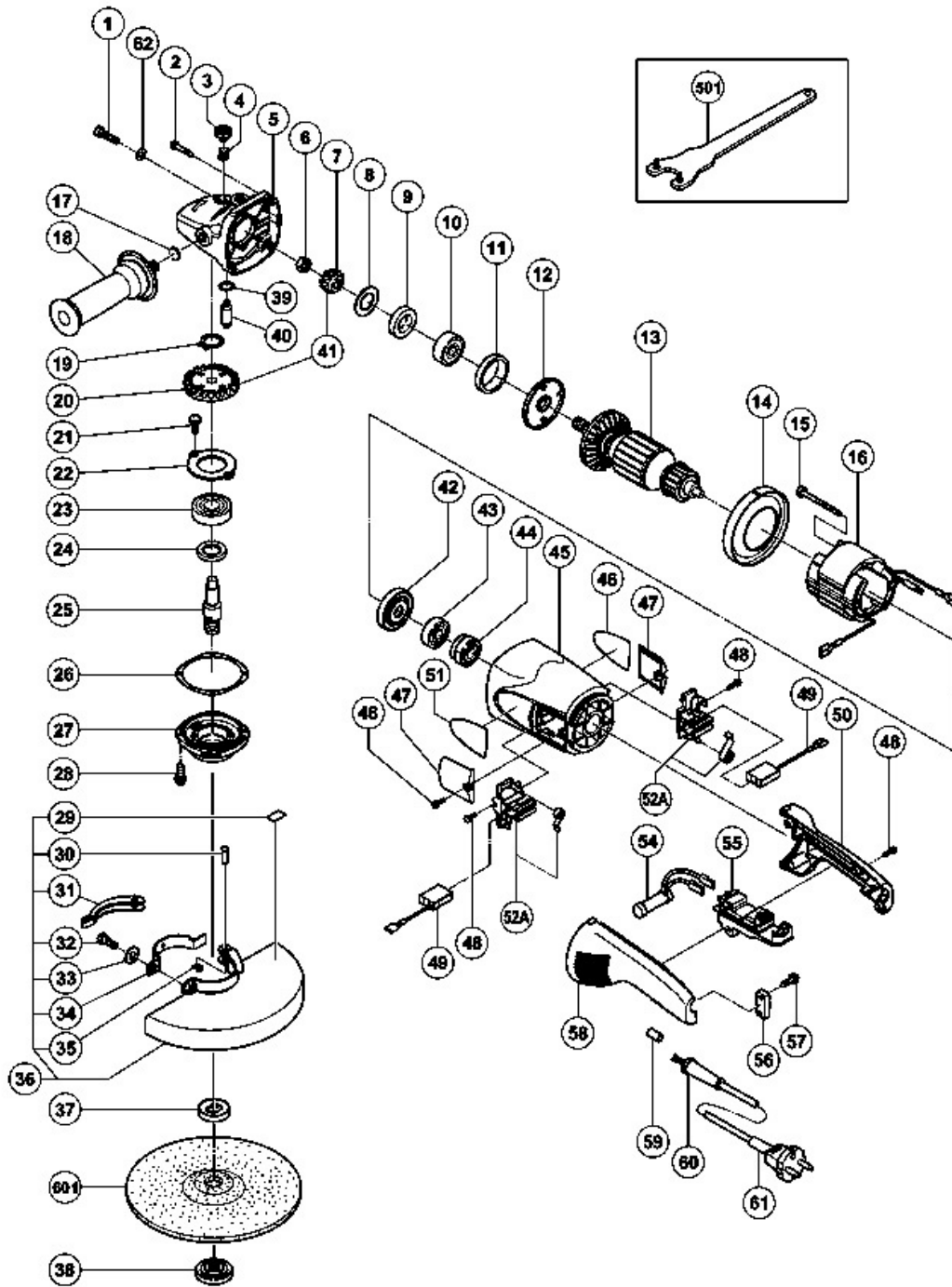
# Hitachi Power Tools

LIST NO. E255

## ELECTRIC TOOL PARTS LIST

■ DISC GRINDER  
Model G 23UA2

2004・6・1  
(E1-1)



## G23UA2

P Nr.	Art. Nr.	Beschreibung	Stueck	Kommentar	Beschreibung
1	984-509	INBUSSCHRAUBE M5X14 SELBSTSICH	2		SEAL LOCK HEX. SOCKET HD. BOLT M5X14
2	301-654	SCHNEIDSCHRAUBE D5X35 MIT FLANSCH	4		TAPPING SCREW (W/FLANGE) D5X35
3	306-888	ARRETIERKNOPF CM12Y/G18U/G23U u a G18U2/	1		PUSHING BUTTON
4	320-219	FEDER G18U2/G23U2	1		SPRING
5	320-217	GETRIEBEGEHAUSE KOMPLETT G18U2 G23U2	1	"INCLUD.3,4,17,39,40"	GEAR COVER ASS'Y
6	320-226	SPEZIALMUTTER M10	1		SPECIAL NUT M10
7	320-225	RITZEL G23U2	1		PINION
8	320-221	DICHTUNGSSCHEIBE G18U2/G23U2	1		SEAL WASHER
9	320-222	FILZPACKUNG G18U2/G23U2	1		FELT PACKING
10	630-1DD	KUGELLAGER 6301 DD	1		BALL BEARING 6301DDCMPS2L
11	994-208	GUMMIRING (B) G18SE/CM12Y u a G18U2/G23	1		RUBBER RING (B)
12	320-220	LAGERDECKEL (A) G18U2/G23U2	1		BEARING COVER (A)
13	360-594E	Anker G23UB2	1		ARMATURE 220V- 230V
14	320-215	VENTILATORFUHRUNG G18U2/G23U2	1		FAN GUIDE
15	984-271	SECHSKANTSCHNEIDSCHRAUBE D5X75	2		HEX. HD. TAPPING SCREW D5X75
16	340-546E	Stator G23UB	1		STATOR 220V- 230V
17	937-033	FILZSCHEIBE G18SC/G23SA/u a	1		FELT WASHER
18	937-981	SEITENGRIF (M14) DIV WS-TYPEN	1		SIDE HANDLE FOR M14
19	939-542	SICHERUNGSRING D12 (10ST)	1		RETAINING RING FOR D12 SHAFT (10 PCS.)
20	320-224	ZAHNRAD G23U2	1		GEAR
21	949-236	+KOPFSCHRAUBE M5X10 (10ST)	2		MACHINE SCREW M5X10 (10 PCS.)
22	320-229	LAGERDECKEL (B) G18U2/G23U2	1		BEARING COVER (B)
23	630-2DD	KUGELLAGER 6302 DD	1		BALL BEARING 6302DDCMPS2L
24	990-852	FILZPACKUNG (B) G18U/G23U u a	1		FELT PACKING (B)

		G18U2/G23			
25	320-234	SPINDEL G18U2/G23U2	1		SPINDLE
26	320-228	DICHTUNGSPLATTE G18U2/G23U2	1		SEAL PLATE
27	320-227	GETRIEBEBECKEL G18U2/G23U2	1		PACKING GLAND
28	994-192	INBUSSCHRAUBE M5X16 M FLANSCH	4		HEX. SOCKET HD. BOLT (W/FLANGE) M5X16
29	311-492	AUFKLEBER (SCHUTZHAUBE) G12SE u a	1		LABEL
30	321-546	Stift G18MRU/G23MRU	1		SET PIN
31	321-545	Hebel G18MRU/G23MRU	1		LEVER
32	306-887	#NAME?	1		BOLT M8X22
33	949-457	FEDERSCHEIBE M8 (10ST)	1		SPRING WASHER M8 (10 PCS.)
34	321-544	Bugel G18MRU/G23MRU	1		SET PIECE
35	673-489	SICHERUNGSRING (E-TYP) D5	1		RETAINING RING (E-TYPE) FOR D5 SHAFT
36	321-547	Schutzhaube G23SC2/G23SC3/G23UA2	1	INCLUD.29-35	WHEEL GUARD ASS'Y
37	937-907Z	SPANNFLANSCH G15YC/G18SC2- UB G23U-UB/G18	1		WHEEL WASHER (A)
38	937-909Z	FLANSCHMUTTER G18SC2- G18UB/G23U-B G18U2/	1		WHEEL NUT M14X2
39	320-218	O-RING G18U2/G23U2	1		O-RING
40	306-890	ARRETIERSTIFT CM12Y/G18U/G23U u a G18U2/	1		LOCK PIN
41	320-223	ZAHNRAD UND RITZEL KOMPLETT G23U2	1	"INCLUD.7,20"	GEAR AND PINION ASS'Y
42	320-216	STAUBDICHTUNG G18U2/G23U2	1		DUST SEAL
43	600-0VV	KUGELLAGER 6000 VV	1		BALL BEARING 6000VVCMP2L
44	321-536	Lagerkappe G18SE3	1		BEARING BUSHING
45	321-535	Gehäuse kpl G23UB2	1	INCLUD.44	HOUSING ASS'Y
46			1		NAME PLATE
47	320-232	BURSTENKAPPE G18U2/G23U2	2		BRUSH COVER
48	305-812	SCHNEIDSCHRAUBE D4X16 MIT FLANSCH (SCHWA	8		TAPPING SCREW (W/FLANGE) D4X16 (BLACK)
49	999-061	KOHLEBURSTEN (1PAAR)	1		CARBON BRUSH 7X17X22.5 (1 PAIR)
49	999-089	KOHLEBURSTEN SELBABSCH (1PAAR)	1		CARBON BRUSH (AUTO STOP TYPE) (1 PAIR)

49	999-061	KOHLEBURSTEN (1PAAR)	2	FOR SUI	CARBON BRUSH 7X17X22.5 (1 PAIR)
50	320-231	HANDGRIFF (B) G18U2/G23U2	1		HANDLE (B)
51			1		HITACHI LABEL
5	322-323	Kohlenhalter incl Feder G23SF2	2		BRUSH HOLDER SET
54	320-236	ANLAUFSTROMBEGRENZUNG G18U2/G23U2	1		RESISTOR
55	320-235	SCHALTER G18U2/G23U2	1	W/LOCK	SWITCH (2P PILLAR TYPE) W/SAFETY LOCK
55	320-371	Schalter G18MRU/G23MRU	1	FOR HOL	SWITCH (2P PILLAR TYPE) W/SAFETY LOCK
56	960-266	KABELKLEMME DIV TYPEN	1		CORD CLIP
57	984-750	SCHNEIDSCHRAUBE D4X16 MIT FLANSCH	2		TAPPING SCREW (W/FLANGE) D4X16
58	320-230	HANDGRIFF (A) G18U2/G23U2	1		HANDLE (A)
59	981-373	ADERENDHULSE (D) DIV TYPEN	2		TUBE (D)
60	940-778	KABELKNICKSCHUTZ D10 7 DIV TYPEN	1		CORD ARMOR D10.7
61	321-537	Kabel G18MRU/G23MRU	1	(CORD ARMOR D10.7)	CORD
61	500-391Z		1	(CORD ARMOR D10.7) FOR SUI	CORD
62	949-454	FEDERSCHEIBE M5 (10ST)	2		SPRING WASHER M5 (10 PCS.)
501	937-913Z	STIRNLOCHSCHLUSSEL DIV WS- TYPEN	1		WRENCH
601	316-825	Diamantscheibe 230mm (25 Stk) G23SR Neue	1		D. C. WHEELS 230MM A24R (25 PCS.)
602	310-337	TURBO-FLANSCH G13SC/G15SA/G18U2 G18SE2-U	1		SUPER WASHER
603	322-141		1		PIPE HANDLE
604	985-597		2	FOR PIPE HANDLE	BOLT M14