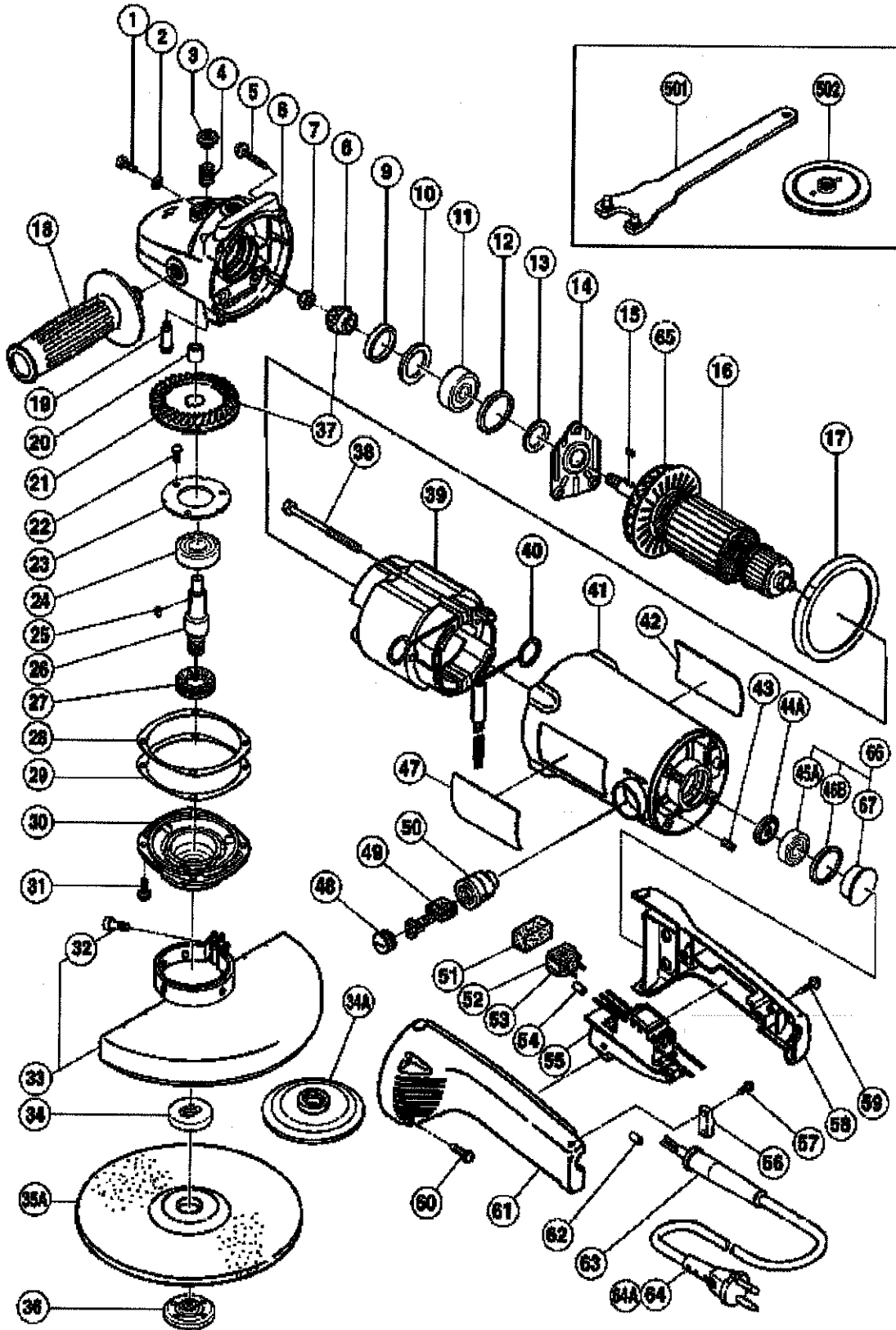


ELECTRIC TOOL PARTS LIST

■ DISC GRINDER
Model G 23UA

2002-6-1
(E2-2)



PARTS

G23UA

| ITEM No. | CODE No. | DESCRIPTION | No. USED | REMARKS |
|----------|----------|---------------------------------------|----------|------------------|
| 1 | 949-238 | MACHINE SCREW M5X14 (10 PCS.) | 3 | |
| 2 | 949-454 | SPRING WASHER M5 (10 PCS.) | 3 | |
| 3 | 306-888 | PUSHING BUTTON | 1 | |
| 4 | 306-889 | SPRING | 1 | |
| 5 | 301-654 | TAPPING SCREW (W/FLANGE) D5X35 | 4 | |
| 6 | 306-105 | GEAR COVER ASS'Y | 1 | INCLUD.3,4,19,20 |
| 7 | 946-228 | U-NUT M8 | 1 | |
| 8 | 306-110 | PINION | 1 | |
| 9 | 306-107 | SEAL RING (A) | 1 | |
| 10 | 306-113 | WASHER (A) | 1 | |
| 11 | 630-1DD | BALL BEARING 6301DDCMPS2L | 1 | |
| 12 | 994-208 | RUBBER RING (B) | 1 | |
| 13 | 990-864 | FELT PACKING (A) | 1 | |
| 14 | 306-106 | BEARING COVER | 1 | |
| 15 | 940-533 | FEATHER KEY 3X3X10 | 1 | |
| * 16 | 360-287E | ARMATURE ASS'Y 220V-230V | 1 | INCLUD.65 |
| * 16 | 360-287F | ARMATURE ASS'Y 240V | 1 | INCLUD.65 |
| 17 | 306-103 | FAN GUIDE | 1 | |
| 18 | 937-981 | SIDE HANDLE FOR M14 | 1 | |
| 19 | 306-890 | LOCK PIN | 1 | |
| 20 | 673-002 | NEEDLE BEARING (HK1212) | 1 | |
| 21 | 306-109 | GEAR | 1 | |
| 22 | 992-038 | SEAL LOCK SCREW (W/SP. WASHER) M5X10 | 3 | |
| 23 | 937-035 | BEARING COVER (B) | 1 | |
| 24 | 630-2DD | BALL BEARING 6302DDCMPS2L | 1 | |
| 25 | 980-809 | FEATHER KEY 4X4X8 | 1 | |
| 26 | 990-857 | SPINDLE | 1 | |
| 27 | 990-852 | FELT PACKING (B) | 1 | |
| 28 | 306-112 | SEAL PLATE | 1 | |
| 29 | 306-981 | THRUST WASHER | 1 | |
| 30 | 306-111 | PACKING GLAND | 1 | |
| 31 | 994-192 | HEX. SOCKET HD. BOLT (W/FLANGE) M5X16 | 4 | |
| 32 | 306-887 | BOLT M8X22 | 1 | |
| 33 | 306-120 | WHEEL GUARD ASS'Y | 1 | INCLUD.32 |
| * 34 | 937-907Z | WHEEL WASHER (A) | 1 | |
| * 34A | 937-908Z | WHEEL WASHER (B) | 1 | FOR NZL |
| 35A | 316-825 | D. C. WHEELS 230MM A24R (25 PCS.) | 1 | |
| 36 | 937-909Z | WHEEL NUT M14X2 | 1 | |

*ALTERNATIVE PARTS

-- 2--

PARTS

G23UA

| ITEM No. | CODE No. | DESCRIPTION | No. USED | REMARKS |
|----------|----------|--|----------|----------------------------|
| 37 | 306-108 | GEAR AND PINION ASS'Y | 1 | INCLUD.8,21 |
| 38 | 984-271 | HEX. HD. TAPPING SCREW D5X75 | 2 | |
| * 39 | 340-283E | STATOR ASS'Y 230V | 1 | INCLUD.40 |
| * 39 | 340-283F | STATOR ASS'Y 240V | 1 | INCLUD.40 |
| 40 | 958-032 | BRUSH TERMINAL | 2 | |
| 41 | 306-102 | HOUSING ASS'Y | 1 | INCLUD.43,50 |
| 42 | | NAME PLATE | 1 | |
| 43 | 938-477 | HEX. SOCKET SET SCREW M5X8 | 2 | |
| 44A | 310-998 | DUST SEAL | 1 | |
| 45A | 600-0VV | BALL BEARING 6000VVCMP2L | 1 | |
| 46B | 994-202 | RUBBER RING (A) | 1 | |
| 47 | | HITACHI LABEL | 1 | |
| 48 | 940-540 | BRUSH CAP | 2 | |
| 49 | 999-044 | CARBON BRUSH (1 PAIR) | 2 | |
| 50 | 980-487 | BRUSH HOLDER | 2 | |
| 51 | 306-117 | DUST PACKING | 1 | |
| 52 | 994-273 | NOISE SUPPRESSOR | 1 | |
| 53 | 306-114 | SUPPORT (B) | 1 | |
| 54 | 981-373 | TUBE (D) | 3 | |
| * 55 | 307-649 | SWITCH (2P PILLAR TYPE) W/SAFETY LOCK | 1 | W/LOCK |
| * 55 | 307-650 | SWITCH (2P PILLAR TYPE) W/SAFETY LOCK | 1 | W/O LOCK FOR GBR,FIN,NZL |
| 56 | 960-266 | CORD CLIP | 1 | |
| 57 | 984-750 | TAPPING SCREW (W/FLANGE) D4X16 | 2 | |
| 58 | 306-119 | HANDLE (B) | 1 | |
| 59 | 304-035 | TAPPING SCREW (W/FLANGE) D4X25 (BLACK) | 2 | |
| 60 | 305-558 | TAPPING SCREW (W/FLANGE) D5X25 (BLACK) | 4 | |
| 61 | 306-118 | HANDLE (A) | 1 | |
| * 62 | 981-373 | TUBE (D) | 2 | FOR CORD |
| * 63 | 940-778 | CORD ARMOR D10.7 | 1 | |
| * 64 | 500-247Z | CORD | 1 | (CORD ARMOR D10.7) |
| * 64 | 500-246Z | CORD | 1 | (CORD ARMOR D10.7) FOR GBR |
| * 64 | 500-248Z | CORD | 1 | (CORD ARMOR D10.7) FOR SU |
| * 64A | 500-439Z | CORD | 1 | (CORD ARMOR D10.7) FOR NZL |
| 65 | 319-657 | FAN | 1 | |
| 66 | 320-246 | BUSHING AND BALL BEARING ASS'Y | 1 | INCLUD.45A,46B,67 |
| 67 | 320-247 | BEARING BUSHING | 1 | |

*ALTERNATIVE PARTS

-- 3--

STANDARD ACCESSORIES

G23UA

| ITEM No. | CODE No. | DESCRIPTION | No. USED | REMARKS |
|----------|----------|---------------|----------|-------------------------|
| 501 | 937-913Z | WRENCH | 1 | |
| * 502 | 937-917Z | WHEEL NUT (B) | 1 | (DIAMOND WHEEL) FOR NZL |

*:ALTERNATIVE PARTS