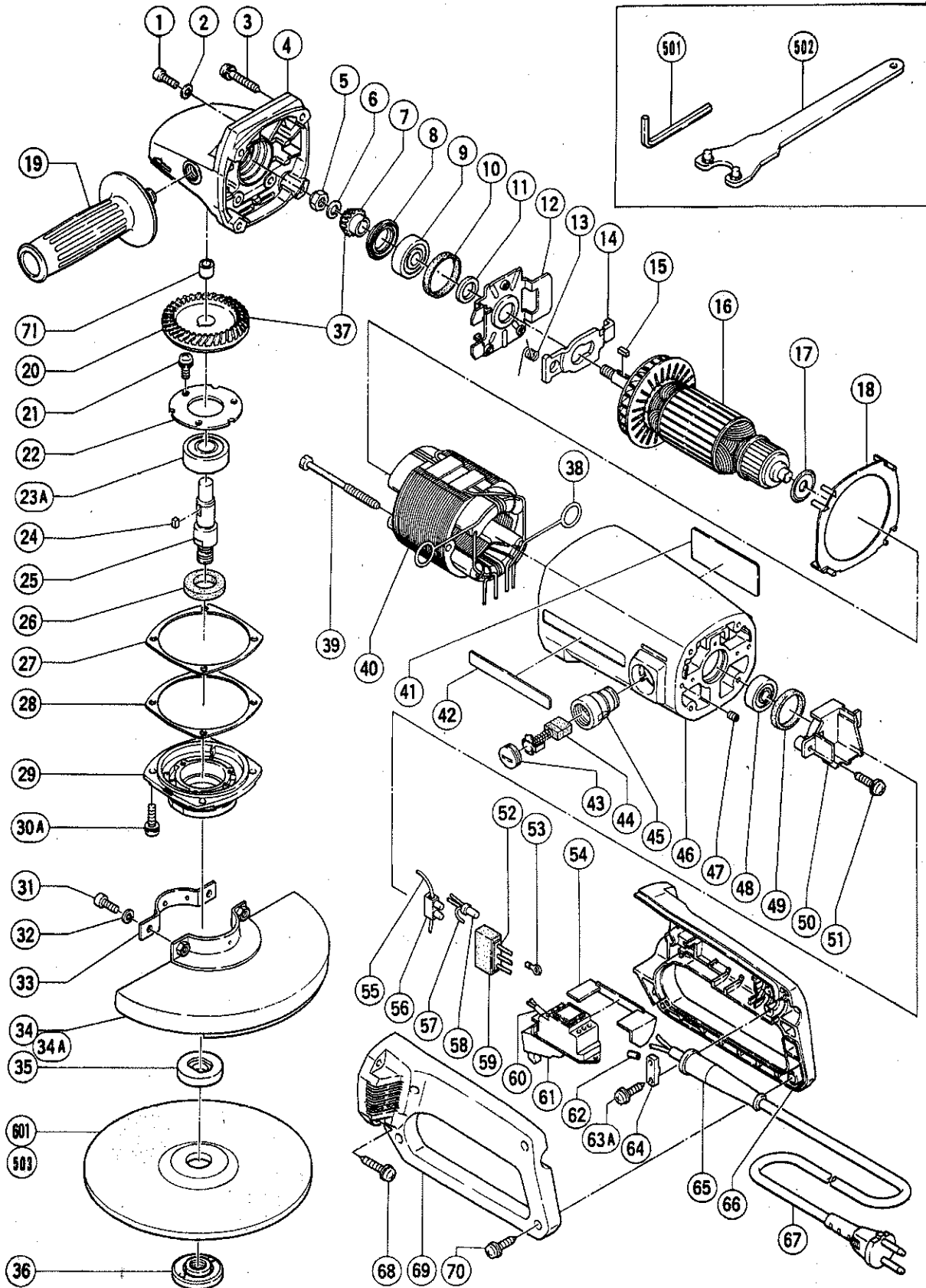


## ELECTRIC TOOL PARTS LIST

■ DISC GRINDER  
Model G 23SD

1992 · 8 · 31  
(E4)



## PARTS

G 23SD

ITEM NO.	CODE NO.	DESCRIPTION	NO. USED	REMARKS
1	991-690	SEAL LOCK HEX. SOCKET HD. BOLT M5X12	3	
2	949-454	SPRING WASHER M5 (10 PCS.)	3	
3	983-454	TAPPING SCREW (W/SP. WASHER) D5X40	4	
4	994-203	GEAR COVER ASS'Y	1	INCLUD.71
5	946-228	U - NUT M8	1	
6	957-042	SUPER LOCK WASHER M8	1	
7	937-899	PINION	1	
8	994-209	SEAL RING	1	
9	630-1DD	BALL BEARING 6301DDUCMPS2S	1	
10	994-208	RUBBER RING (B)	1	
11	990-864	FELT PACKING (A)	1	
12	994-204	BEARING COVER (B)	1	
13	994-148	SPRING	1	
14	994-205	LOCK PLATE	1	
15	940-533	FEATHER KEY 3X3X10	1	
* 16	360-024E	ARMATURE 220V	1	
* 16	360-024F	ARMATURE 230V - 240V	1	
17	955-260	DUST SEAL (A)	1	
18	994-200	FAN GUIDE	1	
19	937-981Z	SIDE HANDLE FOR M14	1	
20	994-271	GEAR	1	
21	992-038	SEAL LOCK SCREW (W/SP. WASHER) M5X10	3	
22	937-035	BEARING COVER (B)	1	
23A	630-2DD	BALL BEARING 6302DDUCMPS2S	1	
24	980-809	FEATHER KEY 4X4X8	1	
25	990-857	SPINDLE	1	
26	990-852	FELT PACKING (B)	1	
27	990-855	SEAL PACKING (B)	1	
28	990-856	THRUST WASHER (B)	1	
29	993-996	PACKING GLAND	1	
30A	994-192	HEX. SOCKET HD. BOLT (W/FLANGE) M5X16	4	
* 31	949-656	HEX. SOCKET HD. BOLT M8X20 (10 PCS.)	2	
* 31	949-656	HEX. SOCKET HD. BOLT M8X20 (10 PCS.)	1	FOR HOL,FIN
* 32	949-457	SPRING WASHER M8 (10 PCS.)	2	
* 32	949-457	SPRING WASHER M8 (10 PCS.)	1	FOR HOL,FIN
* 33	937-911	SET RING (A)	1	EXCEPT HOL,FIN
* 34	937-912Z	WHEEL GUARD	1	
* 34A	995-980	WHEEL GUARD	1	FOR HOL,FIN
35	937-907Z	WHEEL WASHER (A)	1	
36	937-909Z	WHEEL NUT M14X2	1	
37	994-270	GEAR ASS'Y	1	INCLUD.7,20
38	958-032	BRUSH TERMINAL	2	
39	961-993	HEX. TAPPING SCREW D5X80	2	
* 40	991-833L	STATOR ASS'Y 220V	1	INCLUD.38
* 40	991-833M	STATOR ASS'Y 230V - 240V	1	INCLUD.38
41		NAME PLATE	1	
42	938-098	HITACHI LABEL	1	
43	940-540	BRUSH CAP	2	
44	999-044	CARBON BRUSH (1 PAIR)	2	
45	980-487	BRUSH HOLDER	2	
46	994-213	HOUSING ASS'Y	1	INCLUD.45,47

\*: ALTERNATIVE PARTS



