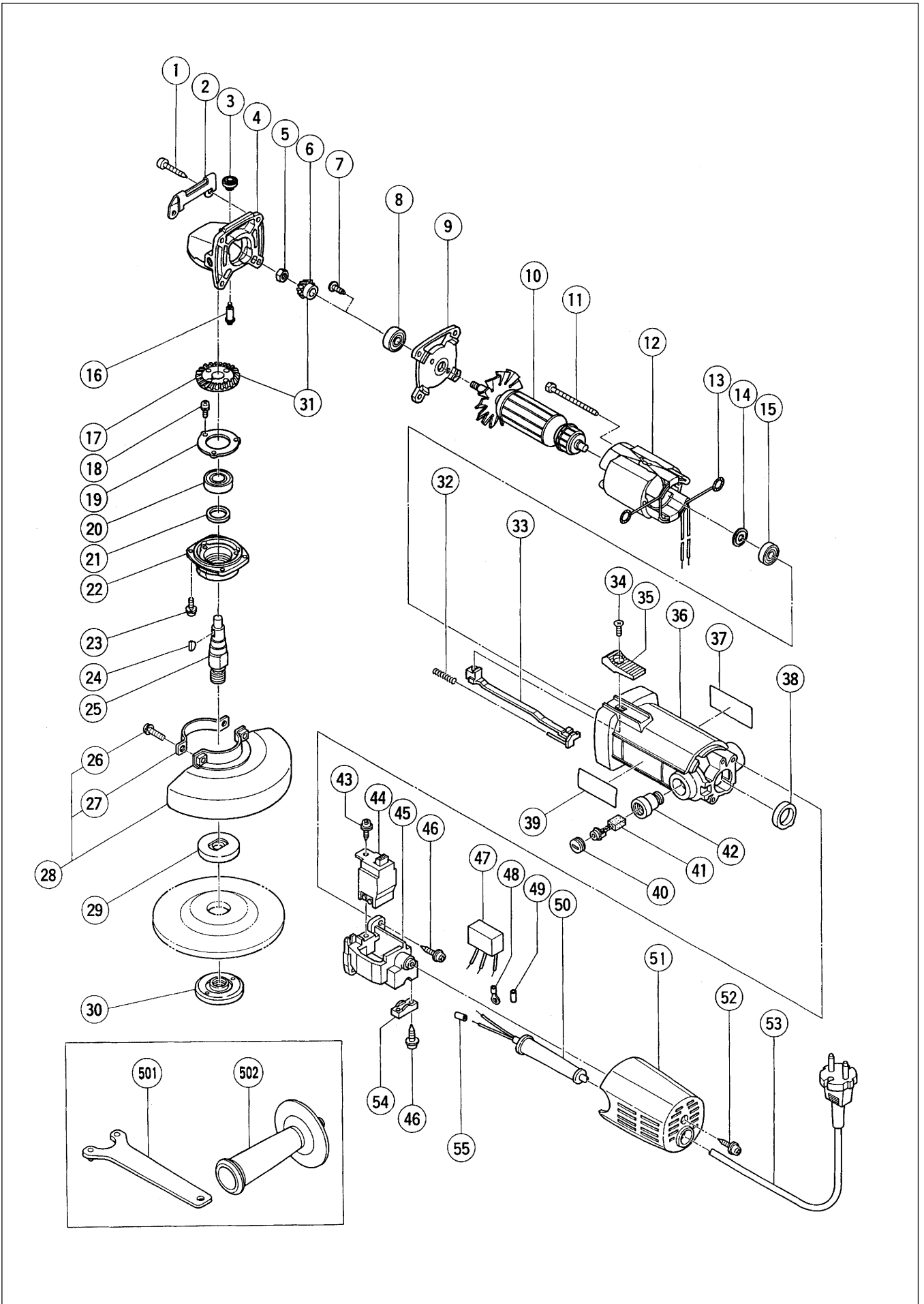


Assembly Diagram for G 13SR



PARTS

G 13SR

ITEM NO.	CODE NO.	DESCRIPTION	NO. USED	REMARKS	
1	937-807	TAPPING SCREW D5X25	1		
2	302-149	GUARD PLATE	1		
3	301-944	PUSHING BUTTON	1		
4	314-125	GEAR COVER ASS'Y	1	INCLUD.3,16	
5	301-941	SPECIAL NUT M7	1		
6	301-939	PINION	1		
7	314-430	SLOTTED HD. SCREW (SEAL LOCK) M4X10	2		
8	608-VVM	BALL BEARING 608VVC2PS2L	1		
9	301-935	INNER COVER	1		
10	360-163E	ARMATURE 220V-230V	1		
11	982-021	HEX. HD. TAPPING SCREW D4X70	2		
* 12	340-187E	STATOR ASS'Y 220V	1	INCLUD.13	
* 12	340-477G	STATOR ASS'Y 220V	1	INCLUD.13 FOR CHN	
13	931-867	BRUSH TERMINAL	2		
14	980-865	WASHER (A)	1		
15	626-VVM	BALL BEARING 626VVC2PS2L	1		
16	301-943	LOCK PIN	1		
17	301-940	GEAR	1		
18	987-201	SEAL LOCK SCREW (W/SP. WASHER) M4X10	3		
19	938-058	BEARING COVER (B)	1		
20	600-1VV	BALL BEARING 6001VVCMP2L	1		
21	301-946	FELT PACKING	1		
22	301-947	PACKING GLAND	1		
23	987-203	SEAL LOCK SCREW (W/SP. WASHER) M4X12	4		
24	940-220	WOODRUFF KEY 2.5X8	1		
25	319-117	SPINDLE	1		
26	308-386	MACHINE SCREW (W/SP. WASHER) M5X16(BLACK)	2		
27	301-949	SET PLATE	1		
28	319-116	WHEEL GUARD ASS'Y	1	INCLUD.26,27	
29	937-817Z	WHEEL WASHER	1		
30	994-324	WHEEL NUT M14	1		
31	301-938	GEAR AND PINION ASS'Y	1	INCLUD.6,17	
32	938-299	SPRING	1		
33	982-033	SLIDE BAR	1		
34	949-322	FLAT HD. SCREW M4X10 (10 PCS.)	1		
35	994-298	SLIDE KNOB (C)	1		
36	315-493	HOUSING ASS'Y	1	INCLUD.42	
* 37		NAME PLATE	1		
38	307-010	BEARING BUSHING	1		
39		HITACHI LABEL	1		
40	937-847	BRUSH CAP	2		
41	999-021	CARBON BRUSH (1 PAIR)	2		
42	937-846	BRUSH HOLDER	2		
43	305-720	TAPPING SCREW (W/FLANGE) D4X12	1		
44	980-778	SLIDE SWITCH (2P PILLAR TYPE)	1		
45	982-044	SWITCH HOLDER	1		
46	984-750	TAPPING SCREW (W/FLANGE) D4X16	4		
* 47	994-273	NOISE SUPPRESSOR	1	FOR CHN	
* 48	959-144	TERMINAL 50051 (10 PCS.)	1	FOR CHN	
* 49	981-373	TUBE (D)	2	FOR CHN	
50	953-327	CORD ARMOR D8.8	1		

