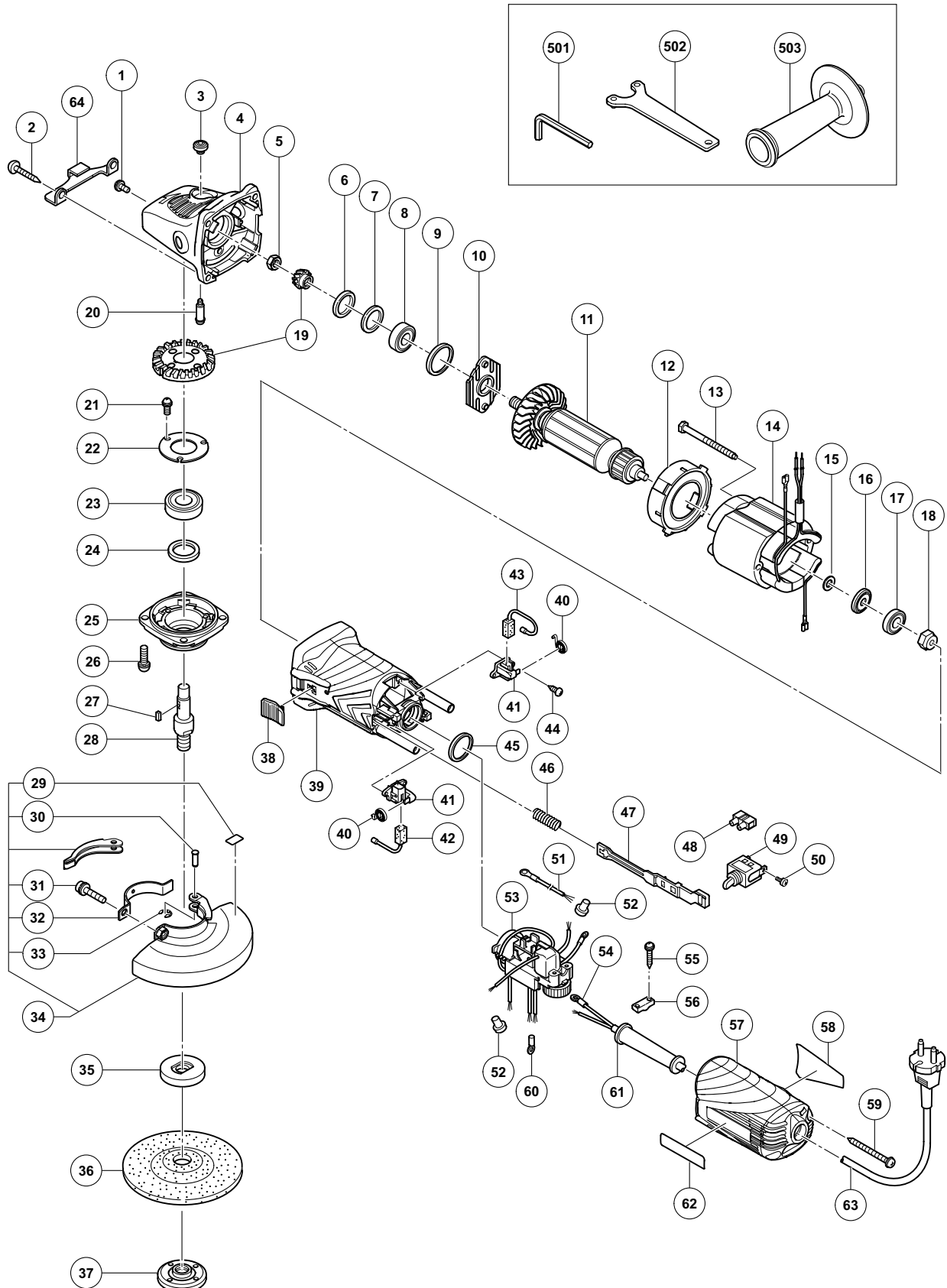


## ELECTRIC TOOL PARTS LIST

**DISC GRINDER**  
**Model G 12VA**

**2009·8·28**  
**(E1)**



**PARTS**

G 12VA

| ITEM NO. | CODE NO. | DESCRIPTION                              | NO. USED | REMARKS           |
|----------|----------|--|----------|-------------------|
| 1        | 303-255  | SEAL LOCK SCREW (W/SP. WASHER) M4 X 10   | 2        |                   |
| 2        | 320-523  | TAPPING SCREW D5 X 25 (BLACK)            | 4        |                   |
| 3        | 301-944  | PUSHING BUTTON                           | 1        |                   |
| 4        | 321-737  | GEAR COVER ASS'Y                         | 1        | INCLUD. 3, 20     |
| 5        | 949-558  | NUT M8 (10 PCS.)                         | 1        |                   |
| 6        | 308-543  | SEAL RING (A)                            | 1        |                   |
| 7        | 980-866  | WASHER (C)                               | 1        |                   |
| 8        | 629-T12  | BALL BEARING 629T12DDC3PS2-L             | 1        |                   |
| 9        | 957-754  | RUBBER RING                              | 1        |                   |
| 10       | 321-734  | BEARING COVER                            | 1        |                   |
| * 11     | 360-869U | ARMATURE ASS'Y 120V                      | 1        | INCLUD. 8, 15-17  |
| * 11     | 360-869E | ARMATURE 230V-240V                       | 1        |                   |
| 12       | 321-732  | FAN GUIDE                                | 1        |                   |
| 13       | 982-021  | HEX. HD. TAPPING SCREW D4 X 70           | 2        |                   |
| * 14     | 340-749D | STATOR 120V-127V                         | 1        |                   |
| * 14     | 340-749E | STATOR ASS'Y 220V-240V                   | 1        |                   |
| 15       | 311-737  | THRUST WASHER                            | 1        |                   |
| 16       | 311-435  | DUST SEAL (A)                            | 1        |                   |
| 17       | 608-VVM  | BALL BEARING 608VVC2PS2L                 | 1        |                   |
| 18       | 325-475  | MAGNET                                   | 1        |                   |
| 19       | 329-054  | GEAR AND PINION SET                      | 1        |                   |
| 20       | 301-943  | LOCK PIN                                 | 1        |                   |
| 21       | 991-207  | SEAL LOCK SCREW (W/SP. WASHER) M4 X 8    | 3        |                   |
| 22       | 936-680  | BEARING COVER (B)                        | 1        |                   |
| 23       | 620-1DD  | BALL BEARING 6201DDCMPS2L                | 1        |                   |
| 24       | 308-546  | FELT PACKING                             | 1        |                   |
| 25       | 308-545  | PACKING GLAND                            | 1        |                   |
| 26       | 307-046  | SEAL LOCK SCREW (W/SP. WASHER) M5 X 16   | 4        |                   |
| 27       | 944-109  | FEATHER KEY 3 X 3 X 8                    | 1        |                   |
| * 28     | 994-301  | SPINDLE (A)                              | 1        |                   |
| * 28     | 994-302  | SPINDLE (B)                              | 1        | FOR USA, CAN, MEX |
| 29       | 311-492  | LABEL                                    | 1        |                   |
| 30       | 311-744  | SET PIN                                  | 1        |                   |
| 31       | 316-107  | HEX. SOCKET HD. BOLT (W/WASHERS) M5 X 20 | 1        |                   |
| 32       | 311-491  | SET PIECE (B)                            | 1        |                   |
| 33       | 874-759  | RETAINING RING (E-TYPE) FOR D2.5 SHAFT   | 1        |                   |
| 34       | 311-745  | WHEEL GUARD ASS'Y (TOOLLESS TYPE)        | 1        | INCLUD. 29-33     |
| * 35     | 937-817Z | WHEEL WASHER                             | 1        |                   |
| * 35     | 937-928Z | WHEEL WASHER (A) FOR D16 HOLE            | 1        | FOR USA, CAN, MEX |
| 36       | 316-821  | D. C. WHEELS 115MM A36Q (25 PCS.)        | 1        |                   |
| * 37     | 994-324  | WHEEL NUT M14                            | 1        |                   |
| * 37     | 937-923P | WHEEL NUT 5/8"-11UNC                     | 1        | FOR USA, CAN, MEX |
| 38       | 330-810  | SLIDE SWITCH KNOB                        | 1        |                   |
| 39       | 330-808  | HOUSING                                  | 1        |                   |
| 40       | 308-536  | SPRING                                   | 2        |                   |
| 41       | 308-535  | BRUSH HOLDER                             | 2        |                   |
| 42       | 999-088  | CARBON BRUSH (1 PAIR)                    | 1        |                   |
| 43       | 999-076  | CARBON BRUSH (AUTO STOP TYPE) (1 PAIR)   | 1        |                   |
| 44       | 306-945  | TAPPING SCREW D3 X 10                    | 4        |                   |
| 45       | 995-662  | RUBBER RING                              | 1        |                   |



