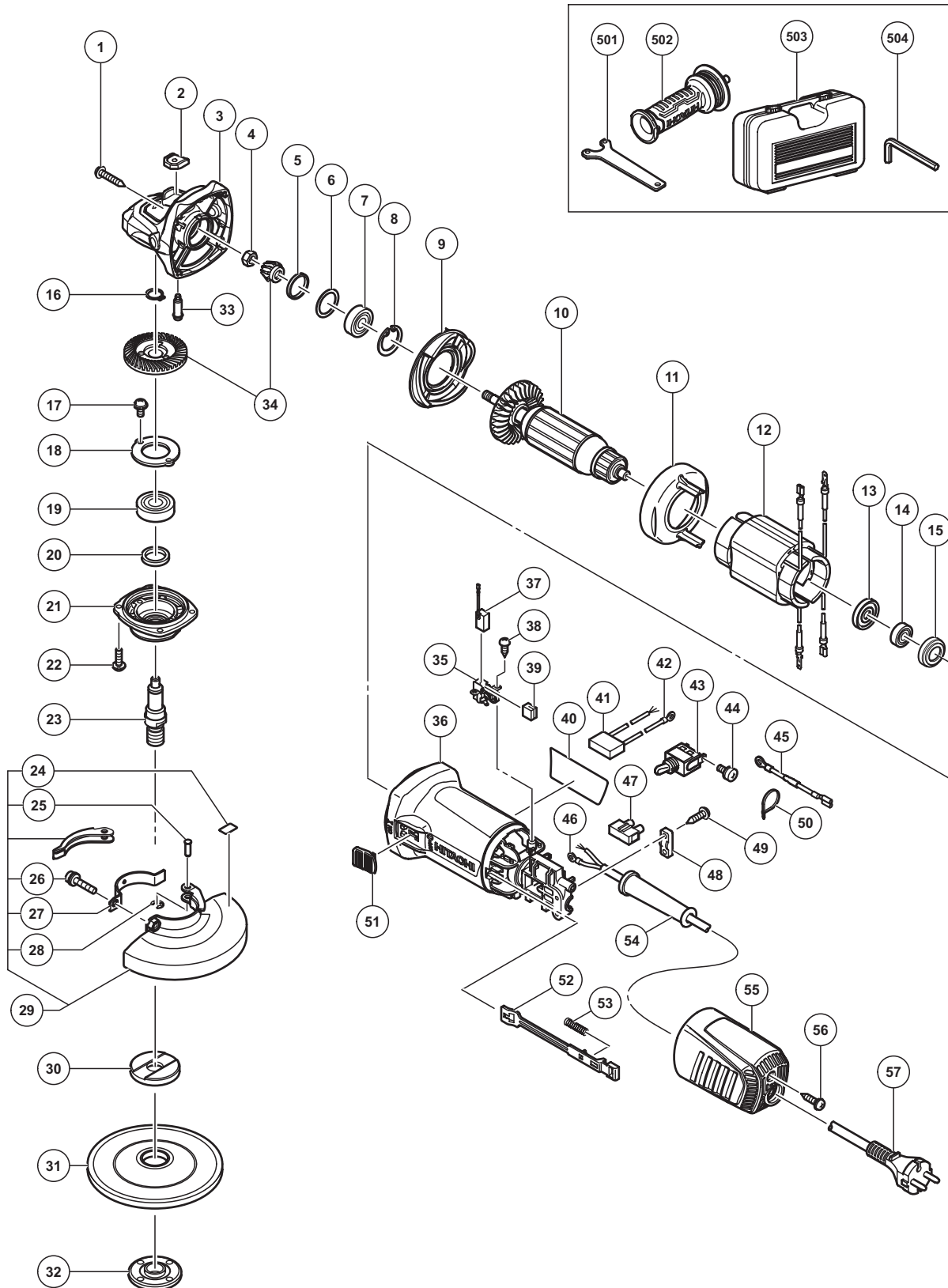


## ELECTRIC TOOL PARTS LIST

### DISC GRINDER Model G 12SW

2014 · 2 · 7

(E1)



**PARTS**

G 12SW

| ITEM NO. | CODE NO. | DESCRIPTION                              | NO. USED | REMARKS      |
|----------|----------|--|----------|--------------|
| 1        | 307028   | TAPPING SCREW (W/FLANGE) D4 X 25 (BLACK) | 4        |              |
| 2        | 336535   | PUSHING BUTTON                           | 1        |              |
| 3        | 336870   | GEAR COVER ASS'Y                         | 1        | INCLUD.2,33  |
| 4        | 301941   | SPECIAL NUT M7                           | 1        |              |
| 5        | 308543   | SEAL RING (A)                            | 1        |              |
| 6        | 980866   | WASHER (C)                               | 1        |              |
| 7        | 629VVM   | BALL BEARING 629VVC2PS2L                 | 1        |              |
| 8        | 939554   | RETAINING RING FOR D26 HOLE (10 PCS.)    | 1        |              |
| 9        | 336542   | DIFFUSER                                 | 1        |              |
| * 10     | 360970C  | ARMATURE 110V-120V                       | 1        |              |
| * 10     | 360970B  | ARMATURE 127V                            | 1        |              |
| * 10     | 360970D  | ARMATURE 220V                            | 1        |              |
| * 10     | 360970E  | ARMATURE 230V                            | 1        |              |
| * 10     | 360970F  | ARMATURE 240V                            | 1        |              |
| 11       | 336530   | FAN GUIDE                                | 1        |              |
| * 12     | 340870B  | STATOR 110V                              | 1        |              |
| * 12     | 340870C  | STATOR 120V-127V                         | 1        |              |
| * 12     | 340870D  | STATOR 220V                              | 1        |              |
| * 12     | 340870E  | STATOR 230V                              | 1        |              |
| * 12     | 340870F  | STATOR 240V                              | 1        |              |
| 13       | 336536   | DUST SEAL                                | 1        |              |
| 14       | 336871   | BALL BEARING 698SS                       | 1        |              |
| 15       | 309929   | RUBBER BUSHING                           | 1        |              |
| 16       | 939542   | RETAINING RING FOR D12 SHAFT (10 PCS.)   | 1        |              |
| 17       | 991207   | SEAL LOCK SCREW (W/SP. WASHER) M4 X 8    | 2        |              |
| 18       | 316490   | BEARING COVER                            | 1        |              |
| 19       | 6201VV   | BALL BEARING 6201VVCMP2L                 | 1        |              |
| 20       | 301946   | FELT PACKING                             | 1        |              |
| 21       | 336538   | PACKING GLAND                            | 1        |              |
| 22       | 307127   | SEAL LOCK SCREW (W/SP. WASHER) M4 X 12   | 4        |              |
| * 23     | 336539   | SPINDLE                                  | 1        |              |
| * 23     | 336543   | SPINDLE                                  | 1        | FOR USA,CAN  |
| 24       | 311492   | LABEL                                    | 1        |              |
| 25       | 311744   | SET PIN                                  | 1        |              |
| 26       | 316107   | HEX. SOCKET HD. BOLT (W/WASHERS) M5 X 20 | 1        |              |
| 27       | 311491   | SET PIECE (B)                            | 1        |              |
| 28       | 874759   | RETAINING RING (E-TYPE) FOR D2.5 SHAFT   | 1        |              |
| 29       | 311745   | WHEEL GUARD ASS'Y (TOOLLESS TYPE)        | 1        | INCLUD.24-28 |
| * 30     | 937817Z  | WHEEL WASHER                             | 1        |              |
| * 30     | 310338   | SUPER WASHER                             | 1        | FOR FRG      |
| * 30     | 319373   | WHEEL WASHER                             | 1        | FOR USA,CAN  |
| 31       | 316821   | D. C. WHEELS 115MM A36Q (25 PCS.)        | 1        |              |
| * 32     | 994324   | WHEEL NUT M14                            | 1        |              |
| * 32     | 937923P  | WHEEL NUT 5/8"-11UNC                     | 1        | FOR USA,CAN  |
| 33       | 301943   | LOCK PIN                                 | 1        |              |
| 34       | 336531   | GEAR SET                                 | 1        |              |
| 35       | 336537   | BRUSH HOLDER                             | 2        |              |
| 36       | 336541   | HOUSING                                  | 1        |              |
| 37       | 999088   | CARBON BRUSH (1 PAIR)                    | 2        |              |
| 38       | 328210   | TAPPING SCREW D3 X 8                     | 4        |              |

# PARTS

G 12SW

| ITEM NO. | CODE NO. | DESCRIPTION                              | NO. USED | REMARKS                           |
|----------|----------|--|----------|-----------------------------------|
| 39       | 336872   | CUSHION SPONGE                           | 2        |                                   |
| 40       |          | NAME PLATE                               | 1        |                                   |
| * 41     | 930039   | NOISE SUPPRESSOR                         | 1        | EXCEPT FOR UAE,USA,CAN,BRA        |
| * 42     | 980063   | TERMINAL                                 | 1        | FOR NOISE SUPPRESSOR              |
| 43       | 314603   | SWITCH (1P SOLDER TYPE)                  | 1        | INCLUD.44                         |
| 44       | 980060   | MACHINE SCREW (W/WASHER) M3.5 X 5        | 2        |                                   |
| 45       | 336873   | INTERNAL WIRE                            | 1        |                                   |
| * 46     | 980063   | TERMINAL                                 | 1        | FOR CORD                          |
| * 46     | 930804   | TERMINAL M4.0 (10 PCS.)                  | 1        | FOR CORD FOR USA,CAN              |
| 47       | 938307   | PILLAR TERMINAL                          | 1        |                                   |
| 48       | 937631   | CORD CLIP                                | 1        |                                   |
| 49       | 984750   | TAPPING SCREW (W/FLANGE) D4 X 16         | 2        |                                   |
| 50       | 975144   | CABLE TIE                                | 1        |                                   |
| 51       | 336533   | SLIDE SWITCH KNOB                        | 1        |                                   |
| 52       | 336534   | SLIDE BAR                                | 1        |                                   |
| 53       | 314429   | SPRING                                   | 1        |                                   |
| * 54     | 953327   | CORD ARMOR D8.8                          | 1        |                                   |
| * 54     | 938051   | CORD ARMOR D10.1                         | 1        |                                   |
| 55       | 336532   | TAIL COVER                               | 1        |                                   |
| 56       | 307811   | TAPPING SCREW (W/FLANGE) D4 X 16 (BLACK) | 1        |                                   |
| * 57     | 500409Z  | CORD                                     | 1        | (CORD ARMOR D8.8)                 |
| * 57     | 500470Z  | CORD                                     | 1        | (CORD ARMOR D10.1) FOR UAE (110V) |
| * 57     | 500436Z  | CORD                                     | 1        | (CORD ARMOR D8.8) FOR GBR (230V)  |
| * 57     | 500463Z  | CORD                                     | 1        | (CORD ARMOR D8.8) FOR GBR (110V)  |
| * 57     | 500241Z  | CORD                                     | 1        | (CORD ARMOR D8.8) FOR USA,CAN     |
| * 57     | 500487Z  | CORD                                     | 1        | (CORD ARMOR D8.8) FOR BRA         |
| * 57     | 500439Z  | CORD                                     | 1        | (CORD ARMOR D8.8) FOR NZL         |
|          |          |  |          |                                   |
|          |          |  |          |                                   |
|          |          |  |          |                                   |
|          |          |  |          |                                   |
|          |          |  |          |                                   |
|          |          |  |          |                                   |
|          |          |  |          |                                   |
|          |          |  |          |                                   |
|          |          |  |          |                                   |
|          |          |  |          |                                   |
|          |          |  |          |                                   |
|          |          |  |          |                                   |
|          |          |  |          |                                   |
|          |          |  |          |                                   |
|          |          |  |          |                                   |
|          |          |  |          |                                   |
|          |          |  |          |                                   |
|          |          |  |          |                                   |
|          |          |  |          |                                   |
|          |          |  |          |                                   |
|          |          |  |          |                                   |
|          |          |  |          |                                   |
|          |          |  |          |                                   |
|          |          |  |          |                                   |
|          |          |  |          |                                   |
|          |          |  |          |                                   |
|          |          |  |          |                                   |
|          |          |  |          |                                   |
|          |          |  |          |                                   |
|          |          |  |          |                                   |
|          |          |  |          |                                   |

**STANDARD ACCESSORIES**

G 12SW

| ITEM NO. | CODE NO. | DESCRIPTION         | NO. USED | REMARKS |
|----------|----------|---------------------|----------|---------|
| 501      | 938332Z  | WRENCH              | 1        |         |
| 502      | 336865   | SIDE HANDLE         | 1        |         |
| * 503    | 336874   | CASE                | 1        | FOR AUT |
| 504      | 944458   | HEX. BAR WRENCH 4MM | 1        |         |
|          |          |                     |          |         |
|          |          |                     |          |         |
|          |          |                     |          |         |
|          |          |                     |          |         |
|          |          |                     |          |         |
|          |          |                     |          |         |
|          |          |                     |          |         |
|          |          |                     |          |         |
|          |          |                     |          |         |
|          |          |                     |          |         |

**OPTIONAL ACCESSORIES**

| ITEM NO. | CODE NO. | DESCRIPTION                          | NO. USED | REMARKS            |
|----------|----------|--------------------------------------|----------|--------------------|
| 601      | 314095   | SANDING DISCS 115MM C-P16 (10 PCS.)  | 1        |                    |
| 602      | 314096   | SANDING DISCS 115MM C-P20 (10 PCS.)  | 1        |                    |
| 603      | 314097   | SANDING DISCS 115MM C-P24 (10 PCS.)  | 1        |                    |
| 604      | 314098   | SANDING DISCS 115MM C-P30 (10 PCS.)  | 1        |                    |
| 605      | 314099   | SANDING DISCS 115MM C-P36 (10 PCS.)  | 1        |                    |
| 606      | 314100   | SANDING DISCS 115MM C-P40 (10 PCS.)  | 1        |                    |
| 607      | 314101   | SANDING DISCS 115MM C-P50 (10 PCS.)  | 1        |                    |
| 608      | 314102   | SANDING DISCS 115MM C-P60 (10 PCS.)  | 1        |                    |
| 609      | 314103   | SANDING DISCS 115MM C-P80 (10 PCS.)  | 1        |                    |
| 610      | 314104   | SANDING DISCS 115MM C-P100 (10 PCS.) | 1        |                    |
| 611      | 314105   | SANDING DISCS 115MM C-P120 (10 PCS.) | 1        |                    |
| * 612    | 937826Z  | WASHER NUT                           | 1        |                    |
| * 612    | 938318   | WASHER NUT                           | 1        | FOR USA,CAN        |
| * 613    | 937825Z  | RUBBER PAD                           | 1        |                    |
| * 613    | 938317   | RUBBER PAD                           | 1        | FOR USA,CAN        |
| * 614    | 332785   | WHEEL GUARD (FOR CUTTING)            | 1        | EXCEPT FOR USA,CAN |
|          |          |                                      |          |                    |
|          |          |                                      |          |                    |
|          |          |                                      |          |                    |
|          |          |                                      |          |                    |
|          |          |                                      |          |                    |
|          |          |                                      |          |                    |
|          |          |                                      |          |                    |
|          |          |                                      |          |                    |
|          |          |                                      |          |                    |
|          |          |                                      |          |                    |
|          |          |                                      |          |                    |
|          |          |                                      |          |                    |