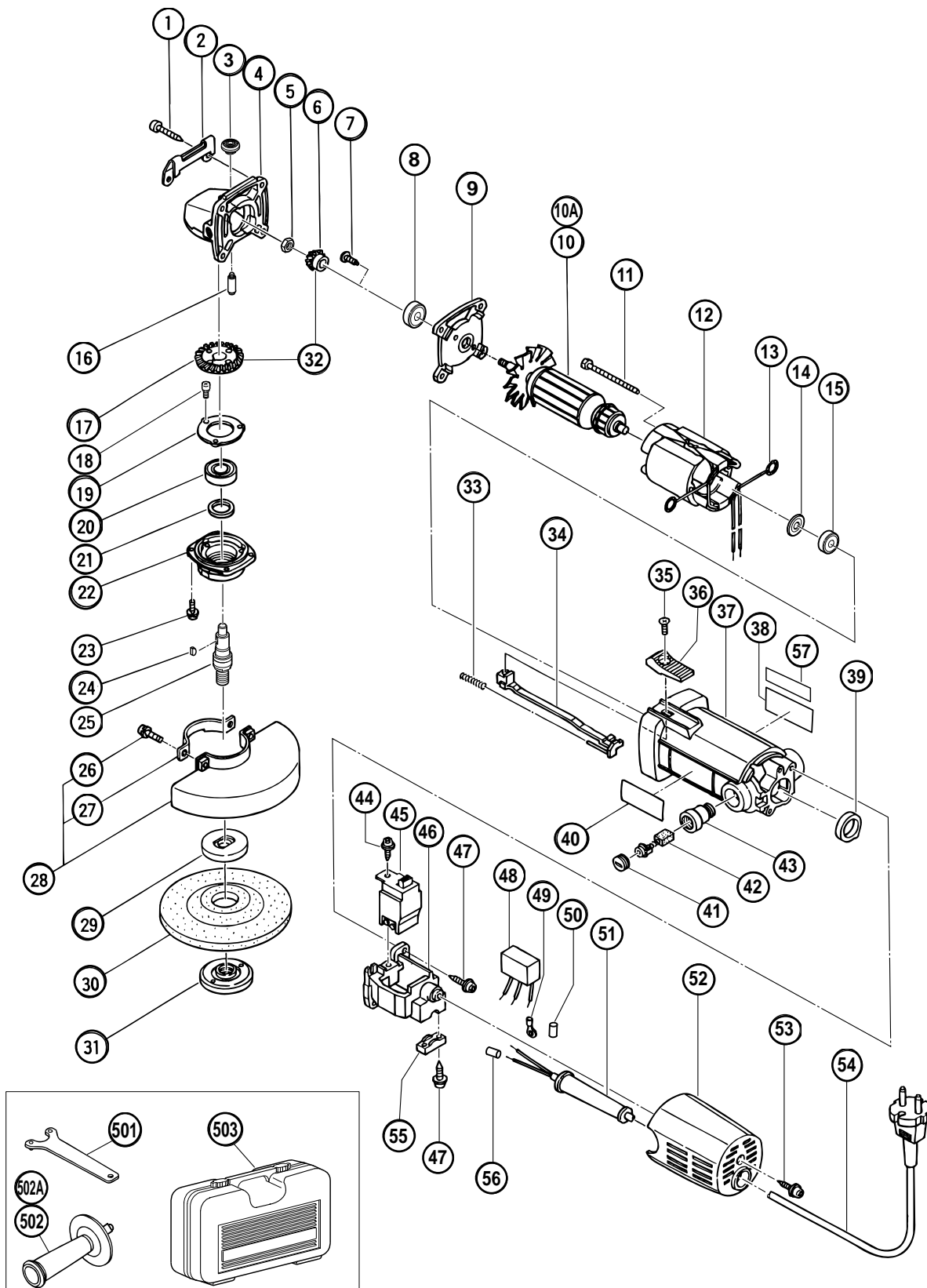


## ELECTRIC TOOL PARTS LIST

■ DISC GRINDER  
Model G 12SR

2000・9・29  
(E2)



**PARTS**

G 12SR

ITEM NO.	CODE NO.	DESCRIPTION	NO. USED	REMARKS
1	937-807	TAPPING SCREW D5X25	4	
2	302-149	GUARD PLATE	1	
3	301-944	PUSHING BUTTON	1	
4	314-125	GEAR COVER ASS'Y	1	INCLUD.3,16
5	301-941	SPECIAL NUT M7	1	
6	301-939	PINION	1	
7	314-430	SLOTTED HD. SCREW (SEAL LOCK) M4X10	2	
8	608-VVM	BALL BEARING 608VVC2PS2L	1	
9	301-935	INNER COVER	1	
* 10	360-163E	ARMATURE 220V-230V	1	
* 10	360-163F	ARMATURE 230V-240V	1	FOR AUS
* 10A	360-163U	ARMATURE ASS'Y 110V-115V	1	INCLUD.8,14,15
11	982-021	HEX. HD. TAPPING SCREW D4X70	2	
* 12	340-187G	STATOR ASS'Y 110V	1	INCLUD.13 FOR GBR
* 12	340-187H	STATOR ASS'Y 220V-230V	1	INCLUD.13 FOR NZL,SAF,EUROPE
* 12	340-187J	STATOR ASS'Y 240V	1	INCLUD.13
* 12	340-187E	STATOR ASS'Y 220V	1	INCLUD.13
* 12	340-187K	STATOR ASS'Y 110V-115V	1	INCLUD.13
13	931-867	BRUSH TERMINAL	2	
14	980-865	WASHER (A)	1	
15	626-VVM	BALL BEARING 626VVC2PS2L	1	
16	301-943	LOCK PIN	1	
17	301-940	GEAR	1	
18	987-201	SEAL LOCK SCREW (W/SP. WASHER) M4X10	3	
19	938-058	BEARING COVER (B)	1	
20	600-1VV	BALL BEARING 6001VVCMP2L	1	
21	301-946	FELT PACKING	1	
22	301-947	PACKING GLAND	1	
23	987-203	SEAL LOCK SCREW (W/SP. WASHER) M4X12	4	
24	940-220	WOODRUFF KEY 2.5X8	1	
* 25	302-059	SPINDLE	1	
* 25	302-060	SPINDLE	1	FOR USA,CAN
26	308-386	MACHINE SCREW (W/SP. WASHER) M5X16(BLACK)	2	
27	301-949	SET PLATE	1	
28	315-492	WHEEL GUARD ASS'Y	1	INCLUD.26,27
* 29	937-817Z	WHEEL WASHER	1	
* 29	319-373	WHEEL WASHER	1	FOR USA,CAN
* 30	316-821	D. C. WHEELS 115MM A36Q (25 PCS.)	1	FOR AUS
* 31	994-324	WHEEL NUT M14	1	
* 31	937-923P	WHEEL NUT 5/8"-11UNC	1	FOR USA,CAN
32	301-938	GEAR AND PINION ASS'Y	1	INCLUD.6,17
33	938-299	SPRING	1	
34	982-033	SLIDE BAR	1	
35	949-322	FLAT HD. SCREW M4X10 (10 PCS.)	1	
36	994-298	SLIDE KNOB (C)	1	
37	315-493	HOUSING ASS'Y	1	INCLUD.43
38		NAME PLATE	1	
39	307-010	BEARING BUSHING	1	
40		HITACHI LABEL	1	
41	937-847	BRUSH CAP	2	
42	999-021	CARBON BRUSH (1 PAIR)	2	

\* : ALTERNATIVE PARTS

9 - 00



