

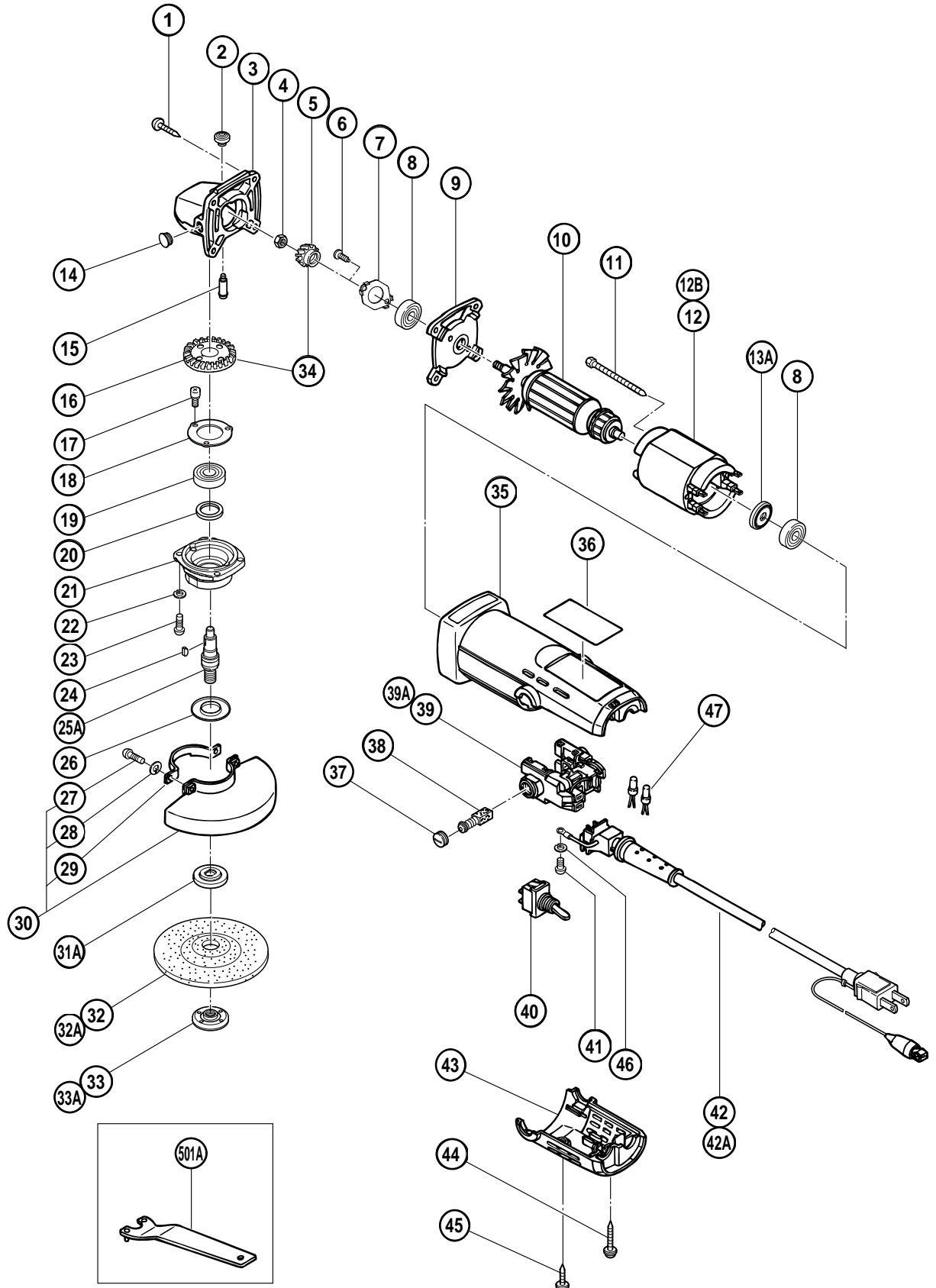
ELECTRIC TOOL PARTS LIST



DISC GRINDER Model G 10SF

2001•3•30

(E4)



PARTS

G 10SF

ITEM NO.	CODE NO.	DESCRIPTION	NO. USED	REMARKS
1	937-807	TAPPING SCREW D5X25	4	
2	301-944	PUSHING BUTTON	1	
3	303-078	GEAR COVER ASS'Y	1	INCLUD.2,15
4	301-941	SPECIAL NUT M7	1	
5	301-939	PINION	1	
6	301-936	SLOTTED HD. SCREW (SEAL LOCK) M4X10	2	
7	301-937	BEARING COVER	1	
8	608-VVM	BALL BEARING 608VVC2PS2L	2	
9	301-935	INNER COVER	1	
* 10	360-135C	ARMATURE 110V-115V	1	
* 10	360-135E	ARMATURE 220V-230V	1	
* 10	360-135F	ARMATURE 240V	1	
* 10	360-226	ARMATURE ASS'Y 100V	1	INCLUD.8,13A FOR KOR
11	963-712	HEX. HD. TAPPING SCREW D4X65	2	
* 12	340-428C	STATOR 110V-115V	1	
* 12	340-428F	STATOR 240V	1	
* 12	340-427	STATOR 100V	1	FOR KOR
* 12B	340-428E	STATOR 220V	1	
13A	311-435	DUST SEAL (A)	1	
14		CAP	1	
15	301-943	LOCK PIN	1	
16	301-940	GEAR	1	
17	997-263	SEAL LOCK SCREW (W/SP. WASHER) M4X10	3	
18	938-058	BEARING COVER (B)	1	
19	600-1VV	BALL BEARING 6001VVCMP2L	1	
20	301-946	FELT PACKING	1	
21	301-947	PACKING GLAND	1	
22	949-453	SPRING WASHER M4 (10 PCS.)	4	
23	949-217	MACHINE SCREW M4X12 (10 PCS.)	4	
24	302-047	WOODRUFF KEY	1	
25A	302-046	SPINDLE M10XP1.5	1	
26	301-945	FRINGER	1	
27	949-239	MACHINE SCREW M5X16 (10 PCS.)	2	
28	949-454	SPRING WASHER M5 (10 PCS.)	2	
29	301-949	SET PLATE	1	
30	301-948	WHEEL GUARD ASS'Y	1	INCLUD.27-29
* 31A	310-787	WHEEL WASHER	1	
* 31A	311-791	WHEEL WASHER	1	FOR KOR
* 32A	316-820	D. C. WHEELS 100MMX4T A36Q (25 PCS.)	1	(HOLE DIA.16MM)
* 32	939-640	D. C. WHEELS 100MMX4T A36Q (20 PCS.)	1	(HOLE DIA.15MM) FOR KOR
* 33A	314-437	WHEEL NUT (C)	1	
* 33	938-062	WHEEL NUT (B)	1	FOR KOR
34	301-938	GEAR AND PINION ASS'Y	1	INCLUD.5,16
35	303-076	HOUSING	1	
36		NAME PLATE	1	
37	936-551	BRUSH CAP	2	
38	999-021	CARBON BRUSH (1 PAIR)	2	
* 39	303-081	WIRING BLOCK	1	(TILL 9.1996 FOR INA,SIN,KUW)
* 39	310-289	WIRING BLOCK	1	FOR CHN
* 39A	313-246	WIRING BLOCK	1	SINCE 10.1996 FOR INA,SIN,KUW
40	303-082	SWITCH	1	

STANDARD ACCESSORIES

G 10SF

ITEM NO.	CODE NO.	DESCRIPTION	NO. USED	REMARKS	
501A	313-933	WRENCH	1		

OPTIONAL ACCESSORIES

ITEM NO.	CODE NO.	DESCRIPTION	NO. USED	REMARKS	
601	302-098	GUIDE BASE	1		
602	302-099	WHEEL GUARD FOR 100MM CUT-OFF WHEEL	1		
603	984-646	WHEEL NUT FOR 100MM CUT-OFF WHEEL	1		
604A	315-970	PLUG SET	1		
605	954-021	SIDE HANDLE	1		
606	306-162	DIAMOND WHEEL 106MM-D20 HOLE	1	WAVE SHAPE TYPE FOR DRY CUTTING	