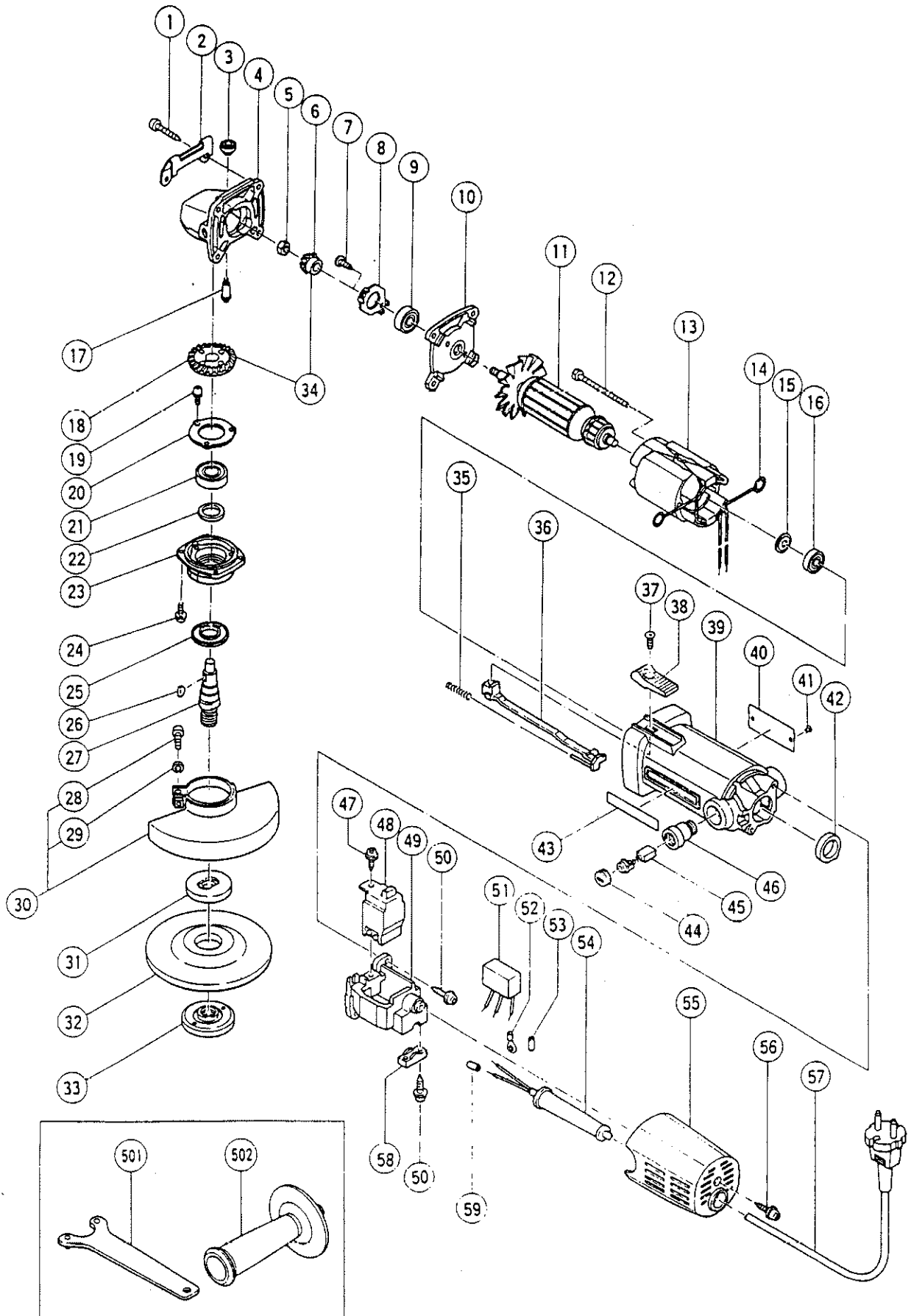


## ELECTRIC TOOL PARTS LIST

■ DISC GRINDER  
Model FG 12SA2

1993 · 3 · 30  
(E1)



ITEM NO.	CODE NO.	DESCRIPTION	NO. USED	REMARKS
1	937-807	TAPPING SCREW D5X25	4	
2	302-149	GUARD PLATE	1	
3	301-944	PUSHING BUTTON	1	
4	302-097	GEAR COVER ASS'Y	1	INCLUD.3,17
5	301-941	SPECIAL NUT M7	1	
6	301-939	PINION	1	
7	301-938	SLOTTED HD. SCREW (SEAL LOCK) M4X10	2	
8	301-937	BEARING COVER	1	
9	608-VVM	BALL BEARING 608VVMC2EPS2L	1	
10	301-935	INNER COVER	1	
11	380-183E	ARMATURE 220V - 230V	1	
11	380-183F	ARMATURE 230V - 240V	1	FOR SAF,GBR,AUS,NZL,NGU,KUW,SIN
12	982-021	HEX. HD. TAPPING SCREW D4X70	2	
13	340-187E	STATOR ASS'Y 220V	1	INCLUD.14
13	340-187F	STATOR ASS'Y 230V - 240V	1	INCLUD.14
13	340-187H	STATOR ASS'Y 220V - 230V	1	INCLUD.14 FOR ITA,FRG,FRA,HOL
13	340-187M	STATOR ASS'Y 230V - 240V	1	INCLUD.14 FOR NZL,SAF
13	340-187J	STATOR ASS'Y 230V - 240V	1	INCLUD.14 FOR GBR
14	931-867	BRUSH TERMINAL	2	
15	980-865	WASHER (A)	1	
16	626-VVM	BALL BEARING 626VVMC2ERPS2S	1	
17	301-943	LOCK PIN	1	
18	301-940	GEAR	1	
19	987-201	SEAL LOCK SCREW (W/SP. WASHER) M4X10	3	
20	938-058	BEARING COVER (B)	1	
21	600-1VV	BALL BEARING 6001VVCMP2L	1	
22	301-946	FELT PACKING	1	
23	302-286	PACKING GLAND	1	
24	987-203	SEAL LOCK SCREW (W/SP. WASHER) M4X12	4	
25	301-945	FRINGER	1	
26	940-220	WOODRUFF KEY 2.5X8	1	
27	302-059	SPINDLE	1	
28	949-241	MACHINE SCREW M5X20 (10 PCS.)	1	
29	949-454	SPRING WASHER M5 (10 PCS.)	1	
30	937-816Z	WHEEL GUARD (A) ASS'Y	1	INCLUD.28,29
31	937-817Z	WHEEL WASHER	1	
32	937-818Z	D. C. WHEELS 115MM A36Q (10 PCS.)	1	
33	994-324	WHEEL NUT M14	1	
34	301-938	GEAR PINION ASS'Y	1	INCLUD.6,18
35	938-299	SPRING	1	
36	982-033	SLIDE BAR	1	
37	949-323	FLAT HD. SCREW M4X12 (10 PCS.)	1	
38	994-298	SLIDE KNOB (C)	1	
39	998-340	HOUSING ASS'Y	1	INCLUD.48
40		NAME PLATE	1	
41	932-642	RIVET D2.5X2.8	2	
42	307-010	BEARING BUSHING	1	
43		HITACHI LABEL	1	
44	937-847	BRUSH CAP	2	
45	999-021	CARBON BRUSH (1 PAIR)	2	
46	937-846	BRUSH HOLDER	2	

\*: ALTERNATIVE PARTS

## PARTS

FG 12SA2

ITEM NO.	CODE NO.	DESCRIPTION	NO. USED	REMARKS
47	982 - 034	TAPPING SCREW (W/WASHER) D4X12	1	
48	980 - 778	SLIDE SWITCH (2P PILLAR TYPE)	1	
49	982 - 044	SWITCH HOLDER	1	
50	984 - 750	TAPPING SCREW (W/FLANGE) D4X16	4	
51	984 - 273	NOISE SUPPRESSOR	1	FOR HOL,FRA,FRG,ITA,SAF,GBR,NZL
52	980 - 063	TERMINAL	1	FOR NOISE SUPPRESSOR
53	981 - 373	TUBE (D)	2	FOR NOISE SUPPRESSOR
54	953 - 327	CORD ARMOR D8.8	1	
54	938 - 051	CORD ARMOR D10.1	1	
55	998 - 341	TAIL COVER	1	
56	984 - 750	TAPPING SCREW (W/FLANGE) D4X16	1	
57	500 - 201Z	CORD	1	(CORD ARMOR D10.1)
57	500 - 409Z	CORD	1	(CORD ARMOR D8.8) FOR INA,ITA,FRG,FRA, HOL
57	500 - 226Z	CORD	1	(CORD ARMOR D8.8) FOR NZL,NGU,AUS
57	500 - 421Z	CORD	1	(CORD ARMOR D8.8) FOR KUW,SIN
57	500 - 245Z	CORD	1	(CORD ARMOR D10.1) FOR SYR
57	971 - 675Z	CORD	1	(CORD ARMOR D8.8) FOR SAF
57	500 - 438Z	CORD	1	(CORD ARMOR D8.8) FOR GBR
58	960 - 268	CORD CLIP	1	
59	981 - 373	TUBE (D)	2	FOR CORD

## STANDARD ACCESSORIES

ITEM NO.	CODE NO.	DESCRIPTION	NO. USED	REMARKS
501	938 - 332Z	WRENCH	1	
502	302 - 142	SIDE HANDLE	1	

\* : ALTERNATIVE PARTS