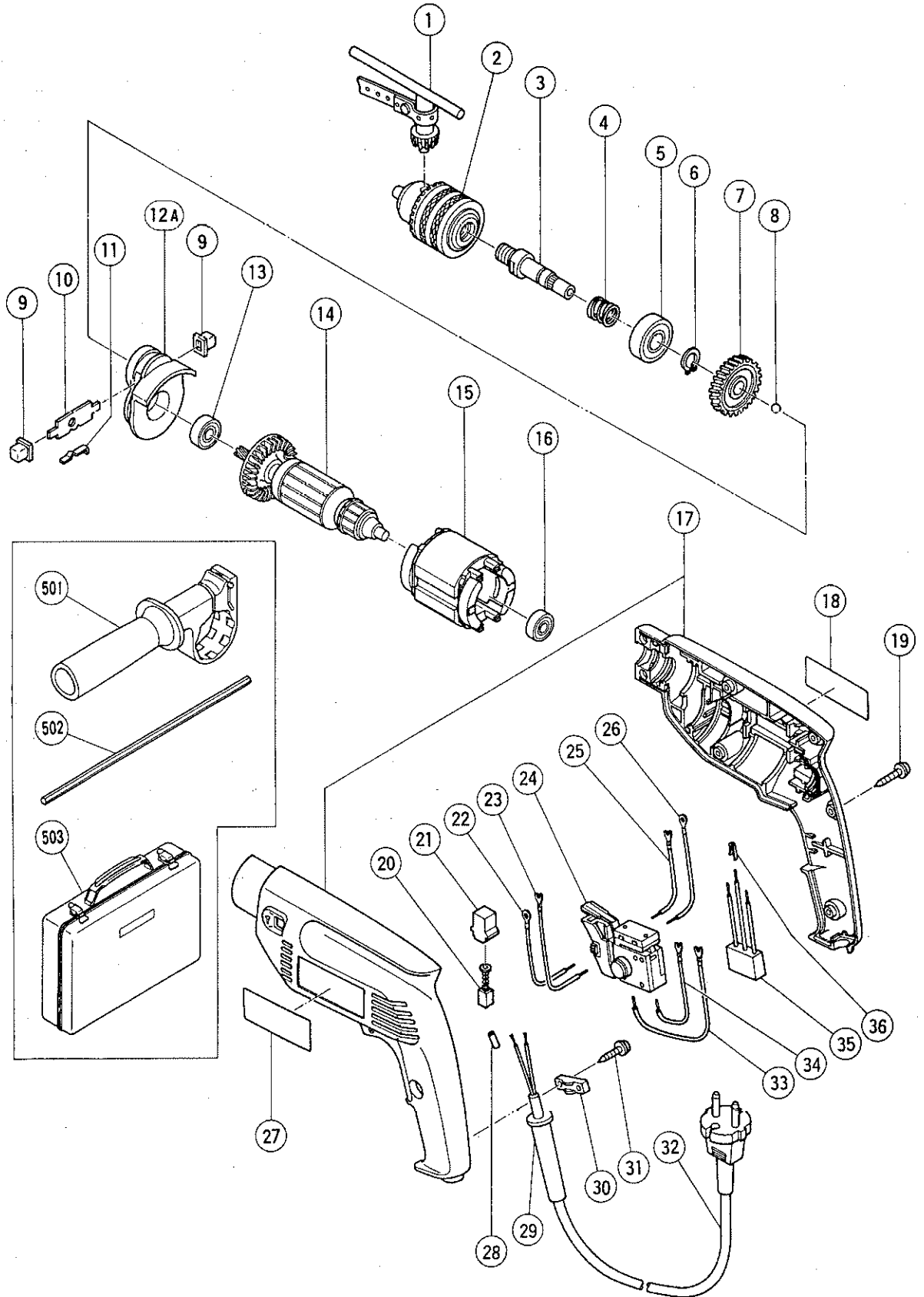


## ELECTRIC TOOL PARTS LIST

■ IMPACT DRILL  
Model FDV 12V

1992 · 8 · 31  
(E2)



## PARTS

FDV 12V

ITEM NO.	CODE NO.	DESCRIPTION	NO. USED	REMARKS	
*	1	987-575	CHUCK WRENCH FOR 10VLB - D	1	EXCEPT FOR GBR
*	2		DRILL CHUCK 10VLB - D	1	INCLUD.1 EXCEPT FOR GBR
	3	303-650	SPINDLE	1	
	4	303-651	SPRING	1	
	5	600-1VV	BALL BEARING 6001VVCMP2L	1	
	6	939-542	RETAINING RING FOR D12 SHAFT (10 PCS.)	1	
	7	987-073	GEAR	1	
	8	959-149	STEEL BALL D4.76 (10 PCS.)	1	
	9	963-225	CHANGE KNOB	2	
	10	963-224	CHANGE PLATE	1	
	11	963-226	SPRING (A)	1	
	12A	305-088	HOLDER	1	
	13	608-VVM	BALL BEARING 608VVMC2EPS2L	1	
*	14	987-090C	ARMATURE 110V - 127V	1	
*	14	987-090E	ARMATURE 220V - 230V	1	
*	14	987-090F	ARMATURE 230V - 240V	1	FOR SIN,KUW,NGU,NZL,AUS,GBR,SAF
*	14	360-217	ARMATURE 100V	1	FOR KOR
*	15	340-228C	STATOR 110V - 115V	1	
*	15	340-228E	STATOR 220V	1	
*	15	340-228F	STATOR 230V - 240V	1	
*	15	340-227	STATOR 100V	1	FOR KOR
	16	626-VVM	BALL BEARING 626VVMC2ERPS2S	1	
	17	303-717	HOUSING (A),(B) SET	1	
	18		NAME PLATE	1	
	19	302-086	TAPPING SCREW (W/FLANGE) D4X20 (BLACK)	7	
	20	999-041	CARBON BRUSH (1 PAIR)	2	
	21	930-483	BRUSH HOLDER	2	
*	22	303-661	INTERNAL WIRE (B)	1	
*	22	303-666	CHOKE COIL	1	FOR NZL,GBR,SAF,ITA,FRG,HOL,DEN,FIN, SWE,AUT,NOR,SUI
	23	303-656	INTERNAL WIRE (C)	1	
*	24	303-653	SWITCH (L) (2P PILLAR TYPE) W/LOCK	1	100V - 127V
*	24	303-663	SWITCH (M) (2P PILLAR TYPE) W/LOCK	1	220V - 240V
	25	303-657	INTERNAL WIRE (D)	1	
*	26	303-660	INTERNAL WIRE (A)	1	
*	26	303-665	CHOKE COIL	1	FOR NZL,GBR,SAF,ITA,FRG,HOL,DEN,FIN, SWE,AUT,NOR,SUI
	27		HITACHI LABEL	1	
*	28	981-373	TUBE (D)	2	FOR CORD
*	29	303-662	CORD ARMOR D8.8	1	
*	29	980-193	CORD ARMOR D10.2	1	
	30	960-266	CORD CLIP	1	
	31	984-750	TAPPING SCREW (W/FLANGE) D4X16	2	
*	32	500-409Z	CORD	1	(CORD ARMOR D8.8)
*	32	500-421Z	CORD	1	(CORD ARMOR D8.8) FOR SIN,SAU,KUW
*	32	500-226Z	CORD	1	(CORD ARMOR D8.8) FOR NGU,NZL,AUS
*	32	303-667	CORD	1	(W/CORD ARMOR) FOR TPE,THA,KOR
*	32	500-231Z	CORD	1	(CORD ARMOR D8.8) FOR GBR,SAF
*	32	500-240Z	CORD	1	(CORD ARMOR D8.8) FOR USA,CAN
*	32	500-395Z	CORD	1	(CORD ARMOR D8.8) FOR SUI
*	32	500-245Z	CORD	1	(CORD ARMOR D10.2) FOR SYR

\*: ALTERNATIVE PARTS



