

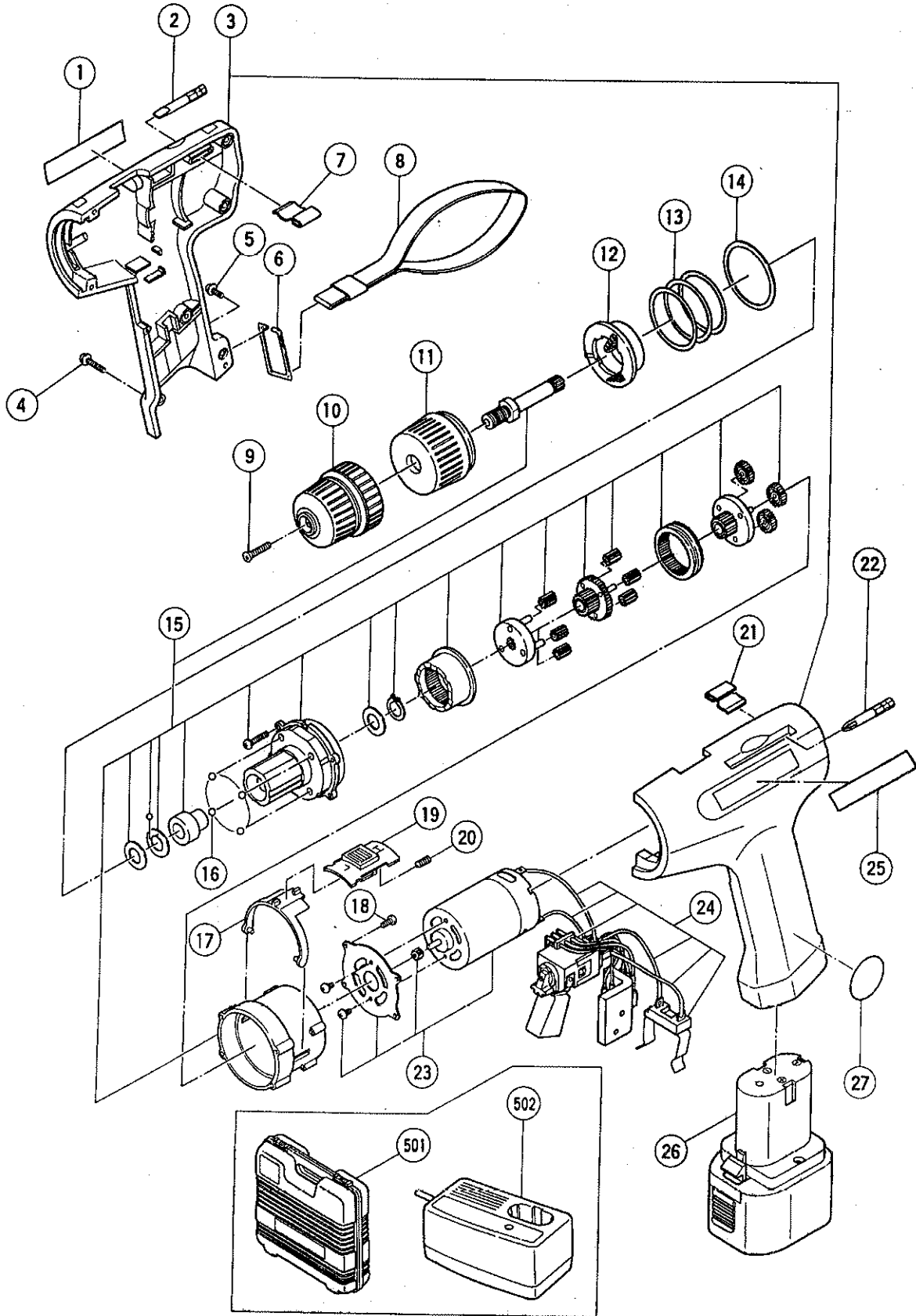
HITACHI

LIST NO. E880

ELECTRIC TOOL PARTS LIST

■ CORDLESS DRIVER DRILL
Model FDS 10DV

1994 • 8 • 31
(E1)



PARTS

FDS 10DV

| ITEM NO. | CODE NO. | DESCRIPTION | NO. USED | REMARKS |
|----------|--------------------|---|----------|---------|
| 1 | | NAME PLATE | 1 | |
| 2 | 308-511 | - DRIVER BIT 4MMX50L | 1 | |
| 3 | 308-618 | HOUSING (A).(B) SET | 1 | |
| 4 | 309-614 | TAPPING SCREW (W/FLANGE) D3X14 | 6 | |
| 5 | 309-615 | TAPPING SCREW (W/FLANGE) D3X6 | 1 | |
| 6 | 309-616 | FOOK | 1 | |
| 7 | 309-611 | BIT HOLDER (B) | 1 | |
| 8 | 309-617 | STRAP | 1 | |
| 9 | 980-836 | FLAT HD. SCREW (LEFT HAND) M5X20 | 1 | |
| 10 | 303-915 | DRILL CHUCK 10TLRA - N (W/O CHUCK HANDLE) | 1 | 301553 |
| 11 | 309-599 | CAP | 1 | |
| 12 | 309-600 | SPRING HOLDER | 1 | |
| 13 | 309-601 | SPRING | 1 | |
| 14 | 309-602 | THRUST PLATE | 1 | |
| 15 | 309-604 | SPINDLE AND GEAR SET | 1 | |
| 16 | 309-603 | STEEL BALL | 4 | |
| 17 | 309-607 | SHIFT ARM | 1 | |
| 18 | 309-608 | TAPPING SCREW D3X8 | 4 | |
| 19 | 309-608 | SHIFT KNOB | 1 | |
| 20 | 309-609 | SHIFT SPRING | 1 | |
| 21 | 309-612 | BIT HOLDER (A) | 1 | |
| 22 | 308-510 | +DRIVER BIT NO.2X50L | 1 | |
| 23 | 309-605 | MOTOR | 1 | |
| 24 | 309-625 | SWITCH (1P SOLDER TYPE) 310155 | 1 | |
| 25 | | HITACHI LABEL | 1 | |
| 26 | 309-365 | BATTERY FEB 7 | 1 | |
| 27 | | MARK PLATE | 1 | |
| | | | | |
| | | | | |
| | | | | |
| | | | | |
| | | | | |
| | | | | |
| | | | | |
| | | | | |
| | | | | |
| | | | | |
| | | | | |
| | | | | |
| | | | | |
| | | | | |
| | | | | |
| | | | | |
| | | | | |
| | | | | |
| | | | | |
| | | | | |
| | | | | |
| | | | | |

STANDARD ACCESSORIES

| ITEM NO. | CODE NO. | DESCRIPTION | NO. USED | REMARKS |
|----------|----------|------------------------|----------|---------|
| 501 | 309-928 | CASE | 1 | |
| 502 | | CHARGER (MODEL UC 7SC) | 1 | |

*: ALTERNATIVE PARTS

Printed in Japan

B-94