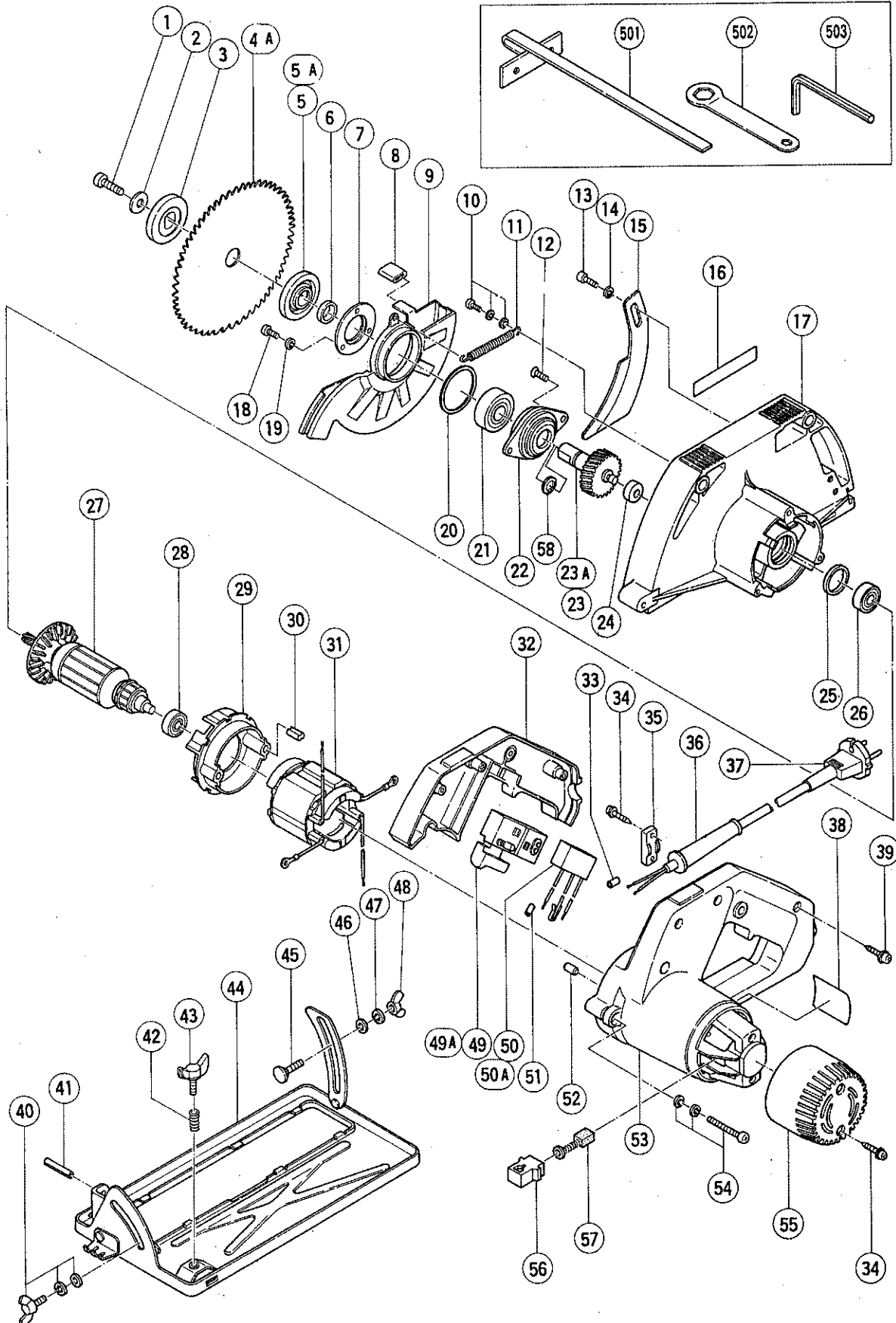


ELECTRIC TOOL PARTS LIST

■ CIRCULAR SAW
Model FC5SA1

1988.3.20
FC5SA1(E2)



PARTS

FC5SA1 (E2)

Item No.	Code No.	Part Name	Q'ty	Remarks
1	963716Z	Hexagon Socket Hd. Bolt M7 x 17.5)	1	
2	940845	Washer	1	
3	957064	Washer (B)	1	
4	—	Saw Blade	1	See alternative parts
5	—	Washer (A) Ass'y	1	See alternative parts
6	961366	Distance Piece	1	
7	941049	Bearing Cap	1	
8	963718Z	Rubber Bushing	1	
9	—	Safety Cover	1	See alternative parts
10	986723	Machine Screw M4 x 8	1	w/Washer, Spring Lock Washer
11	957062	Return Spring	1	
12	949322	Flat Hd. Screw M4 x 10	2	(10 pcs.)
13	—	Hexagon Socket Hd. Bolt M6 x 16	2	See alternative parts
14	—	Super Lock Washer	2	See alternative parts
15	—	Riving Knife	1	See alternative parts
16	957561	HITACHI Label	1	
17	963715Z	Gear Cover Ass'y	1	includ. 24, 25
18	949203	Machine Screw M3 x 8	3	(10 pcs.)
19	949451	Spring Lock Washer	3	for M3 (10 pcs.)
20	963732Z	Thrust Washer	1	
21	939494	Ball Bearing (6202VVCM)	1	
22	941048	Bearing Holder	1	
23	—	Spindle Gear	1	See alternative parts
24	963803	Metal	1	
25	957754	Rubber Ring	1	
26	956907	Ball Bearing (629VVC2)	1	
27	—	Armature	1	See alternative parts
28	939291	Ball Bearing (608VVC2)	1	
29	994850	Fan Guide	1	
30	994343	Rubber Bushing	2	
31	—	Stator	1	See alternative parts
32	991745	Handle Cover	1	Color: Moss Green
33	—	Tube (D)	2	See alternative parts
34	984750	Tapping Screw D4 x 16	4	w/Flange
35	960266	Cord Clip	1	
36	—	Cord Armor	1	See alternative parts
37	—	Cord	1	See alternative parts
38	—	Name Plate	1	
39	982095	Tapping Screw D4 x 20	3	w/Washer
40	990316	Wing Bolt M6 x 15	1	s/Spring Lock Washer, Bolt Washer
41	949515	Roll Pin D6 x 30	1	(10 pcs.)
42	941056	Spring	1	
43	941055	Wing Bolt M6	1	
44	963719Z	Base Ass'y	1	includ. 40, 42, 43
45	942808	Special Bolt M6	1	
46	949425	Washer	1	for M6 (10 pcs.)
47	949455	Spring Lock Washer	1	for M6 (10 pcs.)
48	949313	Wing Nut M6	1	
49	—	Switch	1	See alternative parts
50	—	Noise Suppressor (B)	1	See alternative parts
51	—	Tube (D)	2	See alternative parts
52	931701	Bearing Lock	1	
53	—	Housing	1	See alternative parts

PARTS

FC5SA1 (E2)

Item No.	Code No.	Part Name	Q'ty	Remarks
54	991740	Machine Screw M5 x 40	3	w/Washer, Spring Lock Washer
55	963714Z	Tail Cover	1	
56	930483	Brush Holder	2	
57	999041	Carbon Brush	2	(2 pcs.)
58	—	Ring	1	See alternative parts

ALTERNATIVE PARTS

Item No.	Code No.	Part Name	Q'ty	Remarks
4A	879400	Combination Saw Blade 150 mm	1	Inner Dia.: 16 mm
	879401	Carbide-Tipped Saw Blade 150 mm	1	Inner Dia.: 20mm for U.K., S. Africa, Italy, F.R. Germany, Belgium, Nether- lands, Denmark, Finland, Sweden, Austria
	879408	Combination Saw Blade 150 mm	1	Inner Dia.: 16 mm (Finishing Blade)
	879409	Combination Saw Blade 150 mm	1	Inner Dia.: 20 mm (Finishing Blade)
	879392	Carbide-Tipped Saw Blade 150 mm	1	Inner Dia.: 16 mm
	879393	Carbide-Tipped Saw Blade 150 mm	1	Inner Dia.: 20 mm
	994856	Carbide-Tipped Saw Blade 150 mm	1	Inner Dia.: 16 mm for France, Switzerland
5	957076	Washer (A) Ass'y	1	includ. 6
5A	990099	Washer (A)	1	for France, Switzerland, includ. 6
9	963734	Safety Cover	1	for Product w/o Riving Knife
	963717Z	Safety Cover	1	for Product w/Riving Knife
13	949755	Hexagon Socket Hd. Bolt M6 x 16	2	for Product w/Riving Knife (10 pcs.)
14	948167	Super Lock Washer	2	for M6 for Product w/Riving Knife
15	963728Z	Riving Knife	1	for Product w/Riving Knife
23	941060	Spindle Gear	1	
23A	994855	Spindle Gear	1	for France, Switzerland
27	360034C	Armature 110V~127V	1	
	360034E	Armature 220V	1	
	360034F	Armature 230V~240V	1	
31	340040C	Stator 110V~127V	1	
	340040H	Stator 220V	1	
	340040J	Stator 230V~240V	1	
33	981373	Tube (D)	2	for Cord
36	953327	Cord Armor D8.8	1	
	938051	Cord Armor D10.1	1	
37	500201Z	Cord 110V~240V	1	(Cord Armor D10.1)
	500234Z	Cord 110V~220V	1	for Surinam, Indonesia, Italy, F.R. Germany, France (Cord Armor D8.8)
	500245Z	Cord 110V~220V	1	for Syria (Cord Armor D10.1)
	500247Z	Cord 220V	1	for Netherlands, Denmark, Finland, Austria, Sweden (Cord Armor D10.1)
	500248Z	Cord 220V	1	for Switzerland (Cord Armor D10.1)

