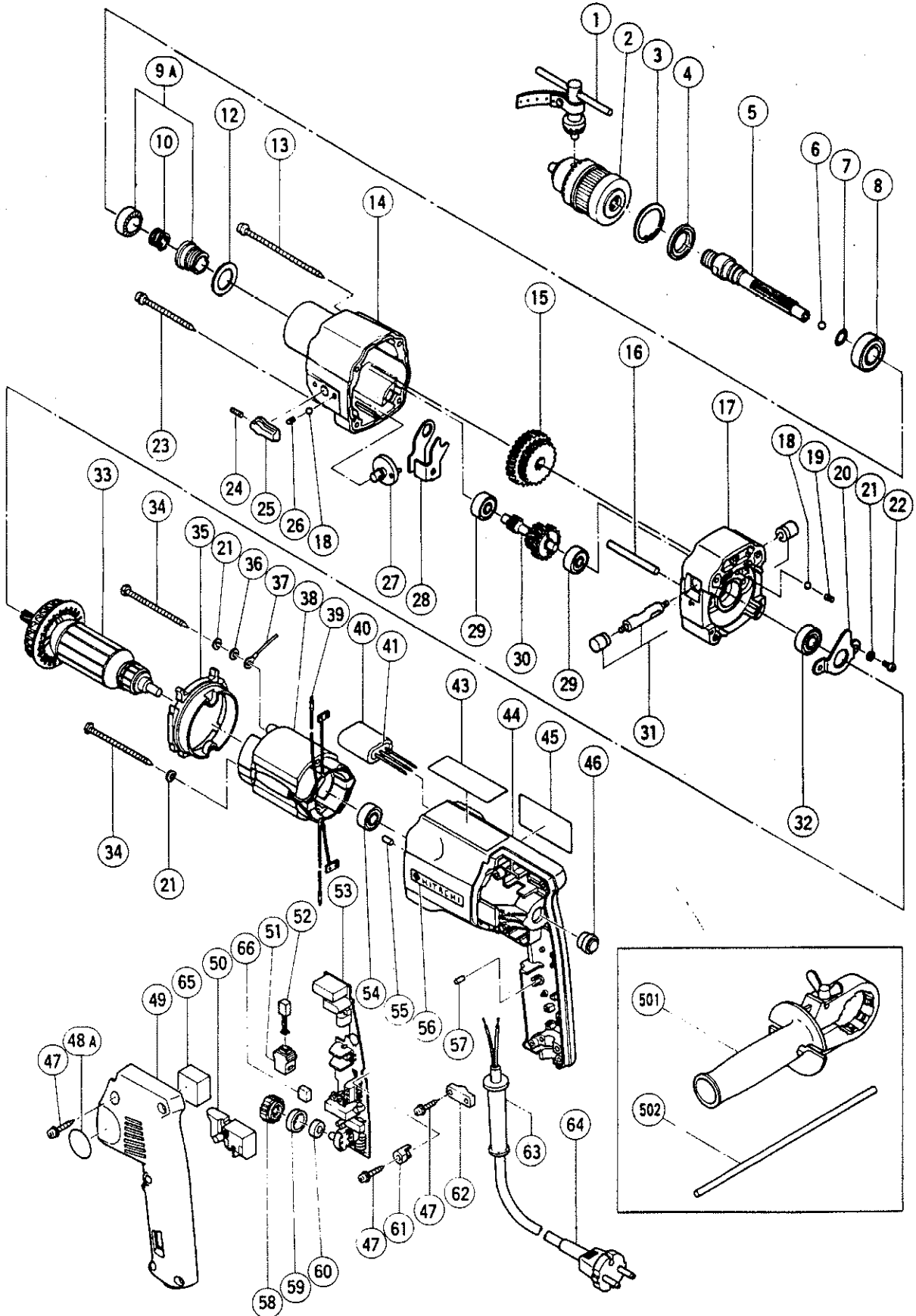


ELECTRIC TOOL PARTS LIST

■ IMPACT DRILL
Model DV 20V1

1991 · 5 · 20
(E3)



PARTS

DV 20V1

ITEM NO.	CODE NO.	DESCRIPTION	NO. USED	REMARKS
1	930-515	CHUCK WRENCH 10G	1	
2	950-272	DRILL CHUCK 13VLA	1	INCLUD.1
3	948-001	RETAINING RING FOR D32 HOLE	1	
4	971-854	DUST SEAL	1	
5	984-100	SPINDLE	1	
6	959-154	STEEL BALL D5.558 (10 PCS.)	1	
7	875-838	O - RING (S - 12)	1	
8	600-2DD	BALL BEARING 6002DDUCMPS2S	1	
9A	997-497	RATCHET (A).(B) SET	1	
10	984-101	SPRING (A)	1	
12	984-118	WASHER (B)	1	
13	984-108	TAPPING SCREW (W/SP. WASHER) D5X95	2	
14	984-096	GEAR COVER	1	
15	984-102	GEAR	1	
16	984-104	PIN D5	1	
17	984-121	INNER COVER	1	
18	959-155	STEEL BALL D3.97 (10 PCS.)	2	
19	984-123	SPRING (D)	1	
20	984-093	BEARING HOLDER	1	
21	949-453	SPRING WASHER M4 (10 PCS.)	4	
22	949-215	MACHINE SCREW M4X8 (10 PCS.)	2	
23	981-561	TAPPING SCREW (W/SP. WASHER) D5X60	2	
24	984-098	HEX. SOCKET SET SCREW M4X12	1	
25	984-097	SHIFT LEVER	1	
26	981-328	SPRING (H)	1	
27	984-099	SHIFT ROD	1	
28	984-103	SHIFT ARM	1	
29	608-VVM	BALL BEARING 608VVMC2EPS2L	2	
30	984-105	SECOND PINION	1	
31	984-122	CHANGE SHAFT	1	
32	629-VVM	BALL BEARING 629VVMC2EPS2L	1	
33	984-194E	ARMATURE 220V	1	
33	984-194F	ARMATURE 230V - 240V	1	
33	984-194G	ARMATURE 220V	1	FOR FRA,HOL,DEN,FIN,SWE,AUT,NOR
33	984-194H	ARMATURE 240V	1	FOR GBR
34	982-021	HEX. HD. TAPPING SCREW D4X70	2	
35	984-091	FAN GUIDE	1	
36	949-423	WASHER M4 (10 PCS.)	1	
37	986-901	INTERNAL WIRE	1	
38	986-902E	STATOR ASS'Y 220V - 230V	1	INCLUD.39
38	986-902F	STATOR ASS'Y 240V	1	INCLUD.39
38	986-902G	STATOR ASS'Y 220V - 230V	1	INCLUD.39 FOR NZL,FRG,FRA,HOL,DEN,FIN, SWE,AUT,NOR,SUI
38	986-902H	STATOR ASS'Y 240V	1	INCLUD.39 FOR GBR
39	986-910	CONNECTOR	2	
40	986-909	SUPPORT	1	FOR SUI
41	986-908	NOISE SUPPRESSOR	1	FOR SUI
43	986-912	SETTING TABLE (ENGLISH)	1	
43	986-911	SETTING TABLE (GERMAN)	1	
44	986-900	HOUSING	1	
45		NAME PLATE	1	

*: ALTERNATIVE PARTS

05 - 91

PARTS

DV 20V1

ITEM NO.	CODE NO.	DESCRIPTION	NO. USED	REMARKS
46	984-192	MAGNET	1	
47	930-448	TAPPING SCREW (W/WASHER) D4X16	8	
48A	986-914	MARK PLATE	1	
49	984-107Z	HANDLE COVER	1	
50	957-747	SWITCH (A) (1P SCREW TYPE) W/LOCK	1	
51	955-203	BRUSH HOLDER	2	
52	999-080	CARBON BRUSH (AUTO STOP TYPE) (1 PAIR)	2	
* 53	986-903	PRINTED CIRCUIT BOARD ASS'Y	1	INCLUD.50,58 - 60
* 53	986-905	PRINTED CIRCUIT BOARD ASS'Y	1	INCLUD.50,58 - 60 FOR SUI
54	608-VVM	BALL BEARING 608VVMC2EPS2L	1	
55	946-382	BEARING LOCK	1	
56	957-581	HITACHI LABEL	1	
57	931-701	BEARING LOCK	4	
58	986-904	DIAL	1	
59	986-906	PACKING	1	
60	986-907	PACKING	1	
61	984-106	HOLDER PIECE	1	
62	960-266	CORD CLIP	1	
* 63	953-327	CORD ARMOR D8.8	1	
* 63	938-051	CORD ARMOR D10.1	1	
* 64	500-212Z	CORD	1	(CORD ARMOR D8.8) FOR CHN
* 64	500-223Z	CORD	1	(CORD ARMOR D10.1) FOR KUW
* 64	500-226Z	CORD	1	(CORD ARMOR D8.8) FOR NZL,AUS
* 64	500-231Z	CORD	1	(CORD ARMOR D8.8) FOR GBR
* 64	500-234Z	CORD	1	(CORD ARMOR D8.8)FOR INA,MLT,FRA,ITA, FRG
* 64	500-245Z	CORD	1	(CORD ARMOR D10.1) FOR SYR
* 64	500-247Z	CORD	1	(CORD ARMOR D10.1) FOR HOL,NOR,FIN, SWE,AUT
* 64	500-248Z	CORD	1	(CORD ARMOR D10.1) FOR SUI
65	985-175	SUPPORT	1	
66	984-198	PACKING	1	

STANDARD ACCESSORIES

ITEM NO.	CODE NO.	DESCRIPTION	NO. USED	REMARKS
501	984-119	SIDE HANDLE	1	
502	971-677	STOPPER	1	

