

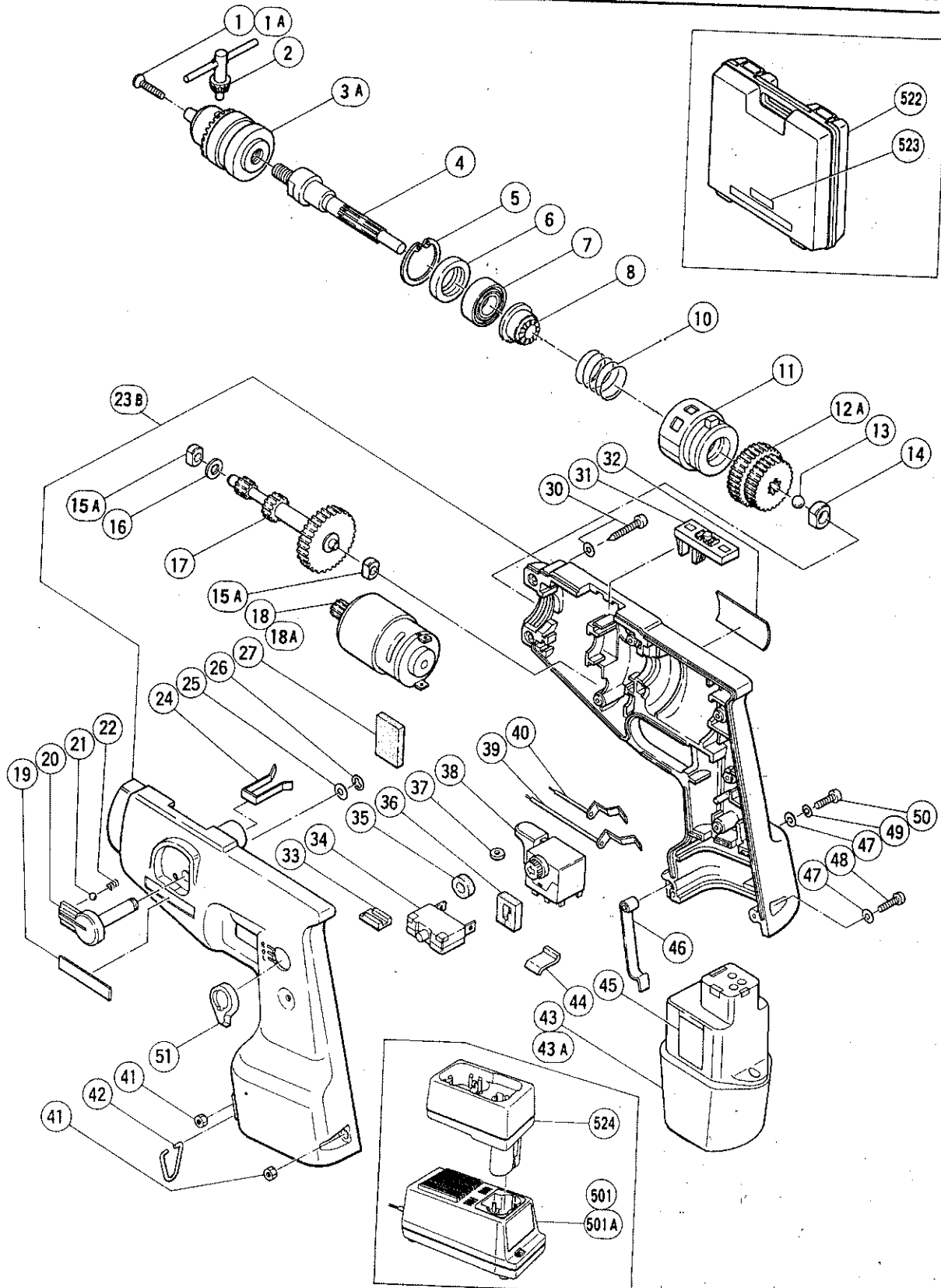
ELECTRIC TOOL PARTS LIST

■ CORDLESS IMPACT DRILL

1989-10-30

Model DV 10D

DV 10D(E3)



PARTS

DV 10D

ITEM NO.	CODE NO.	DESCRIPTION	NO. USED	REMARKS
1	980-836	FLAT HD. SCREW (LEFT HAND) M5X20	1	TILL 8.1986
1A	992-077	FLAT HD. SCREW (LEFT HAND) M5X17	1	SINCE 9.1986
2	980-057	CHUCK WRENCH 10TL2	1	
3A	950-292	DRILL CHUCK 10TLRA	1	INCLUD.2
4	982-445	SPINDLE	1	
5	948-001	RETAINING RING FOR D32 HOLE	1	
6	971-654	DUST SEAL	1	
7	600-2DD	BALL BEARING 6002DDUCMPS2S	1	
8	992-742	RATCHET (B)	1	
10	982-450	SPRING (A)	1	
11	992-741	RATCHET HOLDER	1	
12A	982-444	FINAL GEAR	1	
13	959-154	STEEL BALL D6.556 (10 PCS.)	1	
14	982-446	METAL D9X10	1	
15A	997-752	METAL	2	
16	949-425	WASHER M6 (10 PCS.)	1	
17	982-443	SECOND PINION	1	
18	992-740	MOTOR	1	TILL 2.1987
18A	992-747	MOTOR	1	SINCE 3.1987
19	950-565	HITACHI LABEL	1	
20	982-452	CHANGE LEVER	1	
21	959-155	STEEL BALL D3.97 (10 PCS.)	1	
22	982-454	SPRING (C)	1	
23B	992-748	HOUSING (A),(B) SET	1	INCLUD.27
24	980-837	KEY HOLDER	1	
25	982-453	WASHER	1	TILL 2.1987
26	673-489	RETAINING RING (E-TYPE) FOR D5 SHAFT	1	
27	980-572	CUSHION (A)	1	
30	982-095	TAPPING SCREW (W/WASHER) D4X20	6	
31	982-455	SHIFT KNOB	1	
32		NAME PLATE	1	
33	982-462	PACKING	2	TILL 2.1987
34	992-746	CIRCUIT BREAKER	1	
35	957-097	PUSHING HOLDER	1	
36	982-457	SWITCH SEAL	1	
37	982-461	SEAL	1	
38	982-456	SWITCH (2P SOLDER TYPE) W/O LOCK	1	302413
39	982-458	TERMINAL	1	
40	982-459	TERMINAL	1	
41	949-554	NUT M4 (10 PCS.)	2	
42	980-838	HOOK	1	
* 43	982-463Z	BATTERY B-3 (W/ENGLISH N.P.)	1	
* 43	982-464Z	BATTERY B-3 (W/GERMAN N.P.)	1	FOR FRG
* 43	982-465Z	BATTERY B-3 (W/FRENCH N.P.)	1	FOR FRA
* 43	982-467Z	BATTERY B-3 (W/ENGLISH N.P.)	1	FOR USA,CAN
* 43A	982-471	BATTERY B-3 (W/GERMAN N.P.)	1	FOR SUI
44	982-466	HOLDER SPRING	2	
45		BATTERY NAME PLATE	1	
46	980-581	BATTERY CASE HOLDER	1	
47	949-423	WASHER M4 (10 PCS.)	2	
48	949-219	MACHINE SCREW M4X16 (10 PCS.)	1	
49	949-453	SPRING WASHER M4 (10 PCS.)	1	

* : ALTERNATIVE PARTS

10-89

