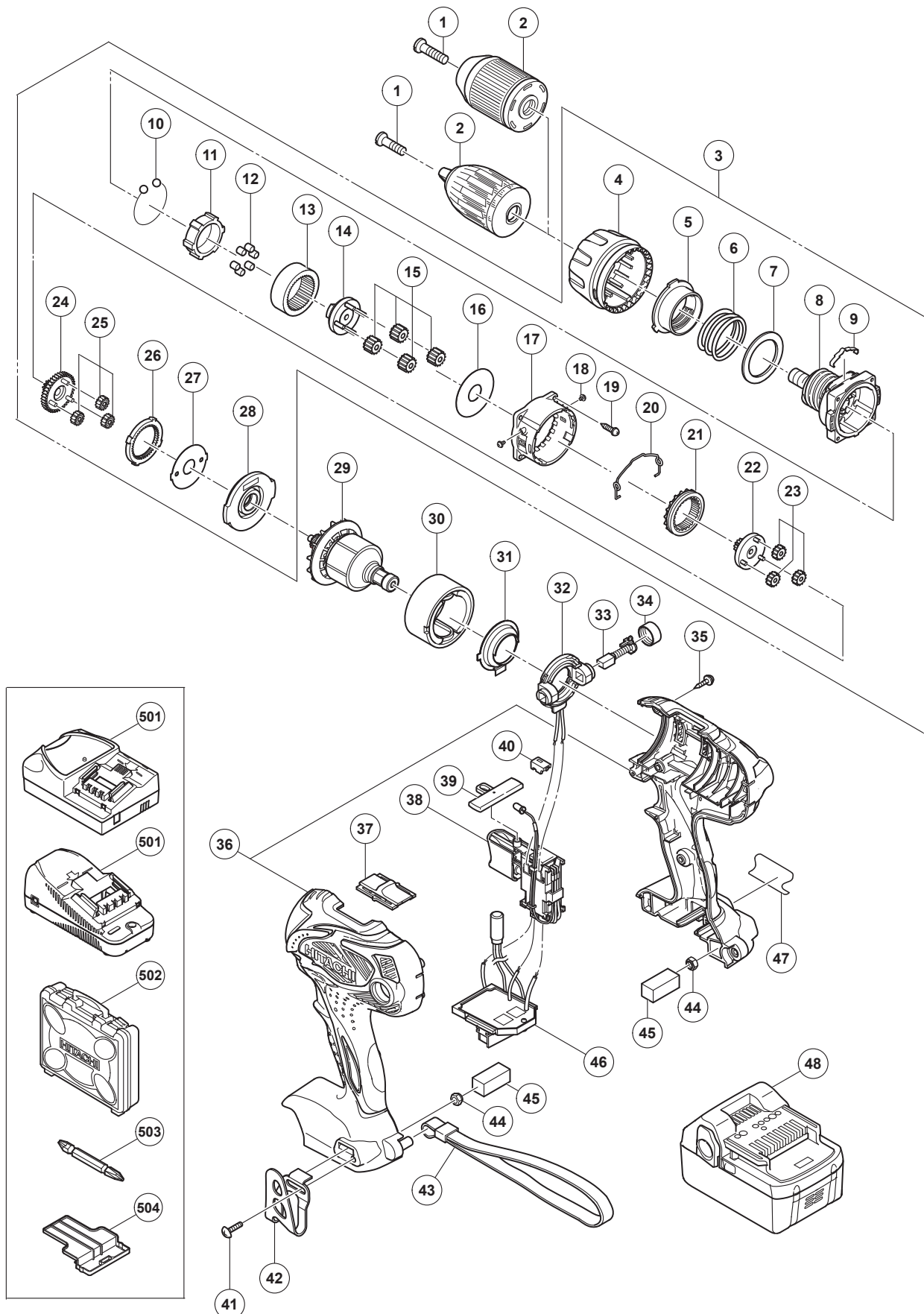


## ELECTRIC TOOL PARTS LIST

**CORDLESS DRIVER DRILL**  
**Model DS 18DSAL**

**2009·1·22**  
**(E1)**



**PARTS**

DS 18DSAL

ITEM NO.	CODE NO.	DESCRIPTION	NO. USED	REMARKS
*	1	311-959	SPECIAL SCREW (LEFT HAND) M6X23	1 (LEFT HAND)
*	1	330-588	SPECIAL SCREW (LEFT HAND) M6X27	1 (LEFT HAND) FOR USA, CAN
*	2	330-586	DRILL CHUCK 13VLRQ-N (W/O CHUCK WRENCH)	1
*	2	330-587	DRILL CHUCK 13VLRP-N (W/O CHUCK WRENCH)	1 FOR USA, CAN
	3	331-087	GEAR BOX ASS'Y	1 INCLUD. 4-28
	4	330-582	CLUTCH DIAL	1
	5	330-563	NUT	1
	6	330-562	SPRING	1
	7	330-561	THRUST PLATE	1
	8	331-090	FRONT CASE	1
	9	331-089	CLICK SPRING	1
	10	306-936	STEEL BALL D5	6
	11	331-088	LOCK RING (A)	1
	12	330-565	NEEDLE ROLLER SET (6 PCS.)	6
	13	330-567	RING GEAR	1
	14	330-566	CARRIER	1
	15	330-568	PLANET GEAR (C) SET (4 PCS.)	4
	16	330-569	PLATE (B)	1
	17	330-570	REAR CASE	1
	18	330-579	SCREW SET D2X3.5 (2 PCS.)	2
	19	312-712	SCREW SET D3X12 (4 PCS.)	4
	20	330-580	SHIFT ARM	1
	21	330-572	SLIDE RING GEAR	1
	22	330-571	PINION (C)	1
	23	330-573	PLANET GEAR (B) SET (3 PCS.)	3
	24	330-574	PINION (B)	1
	25	330-576	PLANET GEAR (A) SET (3 PCS.)	3
	26	330-575	FIRST RING GEAR	1
	27	330-577	PLATE (A)	1
	28	330-578	MOTOR SPACER	1
	29	360-866	ARMATURE AND PINION SET	1
	30	322-520	MAGNET	1
	31	322-521	DUST GUARD	1
	32	322-993	BRUSH BLOCK	1
	33	999-054	CARBON BRUSH 5X6X11.5 (1 PAIR)	2
	34	319-918	BRUSH CAP	2
	35	313-687	TAPPING SCREW (W/FLANGE) D3X16 (BLACK)	8
	36	330-594	HOUSING (A).(B) SET	1
	37	330-583	SHIFT KNOB	1
	38	330-596	DC-SPEED CONTROL SWITCH	1
	39	329-454	PUSHING BUTTON (A)	1
	40	330-584	LED HOLDER	1
	41	327-001	TRUSS HD. SCREW M4 (BLACK)	1
	42	329-686	HOOK (A)	1
	43	306-952	STRAP (BLACK)	1
	44	327-002	LOCK NUT M4 (BLACK)	2
	45	327-004	PACKING	2
	46	330-591	CONTROLLER TERMINAL SET	1
	47		NAME PLATE	1
*	48	330-068	BATTERY BSL 1830 (EUROPE, AUS, NZL)	2



