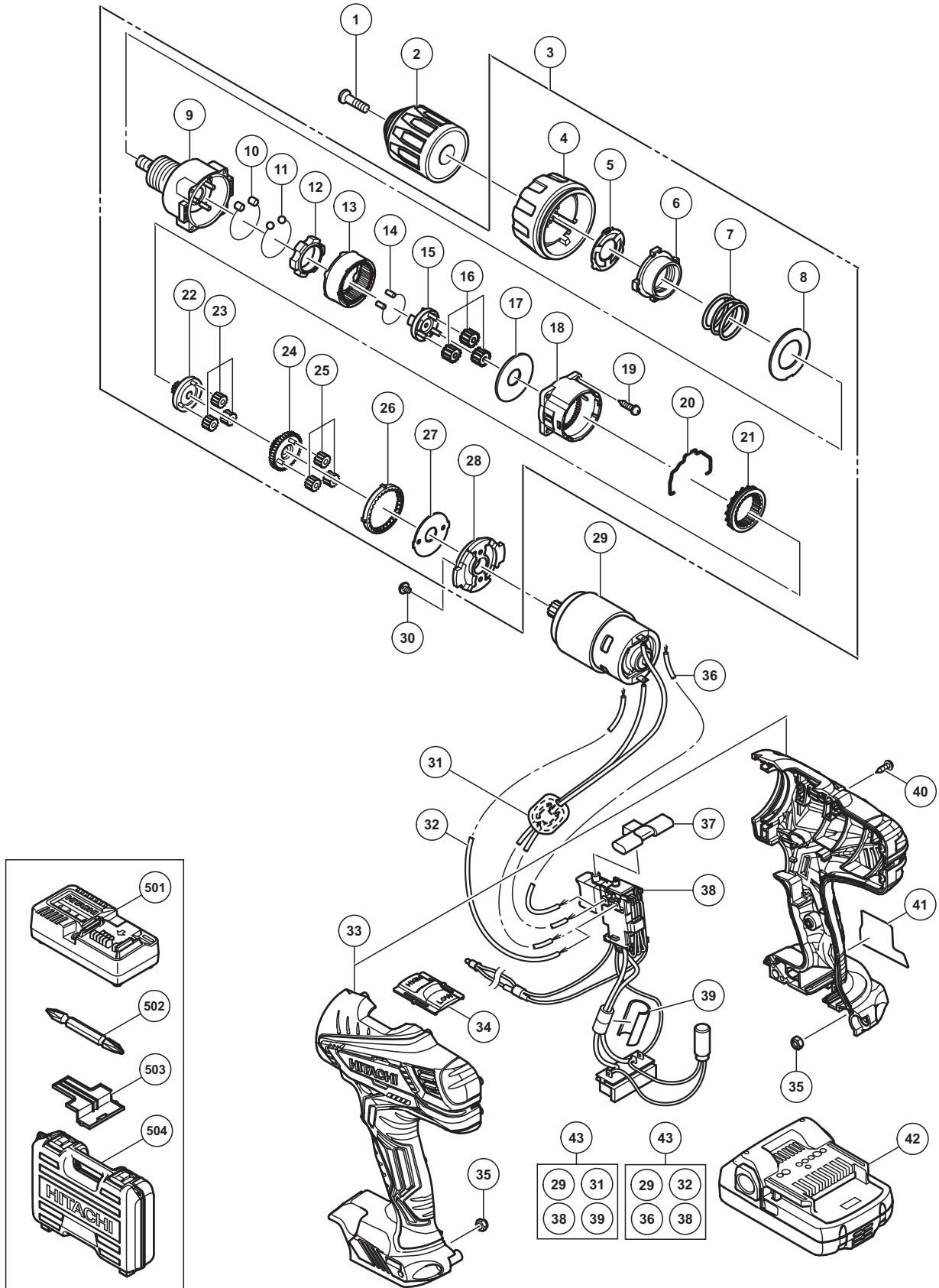


## ELECTRIC TOOL PARTS LIST

### ■ CORDLESS DRIVER DRILL Model DS 18DGL

2014·3·26  
(E1)



**PARTS**

DS 18DGL

ITEM NO.	CODE NO.	DESCRIPTION	NO. USED	REMARKS
1	311959	SPECIAL SCREW (LEFT HAND) M6 X 23	1	
* 2	336859	DRILL CHUCK 13VLRW-N (W/O CHUCK WRENCH)	1	
* 2	336852	DRILL CHUCK 13VLRW-N (W/O CHUCK WRENCH)	1	FOR GBR
* 3	336853	GEAR BOX ASS'Y	1	INCLUD.4-28
* 3	337120	GEAR BOX ASS'Y	1	INCLUD.4-28 FOR GBR
* 4	336854	CLUTCH DIAL	1	
* 4	337130	CLUTCH DIAL	1	FOR GBR
* 5	332741	CLICK SPRING	1	
* 5	337129	CLICK SPRING	1	FOR GBR
* 6	324109	NUT	1	
* 6	337222	NUT	1	FOR GBR
* 7	324110	SPRING	1	
* 7	337124	SPRING	1	FOR GBR
* 8	324347	WASHER (D)	1	
* 8	312714	WASHER (D)	1	FOR GBR
* 9	330802	FRONT CASE	1	
* 9	337121	FRONT CASE	1	FOR GBR
10	330803	ROLLER SET	6	
11	306936	STEEL BALL D5	6	
* 12	330805	LOCK RING	1	
* 12	337125	LOCK RING	1	FOR GBR
* 13	332027	RING GEAR	1	
* 13	312715	RING GEAR	1	FOR GBR
14	330806	NEEDLE ROLLER (A) SET	1	
* 15	330807	CARRIER	1	
* 15	337126	CARRIER	1	FOR GBR
* 16	332028	PLANET GEAR (C) SET (3 PCS.)	3	
* 16	312705	PLANET GEAR (C) SET (3 PCS.)	3	FOR GBR
* 17	324349	WASHER (A)	1	
* 17	312704	WASHER (A)	1	FOR GBR
* 18	324501	REAR CASE	1	
* 18	335959	REAR CASE	1	FOR GBR
19	324357	SCREW SET D3 X 12 (4 PCS.)	4	
* 20	324115	SHIFT ARM	1	
* 20	332017	SHIFT ARM	1	FOR GBR
* 21	332030	SLIDE RING GEAR (B)	1	
* 21	332013	SLIDE RING GEAR	1	FOR GBR
* 22	332029	PINION (C)	1	
* 22	337127	PINION (C)	1	FOR GBR
* 23	332031	PLANET GEAR (B) SET (3 PCS.)	3	
* 23	315816	PLANET GEAR (B) SET (3 PCS.)	3	FOR GBR
* 24	332032	PINION (B)	1	
* 24	337128	PINION (B)	1	FOR GBR
* 25	332034	PLANET GEAR (A) SET (3 PCS.)	3	
* 25	337122	PLANET GEAR (A) SET (3 PCS.)	3	FOR GBR
* 26	332033	FIRST RING GEAR	1	
* 26	332023	FIRST RING GEAR	1	FOR GBR
* 27	324355	WASHER (B)	1	
* 27	312716	WASHER (B)	1	FOR GBR
* 28	332035	MOTOR SPACER	1	



