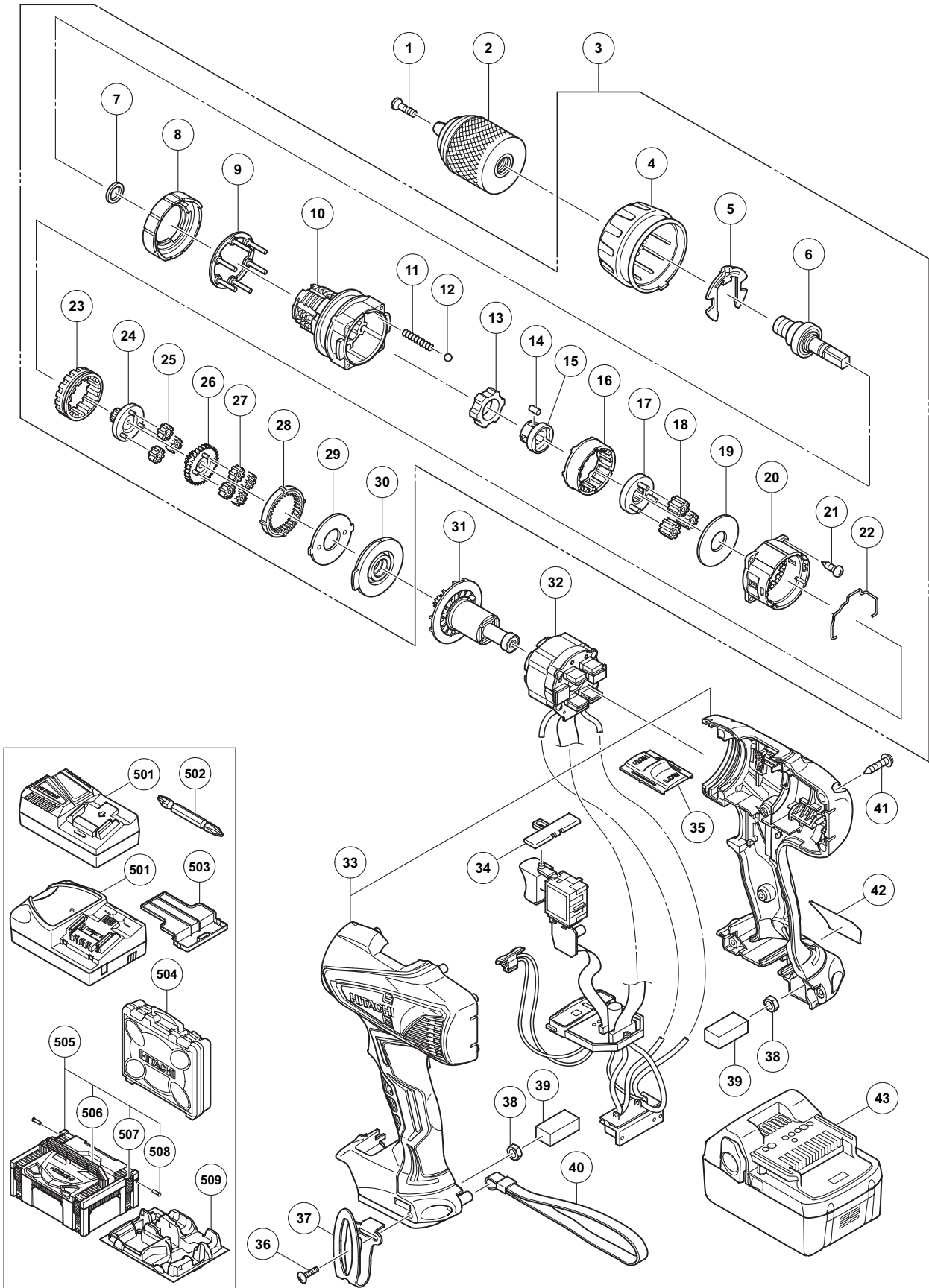


## ELECTRIC TOOL PARTS LIST

■ CORDLESS DRIVER DRILL  
Model DS 18DBEL

2013·10·3  
(E1)



**PARTS**

DS 18DBEL

ITEM NO.	CODE NO.	DESCRIPTION	NO. USED	REMARKS	
*	1	331-966	FLAT HD. SCREW (LEFT HAND) M6 X 20	1	
*	1	330-094	SPECIAL SCREW (LEFT HAND) M6	1	FOR EUROPE
*	2	335-961	DRILL CHUCK 13VLRU-N (W/O CHUCK WRENCH)	1	
*	2	335-451	DRILL CHUCK 13VLRN-N (W/O CHUCK WRENCH)	1	FOR EUROPE
	3	336-376	GEAR BOX ASS'Y	1	INCLUD. 4-30
	4	336-379	CLUTCH DIAL	1	
	5	327-146	CLICK SPRING	1	
	6	336-378	SPINDLE	1	
	7	327-147	WASHER (A)	1	
	8	327-145	NUT	1	
	9	335-948	WASHER SET	1	
	10	336-377	FRONT CASE	1	
	11	327-143	SPRING (A)	4	
	12	306-936	STEEL BALL D5	4	
	13	335-945	LOCK RING	1	
	14	335-946	NEEDLE ROLLER SET (4 PCS.)	4	
	15	335-944	SLEEVE	1	
	16	328-055	RING GEAR	1	
	17	327-139	CARRIER	1	
	18	312-705	PLANET GEAR (C) SET (3 PCS.)	3	
	19	312-704	WASHER (A)	1	
	20	335-959	REAR CASE	1	
	21	324-357	SCREW SET D3 X 12 (4 PCS.)	4	
	22	332-017	SHIFT ARM	1	
	23	332-013	SLIDE RING GEAR	1	
	24	332-012	PINION (C)	1	
	25	332-019	PLANET GEAR (A) SET (6 PCS.)	3	
	26	335-947	PINION (B)	1	
	27	335-941	PLANET GEAR (A) SET (4 PCS.)	4	
	28	335-942	FIRST RING GEAR	1	
	29	312-716	WASHER (B)	1	
	30	335-943	MOTOR SPACER	1	
	31	336-380	ROTOR PINION SET	1	
	32	335-952	WIRING SET	1	
	33	335-958	HOUSING (A).(B) SET	1	
	34	324-225	PUSHING BUTTON (B)	1	
	35	335-950	SHIFT KNOB	1	
	36	327-001	TRUSS HD. SCREW M4 (BLACK)	1	
	37	332-824	HOOK	1	
	38	327-002	LOCK NUT M4 (BLACK)	2	
	39	328-644	PACKING	2	
	40	306-952	STRAP (BLACK)	1	
	41	313-687	TAPPING SCREW (W/FLANGE) D3 X 16 (BLACK)	10	
	42		NAME PLATE	1	
*	43	335-788	BATTERY BSL 1825 (EUROPE, AUS, NZL)	2	INCLUD. 503
*	43	330-067	BATTERY BSL 1830 (USA, CAN)	2	INCLUD. 503
*	43	335-790	BATTERY BSL 1850 (EUROPE, AUS, NZL)	2	INCLUD. 503
*	43	335-791	BATTERY BSL 1850 (USA, CAN)	2	INCLUD. 503
*	43	336-265	BATTERY BSL 1850 (CHN)	2	INCLUD. 503
*	43	336-266	BATTERY BSL 1850 (TPE)	2	INCLUD. 503

STANDARD ACCESSORIES

ITEM NO.	CODE NO.	DESCRIPTION	NO. USED	REMARKS
* 501		CHARGER (MODEL UC 18YFSL)	1	
* 501		CHARGER (MODEL UC 18YML2)	1	
502	983-006	+ DRIVER BIT NO.2 65L	1	
503	329-897	BATTERY COVER	1	
504	330-592	CASE	1	
505	336-471	CASE ASS'Y (STACKABLE)	1	INCLUD. 506-508
506	336-473	HANDLE	1	
507	336-472	LATCH	4	
508	336-474	HINGE	2	
509	336-475	INNER TRAY	1	

OPTIONAL ACCESSORIES

ITEM NO.	CODE NO.	DESCRIPTION	NO. USED	REMARKS
601	955-657	- DRIVER BIT (A) 3MM X 70L	1	
602	955-659	- DRIVER BIT (A) 4MM X 70L	1	
603	955-674	- DRIVER BIT (A) 6MM X 70L	1	
604	983-004	+ DRIVER BIT NO.1 65L	1	
605	983-011	+ DRIVER BIT NO.3 65L	1	