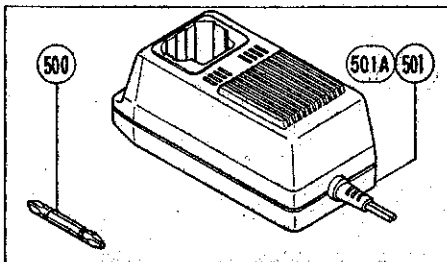
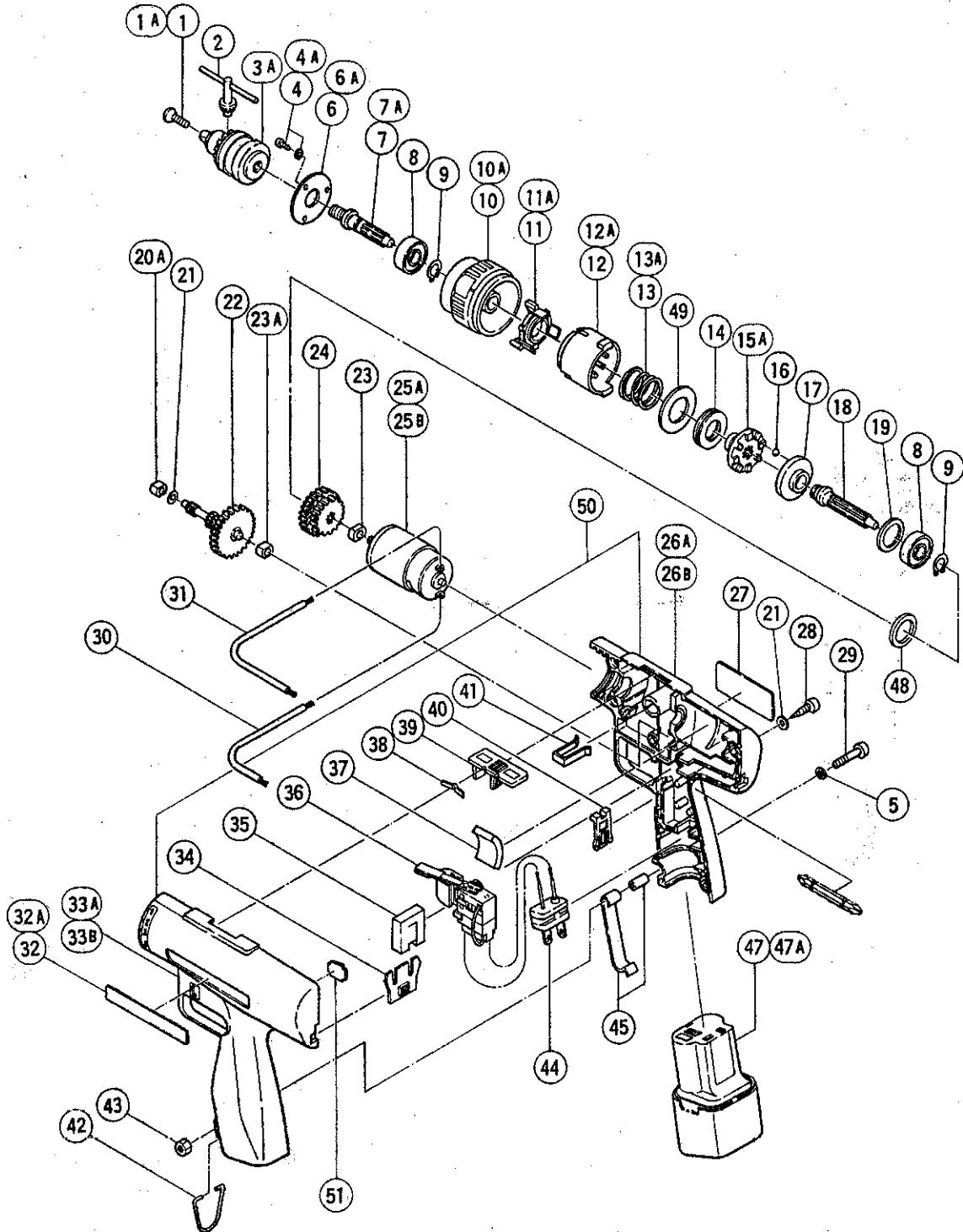


ELECTRIC TOOL PARTS LIST

■ CORDLESS SUPER DRILL
Model DRC-10

1989-10-30
DRC-10(E6)



PARTS

DRC-10

ITEM NO.	CODE NO.	DESCRIPTION	NO. USED	REMARKS
1	980-836	FLAT HD. SCREW (LEFT HAND) M5X20	1	TILL 9.1986
1A	992-077	FLAT HD. SCREW (LEFT HAND) M5X17	1	SINCE 10.1986
2	980-057	CHUCK WRENCH 10TL2	1	
3A	950-292	DRILL CHUCK 10TLRA	1	INCLUD.2
4	949-216	MACHINE SCREW M4X10 (10 PCS.)	2	TILL 12.1984
4A	984-327	TAPPING SCREW (W/SP.WASHER) D3X8	3	SINCE 1.1985
5	949-453	SPRING WASHER M4 (10 PCS.)	1	
6	981-343	PLATE	1	TILL 12.1984
6A	991-663	PLATE	1	SINCE 1.1985
7	981-337	SPINDLE (B)	1	TILL 12.1984
7A	981-355	SPINDLE (B)	1	SINCE 1.1985
8	600-0VV	BALL BEARING 6000VVCMP2S	2	
9	939-540	RETAINING RING FOR D10 SHAFT (10 PCS.)	2	
10	981-342	CAP	1	TILL 12.1984
10A	991-576	CAP	1	SINCE 1.1985
11	981-340	SPRING PLATE	1	TILL 12.1984
11A	991-575	SPRING HOLDER	1	SINCE 1.1985
12	981-341	CAP HOLDER	1	TILL 12.1984
12A	981-356	CASE	1	SINCE 1.1985
13	981-349	SPRING	1	TILL 12.1984
13B	981-359	SPRING	1	SINCE 10.1985
14	981-338	THRUST NEEDLE BEARING	1	
15A	981-336	RATCHET	1	
16	959-155	STEEL BALL D3.97 (10 PCS.)	8	
17	981-335	BALL HOLDER	1	
18	981-332	SPINDLE (A)	1	
19	981-334	DAMPER	1	TILL 12.1984
20A	984-677	METAL D4X6	1	
21	949-423	WASHER M4 (10 PCS.)	7	
22	980-823	SECOND PINION	1	
23A	997-752	METAL	2	
24	981-348	FINAL GEAR	1	
25A	980-822	MOTOR	1	TILL 8.1984
25B	992-071	MOTOR	1	SINCE 9.1984
26A	981-352	HOUSING ASSY	1	INCLUD.37 TILL 8.1984
26B	992-102	HOUSING (B)	1	SINCE 9.1984 TILL 12.1984
27		NAME PLATE	1	
28	954-004	TAPPING SCREW D4X16	5	
29	949-223	MACHINE SCREW M4X25 (10 PCS.)	1	
30		INTERNAL WIRE (B) M0.75X130 (BLACK)	1	
31		INTERNAL WIRE (B) M0.75X170 (RED)	1	
32	938-098	HITACHI LABEL	1	TILL 12.1984
32A	937-638	HITACHI LABEL	1	SINCE 1.1985
33A	981-352	HOUSING ASSY	1	INCLUD.37 TILL 8.1984
33B	992-100	HOUSING (A)	1	SINCE 9.1984 TILL 12.1984
34	981-344	BIT COVER	1	
35	980-834	SEAL	1	
36	980-830	SWITCH (2P PLUG IN TYPE) W/O LOCK	1	
37	980-840	CUSHION (A)	1	
38	980-829	SHIFT SPRING	1	
39	980-828	SHIFT KNOB	1	
40	980-833	SWITCH LOCK	1	

PARTS

DRC-10

ITEM NO.	CODE NO.	DESCRIPTION	NO. USED	REMARKS
41	980-837	KEY HOLDER	1	
42	980-838	HOOK	1	
43	949-554	NUT M4 (10 PCS.)	1	
44	980-835	CONNECTOR (B)	1	
45	980-581	BATTERY CASE HOLDER	1	
* 47	980-576Z	BATTERY B-2 (W/ENGLISH N.P.)	1	
* 47	980-575Z	BATTERY B-2 (W/GERMAN N.P.)	1	FOR FRG
* 47	980-578Z	BATTERY B-2 (W/FRENCH N.P.)	1	FOR FRA
* 47	980-579Z	BATTERY B-2 (W/ENGLISH N.P.)	1	FOR USA
* 47A	980-582	BATTERY B-2 (W/GERMAN N.P.)	1	FOR SUI
48	981-351	WASHER	1	TILL 12.1984
49	990-398	BEARING WASHER	1	SINCE 1.1985
50	981-361	HOUSING ASSY	1	INCLUD.37 SINCE 1.1985
51	981-360	BIT PLATE	1	SINCE 5.1985

STANDARD ACCESSORIES

ITEM NO.	CODE NO.	DESCRIPTION	NO. USED	REMARKS
500	955-654	+ DRIVER BIT (A) NO.2 70L	1	
501		CHARGER (MODEL BC-2)	1	TILL REPLACED BY UC 12Y
501A		CHARGER (MODEL UC 12Y)	1	

OPTIONAL ACCESSORIES

ITEM NO.	CODE NO.	DESCRIPTION	NO. USED	REMARKS
601	936-553	WRENCH 12MM	1	
602	955-678	HEX. SOCKET (A) 6MMX55L	1	
603	955-677	HEX. SOCKET (A) 5MMX55L	1	
604	955-676	HEX. SOCKET (A) 4MMX55L	1	
605	955-657	- DRIVER BIT 3MMX70	1	
606	955-659	- DRIVER BIT 4MMX70	1	
607	955-674	- DRIVER BIT (A) 6MMX70	1	
608	955-655	+ DRIVER BIT (A) NO.3 70L	1	
609	955-670	+ DRIVER BIT (A) NO.1 70L	1	
610A	981-358	CASE	1	