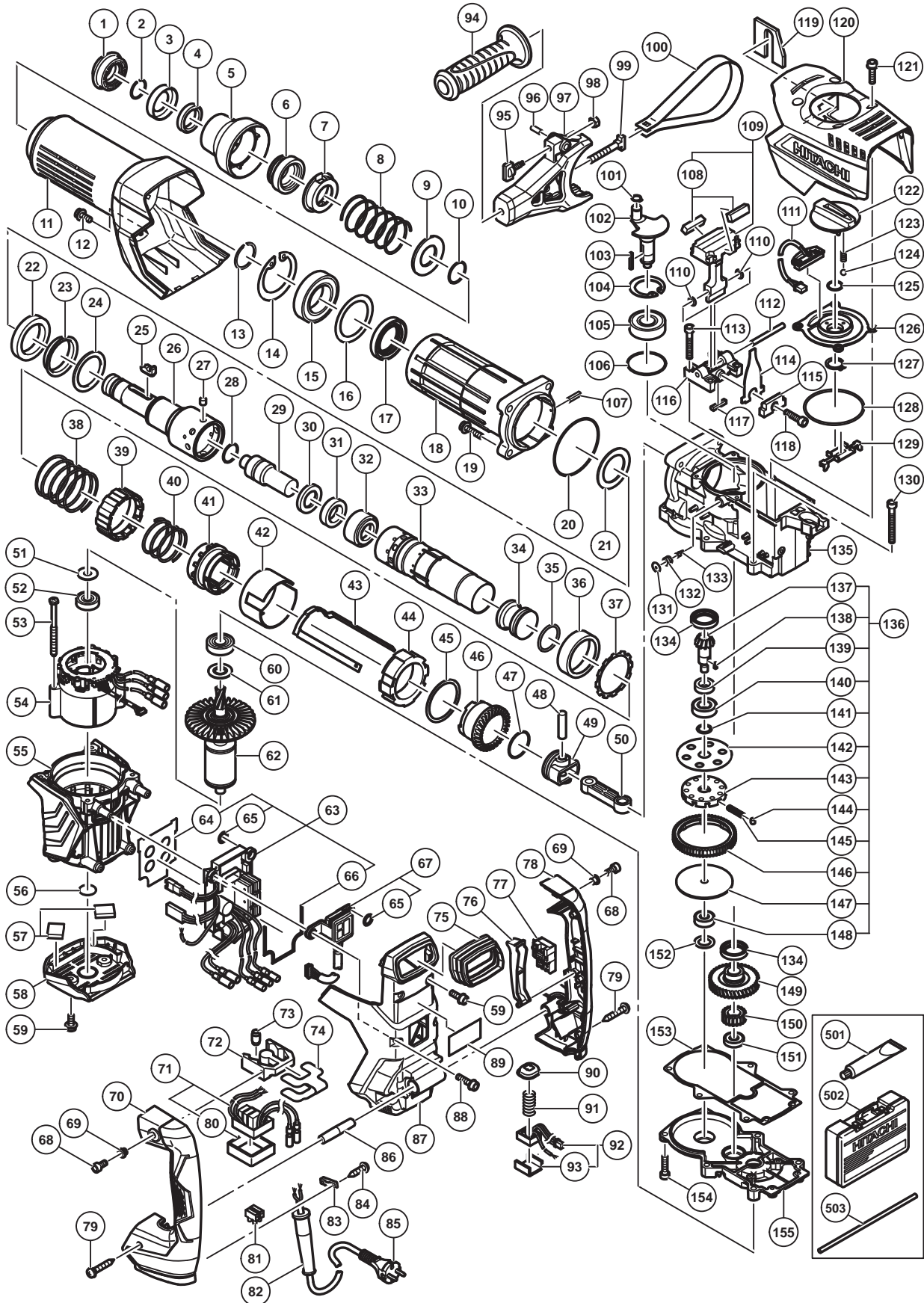


ELECTRIC TOOL PARTS LIST

■ ROTARY HAMMER Model DH 52MEY

2015-5-13
(E1)



PARTS

DH 52MEY

| ITEM NO. | CODE NO. | DESCRIPTION | NO. USED | REMARKS |
|----------|----------|---|----------|---------|
| 1 | 337562 | FRONT CAP | 1 | |
| 2 | 318590 | STOPPER RING | 1 | |
| 3 | 338155 | RETAINER WASHER | 1 | |
| 4 | 339053 | RETAINER DAMPER (A) | 1 | |
| 5 | 338154 | GRIP | 1 | |
| 6 | 338153 | BIT LOCK HOLDER | 1 | |
| 7 | 339051 | THRUST PLATE | 1 | |
| 8 | 339052 | RETAINER SPRING | 1 | |
| 9 | 337557 | SPRING HOLDER (A) | 1 | |
| 10 | 872470 | O-RING (S-26) | 1 | |
| 11 | 338198 | CYLINDER CASE COVER | 1 | |
| 12 | 998471 | HEX. SOCKET HD. BOLT (W/FLANGE) M5 X 12 | 1 | |
| 13 | 318582 | RETAINING RING D40 | 1 | |
| 14 | 338200 | RETAINING RING D68 | 1 | |
| 15 | 339063 | BALL BEARING 6008DDUCM | 1 | |
| 16 | 338201 | BEARING WASHER | 1 | |
| 17 | 318588 | OIL SEAL (NBR710) | 1 | |
| 18 | 338199 | CYLINDER CASE | 1 | |
| 19 | 990083 | HEX. SOCKET HD. BOLT (W/FLANGE) M8 X 35 | 4 | |
| 20 | 338222 | O-RING (C) | 1 | |
| 21 | 338204 | RETAINER DAMPER HOLDER | 1 | |
| 22 | 338203 | RETAINER DAMPER (B) | 1 | |
| 23 | 339064 | DAMPER SLEEVE | 1 | |
| 24 | 338202 | RETAINER DAMPER WASHER | 1 | |
| 25 | 337554 | BIT LOCK | 2 | |
| 26 | 338205 | RETAINER SLEEVE | 1 | |
| 27 | 338210 | NEEDLE PIN D8 | 8 | |
| 28 | 986104 | O-RING | 1 | |
| 29 | 338206 | SECOND HAMMER | 1 | |
| 30 | 338207 | DAMPER WASHER | 1 | |
| 31 | 328887 | DAMPER | 1 | |
| 32 | 338208 | DAMPER HOLDER | 1 | |
| 33 | 338209 | CYLINDER | 1 | |
| 34 | 338214 | STRIKER | 1 | |
| 35 | 328880 | O-RING | 1 | |
| 36 | 338211 | SPRING HOLDER (B) | 1 | |
| 37 | 338216 | LOCK SPRING WASHER | 1 | |
| 38 | 338217 | LOCK SPRING | 1 | |
| 39 | 338215 | LOCK SLEEVE | 1 | |
| 40 | 338212 | CLUTCH SPRING | 1 | |
| 41 | 338213 | CLUTCH | 1 | |
| 42 | 338218 | SLEEVE | 1 | |
| 43 | 338235 | SLIDER | 1 | |
| 44 | 338219 | METAL (A) | 1 | |
| 45 | 338220 | METAL WASHER | 1 | |
| 46 | 338221 | BEVEL GEAR | 1 | |
| 47 | 328880 | O-RING | 1 | |
| 48 | 338228 | PISTON PIN | 1 | |
| 49 | 328877 | PISTON | 1 | |
| 50 | 328878 | CONNECTING ROD | 1 | |

PARTS

DH 52MEY

| ITEM NO. | CODE NO. | DESCRIPTION | NO. USED | REMARKS |
|----------|----------|--|----------|---|
| 51 | 944954 | BEARING WASHER | 1 | |
| 52 | 6201VV | BALL BEARING 6201VVCMP2L | 1 | |
| 53 | 961501 | HEX. HD. TAPPING SCREW D5 X 60 | 2 | |
| * 54 | 340898 | STATOR SENSOR PCB SET 100V-127V | 1 | TILL 12.2014 |
| * 54 | 340921 | STATOR FET PCB SET 100V-127V | 1 | SINCE 2.2015 |
| * 54 | 340899 | STATOR SENSOR PCB SET 220V-240V | 1 | |
| 55 | 338168 | HOUSING | 1 | |
| 56 | 333225 | DUST SEAL | 1 | |
| 57 | 339065 | PACKING (B) | 2 | |
| 58 | 338170 | TAIL COVER | 1 | |
| 59 | 998485 | HEX. SOCKET HD. BOLT (W/FLANGE) M5 X 14 | 4 | |
| 60 | 6202DD | BALL BEARING 6202DDCMP2L | 1 | |
| 61 | 980700 | DUST WASHER (B) | 1 | |
| * 62 | 360992 | ROTOR | 1 | |
| * 62 | 361015 | ROTOR ASS'Y | 1 | INCLUD.51,52,60,61 FOR USA,CAN |
| * 63 | 338188 | CONTROLLER ASS'Y 100V-127V | 1 | INCLUD.64-66 TILL 12.2014 |
| * 63 | 339186 | CONTROLLER ASS'Y 100V-127V | 1 | INCLUD.64-66 SINCE 2.2015 |
| * 63 | 338189 | CONTROLLER ASS'Y 220V-240V | 1 | INCLUD.64-66 |
| 64 | 339056 | RUBBER SHEET (C) | 1 | |
| 65 | 339055 | RUBBER SHEET (A) | 4 | |
| 66 | 339057 | RUBBER SHEET (D) | 1 | |
| 67 | 338184 | PANEL ASS'Y | 1 | INCLUD.65 |
| 68 | 991690 | SEAL LOCK HEX. SOCKET HD. BOLT M5 X 12 | 2 | |
| 69 | 991711 | DISTANCE PIECE (B) | 2 | |
| 70 | 338173 | HANDLE (A) | 1 | |
| * 71 | 338180 | FILTER PCB ASS'Y 100V-127V | 1 | INCLUD.80 |
| * 71 | 338181 | FILTER PCB ASS'Y 220V-240V | 1 | INCLUD.80 |
| 72 | 310123 | TRANSATORY UNIT | 1 | |
| 73 | 310124 | HANDLE DAMPER | 4 | |
| 74 | 338162 | HANDLE DAMPER HOLDER | 1 | |
| 75 | 338176 | BELLOWS | 1 | |
| 76 | 337588 | TRIGGER | 1 | |
| 77 | 337587 | SWITCH | 1 | |
| 78 | 338174 | HANDLE (B) | 1 | |
| 79 | 307028 | TAPPING SCREW (W/FLANGE) D4 X 25 (BLACK) | 5 | |
| 80 | 339058 | FILTER PACKING | 1 | |
| 81 | 958308Z | PILLAR TERMINAL (A) | 1 | |
| * 82 | 940778 | CORD ARMOR D10.7 | 1 | |
| * 82 | 331335 | CORD ARMOR D11.2 | 1 | |
| 83 | 960266 | CORD CLIP | 1 | |
| 84 | 984750 | TAPPING SCREW (W/FLANGE) D4 X 16 | 2 | |
| * 85 | 321537 | CORD | 1 | (CORD ARMOR D10.7) |
| * 85 | 930053 | CORD | 1 | (CORD ARMOR D10.7) FOR SIN (110V), MAL (110V),UAE (110V) |
| * 85 | 500469Z | CORD | 1 | (CORD ARMOR D10.7) FOR SIN (230V), MAL (230V),UAE (230V) |
| * 85 | 500453Z | CORD | 1 | (CORD ARMOR D10.7) FOR USA,CAN |
| * 85 | 500503Z | CORD | 1 | (CORD ARMOR D10.7) FOR AUS,NZL |
| * 85 | 500483Z | CORD | 1 | (CORD ARMOR D11.2) FOR GBR (110V) |
| * 85 | 337366 | CORD | 1 | (CORD ARMOR D10.7) FOR GBR (230V) |

PARTS

DH 52MEY

| ITEM NO. | CODE NO. | DESCRIPTION | NO. USED | REMARKS |
|----------|----------|---|----------|----------------------------|
| * 85 | 500457Z | CORD | 1 | (CORD ARMOR D10.7) FOR CHN |
| 86 | 338175 | HANDLE SHAFT | 1 | |
| 87 | 338197 | BACK COVER | 1 | |
| 88 | 994192 | HEX. SOCKET HD. BOLT (W/FLANGE) M5 X 16 | 4 | |
| 89 | | NAME PLATE | 1 | |
| 90 | 338171 | ON LOCK BUTTON | 1 | |
| 91 | 338172 | ON LOCK SPRING | 1 | |
| 92 | 338185 | ON LOCK PCB (A) ASS'Y | 1 | INCLUD.93 |
| 93 | 339059 | PACKING (A) | 1 | |
| 94 | 330209 | SIDE HANDLE | 1 | |
| 95 | 337577 | WING BOLT | 1 | |
| 96 | 949859 | ROLL PIN D2 X 8 (10 PCS.) | 1 | |
| 97 | 338239 | MOUNT | 1 | |
| 98 | 949556 | NUT M6 (10 PCS.) | 1 | |
| 99 | 333227 | HANDLE BOLT | 1 | |
| 100 | 338238 | BAND | 1 | |
| 101 | 939542 | RETAINING RING FOR D12 SHAFT (10 PCS.) | 1 | |
| 102 | 338224 | CRANK SHAFT | 1 | |
| 103 | 328869 | FEATHER KEY 3 X 3 X 25 | 1 | |
| 104 | 948227 | RETAINING RING FOR D47 HOLE | 1 | |
| 105 | 6204DD | BALL BEARING 6204DDCMPS2L | 1 | |
| 106 | 338227 | O-RING (F) | 1 | |
| 107 | 949859 | ROLL PIN D2X8 (10 PCS.) | 1 | |
| 108 | 339112 | WEIGHT DAMPER | 2 | |
| 109 | 339067 | WEIGHT ASS'Y | 1 | INCLUD.108 |
| 110 | 338191 | WASHER | 2 | |
| 111 | 338179 | ON LOCK PCB (B) | 1 | |
| 112 | 338192 | WEIGHT PIN | 1 | |
| 113 | 306061 | SEAL LOCK HEX. SOCKET HD. BOLT M5 X 30 | 4 | |
| 114 | 338187 | LEAF SPRING (B) | 2 | |
| 115 | 328906 | SPRING HOLDER | 2 | |
| 116 | 338190 | BASE | 1 | |
| 117 | 338194 | WEIGHT BUMPER | 2 | |
| 118 | 990079 | SEAL LOCK HEX. SOCKET HD. BOLT M5 X 16 | 2 | |
| 119 | 339050 | FELT PACKING (D) | 1 | |
| 120 | 338237 | CRANK COVER | 1 | |
| 121 | 338177 | HEX. SOCKET HD. BOLT (W/FLANGE) M5 X 18 | 4 | |
| 122 | 338159 | CHANGE LEVER | 1 | |
| 123 | 337567 | LEVER SPRING | 1 | |
| 124 | 959149 | STEEL BALL D4.76 (10 PCS.) | 1 | |
| 125 | 878885 | O-RING (S-18) | 1 | |
| 126 | 338236 | LEVER SHAFT HOLDER | 1 | |
| 127 | 939547 | RETAINING RING FOR D20 SHAFT (10 PCS.) | 1 | |
| 128 | 338160 | O-RING (A) | 1 | |
| 129 | 338234 | CHANGE PLATE | 1 | |
| 130 | 986940 | SEAL LOCK HEX. SOCKET HD. BOLT M6 X 45 | 4 | |
| 131 | 339062 | FELT PACKING (C) | 1 | |
| 132 | 339061 | CAP SCREW | 1 | |
| 133 | 995396 | VALVE | 1 | |
| 134 | 328867 | OIL SEAL | 2 | |

OPTIONAL ACCESSORIES

DH 52MEY

| ITEM NO. | CODE NO. | DESCRIPTION | NO. USED | REMARKS |
|----------|----------|--|----------|------------|
| 601 | 308471 | GREASE FOR HAMMER.HAMMER DRILL (70G) | 1 | |
| 602 | 980927 | GREASE FOR HAMMER.HAMMER DRILL (500G) | 1 | |
| 603 | 320859 | SYRINGE (BLOW-OUT BULB TYPE) | 1 | |
| 604 | 318085 | SYRINGE (BELLOWS TYPE) | 1 | |
| 605 | 313448 | DRILL BIT (SDS MAX) D16 X 340 | 1 | |
| 606 | 313456 | DRILL BIT (SDS MAX) D16 X 540 | 1 | |
| 607 | 313449 | DRILL BIT (SDS MAX) D19 X 340 | 1 | |
| 608 | 313457 | DRILL BIT (SDS MAX) D19 X 540 | 1 | |
| 609 | 313450 | DRILL BIT (SDS MAX) D22 X 320 | 1 | |
| 610 | 313458 | DRILL BIT (SDS MAX) D22 X 520 | 1 | |
| 611 | 313451 | DRILL BIT (SDS MAX) D25 X 320 | 1 | |
| 612 | 313459 | DRILL BIT (SDS MAX) D25 X 520 | 1 | |
| 613 | 313452 | DRILL BIT (SDS MAX) D28 X 370 | 1 | |
| 614 | 313460 | DRILL BIT (SDS MAX) D28 X 570 | 1 | |
| 615 | 313453 | DRILL BIT (SDS MAX) D32 X 370 | 1 | |
| 616 | 313461 | DRILL BIT (SDS MAX) D32 X 570 | 1 | |
| 617 | 313454 | DRILL BIT (SDS MAX) D38 X 370 | 1 | |
| 618 | 313462 | DRILL BIT (SDS MAX) D38 X 570 | 1 | |
| 619 | 313455 | DRILL BIT (SDS MAX) D40 X 370 | 1 | |
| 620 | 313463 | DRILL BIT (SDS MAX) D40 X 570 | 1 | |
| 621 | 944460 | TAPER SHANK DRILL BIT D11 X 100 | 1 | |
| 622 | 944461 | TAPER SHANK DRILL BIT D12.3 X 110 | 1 | |
| 623 | 993038 | TAPER SHANK DRILL BIT D12.7 X 110 | 1 | |
| 624 | 944500 | TAPER SHANK DRILL BIT D14.5 X 110 | 1 | |
| 625 | 944477 | COTTER | 1 | |
| 626 | 313465 | ADAPTER (SDS MAX) FOR SDS PLUS SHANK BIT | 1 | |
| 627 | 955994 | CORE BIT 25MM | 1 | |
| 628 | 955995 | CORE BIT 29MM | 1 | |
| 629 | 955996 | CORE BIT 32MM | 1 | INCLUD.630 |
| 630 | 955997 | GUIDE PLATE (FOR CORE BIT 32MM) | 1 | |
| 631 | 955998 | CORE BIT 35MM | 1 | INCLUD.632 |
| 632 | 955999 | GUIDE PLATE (FOR CORE BIT 35MM) | 1 | |
| 633 | 956000 | CORE BIT 38MM | 1 | INCLUD.634 |
| 634 | 956001 | GUIDE PLATE (FOR CORE BIT 38MM) | 1 | |
| 635 | 955154 | CORE BIT 45MM | 1 | INCLUD.636 |
| 636 | 955166 | GUIDE PLATE (FOR CORE BIT 45MM) | 1 | |
| 637 | 955155 | CORE BIT 54MM | 1 | INCLUD.638 |
| 638 | 955167 | GUIDE PLATE (FOR CORE BIT 54MM) | 1 | |
| 639 | 956002 | CORE BIT 64MM | 1 | INCLUD.640 |
| 640 | 956003 | GUIDE PLATE (FOR CORE BIT 64MM) | 1 | |
| 641 | 955157 | CORE BIT 79MM | 1 | INCLUD.642 |
| 642 | 955168 | GUIDE PLATE (FOR CORE BIT 79MM) | 1 | |
| 643 | 956004 | CORE BIT 94MM | 1 | INCLUD.644 |
| 644 | 956005 | GUIDE PLATE (FOR CORE BIT 94MM) | 1 | |
| 645 | 955159 | CORE BIT 105MM | 1 | INCLUD.646 |
| 646 | 955169 | GUIDE PLATE (FOR CORE BIT 105MM) | 1 | |
| 647 | 956006 | CORE BIT 120MM | 1 | INCLUD.648 |
| 648 | 956007 | GUIDE PLATE (FOR CORE BIT 120MM) | 1 | |
| 649 | 956728 | CORE BIT 150MM | 1 | INCLUD.650 |
| 650 | 956743 | GUIDE PLATE (FOR CORE BIT 150MM) | 1 | |

