

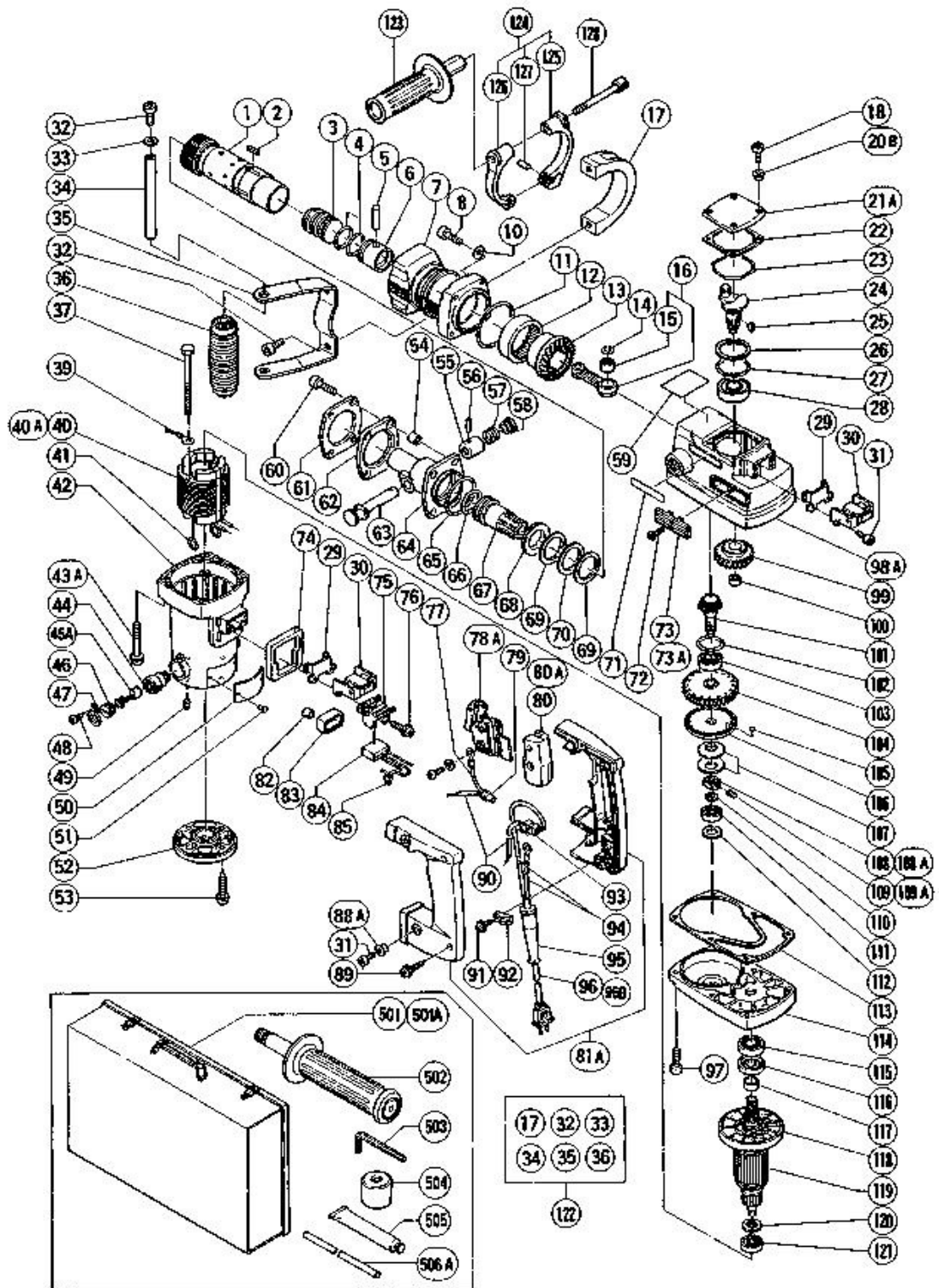
HITACHI

LIST NO. 0498

ELECTRIC TOOL PARTS LIST

■ HAMMER DRILL
Model DH 50SB

2000.6.1
(E4-1)



DH50SB

ItemNo	CodeNo	Description	NoUsed	Remarks
1	993-231	CYLINDER	1	
2	971-750	FEATHER KEY 3X3X20	4	
3	993-252	STRIKER	1	
4	985-773	O-RING (A)	2	
5	955-593	PISTON PIN	1	
6	985-772	PISTON	1	
7	993-247	CYLINDER CASE	1	
8	993-237	SEAL LOCK HEX. SOCKET HD. BOLT M6X35	4	
10	949-432	BOLT WASHER M6 (10 PCS.)	4	
11	985-779	O-RING (D)	1	
12	985-782	NEEDLE BEARING (M526320)	1	
13	985-775	THIRD GEAR	1	
14	939-542	RETAINING RING FOR D12 SHAFT (10 PCS.)	1	
15	980-756	NEEDLE BEARING (NSK AJ50 1203)	1	
16	985-771	CONNECTING ROD ASS'Y	1	INCLUD.15
17	986-960	HOLDER (A)	1	FOR USA
18	983-162	SEAL LOCK HEX. SOCKET HD. BOLT M4X12	4	
20B	990-146	DISTANCE PIECE (A)	4	TILL 1.1988
21A	991-716	CRANK COVER	1	
22	980-749	SEAL PACKING	1	
23	980-744	O-RING (S-55)	1	
24	985-763	CRANK SHAFT	1	
25	932-815	WOODRUFF KEY 3X13	1	
26	948-227	RETAINING RING FOR D47 HOLE	1	
27	985-765	O-RING (B)	1	
28	620- 4DD	BALL BEARING 6204DDCMPS2L	1	
29	980-750	GUIDE PLATE	2	
30	980-727	HANDLE RUBBER	2	
31	984-509	SEAL LOCK HEX. SOCKET HD. BOLT M5X14	6	
32	949-656	HEX. SOCKET HD. BOLT M8X20 (10 PCS.)	4	FOR USA
33	986-963	WASHER (C)	2	FOR USA
34	986-962	SHAFT	1	FOR USA
35	986-961	HOLDER (B)	1	FOR USA
36	944-951	GRIP	1	FOR USA

37	961-400	HEX. HD. TAPPING SCREW D5X70	2	
39	986-277	INTERNAL WIRE	1	FOR ITA,FRA,HOL,DEN,SUI
40	985-471C	STATOR ASS'Y 110V-115V	1	INCLUD.41
40A	985-471F	STATOR ASS'Y 230V-240V	1	INCLUD.41
41	937-623	BRUSH TERMINAL	2	
42	985-435	HOUSING ASS'Y	1	INCLUD.44,49
43A	994-085	HEX. SOCKET HD. BOLT (W/FLANGE) M6X60	4	
44	983-362	BRUSH HOLDER	2	
45A	999-071	CARBON BRUSH (AUTO STOP TYPE) (1 PAIR)	2	
46	961-781	BRUSH CAP	2	
47	981-959	CAP COVER	2	
48	958-715	TAPPING SCREW D4X10	2	
49	938-477	HEX. SOCKET SET SCREW M5X8	2	
50		NAME PLATE	1	
51	949-510	RIVET D2.5X4.8 (10 PCS.)	2	
52	985-437	TAIL COVER	1	
53	985-480	TAPPING SCREW (W/WASHER) D5X20	2	
54	986-892	COLLAR	4	
55	993-241	SPRING CASE	1	
56	943-364	NEEDLE ROLLER D4X20	1	
57	993-242	STOPPER SPRING	1	
58	993-243	STOPPER SLEEVE	1	
59		CAUTION PLATE	1	
60	986-894	SEAL LOCK HEX. SOCKET HD. BOLT M8X30	4	
61	986-891	PLATE	1	
62	986-890	FRONT DAMPER (A)	1	
63	993-240	STOP LEVER	1	
64	993-236	FRONT COVER	1	
65	986-896	O-RING (F)	1	
66	986-882	O-RING	1	
67	993-232	SECOND HAMMER	1	
68	993-235	DAMPER WASHER	1	
69	993-234	DAMPER	2	
70	993-233	WASHER	1	
71	957-561	HITACHI LABEL	1	
72	993-244	SEAL LOCK FLAT HD. SCREW	2	TILL 7.1987

		M4X12		
73	980-735	WIND GUIDE	2	TILL 7.1987
73A	991-713	WIND GUIDE (B)	2	SINCE 8.1987
74	980-751	HANDLE PACKING	1	
75	985-469	INTERNAL WIRE HOLDER	1	
76	985-605	TAPPING SCREW (W/WASHER) D5X25	2	
77	983- 276Z	INTERNAL WIRE	1	FOR ITA,FRA,HOL,DEN,SUI
78A	992-891	SWITCH (A) (1P SCREW TYPE) W/O LOCK	1	
79	959-141	CONNECTOR 50092 (10 PCS.)	2	
80	981-869	SUPPORT	1	TILL 3.1987
80A	990-082	SUPPORT (E)	1	SINCE 4.1987
81A	993-254	HANDLE (A).(B) SET	1	
82		VINYL TUBE (ID9XT0.5X55)	1	TILL 4.1987
83	985-474	WIRE SUPPORT	1	FOR USA
84	994-273	NOISE SUPPRESSOR	1	
85	959-140	CONNECTOR 50091 (10 PCS.)	1	
88A	991-711	DISTANCE PIECE (B)	4	
89	981-814	TAPPING SCREW (W/WASHER) D4X30	2	
90		VINYL TUBE (ID7XT0.5X50)	2	
91	982-095	TAPPING SCREW (W/WASHER) D4X20	2	
92	960-266	CORD CLIP	1	
93	938-307	PILLAR TERMINAL	1	
94		VINYL TUBE (ID7XT0.5X80)	2	
94		VINYL TUBE (ID7XT0.5X50)	2	FOR AUS
95	940-778	CORD ARMOR D10.7	1	
96	500- 407Z	CORD	1	(CORD ARMOR D10.7) FOR CAN
96	500- 390Z	CORD	1	(CORD ARMOR D10.7) FOR ITA,FRA,HOL,DEN
96	500- 391Z	CORD	1	(CORD ARMOR D10.7) FOR SUI
96B	500- 434Z	CORD	1	(CORD ARMOR D10.7) FOR USA
97	992-803	SEAL LOCK HEX. SOCKET HD. BOLT M6X20	2	
98A	987-020	CRANK CASE	1	INCLUD.73A
99	985-764	FIRST GEAR	1	
100	939-299	NEEDLE BEARING (M661)	1	
101	985-770	THIRD PINION	1	
102	984-483	O-RING (S-36)	1	

103	620-2DD	BALL BEARING 6202DDCMPS2L	1	
104	985-766	SECOND GEAR	1	
105	959-150	STEEL BALL D6.35 (10 PCS.)	17	
106	985-767	CLUTCH PLATE	1	
107	985-768	BELLEVILLE SPRING	2	
108	985-783	SPECIAL NUT	1	TILL 2.1988
108A	300-042	SPECIAL NUT	1	SINCE 3.1988
109	962-782	HEX. SOCKET SET SCREW M5X6	1	TILL 2.1988
109A	985-033	HEX. SOCKET SET SCREW M6X6	1	SINCE 3.1988
110	944-516	BEARING WASHER (B)	1	
111	629-MC2	BALL BEARING 629C2	1	
112	944-525	BEARING WASHER (C)	1	
113	985-769	SEAL PACKING	1	
114	993-248	GEAR COVER	1	
115	620-2VV	BALL BEARING 6202VVCMP2L	1	
116	985-439	OIL SEAL (FPM 807)	1	
117	985-438	SLEEVE	1	
118	985-482	FAN	1	
119	985-472U	ARMATURE ASS'Y 115V	1	INCLUD.115,117,118,120,121
119	985-472E	ARMATURE ASS'Y 220V-230V	1	INCLUD.118
120	985-436	DUST WASHER	1	
121	620-0VV	BALL BEARING 6200VVCMP2L	1	
122	986-959	HOLDER ASS'Y	1	INCLUD.17,32-36 FOR USA
123	985-477	SIDE HANDLE	1	EXCEPT FOR USA
124	985-464	HANDLE HOLDER ASS'Y	1	INCLUD.125-127 EXCEPT FOR USA
125	985-475	HANDLE HOLDER (A)	1	EXCEPT FOR USA
126	985-476	HANDLE HOLDER (B)	1	EXCEPT FOR USA
127	949-747	ROLL PIN D6X25 (10 PCS.)	1	EXCEPT FOR USA
128	985-465	HANDLE BOLT	1	EXCEPT FOR USA
501B	319-784	CASE (PLASTIC)	1	
502	956-259	SIDE HANDLE	1	FOR USA
503	872-422	HEX. BAR WRENCH 6MM	1	(FOR BOLT M8)
504	993-245	DUST COVER	2	
505	981-840	GREASE (A) FOR HAMMER.HAMMER DRILL (30G)	1	

506A	971-786	STOPPER ROD	1	EXCEPT FOR USA
------	---------	-------------	---	----------------