

# Hitachi Power Tools

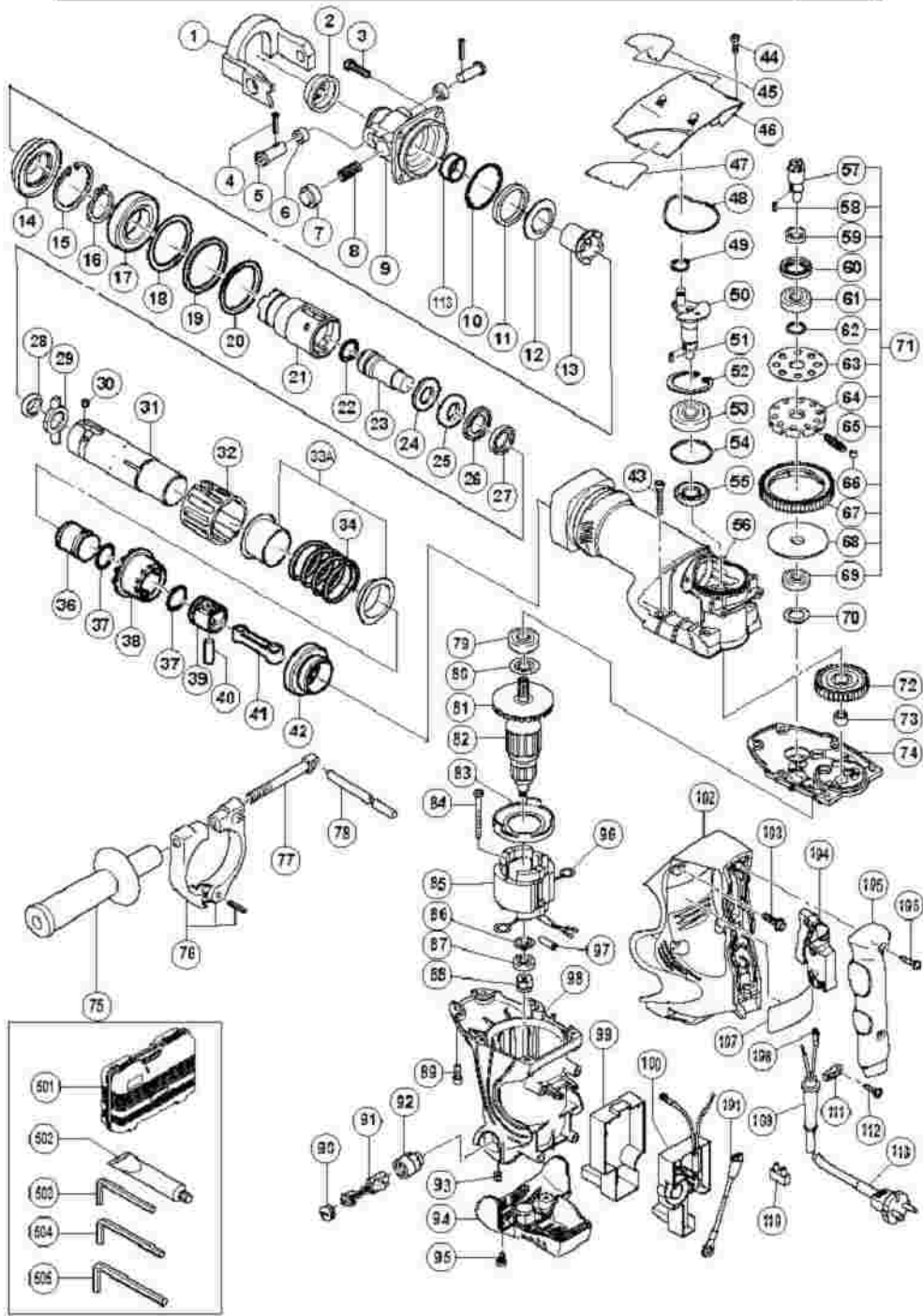
LIST NO. E471

## ELECTRIC TOOL PARTS LIST

■ ROTARY HAMMER  
Model DH 40SR

2006·12·1

(E1-3)



## DH40SR

Pos. Nr.	Art. Nr.	Beschreibung	Stueck	Kommentar	Beschreibung
1	990-131	MEISSELHALTER H41SA	1		RETAINER
2	322-078	Staubabdeckung DH40SR	1		DUST COVER
3	981-942	INBUSSCHRAUBE M6X25 SELBSTSICH	4		SEAL LOCK HEX. SOCKET HD. BOLT M6X25
4	991-697	ROLLSTIFT D4X20 H41SA	2		ROLL PIN D4X20
5	990-135	WERKZEUGHALTERSTIFT H41SA	2		RETAINER PIN
6	990-134	DAMPFER H41SA	2		DAMPER (B)
7	990-133	DRUCKKNOPF H41SA	1		PUSHING BUTTON
8	990-132	STELLFEDER H41SA	1		SET SPRING
9	321-844	Vordergehäuse (A) DH40SR	1	INCLUD.114	FRONT COVER (A) ASS'Y
10	956-996	O-RING (1AS-60) DIV TYPEN	1		O-RING (1AS-60)
11	321-843	Dampfer DH40SR	1		DAMPER (B)
12	321-842	Abdichtung DH40SR	1		DRIVER HOLDER
13	321-841	Werkzeugaufnahme DH 40 SR	1		DRIVER
14	321-840	Oldichtung DH 40 SR	1		OIL SEAL (B)
15	321-839	Sicherungsring D62 DH40SR	1		RETAINING RING FOR D62 HOLE
16	948-131	Sicherungsring D35 DH40SR	1		RETAINING RING FOR D35 SHAFT
17	600-7DD	KUGELLAGER 6007 DD	1		BALL BEARING 6007DDUAV2S
18	321-297	Lagerscheibe DH40SR	1		BEARING WASHER
19	981-859	URETHANRING DH40MA/MB/MR	1		URETHANE RING
20	321-838	Ringhalter DH40SR	1		RING HOLDER
21	321-837	Hammerhülse DH40SR	1		HAMMER SLEEVE
	313-				

22	396	O-RING (C) DH40MA/MB/MR	1		O-RING (C)
23	321-833	Zweithammer DH40SR	1		SECOND HAMMER
24	321-836	Dampferscheibe DH40SR	1		DAMPER WASHER
25	321-835	Dampfer DH40SR	1		DAMPER
26	321-834	Dampferhalter DH40SR	1		DAMPER HOLDER
27	321-856	Dampferhalter (B) DH40SR	1		DAMPER HOLDER (B)
28	321-832	Dampfer (C) DH40SR	1		DAMPER (C)
29	321-831	Schiebering	1		SLIDE RING
30	313-057	NADEL BOLZEN D6X6 DH40YB/MR	4		NEEDLE PIN D6X6
31	321-827	Zylinder DH40SR	1		CYLINDER
32	321-830	Schiebehülse (B) DH40SR	1		SLIDE SLEEVE (B)
33A	326-512		1		SLIDE SLEEVE (A) SET
34	321-828	Feder (A) DH40SR	1		SPRING (A)
36	321-976	Anschlager DH40SR	1		STRIKER
37	986-104	O-RING DH28/40/50 (HAMMER)	2		O-RING
38	321-975	Kupplung DH40SR	1		CLUTCH
39	321-284	Kolben DH40MR	1		PISTON
40	980-708	KOLBENSTIFT DH28Y/DH38YB/DH40MR	1		PISTON PIN
41	321-285	Pleuel DH40MR	1		CONNECTING ROD
42	321-296	Schragzahnrad DH40MR	1		BEVEL GEAR
43	986-940	INBUSSCHRAUBE M6X45 SELBSTSICH	4		SEAL LOCK HEX. SOCKET HD. BOLT M6X45
44	983-162	INBUSSCHRAUBE M4X12 SELBSTS	4		SEAL LOCK HEX. SOCKET HD. BOLT M4X12
45			1		HITACHI LABEL

46	321-315	Kurbelgehäuse DH40SR	1	CRANK COVER
47			1	HITACHI LABEL
48	321-314	Gummidichtung DH40MR	1	RUBBER SEAL
49	939-540	SICHERUNGSRING D10 (10ST)	1	RETAINING RING FOR D10 SHAFT (10 PCS.)
50	321-275	Kurbelwelle DH40SR	1	CRANK SHAFT
51	944-109	KEIL 3X3X8 DH22VB/G12SA/G12SA2/ G13SB2/G	1	FEATHER KEY 3X3X8
52	948-391	SICHERUNGSRING D40 INNEN H41SA/H45MA/DH4	1	RETAINING RING FOR D40 HOLE
53	620-3DD	KUGELLAGER 6203 DD	1	BALL BEARING 6203DDCMPS2L
54	996-363	O-RING (S-40) H41SA/H45MA/DH40MR	1	O-RING (S-40)
55	321-274	Oldichtung (B) DH40MR	1	OIL SEAL (B)
56	321-826	Zylindergehäuse DH40SR	1	CYLINDER CRANK CASE
57	321-278	Schragritzel DH40SR	1	BEVEL PINION
58	944-109	KEIL 3X3X8 DH22VB/G12SA/G12SA2/ G13SB2/G	1	FEATHER KEY 3X3X8
59	321-279	Buchse DH40SR	1	COLLAR
60	313-050	OLDICHTUNG (A) DH40YB/MR	1	OIL SEAL (A)
61	600-2DD	KUGELLAGER 6002 DD	1	BALL BEARING 6002DDCMPS2L
62	313-058	UNTERLEGSSCHEIBE DH40YB/MR	1	WASHER
63	313-053	UNTERLEGSSCHEIBE (A) DH40YB/MR	1	WASHER (A)
64	321-281	Getriebehalter DH40SR	1	GEAR HOLDER
65	321-282	Feder (C) DH40SR	10	SPRING (C)
66	320-343	NADEL DH30PB/DH30PC/DH40MR	10	NEEDLE
67	321-280	Zweites Zahnrad DH40SR	1	SECOND GEAR
	321-			

68	283	Abstandscheibe DH40SR	1		SPACER
69	629-VVM	KUGELLAGER 629 VVM	1		BALL BEARING 629VVC2PS2L
70	944-525	UNTERLEGSCHIEBE (C) CR17Y/DH50SA1/DH40MR	1		BEARING WASHER (C)
71	321-277	Rutschkupplung kpl DH40MR	1	"INCLUD.57-59,61-69"	SLIP CLUTCH ASS'Y
72	321-276	Erstes Zahnrad DH40SR	1		FIRST GEAR
73	939-299	NADELLAGER (M661) DH40MA/MB/YB/FA/MR H45	1		NEEDLE BEARING (M661)
74	321-319	Getriebedeckel DH40SR	1		GEAR COVER
75	313-078	SEITENHANDGRIFF DH40YB/DH40FA/FB/MR/DH30	1		SIDE HANDLE
76	313-079	HANDGRIFFHALTER DH40MA/MB/YB/FA/MR	1		HANDLE HOLDER
77	313-080	HANDGRIFFBOLZEN DH40MA/MB/YB/FA/MR/DH30P	1		HANDLE BOLT
78	971-786	TIEFENANSCHLAG DH40MA/MB/YB/FA/FB/MR	1		STOPPER ROD
79	620-1DD	KUGELLAGER 6201 DD	1		BALL BEARING 6201DDCMPS2L
80	302-429	STAUBSCHEIBE (B) H45MR/DH40MR	1		DUST WASHER (B)
81	321-640	Ventilator DH40SR	1		FAN
82	360-591U		1	"INCLUD.79-81,86,87"	ARMATURE ASS'Y 110V-120V
82	360-591E	Anker 220-230V DH40MR	1	INCLUD.81	ARMATURE ASS'Y 220V-230V
82	360-591F		1	INCLUD.81	ARMATURE ASS'Y 240V
83	321-320	Ventilatorführung (DH40MR)	1		FAN GUIDE
84	953-174	SCHNEIDSCHRAUBE D5X55	2		HEX. HD. TAPPING SCREW D5X55
85	340-542C		1	INCLUD.96	STATOR ASS'Y 110V
85	340-542E	Stator 220-230V DH40MR	1	INCLUD.96	STATOR ASS'Y 220V-230V
85	340-542J		1	INCLUD.96	STATOR ASS'Y 240V
86	982-631	UNTERLEGSCHIEBE (A) CR17Y/DH20PB H30PV/D	1		WASHER (A)
87	608-	KUGELLAGER 608 VVM	1		BALL BEARING

	VVM				608VVC2PS2L
88	318-721	MAGNET DC120VA /G13V/G13YD/DH40MR	1		MAGNET
89	321-313	Schraube M6x22	2		SEAL LOCK HEX. SOCKET HD. BOLT M6X22
90	935-829	BURSTENKAPPE H41SA/H45MA/VB13Y VB16Y/H45	2		BRUSH CAP
91	999-073	KOHLEBURSTEN SELBSTABSCH (PAAR)	2		CARBON BRUSH (AUTO STOP TYPE) (1 PAIR)
92	971-001	KOHLLENHALTER H41SA/H45MA/VB13Y VB16Y/H45	2		BRUSH HOLDER
93	938-477	INBUSSTIFTSCHRAUBE M5X8	2		HEX. SOCKET SET SCREW M5X8
94	321-321	Gehäuseabdeckung DH40MR	1		TAIL COVER
95	877-839	INBUSSCHRAUBE MIT DICHTUNG M5X10	2		SEAL LOCK HEX. SOCKET HD. BOLT M5X10
96	930-703	KOHLLENHALTERKLEMME DH28Y u a H30PV/VB16	2		BRUSH TERMINAL
97	321-322	Gummi H25PV	1		VINYL TUBE
98	321-318	Gehäuse kpl DH40MR	1	"INCLUD.92,93"	HOUSING ASS'Y
99	321-858	Gehäuse (B) DH40SR	1		CASE (B)
100	321-861		1		CONTROLLER CIRCUIT 110V
100	321-862	Drehzahlregler DH40SR	1	FOR EUROPE	CONTROLLER CIRCUIT 230V
101	317-113	VERBINDERKABEL H60MB/DH40MR	1		INTERNAL WIRE
102	321-859	Handgriff DH40SR	1		HANDLE
103	998-485	Schraube M5x14	6		HEX. SOCKET HD. BOLT (W/FLANGE) M5X14
104	313-093	SCHALTER DH40MA/MB/YB/FA/FB/MR	1		SWITCH (C) (2P SCREW TYPE W/O LOCK)
105	321-324	Handgriffabdeckung DH40MR	1		HANDLE COVER
	301-	SCHNEIDSCHRAUBE D4X20 MIT			TAPPING SCREW

106	653	FLANSCH (SCHWA	2		(W/FLANGE) D4X20 (BLACK)
107			1		NAME PLATE
108	980-063	KABELSCHUH C7U/CJ65V2/H70SA/G13V G13YD/G	1	FOR CORD	TERMINAL
109	940-778	KABELKNICKSCHUTZ D10 7 DIV TYPEN	1		CORD ARMOR D10.7
109	958-049	KABELKNICKSCHUTZ D8 2 DIV TYPEN	1		CORD ARMOR D8.2
110	938-307	SCHRAUBKLEMME 1-REIHIG DIV TYPEN	1		PILLAR TERMINAL
111	960-266	KABELKLEMME DIV TYPEN	1		CORD CLIP
112	984-750	SCHNEIDSCHRAUBE D4X16 MIT FLANSCH	2		TAPPING SCREW (W/FLANGE) D4X16
113	500-239Z		1	(CORD ARMOR D10.7)	CORD
113	500-390Z		1	(CORD ARMOR D10.7) FOR EUROPE	CORD
113	500-235Z	ANSCHLUSSKABEL MIT STECKER BITTE 714500	1	(CORD ARMOR D8.2) FOR SAU	CORD
113	500-424Z		1	(CORD ARMOR D8.2) FOR KUW	CORD
501	321-325	Transportkoffer DH40MR Neue Art -Nr 322	1		CASE
502	981-840	HAMMERFETT (A) 30G	1		GREASE (A) FOR HAMMER.HAMMER DRILL (30
503	943-277	INBUSSCHLUSSEL D3(M4)	1		HEX. BAR WRENCH 3MM
504	944-458	INBUSSCHLUSSEL D4(M5)	1		HEX. BAR WRENCH 4MM
505	944-459	INBUSSCHLUSSEL D5(M6)	1		HEX. BAR WRENCH 5MM
601	985-721		1		DRILL BIT D16.0X280 (HEX. SHANK TYPE)
602	985-720		1		DRILL BIT D16.0X400 (HEX. SHANK TYPE)
603	985-722		1		DRILL BIT D16.0X505 (HEX. SHANK TYPE)
	991-				DRILL BIT

604	330		1	D16.0X550 (HEX. SHANK TYPE)
605	991- 331		1	DRILL BIT D18.0X550 (HEX. SHANK TYPE)
606	985- 724		1	DRILL BIT D19.0X280 (HEX. SHANK TYPE)
607	985- 723		1	DRILL BIT D19.0X400 (HEX. SHANK TYPE)
608	985- 725		1	DRILL BIT D19.0X505 (HEX. SHANK TYPE)
609	991- 332	HM-BOHRER 19X550 2-S 13MM 6-KANT Neue Ar	1	DRILL BIT D19.0X550 (HEX. SHANK TYPE)
610	991- 334		1	DRILL BIT D20.0X505 (HEX. SHANK TYPE)
611	991- 333		1	DRILL BIT D20.0X550 (HEX. SHANK TYPE)
612	985- 727		1	DRILL BIT D22.0X280 (HEX. SHANK TYPE)
613	985- 726		1	DRILL BIT D22.0X400 (HEX. SHANK TYPE)
614	985- 728		1	DRILL BIT D22.0X505 (HEX. SHANK TYPE)
615	991- 335		1	DRILL BIT D22.0X550 (HEX. SHANK TYPE)
616	985- 730		1	DRILL BIT D25.0X280 (HEX. SHANK TYPE)
617	985- 729		1	DRILL BIT D25.0X400 (HEX. SHANK TYPE)
618	985- 731		1	DRILL BIT D25.0X505 (HEX. SHANK TYPE)
619	991- 336		1	DRILL BIT D25.0X550 (HEX. SHANK TYPE)
620	985-		1	DRILL BIT D28.0X280 (HEX.



	733				SHANK TYPE)
621	985-732	HM-BOHRER 28X400 2-S 13MM 6-KANT Neue Ar	1		DRILL BIT D28.0X400 (HEX. SHANK TYPE)
622	985-734		1		DRILL BIT D28.0X505 (HEX. SHANK TYPE)
623	991-337		1		DRILL BIT D28.0X550 (HEX. SHANK TYPE)
624	991-338		1		DRILL BIT D30.0X550 (HEX. SHANK TYPE)
625	985-736	HM-BOHRER 32X280 2-S 13MM 6-KANT Nicht m	1		DRILL BIT D32.0X280 (HEX. SHANK TYPE)
626	985-735	HM-BOHRER 32X400 2-S 13MM 6-KANT Neue Ar	1		DRILL BIT D32.0X400 (HEX. SHANK TYPE)
627	985-737		1		DRILL BIT D32.0X505 (HEX. SHANK TYPE)
628	991-339	HM-BOHRER 32X550 2-S 13MM 6-KANT Neue Ar	1		DRILL BIT D32.0X550 (HEX. SHANK TYPE)
629	991-340	HM-BOHRER 35X550 2-S 13MM 6-KANT Neue Ar	1		DRILL BIT D35.0X550 (HEX. SHANK TYPE)
630	985-739		1		DRILL BIT D38.0X280 (HEX. SHANK TYPE)
631	985-738		1		DRILL BIT D38.0X400 (HEX. SHANK TYPE)
632	985-740		1		DRILL BIT D38.0X505 (HEX. SHANK TYPE)
633	991-341	HM-BOHRER 38X550 2-S 13MM 6-KANT Neue Ar	1		DRILL BIT D38.0X550 (HEX. SHANK TYPE)
634	944-460		1		TAPER SHANK DRILL BIT D11X100
635	944-461		1		TAPER SHANK DRILL BIT D12.3X110
636	993-038		1		TAPER SHANK DRILL BIT D12.7X110

637	944-462		1		TAPER SHANK DRILL BIT D14.3X110
638	944-500		1		TAPER SHANK DRILL BIT D14.5X110
639	944-463		1		TAPER SHANK DRILL BIT D17.5X120
640	944-464		1		TAPER SHANK DRILL BIT D21.5X140
641	985-752		1	INCLUD.643	TAPER SHANK ADAPTER NO.1
642	985-753		1	INCLUD.643	TAPER SHANK ADAPTER NO.2
643	944-477	AUSTREIBKEIL F KONUS A+B	1		COTTER
644	985-754	A-KONUSADAPTER 13MM 6-KANT	1		A-TAPER SHANK ADAPTER (D11.0-17.5)
645	985-755		1		B-TAPER SHANK ADAPTER (D21.5)
646	992-813	ADAPTER FUR BOHRER MIT KONUS A	1		K-TAPER SHANK ADAPTER
647	985-750		1		DRILL ADAPTER NO.1 (D11.0-17.5)
648	985-751		1		DRILL ADAPTER NO.2 (D21.5)
649	955-994	BOHRKRONE 25 X 150	1		CORE BIT 25MM
650	955-995		1		CORE BIT 29MM
651	955-996		1	INCLUD.652	CORE BIT 32MM
652	955-997		1		GUIDE PLATE (FOR CORE BIT 32MM)
653	955-998	BOHRKRONE 35 X 150	1	INCLUD.654	CORE BIT 35MM
654	955-999		1		GUIDE PLATE (FOR CORE BIT 35MM)
655	956-000		1	INCLUD.656	CORE BIT 38MM
656	956-001		1		GUIDE PLATE (FOR CORE BIT 38MM)
657	955-154	BOHRKRONE 45 X 150	1	INCLUD.658	CORE BIT 45MM

658	955-166		1		GUIDE PLATE (FOR CORE BIT 45MM)
659	955-155	HAMMERBOHRKRONE o54X150	1	INCLUD.660	CORE BIT 54MM
660	955-167		1		GUIDE PLATE (FOR CORE BIT 54MM)
661	956-002	HAMMER-BOHRKRONE o64X116	1	INCLUD.662	CORE BIT 64MM
662	956-003	FUHRUNGSPLATTE BOHRKRONE 64MM	1		GUIDE PLATE (FOR CORE BIT 64MM)
663	955-157	HAMMER-BOHRKRONE o79X150	1	INCLUD.664	CORE BIT 79MM
664	955-168	FUHRUNGSPLATTE BOHRKRONE 79MM	1		GUIDE PLATE (FOR CORE BIT 79MM)
665	956-004	HAMMER-BOHRKRONE o94X116	1	INCLUD.666	CORE BIT 94MM
666	956-005	FUHRUNGSPLATTE BOHRKRONE 94MM	1		GUIDE PLATE (FOR CORE BIT 94MM)
667	955-159	HAMMER-BOHRKRONE o105X150	1	INCLUD.668	CORE BIT 105MM
668	955-169	FUHRUNGSPLATTE BOHRKRONE 105MM	1		GUIDE PLATE (FOR CORE BIT 105MM)
669	956-008	AUFNAHMESCHAFT FUR BOHRKRONEN	1		CORE BIT SHANK (B) 300L (FOR D25-35)
670	955-163	AUFNAHMESCHAFT(A)D38 F BOHRKRONEN	1		CORE BIT SHANK (A) 300L (FOR D38-120)
671	956-009	ZENTRIERSTIFT	1		CENTER PIN (B) 147L FOR CORE BIT D32-3
672	955-165		1		CENTER PIN (A) 133L FOR CORE BIT D38-1
673	992-814	HAMMERBOHRKRONE 65X116 MM	1		CORE BIT 65MM
674	992-815	HAMMERBOHRKRONE 80X116 MM	1		CORE BIT 80MM
675	992-816	HAMMERBOHRKRONE 90X116 MM	1		CORE BIT 90MM
676	992-817	HAMMERBOHRKRONE 100X116 MM	1		CORE BIT 100MM
677	992-818	HAMMERBOHRKRONE 105X116 MM	1		CORE BIT 105MM
678	992-819	AUFNAHMESCHAFT FUR (1000W) KRONEN	1		CORE BIT SHANK (C)
	903-	ZENTRIERSTIFT FUR 1000W			

679	901	KRONEN	1		CENTER PIN (C)
680	985-756		1		"ANCHOR ADAPTER NO.20 W1/4""
681	985-757		1		"ANCHOR ADAPTER NO.25 W5/16""
682	985-758		1		"ANCHOR ADAPTER NO.30 W3/8""
683	985-759		1		"ANCHOR ADAPTER NO.40 W1/2""
684	985-760		1		"ANCHOR ADAPTER NO.50 W5/8""
685	981-929	HOHLMEISSEL 26X300 17MM 6-KANT	1		ANCHOR ADAPTER NO.30
686	981-930	Ankeradapter No 40	1		ANCHOR ADAPTER NO.40
687	981-931	Ankeradapter No 50	1		ANCHOR ADAPTER NO.50
688	985-761	RATIOADAPTER 13MM 6-KANT	1		RATIO SHANK ADAPTER
689	944-574		1		DRIFT KEY
691	981-922	SPITZMEISSEL 280MM 17MM 6-KANT Neue Art	1		BULL POINT 280MM (ROUND SHANK TYPE)
692	981-923	SPITZMEISSEL 450MM 17MM 6-KANT Neue Art	1		BULL POINT 450MM (ROUND SHANK TYPE)
693	981-925	FLACHMEISSEL 280X20 17MM 6-KANT Neue Art	1		COLD CHISEL 280MM (ROUND SHANK TYPE)
694	981-926	FLACHMEISSEL 450X20 17MM 6-KANT Neue Art	1		COLD CHISEL 450MM (ROUND SHANK TYPE)
695	981-924	SPATMEISSEL 280X50 17MM 6-KANT Neue Art	1		CUTTER W45X280L (ROUND SHANK TYPE)
696	956-126	SCHAUFEL 405MM 17MM 6-KANT	1		SCOOP 405L (ROUND SHANK TYPE)
697	955-181	RAMMPLATTE o140MM DH40YB/H41SA	1		RAMMER 140MM
698	955-183		1		BUSHING TOOL

699	955-186	AUFNAHMASCH L250 13MM 6-KANT FUR RAMM-U	1	SHANK 250L (FOR HAMMER AND BUSHING TOO)
700	320-859		1	SYRINGE (BLOW-OUT BULB TYPE)
701	318-085	AUSBLASER DH30PB/DH30PC	1	SYRINGE (BELLOWS TYPE)
702	308-471	HAMMERFETT 70G TUBE	1	GREASE FOR HAMMER.HAMMER DRILL (70G)
703	980-927	HAMMERFETT 500G	1	GREASE FOR HAMMER.HAMMER DRILL (500G)
704	317-341		1	DUST COLLECTOR (FOR HAMMER DRILL C)