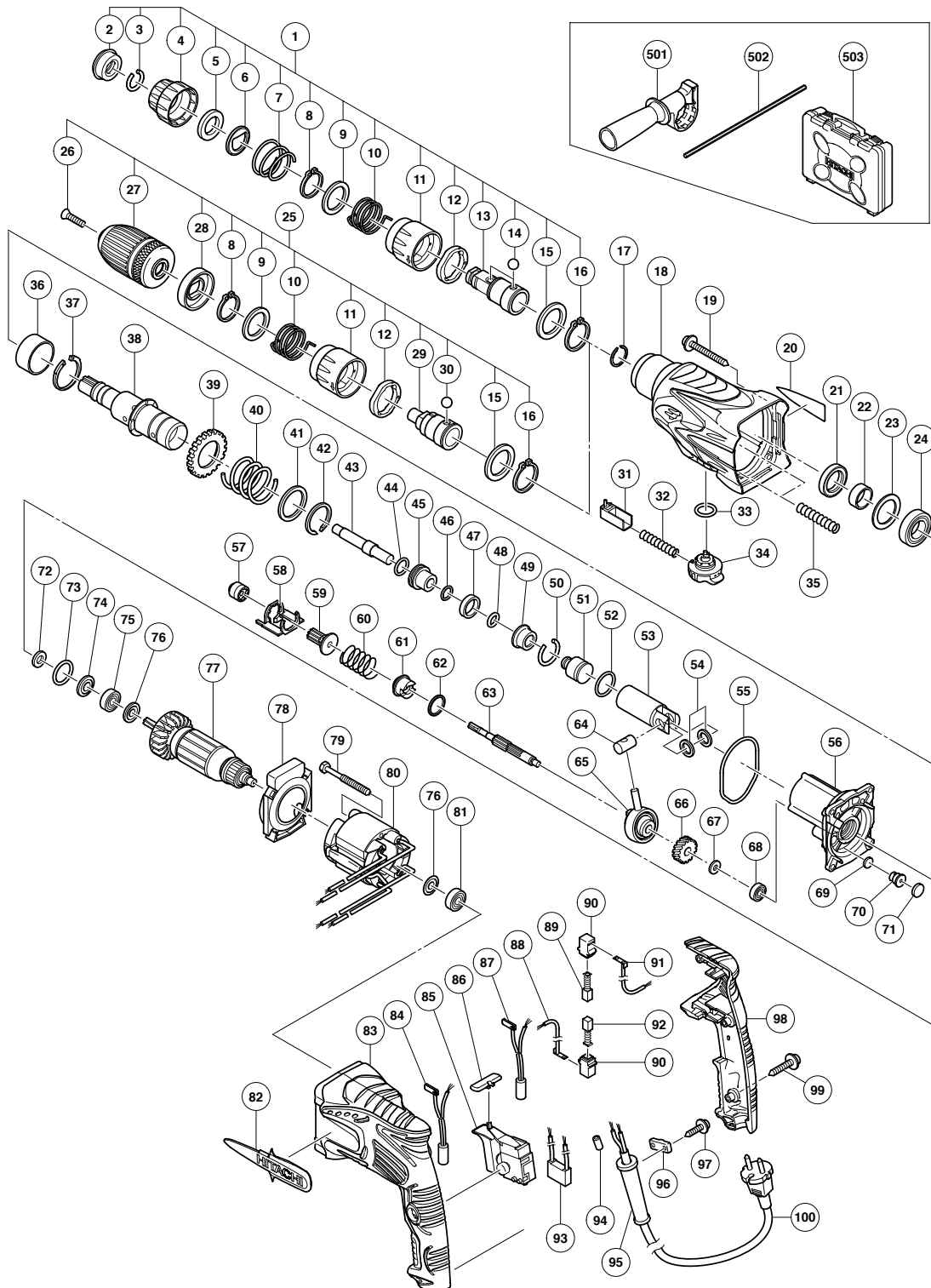


## ELECTRIC TOOL PARTS LIST

■ ROTARY HAMMER  
Model DH 24PM

2006 · 9 · 15  
(E1)



**PARTS**

DH 24PM

| ITEM NO. | CODE NO. | DESCRIPTION                             | NO. USED | REMARKS                     |
|----------|----------|---|----------|-----------------------------|
| 1        | 326-516  | BIT HOLDER ASS'Y                        | 1        | INCLUD. 2-16                |
| 2        | 306-345  | FRONT CAP                               | 1        |                             |
| 3        | 306-340  | STOPPER RING                            | 1        |                             |
| 4        | 324-527  | GRIP                                    | 1        |                             |
| 5        | 324-528  | BALL HOLDER                             | 1        |                             |
| 6        | 324-526  | HOLDER PLATE                            | 1        |                             |
| 7        | 322-812  | HOLDER SPRING                           | 1        |                             |
| 8        | 965-469  | RETAINING RING FOR D25 SHAFT            | 2        |                             |
| 9        | 326-520  | WASHER (B)                              | 2        |                             |
| 10       | 326-519  | SPRING                                  | 2        |                             |
| 11       | 326-387  | LOCK GRIP                               | 2        |                             |
| 12       | 326-661  | LOCK RING                               | 2        |                             |
| 13       | 326-517  | BIT HOLDER                              | 1        |                             |
| 14       | 959-156  | STEEL BALL D7.0 (10 PCS.)               | 3        |                             |
| 15       | 326-518  | WASHER (A)                              | 2        |                             |
| 16       | 962-553  | RETAINING RING FOR D28 SHAFT            | 2        |                             |
| 17       | 306-993  | RETAINING RING                          | 1        |                             |
| 18       | 324-605  | GEAR COVER ASS'Y                        | 1        | INCLUD. 57                  |
| 19       | 301-654  | TAPPING SCREW (W/FLANGE) D5X35          | 4        |                             |
| 20       |          | NAME PLATE                              | 1        |                             |
| 21       | 307-688  | OIL SEAL                                | 1        |                             |
| 22       | 322-815  | SLEEVE                                  | 1        |                             |
| 23       | 323-232  | FELT PACKING (B)                        | 1        |                             |
| 24       | 690-4DD  | BALL BEARING 6904DDPS2L                 | 1        |                             |
| 25       | 326-271  | CHUCK HOLDER ASS'Y                      | 1        | INCLUD. 8-12, 15, 16, 26-30 |
| 26       | 995-344  | FLAT HD. SCREW (A) (LEFT HAND) M6X25    | 1        |                             |
| 27       | 322-357  | DRILL CHUCK 13VLRH-N (W/O CHUCK WRENCH) | 1        |                             |
| 28       | 326-527  | STOPPER                                 | 1        |                             |
| 29       | 326-526  | CHUCK HOLDER                            | 1        |                             |
| 30       | 959-156  | STEEL BALL D7.0 (10 PCS.)               | 2        |                             |
| 31       | 324-530  | PUSHING BUTTON                          | 1        |                             |
| 32       | 317-223  | PUSHING SPRING                          | 1        |                             |
| 33       | 878-885  | O-RING (S-18)                           | 1        |                             |
| 34       | 325-059  | CHANGE LEVER                            | 1        |                             |
| 35       | 317-238  | SPRING (B)                              | 2        |                             |
| 36       | 324-522  | SLEEVE (A)                              | 1        |                             |
| 37       | 322-813  | RETAINING RING 37MM                     | 1        |                             |
| 38       | 326-521  | CYLINDER                                | 1        |                             |
| 39       | 323-185  | SECOND GEAR                             | 1        |                             |
| 40       | 317-233  | SPRING (A)                              | 1        |                             |
| 41       | 317-234  | WASHER (A)                              | 1        |                             |
| 42       | 317-235  | RETAINING RING D30                      | 1        |                             |
| 43       | 326-522  | SECOND HAMMER                           | 1        |                             |
| 44       | 944-486  | O-RING (1AP-20)                         | 1        |                             |
| 45       | 324-523  | HAMMER HOLDER                           | 1        |                             |
| 46       | 322-802  | O-RING (B)                              | 1        |                             |
| 47       | 322-805  | DAMPER (A)                              | 1        |                             |
| 48       | 322-808  | O-RING (C)                              | 1        |                             |
| 49       | 324-524  | DAMPER HOLDER                           | 1        |                             |
| 50       | 322-807  | STOPPER RING                            | 1        |                             |
| 51       | 324-535  | STRIKER                                 | 1        |                             |

**PARTS**

DH 24PM

| ITEM NO. | CODE NO. | DESCRIPTION              | NO. USED                               | REMARKS       |                     |
|----------|----------|--------------------------|--|---------------|---------------------|
| 52       | 322-834  | O-RING (I.D. 16)         | 1                                      |               |                     |
| 53       | 324-534  | PISTON                   | 1                                      |               |                     |
| 54       | 322-799  | WASHER (C)               | 2                                      |               |                     |
| 55       | 322-793  | O-RING (I.D. 66.5)       | 1                                      |               |                     |
| 56       | 324-542  | INNER COVER ASS'Y        | 1                                      | INCLUD. 69-71 |                     |
| 57       | 323-249  | PINION SLEEVE            | 1                                      |               |                     |
| 58       | 318-522  | LOCK PLATE               | 1                                      |               |                     |
| 59       | 323-181  | SECOND PINION            | 1                                      |               |                     |
| 60       | 323-182  | CLUTCH SPRING            | 1                                      |               |                     |
| 61       | 324-606  | CLUTCH                   | 1                                      |               |                     |
| 62       | 326-524  | WASHER (D)               | 1                                      |               |                     |
| 63       | 323-180  | SECOND SHAFT             | 1                                      |               |                     |
| 64       | 322-798  | PISTON PIN               | 1                                      |               |                     |
| 65       | 324-533  | RECIPROCATING BEARING    | 1                                      |               |                     |
| 66       | 322-797  | FIRST GEAR               | 1                                      |               |                     |
| 67       | 322-795  | SPACER                   | 1                                      |               |                     |
| 68       | 626-VVM  | BALL BEARING 626VVC2PS2L | 1                                      |               |                     |
| 69       | 324-543  | FELT PACKING (A)         | 1                                      |               |                     |
| 70       | 324-545  | VALVE                    | 1                                      |               |                     |
| 71       | 324-544  | FELT PACKING (B)         | 1                                      |               |                     |
| 72       | 322-816  | FELT PACKING             | 1                                      |               |                     |
| 73       | 876-796  | O-RING (P-22)            | 1                                      |               |                     |
| 74       | 322-818  | PACKING WASHER           | 1                                      |               |                     |
| 75       | 608-DDM  | BALL BEARING 608DDC2PS2L | 1                                      |               |                     |
| 76       | 982-631  | WASHER (A)               | 2                                      |               |                     |
| *        | 77       | 360-720U                 | ARMATURE ASS'Y 110V-120V               | 1             | INCLUD. 75, 76, 81  |
| *        | 77       | 360-720E                 | ARMATURE 220V-230V                     | 1             |                     |
| *        | 77       | 360-720F                 | ARMATURE 240V                          | 1             |                     |
|          | 78       | 324-531                  | FAN GUIDE                              | 1             |                     |
|          | 79       | 961-672                  | HEX. HD. TAPPING SCREW D4X50           | 2             |                     |
| *        | 80       | 340-635C                 | STATOR 110V-120V                       | 1             |                     |
| *        | 80       | 340-635E                 | STATOR 220V-230V                       | 1             |                     |
| *        | 80       | 340-635F                 | STATOR 240V                            | 1             |                     |
|          | 81       | 608-VVM                  | BALL BEARING 608VVC2PS2L               | 1             |                     |
|          | 82       | 326-523                  | HITACHI PLATE                          | 1             |                     |
|          | 83       | 324-553                  | HOUSING                                | 1             |                     |
| *        | 84       | 324-549                  | CHOKE COIL (A) BROWN                   | 1             |                     |
| *        | 84       | 324-550                  | CHOKE COIL (A) BROWN                   | 1             | FOR GBR (110V)      |
|          | 85       | 324-536                  | SWITCH (1P PILLAR TYPE)                | 1             |                     |
|          | 86       | 322-853                  | PUSHING BUTTON                         | 1             |                     |
| *        | 87       | 324-551                  | CHOKE COIL (A) BLUE                    | 1             |                     |
| *        | 87       | 324-552                  | CHOKE COIL (A) BLUE                    | 1             | FOR GBR (110V)      |
| *        | 88       | 324-538                  | INTERNAL WIRE (A) (BLUE)               | 1             | FOR USA, CAN        |
|          | 89       | 999-041                  | CARBON BRUSH (1 PAIR)                  | 1             |                     |
|          | 90       | 955-203                  | BRUSH HOLDER                           | 2             |                     |
| *        | 91       | 324-537                  | INTERNAL WIRE (A) (BROWN)              | 1             | FOR USA, CAN        |
|          | 92       | 999-072                  | CARBON BRUSH (AUTO STOP TYPE) (1 PAIR) | 1             |                     |
| *        | 93       | 930-039                  | NOISE SUPPRESSOR                       | 1             | EXCEPT FOR USA, CAN |
| *        | 94       | 981-373                  | TUBE (D)                               | 2             | FOR CORD            |
|          | 95       | 953-327                  | CORD ARMOR D8.8                        | 1             |                     |
|          | 96       | 937-631                  | CORD CLIP                              | 1             |                     |



## STANDARD ACCESSORIES

DH 24PM

| ITEM NO. | CODE NO. | DESCRIPTION | NO. USED | REMARKS      |
|----------|----------|-------------|----------|--------------|
| 501      | 324-548  | SIDE HANDLE | 1        |              |
| * 502    | 303-709  | DEPTH GAUGE | 1        |              |
| * 502    | 310-331  | DEPTH GAUGE | 1        | FOR USA, CAN |
| 503      | 326-525  | CASE        | 1        |              |

## OPTIONAL ACCESSORIES

| ITEM NO. | CODE NO. | DESCRIPTION                               | NO. USED | REMARKS          |
|----------|----------|---|----------|------------------|
| 601      | 981-840  | GREASE (A) FOR HAMMER. HAMMER DRILL (30G) | 1        |                  |
| 602      | 308-471  | GREASE FOR HAMMER. HAMMER DRILL (70G)     | 1        |                  |
| 603      | 980-927  | GREASE FOR HAMMER. HAMMER DRILL (500G)    | 1        |                  |
| 604      | 306-885  | DUST COLLECTOR (B) ASS'Y                  | 1        | INCLUD. 605, 613 |
| 605      | 986-802  | DUST COLLECTOR ASS'Y                      | 1        | INCLUD. 606-612  |
| 606      | 986-803  | DUST COVER                                | 1        |                  |
| 607      | 986-804  | SEAL COVER                                | 1        |                  |
| 608      | 948-310  | RETAINING RING FOR D30 SHAFT              | 1        |                  |
| 609      | 958-063  | WASHER                                    | 1        |                  |
| 610      | 959-150  | STEEL BALL D6.35 (10 PCS.)                | 19       |                  |
| 611      | 986-805  | OUTER RACE                                | 1        |                  |
| 612      | 986-806  | SOCKET                                    | 1        |                  |
| 613      | 306-910  | SOCKET ADAPTER (B)                        | 1        |                  |
| 614      | 971-787  | DUST CUP                                  | 1        |                  |
| 615      | 931-844  | STOPPER                                   | 1        |                  |
| 616      | 321-814  | DRILL CHUCK 13VLRB-D                      | 1        | INCLUD. 617      |
| 617      | 995-344  | FLAT HD. SCREW (A) (LEFT HAND) M6X25      | 1        |                  |
| 618      | 321-813  | DRILL CHUCK 13VLD-D                       | 1        |                  |
| 619      | 971-511Z | + DRIVER BIT (A) NO. 2 25L                | 1        |                  |
| 620      | 971-512Z | + DRIVER BIT (A) NO. 3 25L                | 1        |                  |
| 621      | 944-477  | COTTER                                    | 1        |                  |
| 622      | 982-684  | CENTER PIN (A) 109L FOR CORE BIT D32-38   | 1        |                  |
| 623      | 982-685  | CENTER PIN (B) 104L FOR CORE BIT D45-90   | 1        |                  |
| 624      | 982-672  | CORE BIT (A) 25MM                         | 1        |                  |
| 625      | 982-673  | CORE BIT (A) 29MM                         | 1        |                  |
| 626      | 982-674  | CORE BIT (A) 32MM                         | 1        | INCLUD. 627      |
| 627      | 982-686  | GUIDE PLATE (FOR CORE BIT 32MM)           | 1        |                  |
| 628      | 982-675  | CORE BIT (A) 35MM                         | 1        | INCLUD. 629      |
| 629      | 982-687  | GUIDE PLATE (FOR CORE BIT 35MM)           | 1        |                  |
| 630      | 982-676  | CORE BIT (A) 38MM                         | 1        | INCLUD. 631      |
| 631      | 982-688  | GUIDE PLATE (FOR CORE BIT 38MM)           | 1        |                  |
| 632      | 982-677  | CORE BIT (B) 45MM                         | 1        | INCLUD. 633      |
| 633      | 982-689  | GUIDE PLATE (FOR CORE BIT 45MM)           | 1        |                  |
| 634      | 982-678  | CORE BIT (B) 50MM                         | 1        | INCLUD. 635      |
| 635      | 982-690  | GUIDE PLATE (FOR CORE BIT 50MM)           | 1        |                  |
| 636      | 971-794  | ANCHOR SETTING ADAPTER A W1/4" (MANUAL)   | 1        |                  |
| 637      | 971-795  | ANCHOR SETTING ADAPTER A W5/16" (MANUAL)  | 1        |                  |
| 638      | 971-796  | ANCHOR SETTING ADAPTER A W3/8" (MANUAL)   | 1        |                  |
| 639      | 971-797  | ANCHOR SETTING ADAPTER A W1/2" (MANUAL)   | 1        |                  |
| 640      | 971-798  | ANCHOR SETTING ADAPTER A W5/8" (MANUAL)   | 1        |                  |
| 641      | 971-799  | ANCHOR SETTING ADAPTER B W1/4" (MANUAL)   | 1        |                  |

