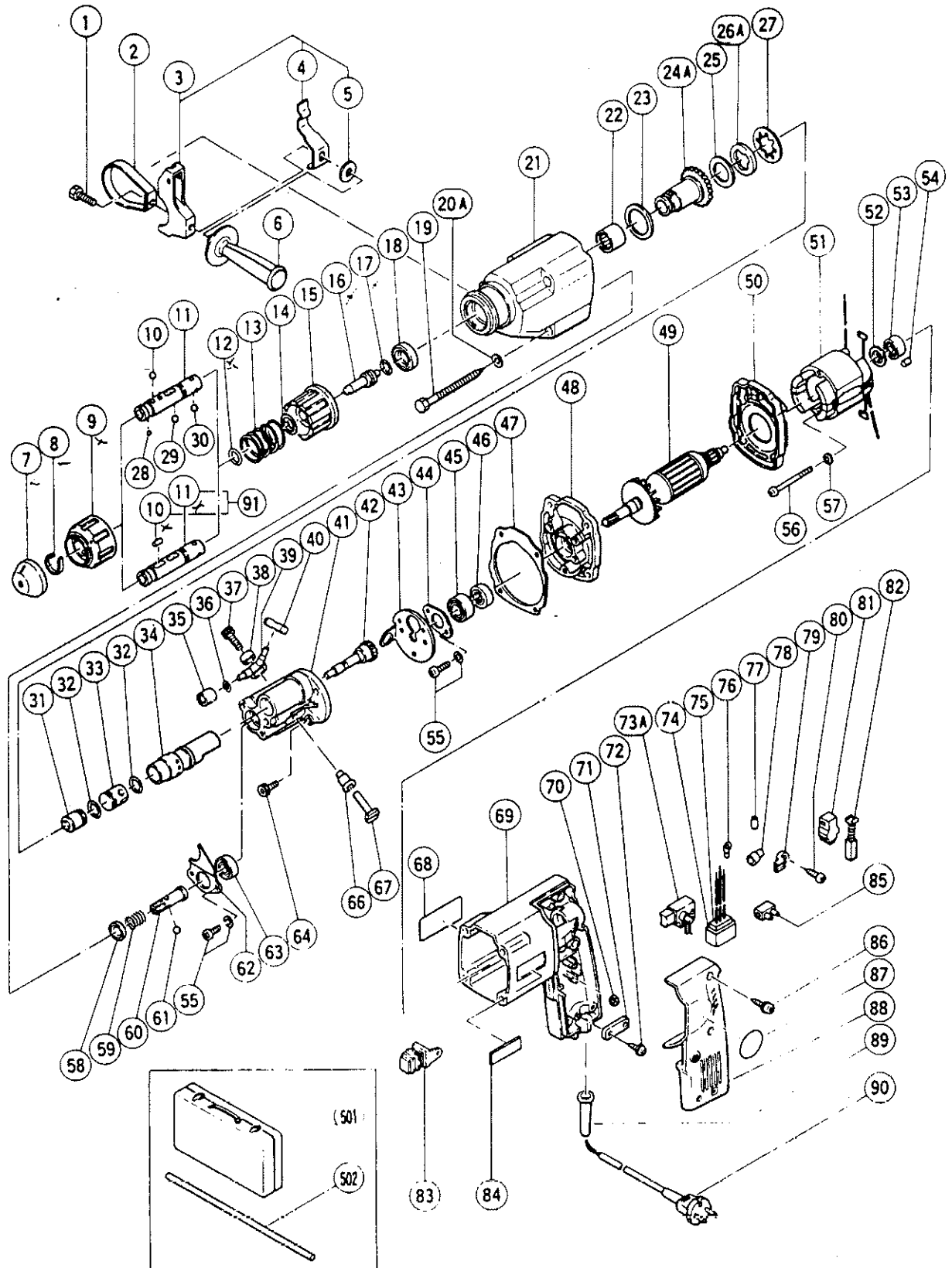


ELECTRIC TOOL PARTS LIST

■ HAMMER DRILL
Model DH16V

1991 · 8 · 21
(E3)



PARTS

DH 16V

ITEM NO.	CODE NO.	DESCRIPTION	NO. USED	REMARKS
1	949-628	BOLT M8X30 (10 PCS.)	1	
2	984-257	BAND	1	
3	984-279	HANDLE HOLDER ASS'Y	1	INCLUD.4.5
4	984-280	STOPPER PLATE	1	
5	984-281	WASHER (E)	1	
6	980-901	SIDE HANDLE	1	
7	984-255	FRONT CAP	1	
8	984-254	C - TYPE SPRING	1	
9	991-913	GRIP	1	
10	971-812	NEEDLE ROLLER	2	
10	959-151	STEEL BALL D7.14 (10 PCS.)	4	
11	991-920	RETAINER SLEEVE (E) (FOR ROUND SHANK)	1	FOR NEEDLE ROLLER TYPE
11	991-912	RETAINER SLEEVE (C) (FOR SQUARE SHANK)	1	FOR NEEDLE ROLLER TYPE
11	991-910	RETAINER SLEEVE (FOR SQUARE SHANK)	1	FOR STEEL BALL TYPE (TILL 2.1987)
11	991-911	RETAINER SLEEVE (B) (FOR SQUARE SHANK)	2	FOR STEEL BALL TYPE
12	984-250	O - RING (B)	1	
13	984-252	RETAINER SPRING	1	
14	876-796	O - RING (P - 22)	1	
15	984-251	CHANGE RING	1	
16	984-249	SECOND HAMMER	1	
17	872-645	O - RING (P - 9)	1	
18	984-263	OIL SEAL (B)	1	
19	984-271	HEX. HD. TAPPING SCREW D5X75	4	
20A	998-181	WASHER	4	
21	984-226	GEAR COVER ASS'Y	1	INCLUD.18.22
22	984-262	NEEDLE BEARING (B) (HK2526)	1	
23	984-248	WASHER (B)	1	
24A	998-184	SECOND GEAR	1	
25	984-246	WASHER (A)	1	
26A	998-179	DAMPER	1	
27	984-244	DAMPER WASHER	1	
28	959-154	STEEL BALL D5.556 (10 PCS.)	1	
29	959-151	STEEL BALL D7.14 (10 PCS.)	2	
30	959-150	STEEL BALL D6.35 (10 PCS.)	3	
31	984-243	STRIKER	1	
32	980-884	O - RING (A)	2	
33	984-242	PISTON	1	
34	984-240	CYLINDER	1	
35	984-232	NEEDLE BEARING (A) (NK6/10T2)	1	
36	984-233	RETAINING RING FOR D13 HOLE	1	
37	949-680	HEX. SOCKET HD. BOLT M6X20 (10 PCS.)	1	
38	984-273	COLLAR	1	
39	984-229	DRIVE ROD	1	
40	984-241	PISTON PIN	1	
41	984-235	BEARING HOLDER	1	
42	984-234	CRANK SHAFT	1	
43	984-274	PIVOT HOLDER	1	
44	984-236	BEARING COVER (B)	1	
45	600-1VV	BALL BEARING 6001VVCMP2L	1	
46	984-225	OIL SEAL (A)	1	
47	984-224	SEAL PACKING	1	

* : ALTERNATIVE PARTS

08 - 91

PARTS

DH 16V

ITEM NO.	CODE NO.	DESCRIPTION	NO. USED	REMARKS
48	984-223	INNER COVER	1	
49	984-261C	ARMATURE 110V - 115V	1	
49	984-261D	ARMATURE 120V - 127V	1	
49	984-261E	ARMATURE 220V - 230V	1	
49	984-261F	ARMATURE 240V	1	
49	984-261G	ARMATURE 220V - 230V	1	FOR ITA,FRG,FRA,HOL,DEN,FIN,SWE,AUT, NOR,SUI
49	984-261H	ARMATURE 240V	1	FOR GBR
49	984-261J	ARMATURE 110V	1	FOR GBR
50	984-222	FAN GUIDE	1	
51	971-665U	STATOR 110V - 127V	1	
51	971-665J	STATOR 220V - 230V	1	
51	971-665H	STATOR 240V	1	
51	971-665G	STATOR 220V - 230V	1	FOR ITA,FRG,FRA,HOL,DEN,SWE,SUI
51	971-665L	STATOR 220V	1	FOR FIN,AUT
51	971-665F	STATOR 240V	1	FOR GBR
51	971-665Z	STATOR 110V	1	FOR GBR
52	982-631	WASHER (A)	1	
53	608-VVM	BALL BEARING 608VVMC2EPS2L	1	
54	946-362	BEARING LOCK	1	
55	987-201	SEAL LOCK SCREW (W/SP. WASHER) M4X10	4	
56	949-278	MACHINE SCREW M4X55 (10 PCS.)	2	
57	949-453	SPRING WASHER M4 (10 PCS.)	2	
58	984-239	PUSHING RING	1	
59	984-238	SPRING	1	
60	984-237	SECOND PINION	1	
61	959-149	STEEL BALL D4.78 (10 PCS.)	3	
62	984-268	BEARING COVER (A)	1	
63	600-0VV	BALL BEARING 6000VVCMP2S	1	
64	990-079	SEAL LOCK HEX. SOCKET HD. BOLT M5X16	3	
66	984-228	PIVOT SLEEVE	1	
67	984-230	PIVOT	1	
68		NAME PLATE	1	
69	984-220	HOUSING	1	
70	949-554	NUT M4 (10 PCS.)	2	
71	937-631	CORD CLIP	1	
72	930-446	TAPPING SCREW (W/WASHER) D4X16	2	
73A	991-630	SWITCH (E) ASS'Y (2P PILLAR TYPE) W/LOCK	1	INCLUD.83
73A	991-631	SWITCH (B) ASS'Y (2P PILLAR TYPE) W/LOCK	1	INCLUD.83
73A	991-923	SWITCH (E) ASS'Y (2P PILLAR TYPE) W/LOCK	1	INCLUD.83 FOR GBR
74	930-153	SUPPORT (B)	1	FOR GBR,ITA,FRG,FRA,HOL,DEN,FIN,SWE, AUT,NOR,SUI
73	950925	<i>Switch</i>		
75	994-273	NOISE SUPPRESSOR	1	
76	980-063	TERMINAL	1	FOR GBR,ITA,FRG,FRA,HOL,DEN,FIN,SWE, AUT,NOR,SUI
77	981-373	TUBE (D)	2	FOR INA,SYR,GBR,ITA,FRG,FRA,HOL,FIN, DEN,SWE,AUT,NOR,SUI
78	959-140	CONNECTOR 50091 (10 PCS.)	1	FOR GBR
79	971-655	HOLDER PIECE	2	
80	954-004	TAPPING SCREW D4X16	2	
81	955-203	BRUSH HOLDER	2	

OPTIONAL ACCESSORIES

DH 16V

ITEM NO.	CODE NO.	DESCRIPTION	NO. USED	REMARKS
601	971-970	DRILL BIT (A) D5.0X119	1	
602	971-971	DRILL BIT (A) D5.0X159	1	
603	984-050	DRILL BIT (A) D5.5X119	1	
604	971-960	DRILL BIT (A) D6.0X159	1	
605	971-972	DRILL BIT (A) D6.5X119	1	
606	971-973	DRILL BIT (A) D6.5X159	1	
607	984-051	DRILL BIT (A) D7.0X159	1	
608	971-961	DRILL BIT (A) D7.5X159	1	
609	971-974	DRILL BIT (A) D8.0X119	1	
610	971-975	DRILL BIT (A) D8.0X159	1	
611	971-993	DRILL BIT (A) D8.5X159	1	
612	971-962	DRILL BIT (A) D8.5X209	1	
613	984-052	DRILL BIT (A) D9.0X159	1	
614	971-976	DRILL BIT (A) D9.5X159	1	
615	971-977	DRILL BIT (A) D10.0X159	1	
616	971-963	DRILL BIT (A) D10.0X209	1	
617	971-994	DRILL BIT (A) D10.5X159	1	
618	971-978	DRILL BIT (A) D11.0X159	1	
619	971-979	DRILL BIT (A) D12.0X159	1	
620	971-980	DRILL BIT (A) D12.0X209	1	
621	971-981	DRILL BIT (A) D12.3X159	1	
622	971-982	DRILL BIT (A) D12.5X159	1	
623	971-995	DRILL BIT (A) D12.7X159	1	
624	971-983	DRILL BIT (A) D13.0X159	1	
625	984-053	DRILL BIT (B) D14.0X159	1	
626	971-984	DRILL BIT (B) D14.3X159	1	
627	971-985	DRILL BIT (B) D14.5X159	1	
628	984-054	DRILL BIT (B) D15.0X159	1	
629	971-986	DRILL BIT (B) D16.0X209	1	
630	971-987	DRILL BIT (B) D16.0X359	1	
631	971-804	ANCHOR SETTING ADAPTER A W1/4"(ELECTRIC)	1	
632	971-805	ANCHOR SETTING ADAPTER A W5/16"(ELECTRIC)	1	
633	971-806	ANCHOR SETTING ADAPTER A W3/8"(ELECTRIC)	1	
634	971-807	ANCHOR SETTING ADAPTER B W1/4"(ELECTRIC)	1	
635	971-808	ANCHOR SETTING ADAPTER B W5/16"(ELECTRIC)	1	
636	971-809	ANCHOR SETTING ADAPTER B W3/8"(ELECTRIC)	1	
637	971-794	ANCHOR SETTING ADAPTER A W1/4" (MANUAL)	1	
638	971-795	ANCHOR SETTING ADAPTER A W5/16" (MANUAL)	1	
639	971-796	ANCHOR SETTING ADAPTER A W3/8" (MANUAL)	1	
640	971-799	ANCHOR SETTING ADAPTER B W1/4" (MANUAL)	1	
641	971-800	ANCHOR SETTING ADAPTER B W5/16" (MANUAL)	1	
642	971-801	ANCHOR SETTING ADAPTER B W3/8" (MANUAL)	1	
643	971-787	DUST CUP	1	
644	981-840	GREASE A (30G)	1	
645	980-927	GREASE FOR IMPACT DRILL (500G)	1	
646	950-271	DRILL CHUCK 10VLA	1	INCLUD.647
647	930-119	CHUCK WRENCH 6.5G	1	
648	971-810Z	A - TAPER SHANK ADAPTER	1	
649	980-953	CHUCK ADAPTER (E) (ROUND SHANK)	1	
649	984-276	CHUCK ADAPTER (SQUARE SHANK)	1	TILL 2.1987
649	984-269	CHUCK ADAPTER (B) (SQUARE SHANK)	1	