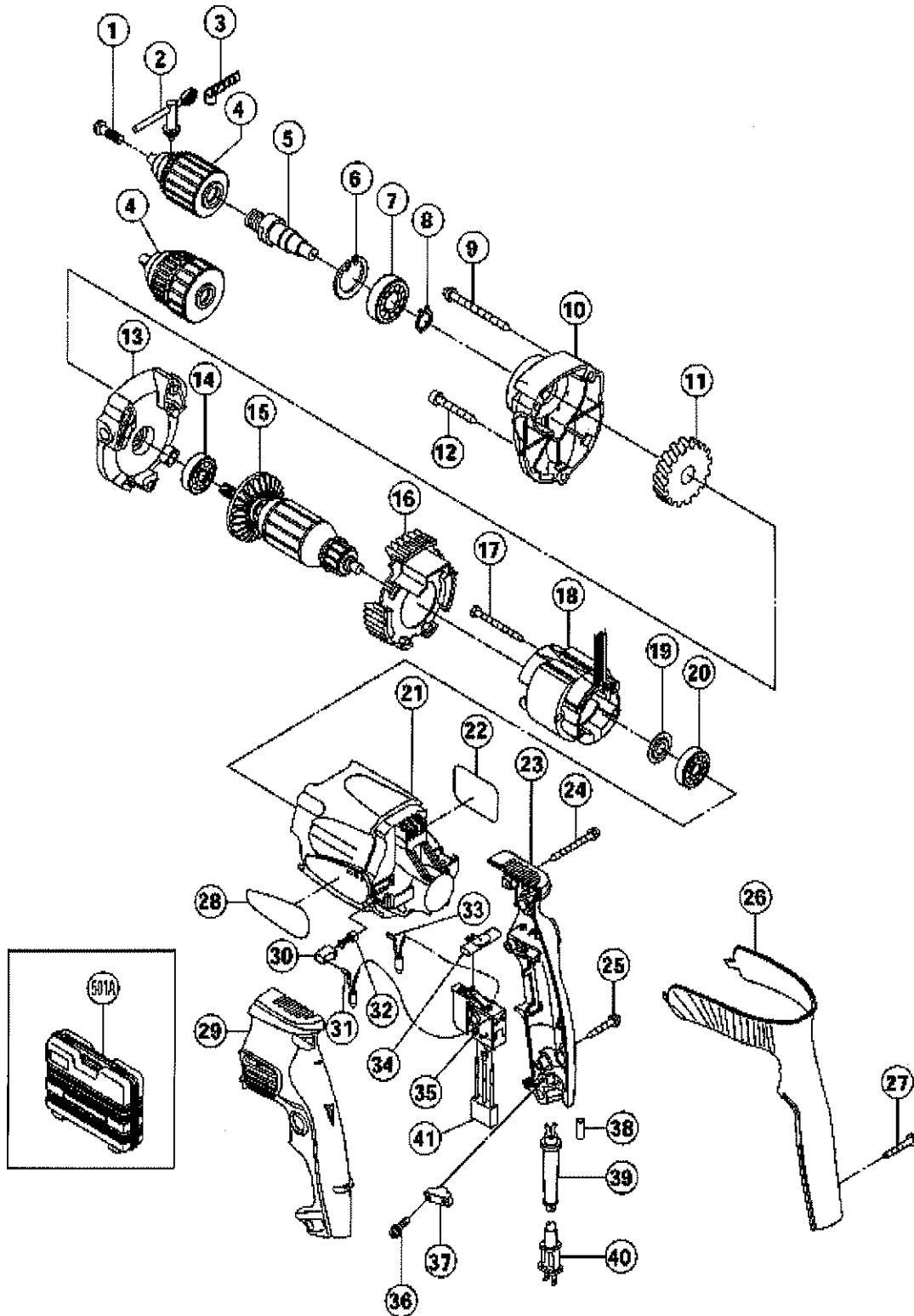


## ELECTRIC TOOL PARTS LIST

■ DRILL  
Model D 10VF

2002.6.1  
(E2-1)



## TEILE

D10VF

Pos. Nr.	Art.Nr.	BESCHREIBUNG	Nr. STUE	KOMMENTAR
1	311-959		1	
2	319-529		1	
3	950-288		1	
* 4	319-342		1	INCLUD.2
* 4	319-343		1	
5	319-335		1	
6	948-001		1	
7	600-2VV		1	
8	939-544		1	
9	317-449		2	
10	319-334		1	
11	319-336		1	
12	316-458		1	
13	319-333		1	
14	608-DDM		1	
* 15	360-542U		1	INCLUD.14,19,20
* 15	360-542E		1	
16	319-329		1	
17	981-421		2	
* 18	340-486C		1	
* 18	340-486D		1	
* 18	340-504E		1	
19	982-631		1	
20	608-VVM		1	
21	319-328		1	
22			1	
23	319-331		1	
24	303-694		2	
25	301-653		1	
26	319-332		1	
27	319-337		2	
28			1	
29	319-330		1	
30	955-203		2	
* 31	319-638		1	FOR USA,CAN
* 31	320-204		1	FOR GBR (110V)
* 31	320-197		1	FOR NZL,EUROPE
32	999-041		2	
* 33	319-637		1	FOR USA,CAN

\*:ALTERNATIVTEILE

## TEILE

## D10VF

Pos. Nr.	Art.Nr.	BESCHREIBUNG	Nr. STUE.	KOMMENTAR
* 33	320-203		1	FOR GBR (110V)
* 33	320-196		1	FOR NZL,EUROPE
34	316-166		1	
* 35	319-339		1	FOR USA,CAN,GBR (110V)
* 35	320-195		1	FOR NZL,EUROPE
36	984-750		2	
37	937-631		1	
38	981-373		2	
39	953-327		1	
* 40	500-240Z		1	(CORD ARMOR D8.8) FOR USA,CAN
* 40	500-439Z		1	(CORD ARMOR D8.8) FOR NZL
* 40	500-461Z		1	(CORD ARMOR D8.8) FOR GBR (110V)
* 40	500-435Z		1	(CORD ARMOR D8.8) FOR GBR (230V)
* 40	500-247Z		1	(CORD ARMOR D8.8) FOR NOR,DEN,SWE,FIN
* 40	500-447Z		1	(CORD ARMOR D8.8) FOR SUI
* 40	500-409Z		1	(CORD ARMOR D8.8) FOR EUROPE
* 41	320-198		1	EXCEPT FOR USA,CAN

## STANDARDZUBEHÖR

Pos. Nr.	Art.Nr.	BESCHREIBUNG	Nr. STUE.	KOMMENTAR
501A	319-543		1	