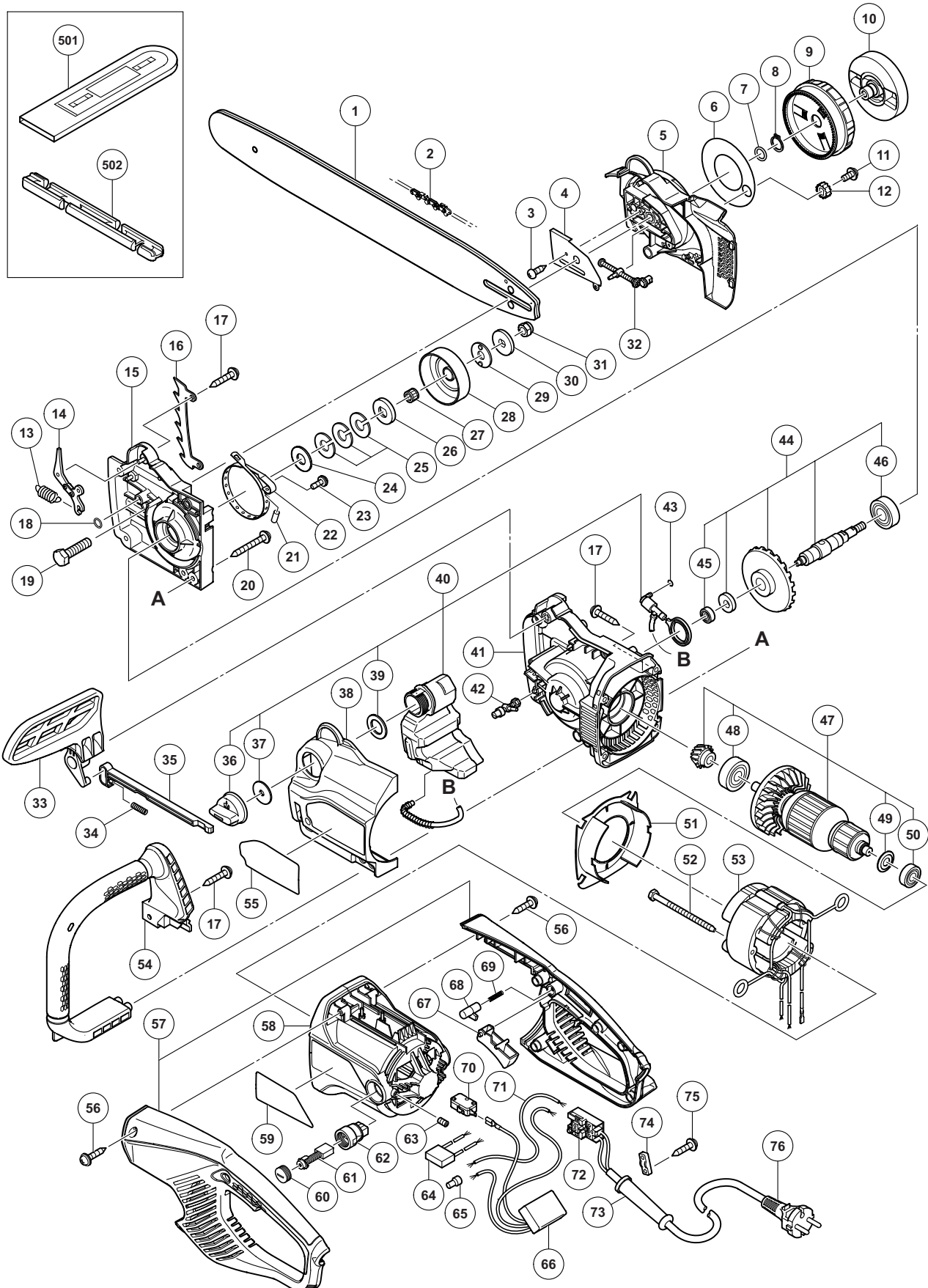


ELECTRIC TOOL PARTS LIST

CHAIN SAW Model CS 45Y

2013·4·17
(E1)



PARTS

CS 45Y

| ITEM NO. | CODE NO. | DESCRIPTION | NO. USED | REMARKS |
|----------|----------|---|----------|--------------------|
| 1 | 335-496 | CHAIN BAR 18 INCH 3/8 SP | 1 | |
| 2 | 669-9182 | SAW CHAIN (3/8 X 18") | 1 | |
| 3 | 696-352 | TAPPING SCREW D3 | 2 | |
| 4 | 335-471 | GUIDE PLATE | 1 | |
| 5 | 335-470 | SIDE COVER (R) | 1 | |
| 6 | 335-688 | DUST SHEET | 1 | |
| 7 | 996-407 | O-RING (1AP-12) | 1 | |
| 8 | 939-543 | RETAINING RING FOR D14 SHAFT (10 PCS.) | 1 | |
| 9 | 335-150 | TENSION DIAL | 1 | |
| 10 | 335-151 | KNOB | 1 | |
| 11 | 315-500 | MACHINE SCREW (W/WASHER) M4 X 8 (BLACK) | 1 | |
| 12 | 335-152 | TENSION GEAR | 1 | |
| 13 | 668-5389 | BRAKE SPRING | 1 | |
| 14 | 669-8587 | BRAKE LINK | 1 | |
| 15 | 335-472 | INNER COVER | 1 | |
| 16 | 335-482 | SPIKE BAR | 1 | |
| 17 | 305-558 | TAPPING SCREW (W/FLANGE) D5 X 25 (BLACK) | 8 | |
| 18 | 997-218 | O-RING (S-6) | 1 | |
| 19 | 949-678 | BOLT M8 X 35 (10 PCS.) | 1 | |
| 20 | 325-336 | TAPPING SCREW D5 X 55 | 2 | |
| 21 | 668-5391 | NEEDLE ROLLER D3 | 1 | |
| 22 | 668-5390 | BRAKE BAND | 1 | |
| 23 | 935-196 | MACHINE SCREW (W/WASHERS) M4 X 12 (BLACK) | 1 | |
| 24 | 335-484 | WASHER (E) | 1 | |
| 25 | 335-485 | SPRING WASHER | 3 | |
| 26 | 335-486 | COLLAR (B) | 1 | |
| 27 | 668-5361 | NEEDLE BEARING (D) | 1 | |
| 28 | 668-5403 | CLUTCH HOUSING | 1 | |
| 29 | 335-487 | WASHER (C) | 1 | |
| 30 | 335-488 | WASHER (D) | 1 | |
| 31 | 975-348 | NYLON NUT M8 | 1 | |
| 32 | 335-966 | CHAIN PULLEY | 1 | |
| 33 | 335-479 | BRAKE HANDLE | 1 | |
| 34 | 335-483 | SPRING (C) | 1 | |
| 35 | 335-480 | SWITCH ROD | 1 | |
| 36 | 335-144 | TANK CAP | 1 | |
| 37 | 335-691 | TANK CAP PACKING | 1 | |
| 38 | 335-477 | SIDE COVER (L) | 1 | |
| 39 | 335-490 | GASKET | 1 | |
| 40 | 335-474 | OIL PUMP ASS'Y | 1 | INCLUD. 36, 37, 39 |
| 41 | 335-476 | GEAR CASE | 1 | |
| 42 | 335-967 | ADJUSTING BOLT | 1 | |
| 43 | 981-317 | O-RING (S-4) | 1 | |
| 44 | 335-473 | SPINDLE GEAR ASS'Y | 1 | INCLUD. 45, 46 |
| 45 | 606-ZZM | BALL BEARING 606VVC2 | 1 | |
| 46 | 620-2VV | BALL BEARING 6202VVCMP2L | 1 | |
| 47 | 360-957E | ARMATURE AND PINION SET 220 V-230 V | 1 | INCLUD. 48-50 |
| 48 | 630-1VV | BALL BEARING 6301VVCMP2L | 1 | |
| 49 | 302-428 | WASHER (A) | 1 | |
| 50 | 600-0VV | BALL BEARING 6000VVCMP2L | 1 | |

