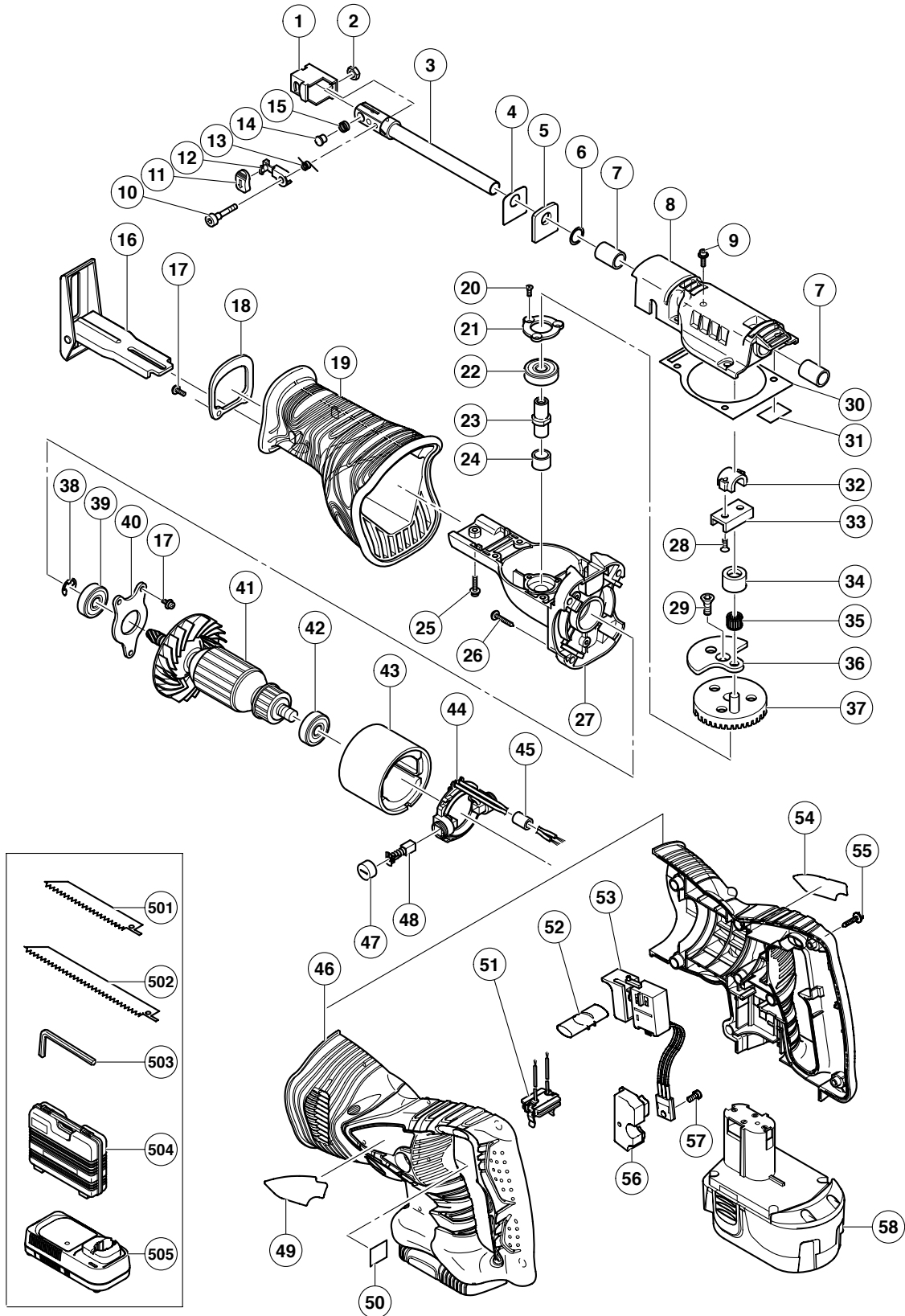


ELECTRIC TOOL PARTS LIST

■ CORDLESS RECIPROCATING SAW 2005 · 4 · 15
Model CR 18DMR (E1)



PARTS

CR 18DMR

ITEM NO.	CODE NO.	DESCRIPTION	NO. USED	REMARKS
1	321-132	BLADE HOLDER (A)	1	
2	322-709	NUT M4 (BLACK)	1	
3	324-472	PLUNGER	1	
4	996-401	PACKING WASHER	1	
5	996-400	FELT PACKING	1	
6	996-407	O-RING (1AP-12)	1	
7	956-589	METAL	2	
8	324-471	UPPER COVER	1	
9	305-574	HEX. SOCKET HD. BOLT (W/SP. WASHER) M5X16	4	
10	322-134	SPECIAL BOLT M4	1	
11	321-130	CAP	1	
12	321-131	LEVER (A)	1	
13	321-135	SPRING (D)	1	
14	321-134	HOLDER PIN (B)	1	
15	318-483	SPRING (B)	1	
16	319-866	BASE	1	
17	951-039	MACHINE SCREW (W/SP. WASHER) M4X12	5	
18	324-474	COVER PLATE	1	
19	324-473	FRONT COVER	1	
20	993-244	SEAL LOCK FLAT HD. SCREW M4X12	3	
21	319-849	BEARING COVER (B)	1	
22	690-1ZZ	BALL BEARING 6901ZZCMPS2L	1	
23	319-848	SPINDLE	1	
24	954-789	METAL (B)	1	
25	996-399	HEX. SOCKET HD. BOLT (W/FLANGE) M5X12	1	
26	986-011	TAPPING SCREW (W/SP. WASHER) D5X30	4	
27	319-844	GEAR COVER ASS'Y	1	INCLUD. 24
28	319-875	SEAL LOCK HEX. SOCKET FLAT HD. BOLT M5X12	2	
29	319-851	NYLOCK HEX. SOCKET FLAT HD. BOLT M6X16	1	
30	319-856	SEAL PACKING	1	
31	319-874	PACKING (B)	1	
32	983-567	CONNECTOR HOLDER	1	
33	996-405	CONNECTOR	1	
34	983-541	CONNECTING PIECE (A)	1	
35	324-470	NEEDLE ROLLER	1	
36	319-852	BALANCE WEIGHT	1	
37	324-469	GEAR	1	
38	670-514	RETAINING RING (E-TYPE) FOR D10 SHAFT	1	
39	600-1VV	BALL BEARING 6001VVCMP2L	1	
40	319-843	BEARING COVER (A)	1	
41	360-703	ARMATURE ASS'Y DC 18V	1	INCLUD. 38-40, 42
42	608-VVM	BALL BEARING 608VVC2PS2L	1	
43	324-468	MAGNET	1	
44	324-478	BRUSH BLOCK	1	
* 45	318-247	FERRITE CORE	1	EXCEPT FOR AUS, NZL, USA, CAN, CHN
46	324-475	HOUSING (A). (B) SET	1	
47	319-847	BRUSH CAP	2	
48	999-058	CARBON BRUSH (1 PAIR)	2	
49		HITACHI LABEL	1	
50		CAUTION LABEL	1	
51	324-517	TERMINAL PIECE	1	

STANDARD ACCESSORIES

ITEM NO.	CODE NO.	DESCRIPTION	NO. USED	REMARKS
501	318-613	SABER SAW BLADES NO. 103 150L P. 14 (5 PCS.)	1	
* 502	318-621	SABER SAW BLADES NO. 132 203L (5 PCS.)	1	FOR USA
503	944-458	HEX. BAR WRENCH 4MM	1	
504	324-313	CASE	1	
505		CHARGER (MODEL UC 24YFA)	1	

OPTIONAL ACCESSORIES

ITEM NO.	CODE NO.	DESCRIPTION	NO. USED	REMARKS
601	959-610	SABER SAW BLADES NO. 1 (5 PCS.)	1	
602	958-182	SABER SAW BLADES NO. 2 (5 PCS.)	1	
603	958-183	SABER SAW BLADES NO. 3 (5 PCS.)	1	
604	959-611	SABER SAW BLADES NO. 4 (5 PCS.)	1	
605	958-185	SABER SAW BLADES NO. 5 (5 PCS.)	1	
606	958-188	SABER SAW BLADES NO. 8 (5 PCS.)	1	
607	996-427	SABER SAW BLADES NO. 9 (3 PCS.)	1	
608	959-799	SABER SAW BLADES NO. 95 (3 PCS.)	1	
609	959-800	SABER SAW BLADES NO. 96 (3 PCS.)	1	
610	318-611	SABER SAW BLADES NO. 101 150L P. 10 (5 PCS.)	1	
611	318-612	SABER SAW BLADES NO. 102 228L P. 10 (5 PCS.)	1	
612	318-614	SABER SAW BLADES NO. 104 228L P. 14 (5 PCS.)	1	
613	318-615	SABER SAW BLADES NO. 105 150L P. 18 (5 PCS.)	1	
614	318-616	SABER SAW BLADES NO. 106 228L P. 18 (5 PCS.)	1	
615	318-617	SABER SAW BLADES NO. 107 150L P. 24 (5 PCS.)	1	
616	318-618	SABER SAW BLADES NO. 108 228L P. 24 (5 PCS.)	1	
617	318-619	SABER SAW BLADES NO. 121 305L P. 6 (5 PCS.)	1	
618	318-620	SABER SAW BLADES NO. 131 305L P. 10/14 (5PCS.)	1	
619	318-621	SABER SAW BLADES NO. 132 203L (5 PCS.)	1	