

Hitachi Power Tools

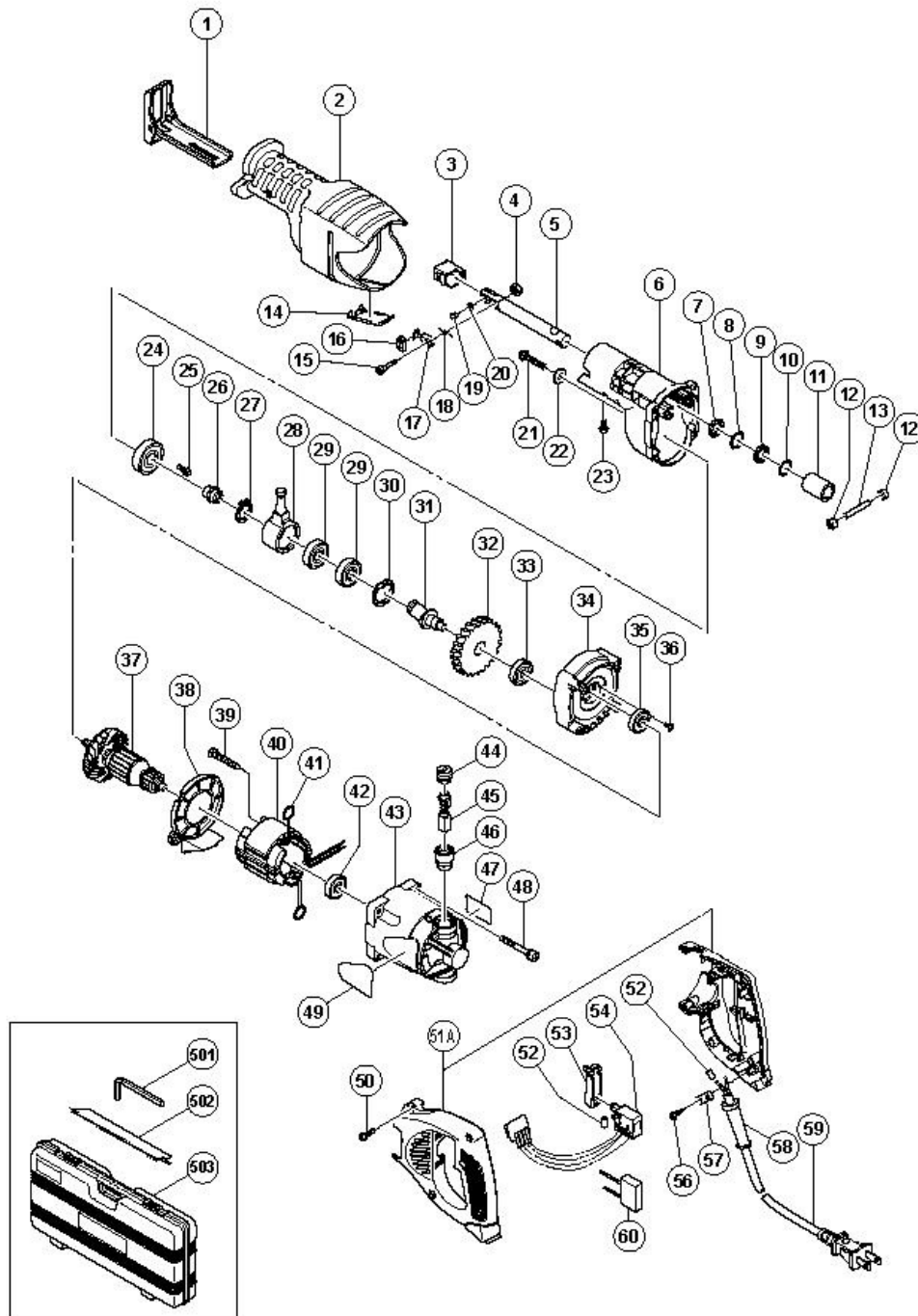
LIST NO. 0794

ELECTRIC TOOL PARTS LIST

■ RECIPROCATING SAW
Model CR 13V

2005 • 12 • 1

(E1-2)



CR13V

Pos. Nr.	Art. Nr.	Beschreibung	Stueck	Kommentar	Beschreibung
1	321-116		1		BASE (B)
2	321-125		1		FRONT COVER (C)
3	321-132		1		BLADE HOLDER (A)
4	949-554	MUTTER M4 (10ST)	1		NUT M4 (10 PCS.)
5	321-120		1		PLUNGER (B)
6	321-123		1		GEAR COVER (B)
7	318-458	FILZDICHTUNG CR13VA	1		FELT WASHER
8	321-117		1		WASHER (H)
9	318-459	V-RING CR13VA	1		V-RING
10	321-118		1		O-RING
11	321-214		1		METAL (B)
12	321-136		2		SWING ROLLER
13	318-491	STIFT D6 CR13VA	1		PIN D6
14	321-126		1		COVER CLIP
15	322-134		1		SPECIAL BOLT M4
16	321-130		1		CAP
17	321-131		1		LEVER (A)
18	321-135		1		SPRING (D)
19	321-134		1		HOLDER PIN (B)
20	318-483	FEDER (B) CR13VA/CR24DV	1		SPRING (B)
21	318-451	INBUSSCHRAUBE M6X35 M.FLANSCH	1		NYLOCK BOLT (W/FLANGE) M6X35
22	318-452	SCHEIBE (G) CR13VA	1		WASHER (G)
23	322-142		1		NYLOCK BOLT (W/FLANGE) M5X12
24	600-2DD	KUGELLAGER 6002 DD	1		BALL BEARING 6002DDCMPS2L
25	317-196		3		NYLOCK BOLT (W/FLANGE) M4X12
26	322-119		1		SUB SHAFT (B)
27	967-261	SICHERUNGSRING D17	1		RETAINING RING FOR D17 SHAFT

28	322-118		1		RECIPRO PLATE
29	600-3VV	KUGELLAGER 6003 VV	2		BALL BEARING 6003VVCMP2L
30	939-556	SICHERUNGSRING D35 (INNEN) 10ST	1		RETAINING RING FOR D35 HOLE (10 PCS.)
31	321-128		1		SECOND SHAFT (B)
32	318-473	ZAHNRAD CR13VA	1		GEAR
33	608-VVM	KUGELLAGER 608 VVM	1		BALL BEARING 608VVC2PS2L
34	321-124		1		INNER COVER (B)
35	600-1VV	KUGELLAGER 6001 VV	1		BALL BEARING 6001VVCMP2L
36	314-430	-KOPFSCHRAUBE M4X10 SELBSTS.	2		SLOTTED HD. SCREW (SEAL LOCK) M4X10
37	360-616U		1	"INCLUD.35,42"	ARMATURE ASS'Y 120V
37	360-616C		1		ARMATURE 110V-115V
37	360-616E		1		ARMATURE 220V-230V
38	321-122		1		FAN GUIDE
39	953-174	SCHNEIDSCHRAUBE D5X55	2		HEX. HD. TAPPING SCREW D5X55
40	340-563G		1	INCLUD.41	STATOR ASS'Y 120V
40	340-563H		1	INCLUD.41	STATOR ASS'Y 110V-115V
40	340-563J		1	INCLUD.41	STATOR ASS'Y 220V-230V
41	930-703	KOHLLENHALTERKLEMME DH28Y u.a.	2		BRUSH TERMINAL
42	608-VVM	KUGELLAGER 608 VVM	1		BALL BEARING 608VVC2PS2L
43	322-120		1		HOUSING
44	945-161	KOHLLENKAPPE C6U/C7U u.a.	2		BRUSH CAP
45	999-043	KOHLLENBÜRSTEN (PAAR)	2		CARBON BRUSH (1 PAIR)
46	958-900	KOHLLENHALTER F30A/C6U-C9U u.a.	2		BRUSH HOLDER
47			1		NAME PLATE

48	307-224	+KOPFSCHRAUBE M5X60 M.U-SCHEIBE	4		MACHINE SCREW (W/WASHERS) M5X60 (BLACK)
49			1		HITACHI LABEL
50	307-028	SCHNEIDSCHRAUBE D4X25 MIT FLANSCH	5		TAPPING SCREW (W/FLANGE) D4X25 (BLACK)
51A	324-823		1		HANDLE (C).(D) SET
52	981-373	ADERENDHÜLSE (D) DIV.TYPEN	4		TUBE (D)
53	322-133		1		SWITCH TRIGGER
54	322-135		1		SWITCH (1P SCREW TYPE)
54	323-520		1	"FOR GBR (230V),EUROPE"	SWITCH (1P SCREW TYPE)
54	323-521		1	FOR GBR (110V)	SWITCH (1P SCREW TYPE)
56	984-750	SCHNEIDSCHRAUBE D4X16 MIT FLANSCH	2		TAPPING SCREW (W/FLANGE) D4X16
57	937-631	KABELKLEMME DIV.TYPEN	1		CORD CLIP
58	953-327	KABELKNICKSCHUTZ D8.8 DIV.TYPEN	1		CORD ARMOR D8.8
59	500-434Z		1	(CORD ARMOR D8.8)	CORD
59	500-234Z	ANSCHLUSSKABEL MIT STECKER	1	(CORD ARMOR D8.8) FOR EUROPE	CORD
59	500-435Z		1	(CORD ARMOR D8.8) FOR GBR (230V)	CORD
59	500-461Z		1	(CORD ARMOR D8.8) FOR GBR (110V)	CORD
60	930-039	KONDENSATOR C6U-C13U u.a.	1	"FOR GBR,EUROPE"	NOISE SUPPRESSOR
501	944-458	INBUSSCHLÜSSEL D4(M5)	1		HEX. BAR WRENCH 4MM
502	318-621		1		SABER SAW BLADES NO.132 203L (5 PCS.)
503	321-142		1		CASE

601	959-610		1	SABER SAW BLADES NO.1 (5 PCS.)
602	958-182		1	SABER SAW BLADES NO.2 (5 PCS.)
603	958-183		1	SABER SAW BLADES NO.3 (5 PCS.)
604	959-611		1	SABER SAW BLADES NO.4 (5 PCS.)
605	958-185		1	SABER SAW BLADES NO.5 (5 PCS.)
606	958-188		1	SABER SAW BLADES NO.8 (5 PCS.)
607	996-427		1	SABER SAW BLADES NO.9 (3 PCS.)
608	318-611		1	SABER SAW BLADES NO.101 150L P.10 (5 PCS
609	318-612		1	SABER SAW BLADES NO.102 228L P.10 (5 PCS
610	318-613		1	SABER SAW BLADES NO.103 150L P.14 (5 PCS
611	318-614		1	SABER SAW BLADES NO.104 228L P.14 (5 PCS
612	324-818		1	SABER SAW BLADES NO.109 150L P.18 (5 PCS
613	324-819		1	SABER SAW BLADES NO.110 228L P.18 (5 PCS
614	318-617		1	SABER SAW BLADES NO.107 150L P.24 (5 PCS
615	318-618		1	SABER SAW BLADES NO.108 228L P.24 (5 PCS
616	318-619		1	SABER SAW BLADES NO.121 305L P.6 (5 PCS.
				SABER SAW

617	318-620		1		BLADES NO.131 305L P.10/14(5PC
618	321-113		1	INCLUD.619-631	CUT-OFF GUIDE ASS'Y (L)
619	996-423	HEBEL CR10V/CR12V	1		NUT LEVER
620	996-422		1		CHAIN BOLT
621	996-421		2		GUIDE BAR
622	996-424		1		SLIDE PLATE
623	949-755	INBUSSCHRAUBE M6X16 (10ST)	2		HEX. SOCKET HD. BOLT M6X16 (10 PCS.)
624	321-116		1		BASE (B)
625	321-427		1		PLATE (B)
626	321-428		2		BASE SLEEVE
627	949-665	INBUSSCHRAUBE M5X14 (10ST)	2		HEX. SOCKET HD. BOLT M5X14 (10 PCS.)
628	949-755	INBUSSCHRAUBE M6X16 (10ST)	2		HEX. SOCKET HD. BOLT M6X16 (10 PCS.)
629	949-425	UNTERLEGSCHIEBE M6 (10ST)	2		WASHER M6 (10 PCS.)
630	944-458	INBUSSCHLÜSSEL D4(M5)	1		HEX. BAR WRENCH 4MM
631	944-459	INBUSSCHLÜSSEL D5(M6)	1		HEX. BAR WRENCH 5MM