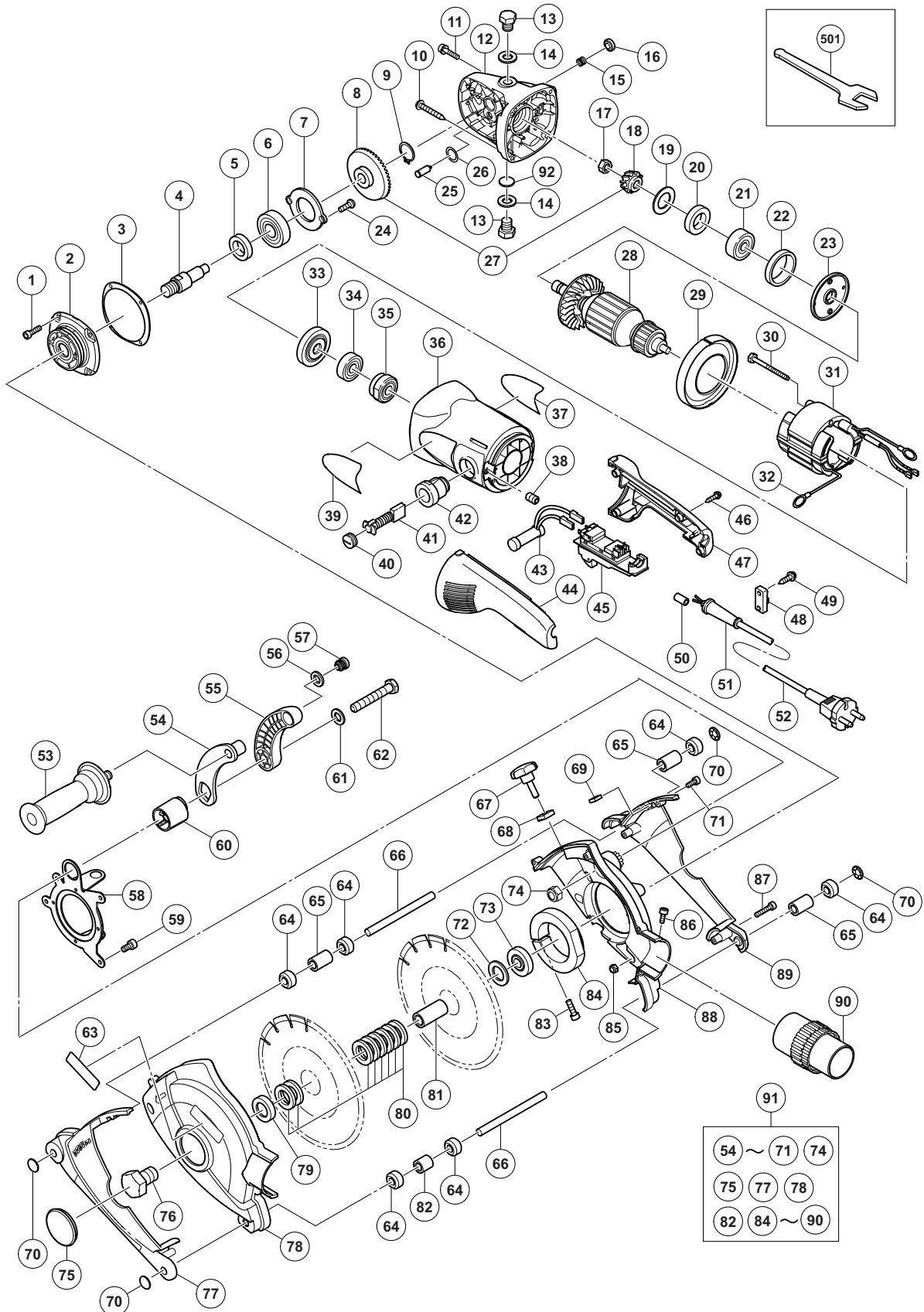


ELECTRIC TOOL PARTS LIST

WALL CHASER
Model CM 7MRU

2009·6·22
(E1)



PARTS

CM 7MRU

ITEM NO.	CODE NO.	DESCRIPTION	NO. USED	REMARKS
1	994-192	HEX. SOCKET HD. BOLT (W/FLANGE) M5 X 16	4	
2	320-227	PACKING GLAND	1	
3	320-228	SEAL PLATE	1	
4	320-234	SPINDLE	1	
5	990-852	FELT PACKING (B)	1	
6	630-2VV	BALL BEARING 6302VVCMP2L	1	
7	320-229	BEARING COVER (B)	1	
8		GEAR	1	
9	939-542	RETAINING RING FOR D12 SHAFT (10 PCS.)	1	
10	323-209	TAPPING SCREW (W/FLANGE) D5 X 35 (BLACK)	4	
11	984-509	SEAL LOCK HEX. SOCKET HD. BOLT M5 X 14	2	
12	320-217	GEAR COVER ASS'Y	1	INCLUD. 15, 16, 25, 26, 92
13	331-050	BOLT M14	2	
14	331-045	NYLON WASHER D14	2	
15	320-219	SPRING	1	
16	306-888	PUSHING BUTTON	1	
17	320-226	SPECIAL NUT M10	1	
18		PINION	1	
19	320-221	SEAL WASHER	1	
20	320-222	FELT PACKING	1	
21	630-1VV	BALL BEARING 6301VVCMP2L	1	
22	994-208	RUBBER RING (B)	1	
23	320-220	BEARING COVER (A)	1	
24	949-236	MACHINE SCREW M5 X 10 (10 PCS.)	2	
25	306-890	LOCK PIN	1	
26	320-218	O-RING	1	
27	330-032	GEAR AND PINION SET	1	INCLUD. 8, 18
28	360-762E	ARMATURE 220V-240V	1	
29	320-215	FAN GUIDE	1	
30	961-501	HEX. HD. TAPPING SCREW D5 X 60	2	
31	340-664E	STATOR ASS'Y 220V-230V	1	INCLUD. 32
32	958-032	BRUSH TERMINAL	2	
33	320-216	DUST SEAL	1	
34	600-0VV	BALL BEARING 6000VVCMP2L	1	
35	321-536	BEARING BUSHING	1	
36	325-640	HOUSING ASS'Y	1	INCLUD. 42
37		NAME PLATE	1	
38	938-477	HEX. SOCKET SET SCREW M5 X 8	2	
39		HITACHI LABEL (A)	1	
40	940-540	BRUSH CAP	2	
* 41	999-044	CARBON BRUSH (1 PAIR)	1	
* 41	999-074	CARBON BRUSH (AUTO STOP TYPE) (1 PAIR)	1	
42	980-487	BRUSH HOLDER	2	
43	320-236	RESISTOR	1	
44	325-641	HANDLE (B)	1	
* 45	320-235	SWITCH (2P PILLAR TYPE) W/SAFETY LOCK	1	
* 45	320-371	SWITCH (2P PILLAR TYPE) W/SAFETY LOCK	1	FOR HOL
46	325-642	HANDLE (A)	1	
47	305-812	TAPPING SCREW (W/FLANGE) D4 X 16 (BLACK)	4	
48	960-266	CORD CLIP	1	

PARTS

CM 7MRU

ITEM NO.	CODE NO.	DESCRIPTION	NO. USED	REMARKS
49	984-750	TAPPING SCREW (W/FLANGE) D4 X 16	2	
50	981-373	TUBE (D)	2	FOR CORD
51	940-778	CORD ARMOR D10.7	1	
52	500-247Z	CORD	1	(CORD ARMOR D10.7)
53	937-981	SIDE HANDLE FOR M14	1	
54	331-027	HANDLE ARM (B)	1	
55	331-058	HANDLE ARM (A)	1	
56	331-053	NYLON WASHER D12	1	
57	331-037	HANDLE PLUG	1	
58	331-026	GEAR BOX BRACKET	1	
59	331-048	HEX. SOCKET HD. BOLT M5 X 12	4	
60	331-059	HANDLE RATCHET	1	
61	331-043	BOLT WASHER D12	1	
62	331-044	BOLT M12	1	
63		HITACHI LABEL	1	
64	331-028	ROLLER	6	
65	331-031	ROLLER SPACER (30)	3	
66	331-029	ROLLER SHAFT	2	
67	331-052	KNOB BOLT	1	
68	331-062	LOCK WASHER	1	
69	331-040	SQUARE NUT M8	1	
70	331-041	SHAFT CAP	4	
71	331-046	HEX. SOCKET HD. BOLT M4 X 12	1	
72	331-032	BLADE SPACER (3)	1	
73	937-907Z	WHEEL WASHER (A)	1	
74	331-042	NYLOCK NUT M12	1	
75	331-038	RUBBER GROMMET	1	
76	331-050	BOLT M14	1	
77	331-056	DUST GUARD (A)	1	
78	331-054	DUST COVER (A)	1	
79	331-034	BLADE WASHER	1	
80	331-033	BLADE SPACER (5)	8	
81	331-035	DRIVE SHAFT	1	
82	331-030	ROLLER SPACER(20)	1	
83	331-049	HEX. SOCKET HD. BOLT M6 X 25	1	
84	331-060	GEAR BOX CLAMP	1	
85	331-051	NYLOCK NUT M5	4	
86	331-048	HEX. SOCKET HD. BOLT M5 X 12	1	
87	331-047	HEX. SOCKET HD. BOLT M4 X 20	6	
88	331-055	DUST COVER (B)	1	
89	331-057	DUST GUARD (B)	1	
90	331-061	VACUUM COUPLING	1	
91	331-025	DUST COVER ASS'Y	1	INCLUD. 54-71, 74, 75, 77, 78, 82, 84-90
92	937-033	FELT WASHER	1	

