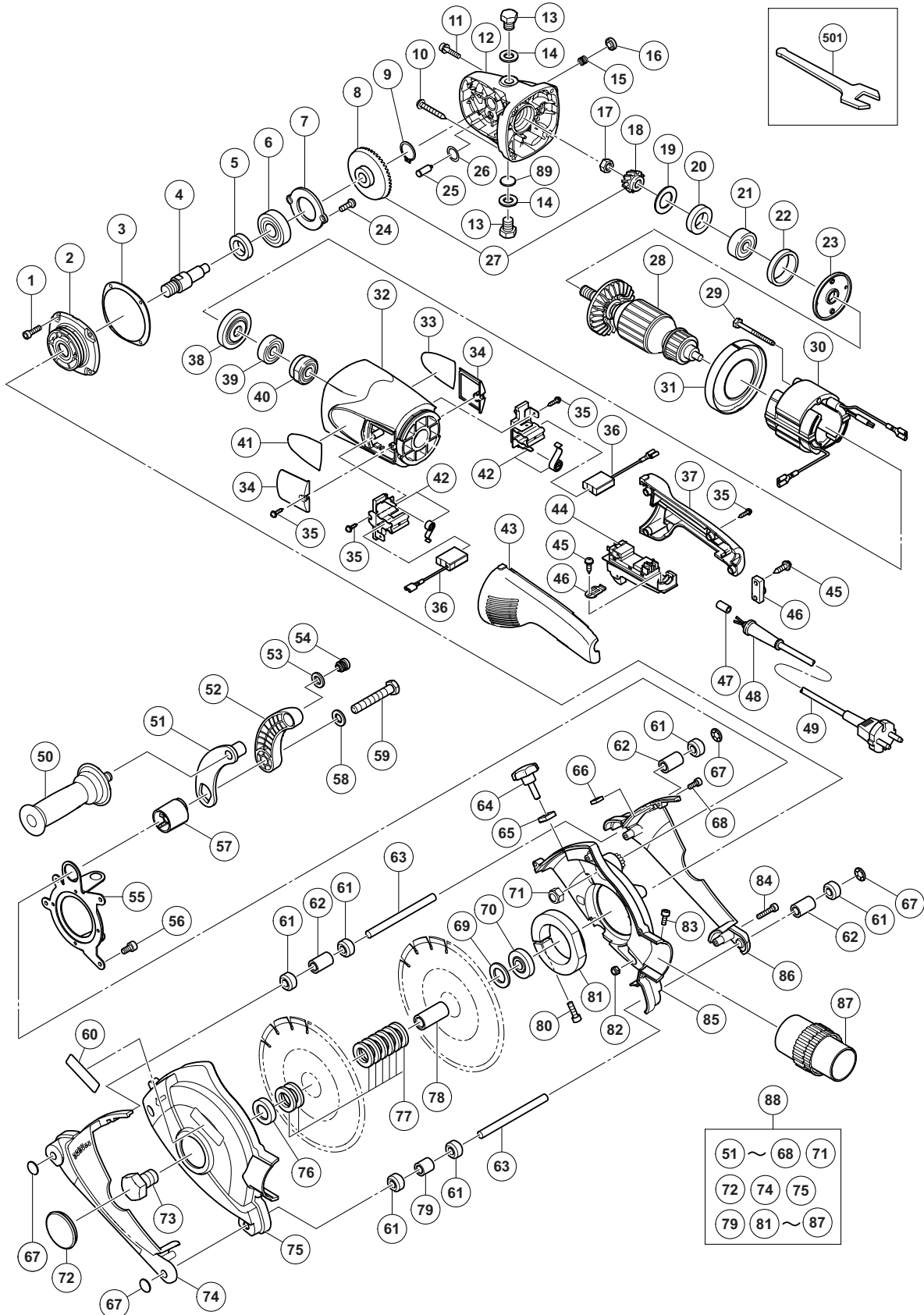


ELECTRIC TOOL PARTS LIST

WALL CHASER Model CM 7MC

2009·8·5
(E1)



PARTS

CM 7MC

ITEM NO.	CODE NO.	DESCRIPTION	NO. USED	REMARKS
1	994-192	HEX. SOCKET HD. BOLT (W/FLANGE) M5 X 16	4	
2	320-227	PACKING GLAND	1	
3	320-228	SEAL PLATE	1	
4	320-234	SPINDLE	1	
5	990-852	FELT PACKING (B)	1	
6	630-2DD	BALL BEARING 6302DDCMPS2L	1	
7	320-229	BEARING COVER (B)	1	
8		GEAR	1	
9	939-542	RETAINING RING FOR D12 SHAFT (10 PCS.)	1	
10	323-209	TAPPING SCREW (W/FLANGE) D5 X 35 (BLACK)	4	
11	984-509	SEAL LOCK HEX. SOCKET HD. BOLT M5 X 14	2	
12	320-217	GEAR COVER ASS'Y	1	INCLUD. 15, 16, 25, 26 ,89
13	331-050	BOLT M14	2	
14	331-045	NYLON WASHER D14	2	
15	320-219	SPRING	1	
16	306-888	PUSHING BUTTON	1	
17	320-226	SPECIAL NUT M10	1	
18		PINION	1	
19	320-221	SEAL WASHER	1	
20	320-222	FELT PACKING	1	
21	630-1DD	BALL BEARING 6301DDCMPS2L	1	
22	994-208	RUBBER RING (B)	1	
23	320-220	BEARING COVER (A)	1	
24	949-236	MACHINE SCREW M5 X 10 (10 PCS.)	2	
25	306-890	LOCK PIN	1	
26	320-218	O-RING	1	
27	330-032	GEAR AND PINION SET	1	INCLUD. 8, 18
* 28	360-594U	ARMATURE ASS'Y 110V-120V	1	INCLUD. 20, 21, 38, 39
* 28	360-594E	ARMATURE 220V-230V	1	
29	984-271	HEX. HD. TAPPING SCREW D5 X 75	2	
* 30	340-546C	STATOR 110V-120V	1	
* 30	340-546E	STATOR 220V-230V	1	
31	320-215	FAN GUIDE	1	
32	321-535	HOUSING ASS'Y	1	INCLUD. 40
33		NAME PLATE	1	
34	320-232	BRUSH COVER	2	
35	305-812	TAPPING SCREW (W/FLANGE) D4 X 16 (BLACK)	6	
* 36	999-089	CARBON BRUSH (AUTO STOP TYPE) (1 PAIR)	1	
* 36	999-061	CARBON BRUSH 7 X 17 X 22.5 (1 PAIR)	1	
* 36	999-061	CARBON BRUSH 7 X 17 X 22.5 (1 PAIR)	2	FOR GBR
37	320-230	HANDLE (A)	1	
38	320-216	DUST SEAL	1	
39	600-0VV	BALL BEARING 6000VVCMP2L	1	
40	321-536	BEARING BUSHING	1	
41		HITACHI LABEL (A)	1	
42	322-323	BRUSH HOLDER SET	2	
43	320-231	HANDLE (B)	1	
44	320-238	SWITCH (2P PILLAR TYPE) W/SAFETY LOCK	1	
* 45	984-750	TAPPING SCREW (W/FLANGE) D4 X 16	2	
* 45	984-750	TAPPING SCREW (W/FLANGE) D4 X 16	1	FOR GBR (110V)

PARTS

CM 7MC

ITEM NO.	CODE NO.	DESCRIPTION	NO. USED	REMARKS
* 46	960-266	CORD CLIP	1	
* 46	331-336	CORD CLIP	1	FOR GBR (110V)
47	981-373	TUBE (D)	2	FOR CORD
* 48	940-778	CORD ARMOR D10.7	1	
* 48	331-335	CORD ARMOR D11.2	1	
* 49	321-537	CORD	1	(CORD ARMOR D10.7)
* 49	500-483Z	CORD	1	(CORD ARMOR D10.7) FOR GBR (110V)
* 49	500-465Z	CORD	1	(CORD ARMOR D11.2) FOR GBR (230V)
50	322-411	SIDE HANDLE	1	
51	331-027	HANDLE ARM (B)	1	
52	331-058	HANDLE ARM (A)	1	
53	331-053	NYLON WASHER D12	1	
54	331-037	HANDLE PLUG	1	
55	331-026	GEAR BOX BRACKET	1	
56	331-048	HEX. SOCKET HD. BOLT M5 X 12	4	
57	331-059	HANDLE RATCHET	1	
58	331-043	BOLT WASHER D12	1	
59	331-044	BOLT M12	1	
60		HITACHI LABEL	1	
61	331-028	ROLLER	6	
62	331-031	ROLLER SPACER (30)	3	
63	331-029	ROLLER SHAFT	2	
64	331-052	KNOB BOLT	1	
65	331-062	LOCK WASHER	1	
66	331-040	SQUARE NUT M8	1	
67	331-041	SHAFT CAP	4	
68	331-046	HEX. SOCKET HD. BOLT M4 X 12	1	
69	331-032	BLADE SPACER (3)	1	
70	937-907Z	WHEEL WASHER (A)	1	
71	331-042	NYLOCK NUT M12	1	
72	331-038	RUBBER GROMMET	1	
73	331-050	BOLT M14	1	
74	331-056	DUST GUARD (A)	1	
75	331-054	DUST COVER (A)	1	
76	331-034	BLADE WASHER	1	
77	331-033	BLADE SPACER (5)	8	
78	331-035	DRIVE SHAFT	1	
79	331-030	ROLLER SPACER(20)	1	
80	331-049	HEX. SOCKET HD. BOLT M6 X 25	1	
81	331-060	GEAR BOX CLAMP	1	
82	331-051	NYLOCK NUT M5	4	
83	331-048	HEX. SOCKET HD. BOLT M5 X 12	1	
84	331-047	HEX. SOCKET HD. BOLT M4 X 20	6	
85	331-055	DUST COVER (B)	1	
86	331-057	DUST GUARD (B)	1	
87	331-061	VACUUM COUPLING	1	
88	331-025	DUST COVER ASS'Y	1	INCLUD. 51-68, 71, 72, 74, 75, 79, 81-87
89	937-033	FELT WASHER	1	

