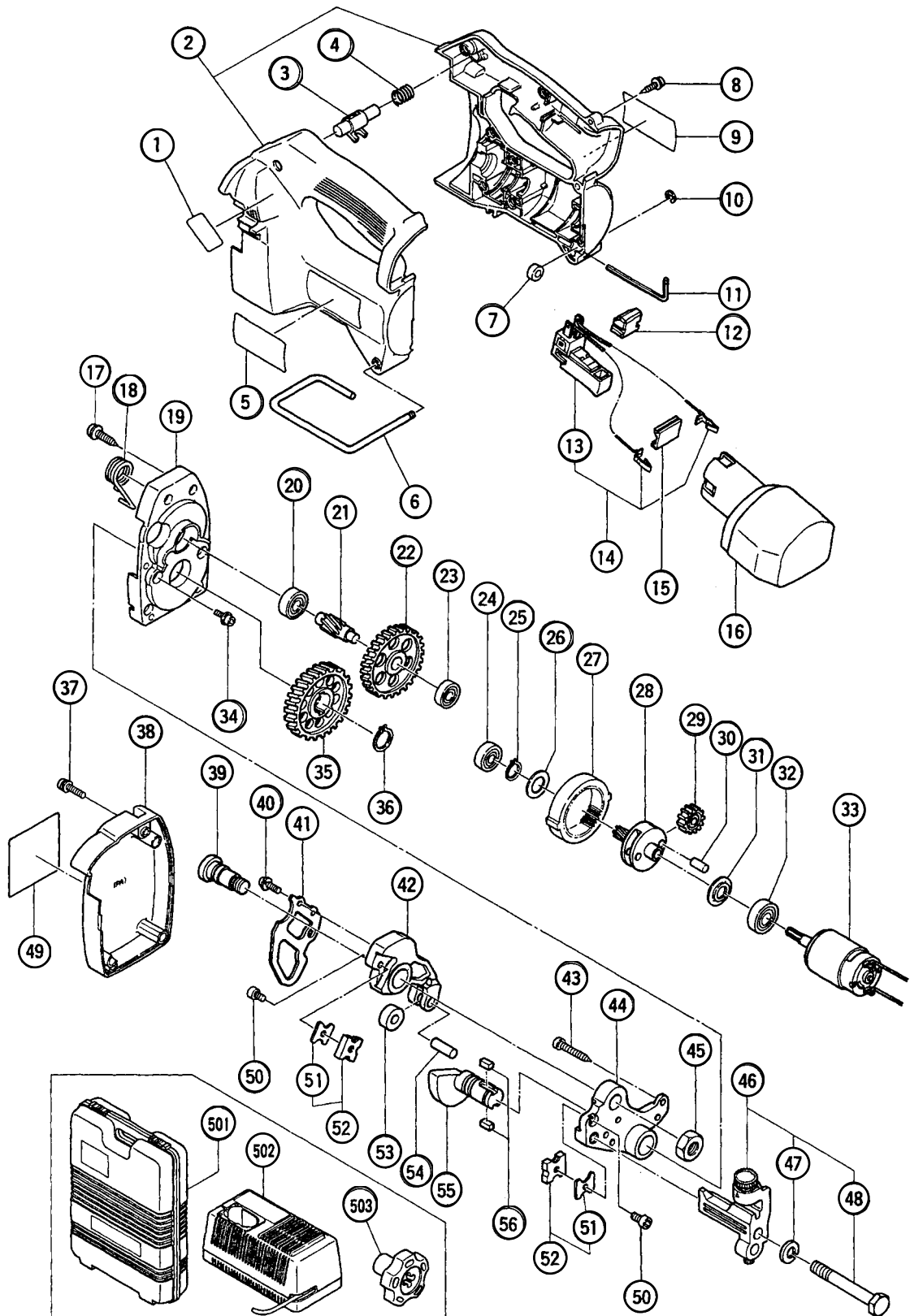


## ELECTRIC TOOL PARTS LIST

■ CORDLESS STUD CUTTER  
Model CL 10D2

2001 · 1 · 25  
(E1)



## PARTS

CL 10D2

ITEM NO.	CODE NO.	DESCRIPTION	NO. USED	REMARKS
1		CAUTION PLATE (C)	1	
2	319-416	HOUSING (A).(B) SET	1	
3	307-604	PUSHING BUTTON	1	
4	319-773	SPRING	1	
5		HITACHI LABEL	1	
6	319-401	HOOK	1	
7	307-607	WRENCH HOLDER	1	
8	301-653	TAPPING SCREW (W/FLANGE) D4X20 (BLACK)	9	
9		NAME PLATE	1	
10	968-643	RETAINING RING (E-TYPE) FOR D4 SHAFT	1	
11	944-458	HEX. BAR WRENCH 4MM	1	
12	319-839	SWITCH HOLDER	1	
13	303-988	SWITCH (IP SOLDER TYPE) W/O LOCK	1	
14	319-414	SWITCH ASS'Y	1	INCLUD.13
15	991-666	TERMINAL SUPPORT	1	
* 16	318-370	BATTERY EB 1230H (W/ENGLISH N.P.)	1	
* 16	310-378	BATTERY EB 12B (W/ENGLISH N.P.)	1	
17	305-558	TAPPING SCREW (W/FLANGE) D5X25 (BLACK)	4	
18	307-624	RETURN SPRING	1	
19	307-622	GEAR COVER	1	
20	629-VVM	BALL BEARING 629VVC2PS2L	1	
21	319-407	THIRD PINION	1	
22	319-406	SECOND GEAR	1	
23	608-VVM	BALL BEARING 608VVC2PS2L	1	
24	609-VVM	BALL BEARING 609VVC2PS2L	1	
25	939-544	RETAINING RING FOR D15 SHAFT (10 PCS.)	1	
26	302-714	WASHER	1	
27	310-254	RING GEAR	1	
28	319-405	SECOND PINION	1	
29	319-404	IDLE GEAR	2	
30	307-609	NEEDLE	2	
31	307-608	WASHER	1	
32	600-1VV	BALL BEARING 6001VVCMP2S2L	1	
33	319-413	MOTOR	1	
34	998-471	HEX. SOCKET HD. BOLT M5X12	3	
35	319-393	FINAL GEAR	1	
36	939-546	RETAINING RING FOR D18 SHAFT (10 PCS.)	1	
37	307-606	MACHINE SCREW (W/WASHERS) M4X20 (BLACK)	2	
38	319-838	COVER	1	
39	319-396	BOLT (A)	1	
40	987-203	SEAL LOCK SCREW (W/SP. WASHER) M4X12	2	
41	319-398	RETURN PLATE	1	
42	319-397	BRACKET (A)	1	
43	931-875	TAPPING SCREW D5X35	2	
44	319-395	BRACKET (B)	1	
45	949-574	LOCK NUT M12 (10 PCS.)	1	
46	309-180	STUD GUIDE ASS'Y	1	INCLUD.47,48
47	949-458	SPRING WASHER M10 (10 PCS.)	1	
48	309-621	BOLT W3/8X75	1	
49		CAUTION PLATE (F)	1	
50	998-486	SPECIAL BOLT M5X9	2	

\* ALTERNATIVE PARTS

1 - 01



