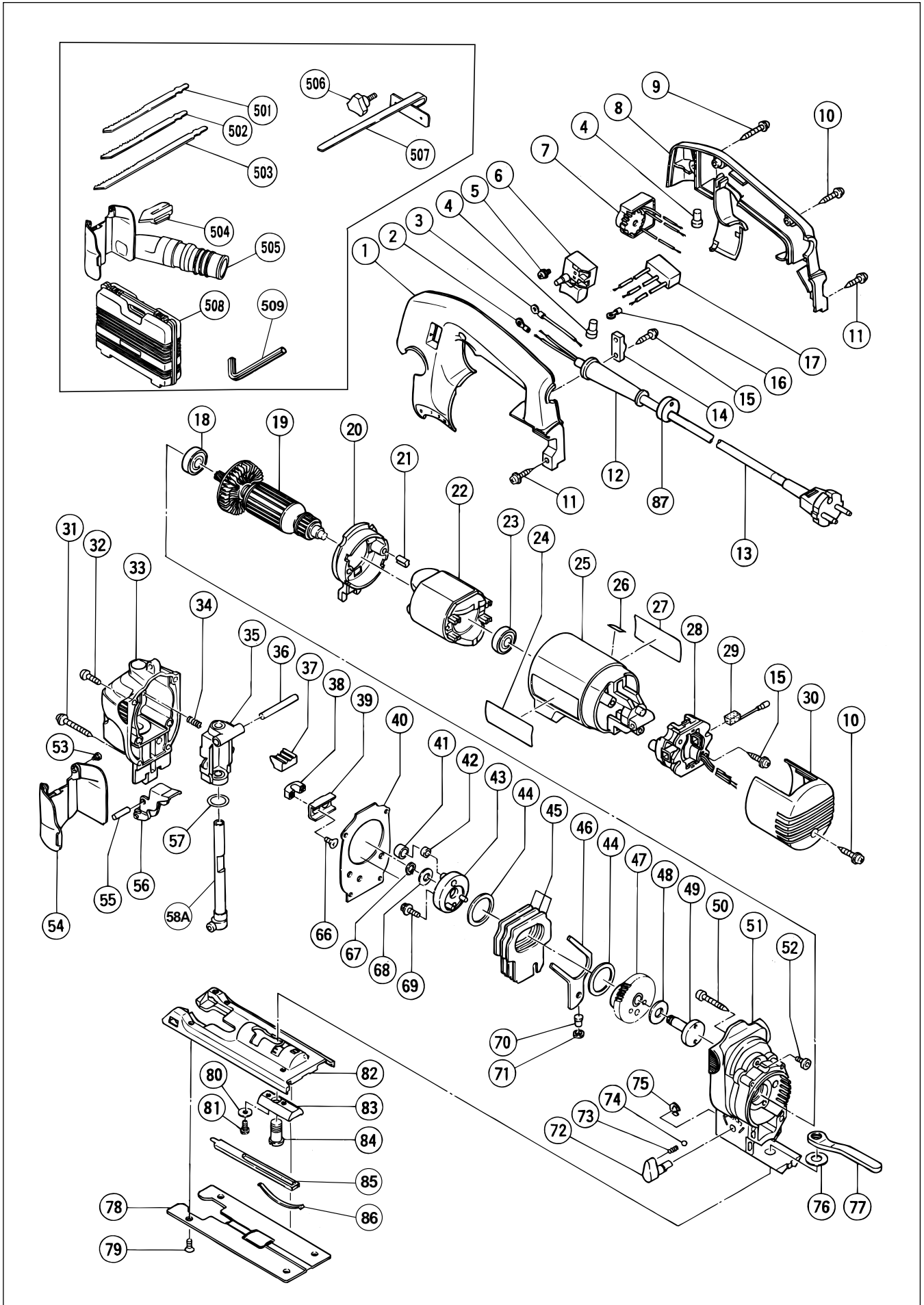


Assembly Diagram for CJ 110V



PARTS

CJ 110V

ITEM NO.	CODE NO.	DESCRIPTION	NO. USED	REMARKS	
1	305-800	HANDLE (A)	1		
2	980-063	TERMINAL	2	FOR CORD	
3	305-783	INTERNAL WIRE	1		
4	959-140	CONNECTOR 50091 (10 PCS.)	3		
5	305-499	MACHINE SCREW (W/WASHER) M3.5X6	4		
6	305-791	SWITCH (C) (2P SCREW TYPE) W/LOCK	1		
*	7	305-789	CONTROLLER CIRCUIT 220V-240V	1	
*	7	305-790	CONTROLLER CIRCUIT 110V-115V	1	
8	305-801	HANDLE (B)	1		
9	307-028	TAPPING SCREW (W/FLANGE) D4X25 (BLACK)	1		
10	301-653	TAPPING SCREW (W/FLANGE) D4X20 (BLACK)	3		
11	930-446	TAPPING SCREW (W/WASHER) D4X16	2		
12	953-327	CORD ARMOR D8.8	1		
*	13	500-234Z	CORD	1	(CORD AROMR D8.8)
*	13	500-439Z	CORD	1	(CORD ARMOR D8.8) FOR NZL
*	13	500-436Z	CORD	1	(CORD ARMOR D8.8) FOR GBR
*	13	500-395Z	CORD	1	(CORD ARMOR D8.8) FOR SUI
*	13	500-432Z	CORD	1	(CORD ARMOR D8.8) FOR USA
*	13	500-231Z	CORD	1	(CORD ARMOR D8.8) FOR GBR (110V)
14	960-266	CORD CLIP	1		
15	305-812	TAPPING SCREW (W/FLANGE) D4X16 (BLACK)	4		
16	980-063	TERMINAL	2	FOR NOISE SUPPRESSOR	
17	994-273	NOISE SUPPRESSOR	1		
18	608-DDW	BALL BEARING 608DDW	1		
*	19	360-277C	ARMATURE 110V-115V	1	
*	19	360-277E	ARMATURE 220V-230V	1	
20	305-782	FAN GUIDE ASS'Y	1	INCLUD.21	
21	994-343	RUBBER BUSHING	2		
*	22	340-249C	STATOR 110V-115V	1	
*	22	340-249E	STATOR 220V-230V	1	
23	608-DDM	BALL BEARING 608DDC2PS2L	1		
24		HITACHI LABEL	1		
25	305-784	HOUSING	1		
26		LABEL (CE MARK) (A)	1		
27		NAME PLATE	1		
*	28	305-785	WIRING BLOCK (C)	1	
*	28	305-786	WIRING BLOCK (C)	1	FOR USA
29	999-075	CARBON BRUSH (AUTO STOP TYPE) (1 PAIR)	2		
30	305-799	TAIL COVER	1		
31	305-736	TAPPING SCREW (W/FLANGE) D4X65	2		
32	949-219	MACHINE SCREW M4X16 (10 PCS.)	2		
33	316-109	UPPER COVER	1		
34	305-752	SPRING	2		
35	316-110	PLUNGER HOLDER ASS'Y	1	INCLUD.57	
36	961-181	PIN D6X47	1		
37	305-751	RUBBER CUSHION	1		
38	316-112	CONNECTOR HOLDER	1		
39	316-111	CONNECTOR	1		
40	305-743	PACKING	1		
41	940-916	CONNECTING PIECE	1		
42	940-917	NEEDLE BEARING NTN K6X9X8T2	1		

