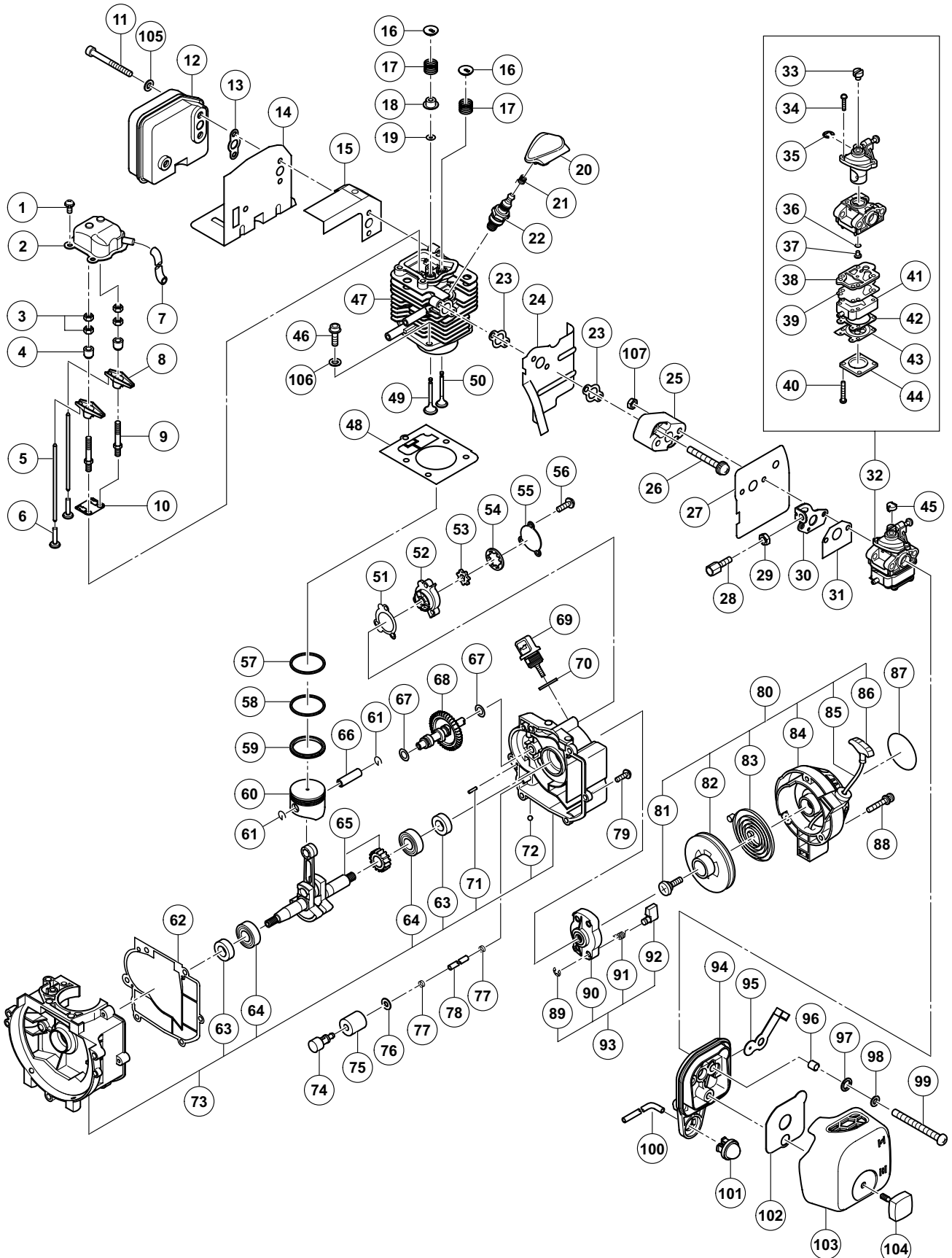


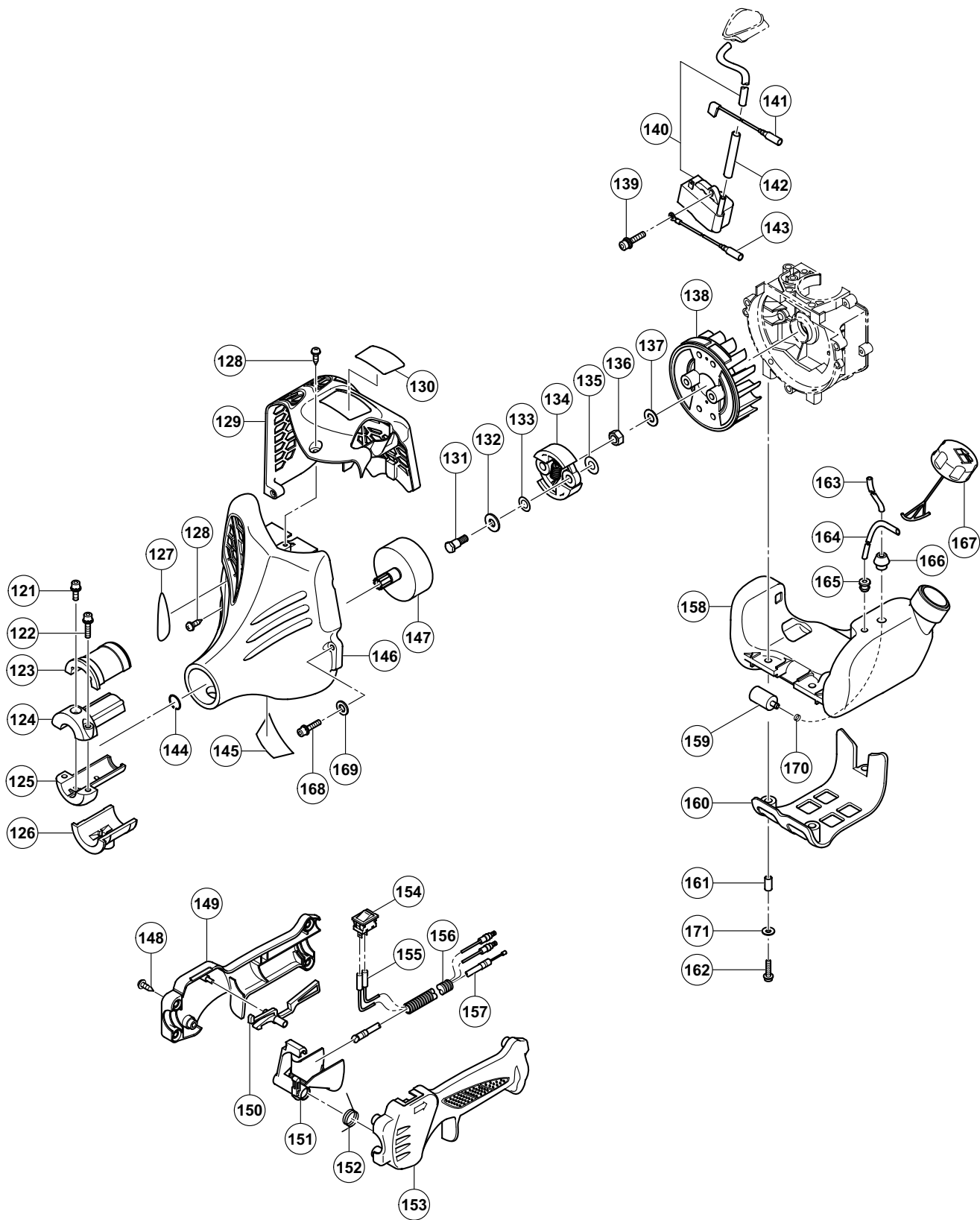
ENGINE TOOL PARTS LIST

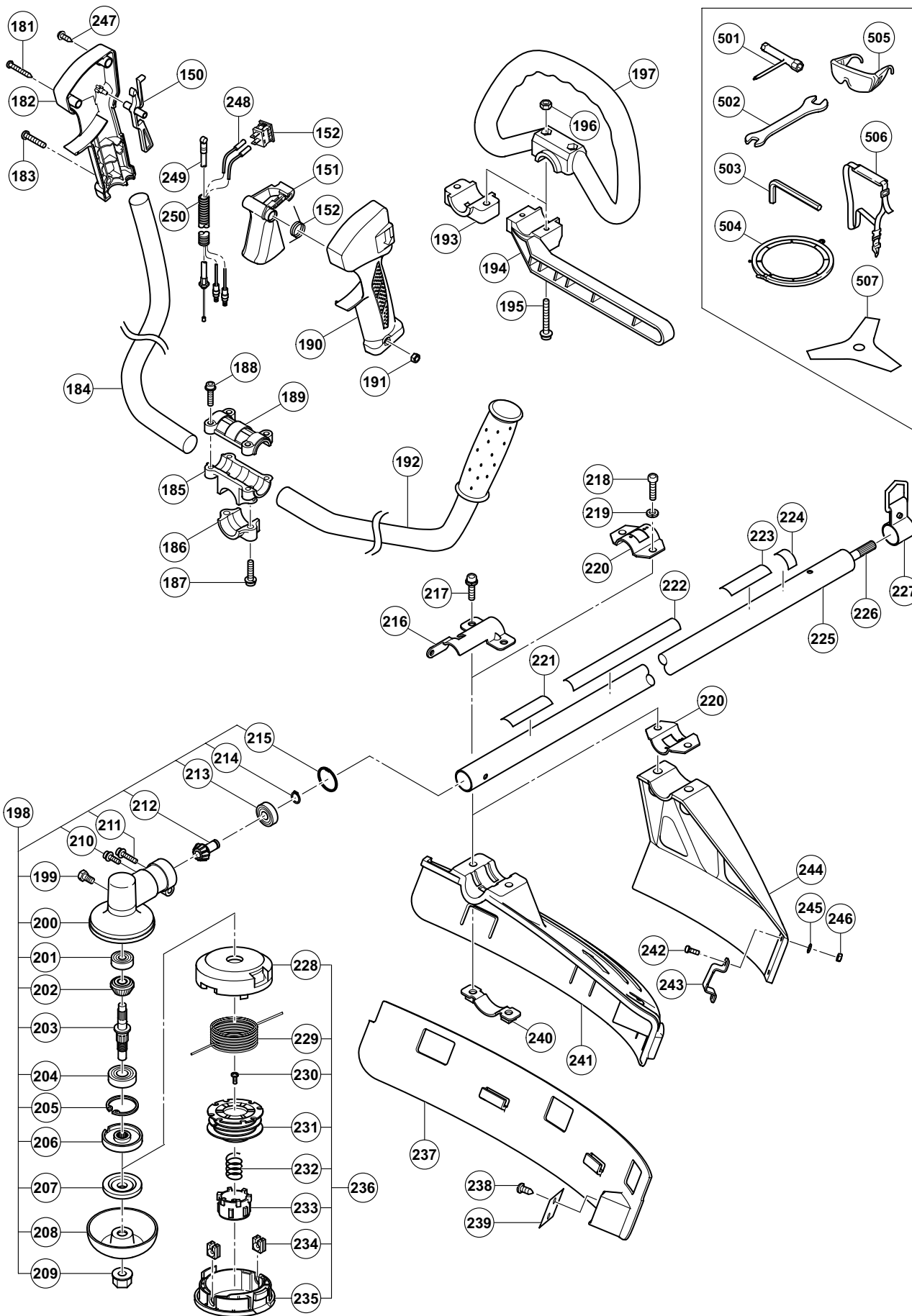
ENGINE GRASS TRIMMER Model CG 25EUS

2010·4·9

(E1)







PARTS

CG 25EUS

ITEM NO.	CODE NO.	DESCRIPTION	NO. USED	REMARKS
1	307-635	MACHINE SCREW (W/SP. WASHER) M4 X 10	3	
2	669-6440	CYLINDER HEAD COVER	1	
3	949-566	LOCK NUT M5 (10 PCS.)	4	
4	669-6438	PIVOT ROCKER ARM	2	
5	669-6437	PUSH ROD	2	
6	669-6432	TAPPET	2	
7	669-6442	BREATHER PIPE	1	
8	669-6439	ROCKER ARM	2	
9	669-6415	SHAFT BOLT	2	
10	669-6414	PUSH ROD GUIDE	1	
11	668-5409	HEX. SOCKET HD. BOLT M5	3	
* 12	669-6462	MUFFLER	1	
* 12	669-6952	MUFFLER	1	FOR USA (L), CAN (L), AUS (L), NZL (L)
13	669-6460	MUFFLER GASKET (A)	1	
14	669-6461	WIND GUIDE PLATE (B)	1	
15	669-6953	MUFFLER COVER (A)	1	
16	669-6421	RETAINER VALVE	2	
17	669-6420	VALVE SPRING	2	
18	669-6418	STEM SEAL BASE	1	
19	669-6419	STEM SEAL	1	
20	669-6465	SPARK PLUG CAP	1	
21	669-6996	METAL FITTING OF PLUG CAP	1	
22	669-6473	SPARK PLUG (NGK CMR5H)	1	
23	669-6450	INSULATOR GASKET	2	
24	669-6451	WIND GUIDE PLATE (A)	1	
25	669-6452	INSULATOR	1	
26	880-561	MACHINE SCREW (W/WASHERS) M5 X 30	2	
27	669-6954	CARBURETOR GASKET	1	
* 28	669-6955	CABLE ADJUSTER	1	FOR USA (L), CAN (L)
* 29	668-4872	LOCK NUT M6	1	FOR USA (L), CAN (L)
30	668-4629	THROTTLE WIRE FIXING PLATE	1	
31	669-6956	INSULATOR GASKET (B)	1	
32	669-6957	CARBURETOR	1	INCLUD. 33-44
33		PLUG CAP	1	
34		SCREW	2	
35		RING-SPRING RETAINING	1	
36		O-RING	1	
37		JET	1	
38		GASKET-PUMP	1	
39		DIAPHRAGM-PUMP	1	
40		SCREW	4	TO COVER-METERING DIAPHRAGM
41		BODY ASSEMBLY-PUMP	1	
42		GASKET-METERING DIAPHRAGM	1	
43		DIAPHRAGM ASSEMBLY- METERING	1	
44		COVER-METERING DIAPHRAGM	1	
45	668-4628	SWIVEL CAP	1	
46	669-6958	HEX. SOCKET BOLT M5	5	
47	669-6413	CYLINDER (A)	1	
48	669-6436	CYLINDER GASKET	1	
49	669-6417	INTAKE VALVE	1	

PARTS

CG 25EUS

ITEM NO.	CODE NO.		NO. USED	
50	669-6416	EXHAUST VALVE	1	
51	669-6444	PUMP GASKET	1	
52	669-6443	BASE PUMP	1	
53	669-6445	INNER ROTOR	1	
54	669-6446	OUTER ROTOR	1	
55	669-6447	COVER PUMP	1	
56	696-997	MACHINE SCREW (W/SP. WASHER) M5 X 16(BLACK)	3	
57	669-6429	1ST RING	1	
58	669-6430	2ND RING	1	
59	669-6431	OIL RING	1	
60	669-6427	PISTON	1	
61	668-4590	PISTON PIN CIRCLIP	2	
62	669-6425	CRANK CASE GASKET	1	
63	668-4607	OIL SEAL TB 12227	2	
64	668-4608	BALL BEARING 6001 C3	2	
65	669-6426	CRANK SHAFT GEAR SET	1	
66	668-4591	PISTON PIN	1	
67	669-6434	CHIM	2	
68	669-6433	CAM SHAFT SET	1	
69	669-6449	OIL CAP	1	
70	669-6959	O-RING (I.D 13.8)	1	
71	668-5391	NEEDLE ROLLER D3	2	
72	321-905	STEEL BALL D4 (10 PCS.)	1	
73	669-6960	CRANK CASE ASS'Y (B)	1	INCLUD. 63, 64, 71, 72
74	668-5310	OIL FILTER BODY	1	
75	669-0919	OIL FILTER	1	
76	668-5407	BOLT WASHER D5	1	
77	668-5311	CLIP	2	
78	669-6435	FUEL PIPE	1	
79	668-4599	HEX. HOLE BOLT M4 X 18/WS	6	
80	669-6470	RECOIL STARTER BODY ASS'Y	1	INCLUD. 81-86
81		SET SCREW	1	
82		REEL	1	
83		SPIRAL SPRING	1	
84		STARTER CASE	1	
85		STARTER ROPE	1	
86		STARTER KNOB	1	
87		NAME PLATE	1	
88	669-6472	SEAL LOCK SCREW M4	3	
89		RETAINING RING (E-TYPE) D5	2	
90		STARTER PULLEY	1	
91		STARTER PAWL SPRING	2	
92		STARTER PAWL	2	
93	669-6471	STARTER PULLEY ASS'Y	1	INCLUD. 89-92
94	669-6455	CLEANER BODY	1	
95	668-4657	CHOKE VALVE	1	
96	668-4659	COLLAR 8	1	
97	668-4658	WAVE WASHER 8	1	
98	668-5407	BOLT WASHER D5	2	
99	669-6961	MACHINE SCREW (W/SP. WASHER) M5	2	

PARTS

CG 25EUS

ITEM NO.	CODE NO.		NO. USED	
100	669-6962	FUEL PIPE	1	
101	668-5139	PRIMING PUMP COMP.	1	
102	669-6459	CLEANER ELEMENT	1	
103	669-6458	CLEANER COVER	1	
104	668-4655	COVER FIXING BOLT	1	
105	668-5408	WASHER 5	3	
106	668-5408	WASHER 5	5	
107	949-566	LOCK NUT M5 (10 PCS.)	2	
121	668-4667	HEX. HOLE BOLT M5 X 12/S	1	
122	305-583	HEX. SOCKET HD. BOLT (W/SP. WASHER) M5 X 20	2	
123	669-6963	ANTI VIBE RUBBER (A)	1	
124	668-4670	PIPE HOLDER A	1	
125	668-4671	PIPE HOLDER B	1	
126	669-6964	ANTI VIBE RUBBER (B)	1	
127		HITACHI LABEL (C)	1	
128	668-4636	TAPPING SCREW D4.5 X 16	2	
129	669-6482	ENGINE COVER	1	
130		LABEL (4-STROKE)	1	
131	669-6469	STEP BOLT	2	
132	668-4648	BENT WASHER 8	2	
133	669-6965	CLUTCH PLATE (A)	2	
134	669-6948	CLUTCH	1	
135	668-4642	CLUTCH WASHER B	2	
136	668-5337	FLYWHEEL NUT	1	
137	668-5410	BOLT WASHER D8	1	
138	669-6464	MAGNET ROTOR	1	
139	668-4599	HEX. HOLE BOLT M4 X 18/WS	2	
140	669-6463	IGNITION COIL SET	1	
141	669-6467	STOP CORD	1	
142	669-6966	CORD INSULATION TUBE	1	
143	669-6466	EARTH CORD	1	
144	939-542	RETAINING RING FOR D12 SHAFT (10 PCS.)	1	
145		CAUTION MARK	1	
146	669-6480	FAN CASE	1	
147	669-6481	CLUTCH SHAFT COMP.	1	
* 148	305-812	TAPPING SCREW (W/FLANGE) D4 X 16 (BLACK)	4	FOR EUROPE (L), AUS (L), NZL (L), USA (L), CAN (L)
* 149	669-6487	HANDLE (B)	1	
* 149	669-6942	HANDLE (B)	1	FOR USA (L), CAN (L)
* 150	669-6490	LOCK LEVER	1	FOR EUROPE (L), EUROPE, AUS (L), NZL (L)
151	669-6488	LEVER	1	
152	669-6489	SPRING (A)	1	
* 153	669-6486	HANDLE (A)	1	
* 153	669-6941	HANDLE (A)	1	FOR USA (L), CAN (L)
154	669-6940	STOP SWITCH	1	
* 155	669-6491	STOP SWITCH CORD	2	FOR EUROPE (L), USA (L), CAN (L), AUS (L), CAN (L)
* 156	669-6967	PROTECTION TUBE	1	FOR EUROPE (L), USA (L), CAN (L), AUS (L), NZL (L)
* 157	669-6492	THROTTLE WIRE (EU)	1	

PARTS

CG 25EUS

ITEM NO.	CODE NO.	DESCRIPTION	NO. USED	REMARKS
* 157	669-6968	THROTTLE WIRE (USA)	1	FOR USA (L), CAN (L)
* 158	669-6474	TANK	1	
* 158	669-6969	TANK (USA)	1	FOR USA (L), CAN (L)
159	668-5199	PUMP FILTER BODY	1	
160	669-6477	STAND	1	
161	669-6478	COLLAR	3	
162	668-4709	HEX. HOLE BOLT M5 X 25/S	3	
163	669-6475	FUEL PIPE	1	
164	669-6476	FUEL PIPE (PINK)	1	
165	669-6970	RETURN GROMMET	1	
166	668-5308	FUEL GROMMET (A)	1	
* 167	669-6479	TANK CAP ASS'Y (A)	1	
* 167	669-6971	TANK CAP (A)	1	FOR USA (L), CAN (L)
168	305-583	HEX. SOCKET HD. BOLT (W/SP. WASHER) M5 X 20	3	
169	668-5408	WASHER 5	3	
170	668-5311	CLIP	3	
171	668-5408	WASHER 5	3	
* 181	323-837	TAPPING SCREW (W/FLANGE) D4 X 30	1	FOR EUROPE
* 182	669-6590	HANDLE (B)	1	FOR EUROPE
* 183	323-041	MACHINE SCREW M5 X 30 (BLACK)	1	FOR EUROPE
* 184	669-6585	HANDLE RIGHT	1	FOR EUROPE
* 185	669-6577	HANDLE HOLDER (B)	1	FOR EUROPE
* 186	669-6578	HANDLE HOLDER (C)	1	FOR EUROPE
* 187	668-4714	HEX. HOLE BUTTON SCREW 6 X 25S	2	FOR EUROPE
* 188	668-4709	HEX. HOLE BOLT M5 X 25/S	4	FOR EUROPE
* 189	669-6576	HANDLE HOLDER (A)	1	FOR EUROPE
* 190	669-6588	HANDLE (A)	1	FOR EUROPE
* 191	302-012	NUT M5 (BLACK)	1	FOR EUROPE
* 192	669-6595	HANDLE LEFT	1	FOR EUROPE
* 193	669-6972	HANDLE HOLDER (A)	1	FOR USA (L), CAN (L)
* 194	669-6973	BARRIER	1	FOR EUROPE (L), AUS (L), NZL (S)
* 195	669-6974	BOLT (BLACK) M6	2	FOR EUROPE (L), USA (L), CAN (L), AUS (L), NZL (L)
* 196	949-566	LOCK NUT M5 (10 PCS.)	2	FOR EUROPE (L), USA (L), CAN (L), AUS (L), NZL (L)
* 197	669-6975	LOOP HANDLE	1	FOR EUROPE (L), USA (L), CAN (L), AUS (L), NZL (L)
* 198	669-6485	GEAR CASE ASS'Y 3BB (A)	1	INCLUD. 199-215
* 198	669-6976	GEAR CASE ASS'Y 3BB (B) SET	1	INCLUD. 199-215 FOR USA (L), CAN (L)
199	668-4737	BOLT (W/PLUS) M6 X 8	1	
200		GEAR CASE D24	1	
201		BALL BEARING 626	1	
202		GEAR	1	
203		GEAR SHAFT D24	1	
204		BALL BEARING	1	
205		O-RING D26	1	
206	669-6977	CUTTER HOLDER (A)	1	
* 207		CUTTER HOLDER (B)	1	EXCEPT FOR USA (L), CAN (L)
* 208		NUT COVER	1	EXCEPT FOR USA (L), CAN (L)
* 209		LEFT HAND NYLON NUT M10	1	EXCEPT FOR USA (L), CAN (L)

