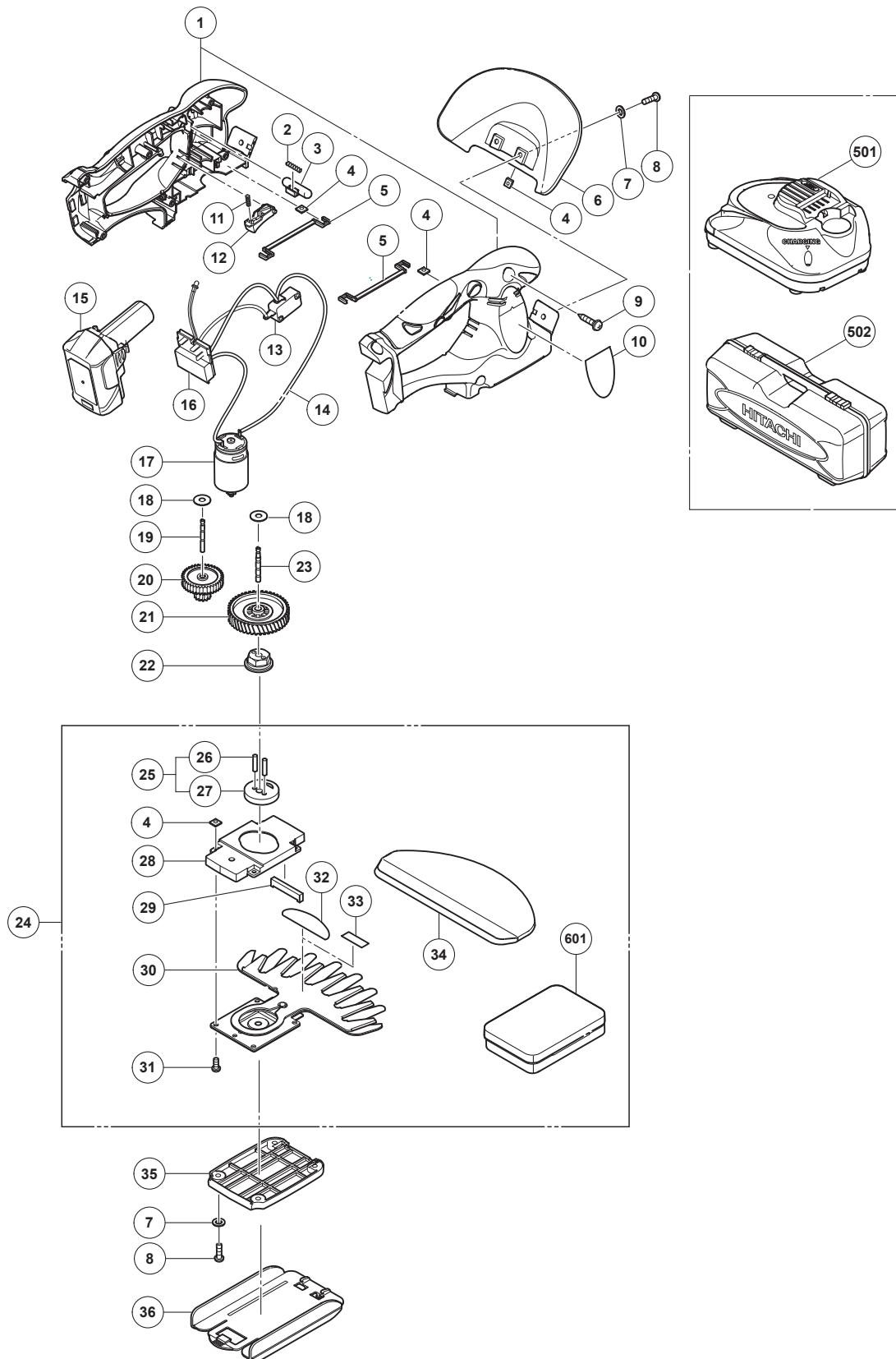


ELECTRIC TOOL PARTS LIST

CORDLESS GRASS SHEAR Model CG 10DL

2009·3·10
(E1)



PARTS

CG 10DL

ITEM NO.	CODE NO.	DESCRIPTION	NO. USED	REMARKS	
1	330-882	HOUSING	1		
2	324-306	SPRING (A)	1		
3	324-298	LOCK-OFF BUTTON	1		
4	330-056	NUT M4	10		
5	329-837	NUT HOLDER	2		
6	330-879	PROTECTOR	1		
7	949-423	WASHER M4 (10 PCS.)	6		
8	949-217	MACHINE SCREW M4X12 (10 PCS.)	6		
9	301-653	TAPPING SCREW (W/FLANGE) D4X20 (BLACK)	6		
10		NAME PLATE	1		
11	324-307	SPRING (B)	1		
12	324-299	TRIGGER	1		
13	320-786	SWITCH	1		
14	330-058	INTERNAL WIRE	1		
* 15	331-067	BATTERY BCL 1015 (EUROPE, AUS, NZL)	1		
* 15	331-065	BATTERY BCL 1015 (USA, CAN)	1		
16	329-839	CONTROLLER (C)	1		
17	330-880	MOTOR DC 10.8V	1		
18	329-835	WASHER D15	2		
19	329-832	SHAFT (B)	1		
20	330-055	FIRST GEAR	1		
21	329-831	FINAL GEAR	1		
22	329-833	CRANK HOLDER	1		
23	329-830	SHAFT (A)	1		
* 24	330-887	BLADE SET (CG)	1	INCLUD. 4, 25, 28-31, 33, 34, 601	
* 24	331-258	BLADE SET (CG)	1	INCLUD. 4, 25, 28-31, 32, 34, 601 FOR USA, CAN	
25	330-886	CRANK CAM ASS'Y	1	INCLUD. 26, 27	
26		PIN (B)	1		
27		CRANK CAM (B)	1		
28		CRANK CASE	1		
29		DUST FELT	1		
30		BLADE (CG)	1		
31	323-211	MACHINE SCREW M4X8 (BLACK)	4		
* 32		LABEL (USA)	1		
* 33		LABEL (EURO)	1		
34	328-030	BLADE COVER (170)	1		
35	330-883	BOTTOM COVER	1		
36	328-023	ADJUSTER	1		

