

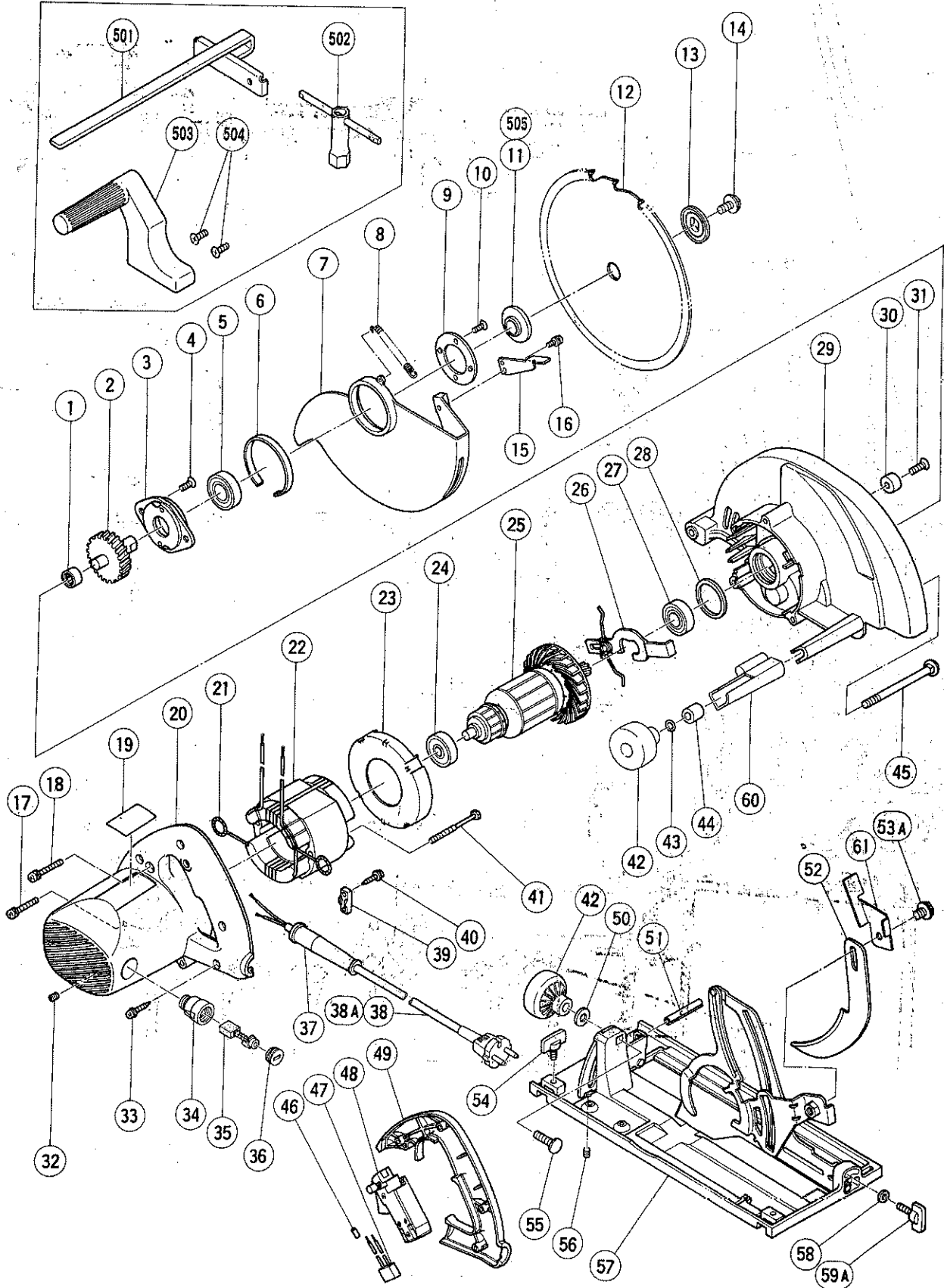
# HITACHI

LIST NO. 0570

## ELECTRIC TOOL PARTS LIST

■ CIRCULAR SAW  
Model C 9U

1993 · 7 · 28  
(E3)



**PARTS**

**C 9U**

ITEM NO.	CODE NO.	DESCRIPTION	NO. USED	REMARKS
1	673-002	NEEDLE BEARING (HK1212)	1	
2	303-789	SPINDLE GEAR	1	
3	303-790	BEARING HOLDER	1	
4	303-797	SEAL LOCK FLAT HD. SCREW M6X14	2	
5	620-3VV	BALL BEARING 6203VVCMP2S	1	
6	998-887	LINER	1	
7	303-802	SAFETY COVER	1	
8	303-805	RETURN SPRING	1	
9	303-804	BEARING COVER	1	
10	992-013	SEAL LOCK FLAT HD. SCREW M5X14	2	
*	11	302-476	1	WASHER (A) FOR D30 HOLE
*	11	302-443	1	WASHER (A) FOR D15.9 HOLE FOR FRA,SUI
*	12	303-810	1	TCT SAW BLADE 235MM - D30 HOLE - NT20
*	12	303-809	1	TCT SAW BLADE 235MM - D15.9 HOLE - NT20
	13	302-423	1	WASHER (B)
	14	302-427	1	FLANGE BOLT M8X15.5
	15	302-464	1	KNOB
	16	986-882	1	MACHINE SCREW (W/WASHERS) M4X10
	17	303-796	1	MACHINE SCREW (W/WASHERS) M5X40
	18	303-798	2	MACHINE SCREW (W/WASHERS) M5X40
	19		1	NAME PLATE
*	20	303-807	1	HOUSING ASS'Y INCLUD.32,34
*	20	303-808	1	HOUSING ASS'Y INCLUD.32,34 FOR FRA,SWE
	21	937-823	2	BRUSH TERMINAL
*	22	340-226G	1	STATOR ASS'Y 110V INCLUD.21
*	22	340-226H	1	STATOR ASS'Y 220V - 230V INCLUD.21
*	22	340-226J	1	STATOR ASS'Y 240V INCLUD.21
	23	303-794	1	FAN GUIDE
	24	630-0VV	1	BALL BEARING 6300VVCMAV2S
*	25	360-213C	1	ARMATURE 110V - 115V
*	25	360-213E	1	ARMATURE 220V - 230V
*	25	360-213F	1	ARMATURE 240V
	26	303-793	1	LOCK LEVER
	27	620-2VV	1	BALL BEARING 6202VVCMP2S
	28	303-792	1	RUBBER RING
	29	303-850	1	GEAR COVER ASS'Y INCLUD.1,28,30,31
	30	961-729	1	CUSHION
	31	949-784	1	FLAT HD. SCREW M6X20 (10 PCS.)
	32	938-477	2	HEX. SOCKET SET SCREW M5X8
	33	301-853	4	TAPPING SCREW (W/FLANGE) D4X20 (BLACK)
	34	983-362	2	BRUSH HOLDER
	35	999-038	2	CARBON BRUSH (1 PAIR)
	36	961-781	2	BRUSH CAP
*	37	958-049Z	1	CORD ARMOR D8.2
*	37	940-778	1	CORD ARMOR D10.7
*	38	500-234Z	1	CORD (CORD ARMOR D8.2)
*	38	500-247Z	1	CORD (CORD ARMOR D10.7) FOR FRG,FIN,SWE, NOR
*	38	500-248Z	1	CORD (CORD ARMOR D10.7) FOR SUI
*	38	500-396Z	1	CORD (CORD ARMOR D8.2) FOR GBR (110V)
*	38A	500-435Z	1	CORD (CORD ARMOR D8.2) FOR GBR (240V)

\*: ALTERNATIVE PARTS



